

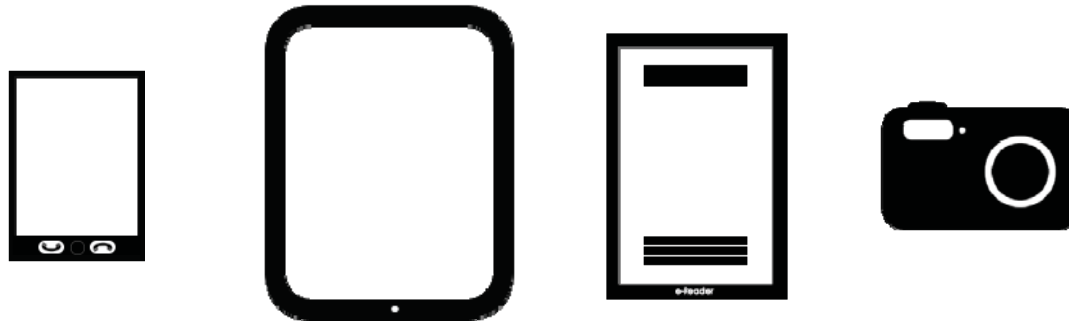
ST10 Series

Push-Push Type Micro SD™ Card Connector

Connector Training Module

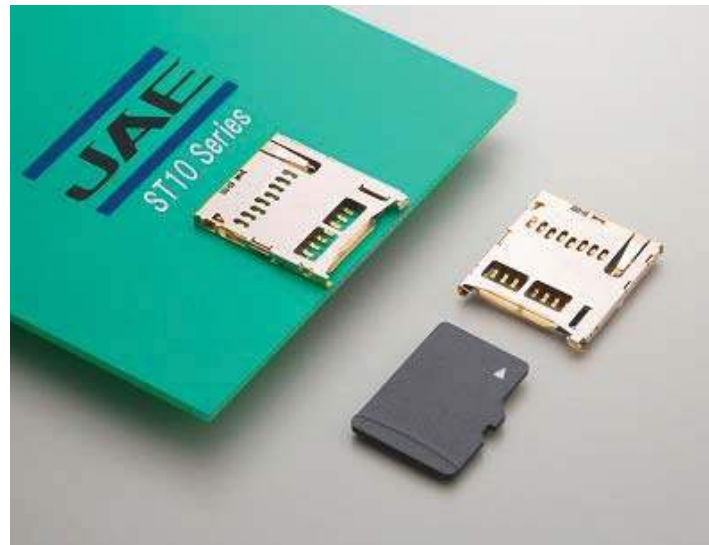
Application Examples

- Mobile/ Smartphone
- Tablet
- E-Readers
- Digital Camera
- Other devices with Micro SD



ST10 Series Overview

The ST10 Series are one-piece type external connectors for the microSD™ card. They are high-density, standard mount, push-push type, low-profile connectors compatible with the microSD™ card, standardized by SDA™ as a compact memory card for various portable devices.



ST10 Series Features

Space-Saving, Low-Profile

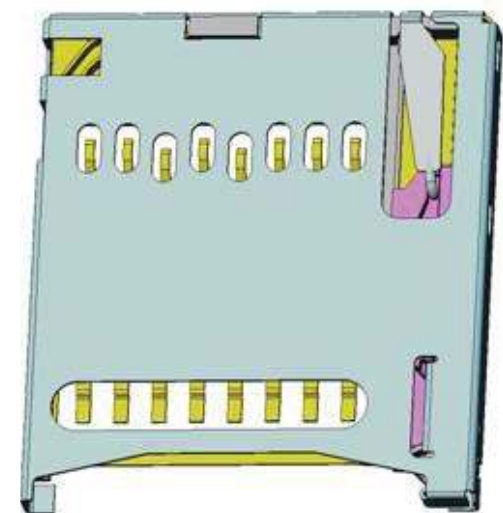
- Standard mounting type connector (SMT) for microSD™ cards
- Push-Push structure
- Balanced EMI control through 4 down-down grounding points
- Slim design with 1.25mm height, 14.85mm depth, 13.2mm width
 - (Depth including microSD™ card is 16.75mm)
- Compatible with second reflow due to reduced weight
 - After surface solder reflow (back surface reflow also possible)
- Card detection switch
- Special mechanism prevents card from popping out
- Strong drop impact resistance
- Push stroke: 1mm, card eject length: 3.1mm
- Supplied in embossed tape for automatic mounting
- Halogen-free/RoHS compliant

General Specifications

No. of Contacts	8 pos + 2pos
Dimensions (mm)*1	H: 1.35 x W: 13.2 x D: 14.85
Contact resistance	100m Ω max.
Insulation Resistance	1,000m Ω max.
Dielectric Withstanding Voltage	AC500 Vr.m.s. per minute
Operating Temperature Range	-25 to + 85 °C
Storage Temperature	-10 to + 60 °C
Rated Current	0.5A /per pin
Rated Voltage	10V/per pin
Mating Durability	10,000 times
Card Insertion Force	Maximum 40N

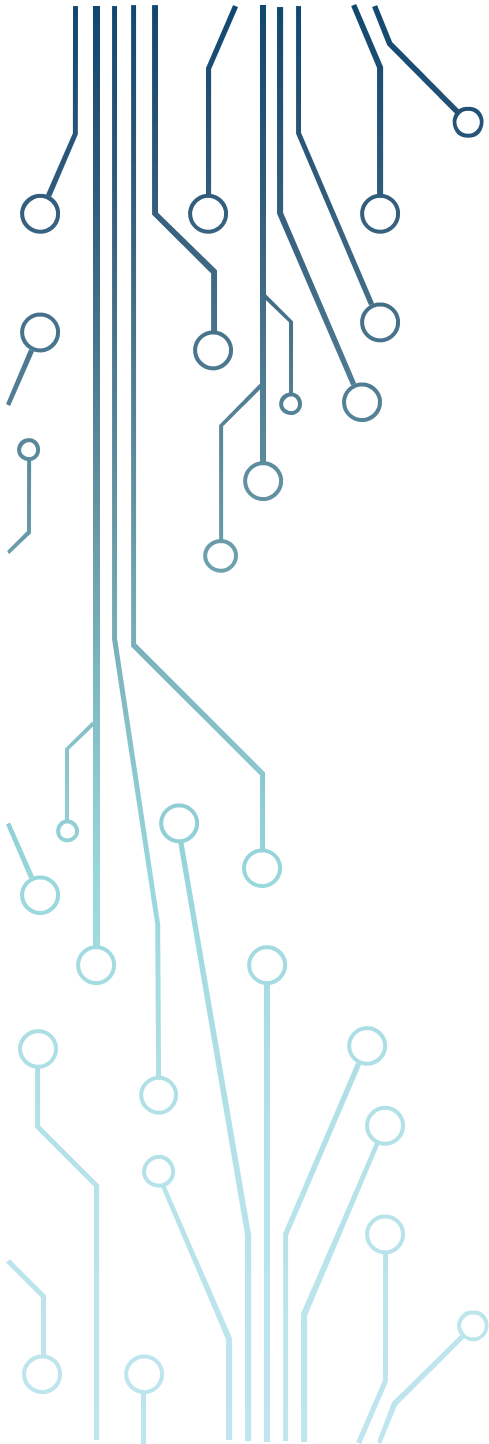
Materials and Finishes

Component	Material / Finish
Signal Contact	Copper alloy / Contact: 0.5 μ m min. Au plating over Ni Terminal: Au flash plating over Ni
Housing	Synthetic resin / No
Cover Frame	Stainless steel / Terminal area: Au flash plating over Ni
Eject Bar	Synthetic resin / None, Halogen-free material
Spring	Stainless steel / None
D-SW Contact	Same as signal contact
Lock	Stainless steel / None
Cam Follower	Stainless steel / None



Summary

- One-piece type internal connectors for the microSD™ card.
- High-density, SMT, hinge style, low-profile connectors
- Card detection switch option available
- Shield is secured by 4 ground connection points on the hinge cover
- Slim design to occupy minimal space
- Lock structure to enhance reliability
- Lead-free, halogen-free product (RoHS compliant)



Technology to Inspire Innovation

JAE