

Levels and Measuring Tools

Quick, easy and accurate measurements can mean the difference between a job well done and one that misses the mark. Klein offers a variety of levels and other measuring devices that will help you measure up to the task.



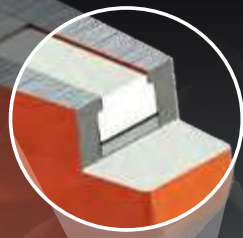
For Professionals...
Since 1857™

Aluminum Levels

Patent Pending

MAGNET TRACK

ULTRA POWERFUL 
Rare-Earth Magnets



Top V-Groove
fits contour of pipe



Tapered nose easily slides into pockets and fits in tighter spaces

High-visibility orange levels won't get lost on conduit

Large, high visibility vials are easy to read

Lighted Billet Aluminum Torpedo Level

Additional Features:

- Professional grade billet aluminum body is precision machined for high-accuracy leveling
- Large, bright LED high-definition vials are easy to read in any lighting condition
- Vials are at 3 angles: level, 90 and 45 degrees
- 3-minute auto shut-off saves battery life
- Water and impact resistant



NEW!



Super Bright High-Definition LED Vials

935RBLT

Cat. No.	Overall Length	Weight
935RBLT NEW!	9" (228.6 mm)	11.2 oz. (318 g)

Billet Aluminum Torpedo Level

Additional Features:

- Professional grade billet aluminum body is precision machined for high-accuracy leveling
- Vials are at 4 angles: level, 90, 45 and 30 degrees



NEW!

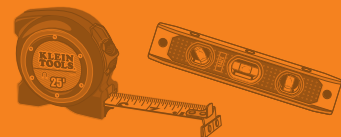


High-Visibility Orange won't get lost or blend into conduit

935RB

Cat. No.	Overall Length	Weight
935RB NEW!	8" (203.2 mm)	7.4 oz. (210 g)





Levels

Aluminum Torpedo Level

Additional Features:

- Vials are at 3 angles: level, 90 and 45 degrees
- Made from aluminum for added durability
- Cat. No. 931-9RETT has tether hole for working at height

Cat. No.	Overall Length	Weight
935R NEW!	9" (228.6 mm)	8.5 oz. (241 g)
9319RETT NEW!	9" (228.6 mm)	1.6 oz. (45 g)

NEW!



935R



Tether ring available on Cat. No. 9319RETT for working at height

Torpedo Level

Additional Features:

- Vials are at 3 angles: level, 90 and 45 degrees
- Magnetic bottom holds securely to conduit and metal surfaces

Cat. No.	Overall Length	Weight
935 NEW!	9" (228.6 mm)	4.3 oz. (122 g)

NEW!



935

Accu-Bend™ 4-Vial Level

Additional Features:

- Professional grade billet aluminum body is precision machined for high-accuracy leveling
- Thumb screw attaches level to conduit to measure angle while bending
- Large, easy to read high-visibility vials at 4 angles: level, 90, 45, and 30 degrees

NEW!



935AB4V

Cat. No.	Overall Length	Weight
935AB4V NEW!	6-1/4" (158.8 mm)	5.9 oz. (168 g)

WARNING: Brass bolt contains lead, a chemical known to the State of California to cause cancer, and birth defects or other reproductive harm. Wash hands after handling.

Accu-Bend™ 1-Vial Level

Additional Features:

- Professional grade billet aluminum body is precision machined for high-accuracy leveling
- Ensures precise 90° bends
- Thumb screw attaches level to conduit to measure angle while bending
- Non-magnetic
- 1 vial: 90°

NEW!



935AB1V



WARNING: Brass bolt contains lead, a chemical known to the State of California to cause cancer, and birth defects or other reproductive harm. Wash hands after handling.

Cat. No.	Overall Length	Weight
935AB1V NEW!	2-1/2" (63.5 mm)	2.4 oz. (68 g)

See page 310 for additional information on warnings.



Tape Measures

Patent Pending
UNCLUTTERED,
EASY-TO-READ
**BOLD LINES
EVERY 1/8"**

**EXTRA-LARGE
BOLD NUMBERS**
FOR IMPROVED
READABILITY

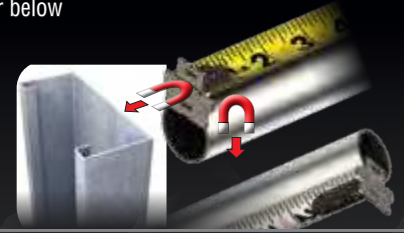


Up to
9-1/2 ft. (3 m)
STAND-OUT

⚠ WARNING:

- Protect hands when cleaning magnetic tip end. Use gloves or cloth.
- Avoid magnetic contact with sensitive electronic or computer equipment.
- To avoid personal injury and damage to this tool, do not allow the tape blade to retract into case.
- Do NOT open case. Spring motor is under tension, and opening case may cause injury.

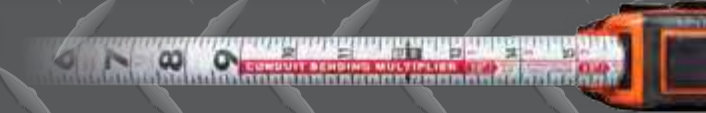
Magnetic end hooks with dual angle polarity
attaches to conduit and steel studs to easily
read from above or below



Retraction Speed Brake
controls blade speed and
protects fingers from having
to touch blade



Blade-printed conduit multiplier bending table
helps calculate offsets and saddles



Tape Measures - Magnetic

Additional Features:

- Heavy duty nylon coating protects blade printing
- Super-sized back clip holds securely to wide belts and extends into pockets
- Cat. Nos. 86315 and 86375 feature double sided printing with centimeters and inches
- U.S. Patent Pending

Cat. No.	Blade Length	Hook	Weight
86216 NEW!	16 ft. (4.9 m)	Double	13.0 oz. (367 g)
86225 NEW!	25 ft. (7.6 m)	Double	17.6 oz. (498 g)
86230 NEW!	30 ft. (9.1 m)	Double	20.4 oz. (580 g)
Metric			
86315 NEW!	5 m	Double	13.0 oz. (367 g)
86375 NEW!	7.5 m	Double	18.1 oz. (514 g)



NEW!

86225

Tape Measure - Non-Magnetic

Additional Features:

- Heavy duty nylon coating protects blade printing
- Super-sized back clip holds securely to wide belts and extends into pockets
- U.S. Patent Pending

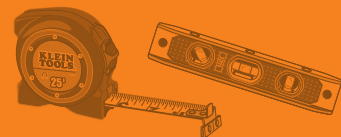
Cat. No.	Blade Length	Hook	Weight
86125 NEW!	25 ft. (7.6 m)	Single	17.9 oz. (506 g)



NEW!

86125





Tape Measures

Tape Measures-Steel with High-Visibility Case

- High-visibility, high-impact orange case makes it easy to find in a tool box, pouch and on the jobsite
- 16" stud markings and 19.2" truss markings



928-25HV

Cat. No.	Blade Length	Width	Weight
928-25HV	25 ft. (7.6 m)	1" (25.4 mm)	16 oz. (454 g)

Tape Measure Holders

- Klein offers a complete selection of leather or nylon Tape Holders and Pouches



Tape Measure	Holder Cat. No.	Description	Overall Size	Weight
86216, 86315	5195	Medium Leather Pouch	4-1/2" x 7" (114 mm x 178 mm)	2.9 oz. (82 g)
	5707	Nylon Tape Measure Clip/Holder	4-1/8" x 3-3/4" (104 mm x 95 mm)	1.6 oz. (45 g)
86125, 86225, 86375	5196	Large Leather Pouch	5" x 7" (127 mm x 178 mm)	3.4 oz. (95 g)
	5707	Nylon Tape Measure Clip/Holder	4-1/8" x 3-3/4" (104 mm x 95 mm)	1.6 oz. (45 g)
	5195TT	Tape Measure Holder with Ring	3" x 3.5" (76 mm x 89 mm)	1.6 oz. (45 g)
86230	5196	Large Leather Pouch	5" x 7" (127 mm x 178 mm)	3.4 oz. (95 g)
	5707	Nylon Tape Measure Clip/Holder	4-1/8" x 3-3/4" (104 mm x 95 mm)	1.6 oz. (45 g)
	5712	Tape Measure Holder with Ring	8-1/4" x 4-1/2" (210 mm x 114 mm)	3.8 oz. (109 g)

Laser Measuring Tools

Laser Distance Measurer

- Meter provides measurements up to 65 ft. (19.8 m) in distance, at an accuracy of + or - 1/16" (1.6 mm)
- Quickly calculates length, area, volume, and indirect measurements with large, easy-to-read buttons
- Offers the option of one-touch, single-distance measurement and continuous measurement
- Depth gauge stick flips out to measure from inside corners or channels
- Highly visible backlit display
- Provides both fractional (imperial) and metric readings
- Memory stores last 20 measurements
- Includes handy carrying pouch to keep until safe when not in use

NEW!



93LDM65

Cat. No.	Batteries	Height	Width	Depth	Weight
93LDM65 NEW!	2 x AAA	4-1/2" (114.3 mm)	2" (50.8 mm)	1-3/8" (34.9 mm)	5.1 oz. (145 g)

See page 310 for additional information on warnings.



Folding Rulers

Wood Folding Rules

- Strong, 6' (183 cm) long hardwood rules with clear abrasion-resistant coating
- Black markings on yellow, with red stud center markings every 16 inches
- Measurements are marked on both sides and both edges, graduated to 1/16th inch
- Riveted lock joints are designed for long wear and maintained accuracy
- Extension slide moves under friction in a T-slot with stops at each end. (Cat. No. 905-6)



901-6

Cat. No.	Reading	Length	Weight
900-6	Inside	6 ft. (1.8 m)	5.3 oz. (150 g)
901-6	Outside	6 ft. (1.8 m)	5.3 oz. (150 g)
905-6	Outside	6 ft. (1.8 m)	5.3 oz. (150 g)

Non-Conductive Fiberglass Folding Rules

- Constructed of tough nylon, reinforced with glass fibers for added durability, and resistance to weather, abrasion and most chemicals
- Positive locking joints and stainless steel spring hinges for added strength
- Measurements are marked on both sides and both edges, graduated to 1/16th inch
- Black markings on yellow, with red stud center markings every 16 inches
- Engraved graduations on both sides



910-6

Cat. No.	Reading	Length	Weight
910-6	Inside	6 ft. (1.8 m)	5.3 oz. (150 g)
911-6	Outside	6 ft. (1.8 m)	5.3 oz. (150 g)

Fiberglass Tapes

Woven Fiberglass Tapes

- Woven fiberglass tape with moisture-proof coating of polyvinyl chloride assures durability and protects against oil or chemicals
- Can be immersed in water without adverse effects
- All metal parts are nickel-plated for protection against rust
- End-hooks are permanently attached to a reinforced strip
- Case and reel are ruggedly built, yet lightweight and comfortable to use
- Tape line is graduated in feet and inches to 8ths
- Black graduating numbers and red foot markings on yellow background
- Protective carrying case on Cat. Nos. 946-50 and 946-100 encloses tape completely
- Tape rings tuck neatly into case opening for storage
- Cat. No. 946-150 is contained in an open reel and is easy to handle and rewind



946-100



946-150

Cat. No.	Description	Length	Width	Weight
946-50	50' Woven Fiberglass Tape Case	50 ft. (15.2 m)	1/2" (12.7 mm)	12.8 oz. (363 g)
946-100	100' Woven Fiberglass Tape Case	100 ft. (30 m)	1/2" (12.7 mm)	1.2 lbs. (0.54 kg)
946-150	150' Woven Fiberglass Tape Open-Reel	150 ft. (45.7 m)	1/2" (12.7 mm)	1.7 lbs. (0.77 kg)