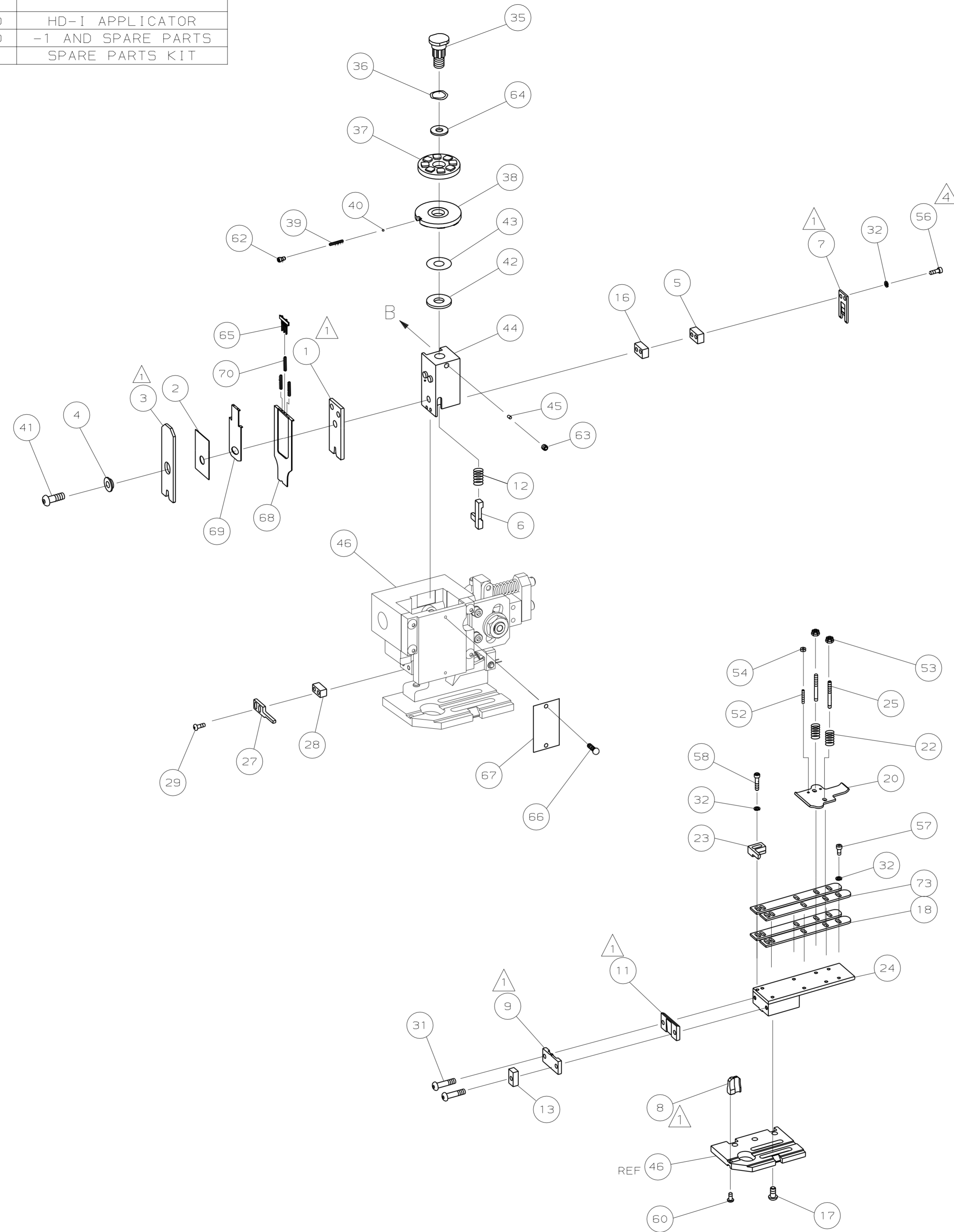


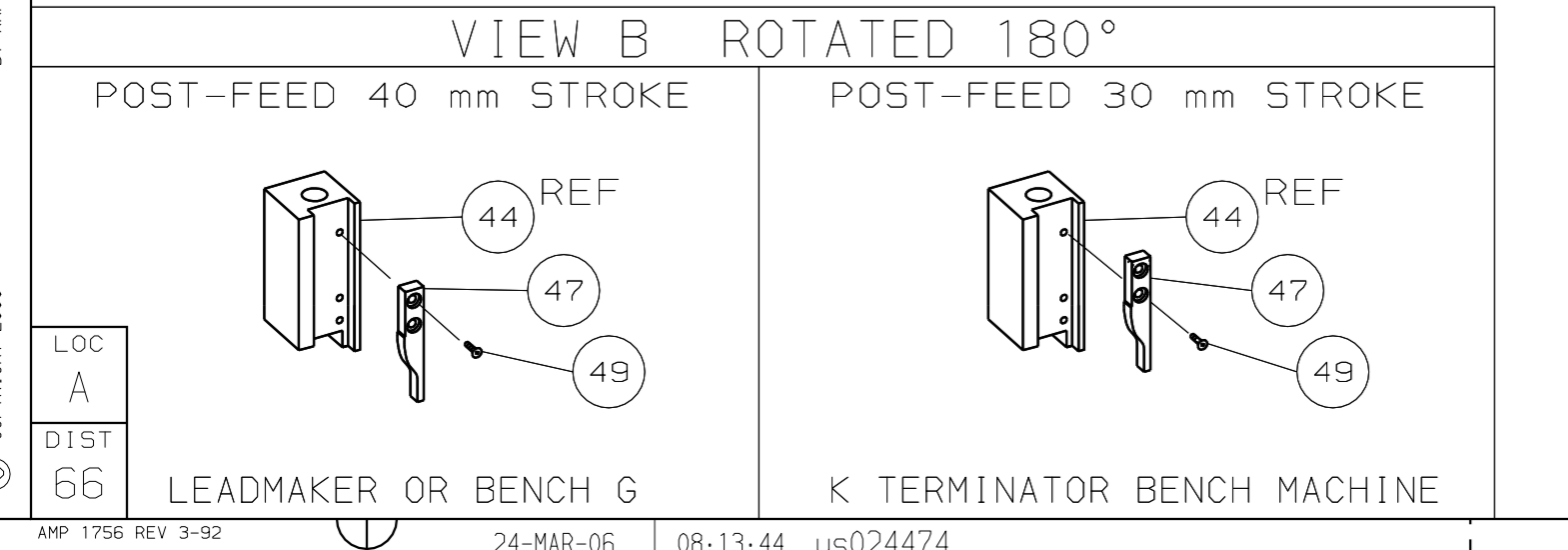
PART NUMBER	REV	FIRST USED	TERMINATOR	FEED TYPE	DESCRIPTION
1339537-1	B		BENCH & LEADMAKER	MECH POST FEED	HD-I APPLICATOR
7-1339537-1	B		BENCH & LEADMAKER	MECH POST FEED	-1 AND SPARE PARTS
7-1339537-7	A				SPARE PARTS KIT

CRIMP DATA AMP TERMINAL AMP CRIMP SPECS			
TERMINAL NAME: FASTIN-FASTON .250 SERIES REC.			
CRIMP	SIZE	TYPE	RANGE
WIRE	4.06 [1.160 IN]	F	4.00-6.00mm ²
INSUL	5.33 [1.210 IN]	F	3.43-5.08 [1.135-.200 IN]
WIRE STRIP LENGTH		APPL INSTRUCTION	
4.80-5.60 [1.189-.220 IN]		408-8323	
TERMINAL APPL SPEC		FEED	
114-3118		21.46 [1.845 IN]	
TERMINALS APPLIED			
160811	-	-	-
-	-	-	-
-	-	-	-
-	-	-	-
-	-	-	-
-	-	-	-
-	-	-	-
-	-	-	-
-	-	-	-
WIRE SIZE	CRIMP HEIGHT	PIN PN & LENGTH [IN]	
mm ² AWG			
6.00mm ²	2.63 ± 0.05 [1.104 ± 0.002 IN]	5-354778-9 [1.2790]	
5.00mm ²	2.44 ± 0.05 [1.096 ± 0.002 IN]	7-354778-6 [1.2875]	
4.00mm ²	2.25 ± 0.05 [1.089 ± 0.002 IN]	9-354778-1 [1.2950]	
-	-	-	
-	-	-	
-	-	-	
-	-	-	
-	-	-	
-	-	-	
-	-	-	
-	-	-	
-	-	-	
-	-	-	



QTY	REV	PART NO	DESCRIPTION	ITEM NO	
- 2	2	1338663-3	GUIDE, LOWER STRIP	73	
- 1	1	1339537	PRINT, APPLICATOR LOG SHEET	72	
- 1	1	1338705-2	DOCUMENTATION PACKAGE	71	
- 3	3	1-23147-4	SPRING, DEPRESSOR	70	
- 1	1	1490524-1	SPACER, DEPRESSOR	69	
- 1	1	1490525-3	DEPRESSOR, WIRE	68	
- 1	1	461264-1	PLATE, IDENTIFICATION	67	
- 2	2	21017-2	SCR,DRIVE (#2X.19) ID PLATE	66	
- 1	1	1424350-1	HOLDER, PIN, WIRED	65	
- 1	1	986950-1	WASHER, FLAT PRECISION	64	
- 1	1	3-18031-0	SCR,SKT SET (M6X6) RAM	63	
- 1	1	18023-9	SCR,SKT CAP (M4X6) CP DSC	62	
- 1	1			61	
- 1	1	18024-7	SCR,BHC (M4X10) ANVIL	60	
-	-			59	
- 2	2	1-18023-4	SCR,SHC (M4X20) HOLD DOWN	58	
- 5	5	1-18023-1	SCR,SHC (M4X10) STRIP GUIDE	57	
- 2	2	9-18023-6	SCR,SHC (M4X14) SLUG BLADE	56	
-	-			55	
- 2	2	18029-1	NUT, HEX (M3) DRAG	54	
- 2	2	986965-1	NUT, HEX SL (M4) DRAG STUD	53	
- 2	2	2-18032-2	SCR,SKT SET (M3X10) DRAG	52	
-	-			51	
-	-			50	
- 1	1	18024-3	SCR,BHC (M3X10) CAM	49	
-	-			48	
- 1	1	1338676-1	CAM, POST-FEED 30 & 40 mm ST	47	
- 1	1	1338662-2	APPLICATOR, BASIC (SUBASSY)	46	
- 1	1	690191-1	PLUG, NYLON	45	
- 1	1	1320998-1	RAM	44	
- 1	1	690125-1	WASHER, LAMINATED	43	
- 1	1	1-690124-0	WASHER, RAM	42	
- 1	1	2-18024-6	SCREW,BHC (M8X25) CRIMPER	41	
- 1	1	23241-1	BALL, STEEL	40	
- 1	1	2-22278-7	SPRING, COMPRESSION	39	
- 1	1	1320922-1	DISC, INSULATION	38	
- 1	1	354777-1	WIRE DISC, PLASTIC	37	
- 1	1	22480-5	WASHER, SPRING	36	
- 1	1	690212-1	POST, RAM	35	
-	-			34	
-	-			33	
- 9	9	18025-2	WASHER, LOCK (M4) SHEAR BL	32	
- 2	2	1-18024-0	SCR,BHC (M4X20) SHEAR PL	31	
-	-			30	
- 2	2	18024-8	SCR,BHC (M4X12) STRIPPER	29	
- 1	1	3-690451-2	SPACER, STRIPPER	28	
- 1	1	240639-1	STRIPPER	27	
-	-			26	
- 2	2	1320906-1	DRAG, STUD	25	
- 1	1	1320995-3	STRIP GUIDE	24	
- 1	1	240825-3	PLATE, STRIP HOLD DOWN	23	
- 2	2	4-22281-1	SPRING, DRAG	22	
-	-			21	
- 1	1	1338665-1	DRAG, STOCK	20	
-	-			19	
- 2	2	1338663-5	GUIDE, LOWER STRIP	18	
- 4	4	1-18024-8	SCR,BHC (M6X12) STRIP GD PL	17	
- 1	1	1338708-1	SPACER, SLUG BLADE	16	
-	-			15	
-	-			14	
- 1	1	690481-2	SPACER, HOLD DOWN	13	
- 1	1	23846-1	SPRING, HOLD DOWN	12	
- 1	1	240833-2	PLATE, REAR SHEAR	11	
-	-			10	
- 1	1	690482-3	PLATE, FRONT SHEAR	9	
1	2	1	1333223-2	ANVIL	8
- 1	1	690474-3	BLADE, SLUG	7	
- 1	1	2-455892-7	HOLD DOWN, TERMINAL	6	
- 1	1	240641-4	SPACER, SLUG BLADE	5	
- 1	1	238009-1	SPACER, BLOCK CRIMPER	4	
1	2	1	6-683453-8	CRIMPER, INSULATION	3
- 1	1	455888-7	SPACER, CRIMPER	2	
1	2	1	456427-1	CRIMPER, WIRE	1
-77	-71	-1	PART NO	DESCRIPTION	ITEM NO
				← REVISION OF EACH ASSY NO (WHEN BLANK, USE DWG REVISION)	

- RECOMMENDED SPARE PARTS.
- GREASE RAM, CAM, CAM FOLLOWER AND FEED ROD LIGHTLY.
- LUBRICATE DAILY PER THE APPLICATOR INSTRUCTION SHEET SUPPLIED WITH THE APPLICATOR.
- CUT TO LENGTH AT ASSY.



DIMENSIONS: mm [INCHES]				MATERIAL		FINISH	
DO NOT SCALE PRINT.				-		-	
TOLERANCES UNLESS OTHERWISE SPECIFIED:				-		-	
1 PLC DEC ±				-		-	
2 PLC DEC ±				-		-	
3 PLC DEC ±				-		-	
ANGLES ±				-		-	
SURF TEXTURE: ✓				-		-	
REMOVE BURRS, BREAK SHARP EDGES RO.38 MAX				-		-	
SCALE: -				D		DWG NO	
00779				CUSTOMER AND ASSEMBLY DRAWING		RESTRICTED TO	

THIS DRAWING IS A CONTROLLED DOCUMENT.

LAYOUT L1339537
SET UP GAGE 458638-3

2000
RELEASED FOR PUBLICATION
BY AMP INCORPORATED. ALL RIGHTS RESERVED.