

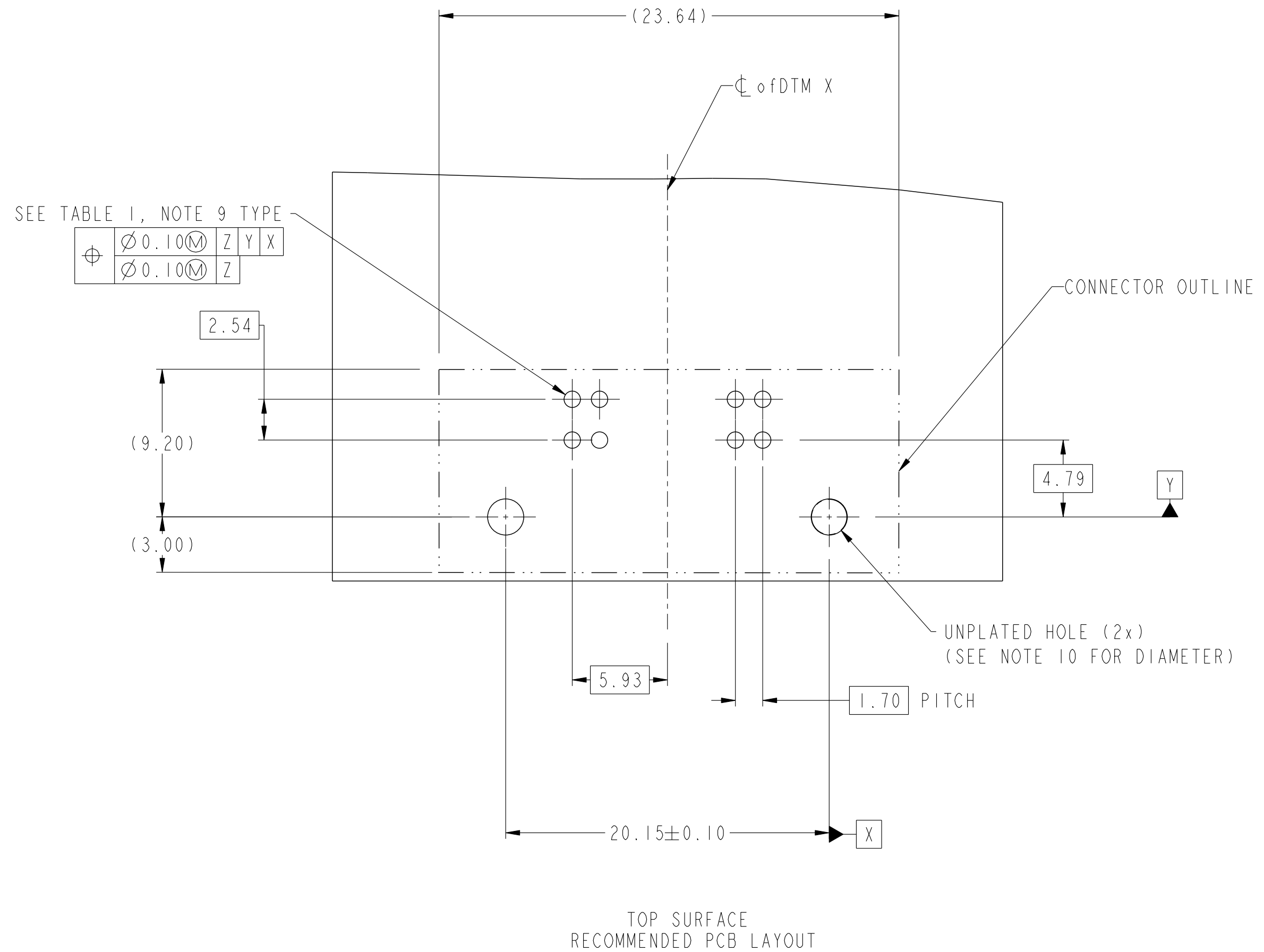
spec ref	dr	Hai-Ling Liu	2015/02/04	projection	MM	size	A2	scale	1:1	
tolerance std	eng	Hai-Ling Liu	2015/04/10			ecn no	-	rel level	Released	
TOLERANCES UNLESS OTHERWISE SPECIFIED	chr	Terris Liu	2015/04/10							
	appr	Pei-Ming Zheng	2015/04/10							
surface	linear	0.X	±0.5					product family	-	
		0.XX	±0.25					title	HPCE BTB RAH ASSY	
		0.XXX	±0.15					6LP OMMITED 2LP	cat. no.	-
	angular	0°	±2°					Product - Customer Drw	sheet 1 of 3	

PDS: Rev :A

STATUS:Released

Printed: Apr 10, 2015

CONTACT TYPE	TOP LAYER DESCRIPTION	TABLE 1 (HPCE / SOLDER TAILS) PLATED THROUGH-HOLE REQUIREMENTS				
		DRILLED HOLE DIAMETER	COPPER THICKNESS	TIN-LEAD THICKNESS	TIN THICKNESS	FINISHED HOLE DIAMETER
POWER	TIN-LEAD	1.10-1.16 (1.15 DRILL)	0.025 - 0.050	0.005 - 0.015	--	0.94 - 1.10
	IMMERSION TIN	1.10-1.16 (1.15 DRILL)	0.025 - 0.050	--	0.9 - 1.5um	0.94 - 1.10
	COPPER (SEE NOTE 8)	1.10-1.16 (1.15 DRILL)	0.025 - 0.050	--	--	0.94 - 1.10
SIGNAL	TIN-LEAD	0.93-0.99 (0.98 DRILL)	0.025 - 0.050	0.005 - 0.015	--	0.77 - 0.93
	IMMERSION TIN	0.93-0.99 (0.98 DRILL)	0.025 - 0.050	--	0.9 - 1.5um	0.77 - 0.93
	COPPER (SEE NOTE 8)	0.93-0.99 (0.98 DRILL)	0.025 - 0.050	--	--	0.77 - 0.93



dr	Hai-Ling Liu	2015/02/04	projection	MM	size	A2	scale	1:1
eng	Hai-Ling Liu	2015/04/10			ecn no	-	rel level	Released
chr	Terris Liu	2015/04/10						
appr	Pei-Ming Zheng	2015/04/10	product family	-	rel level	Released		
			title HPCE BTB RAH ASSY 6LP OMMITED 2LP			dwg no 10133423		rev A
www.fci.com			cat. no.			Product - Customer Drw		sheet 2 of 3

PART NUMBER (TABLE 2)				
PART NUMBER	TAIL TYPE	OPTIONAL PLASTIC PEG	DIM "A" TYPICAL TAIL LENGTH	RECOMMENDED BOARD THICKNESS
10132353-001LF	SOLDER TAIL	YES	2.60±0.25	1.57
10132353-002LF		NO		
10132353-003LF		YES	3.25±0.25	2.36
10132353-004LF		NO		

NOTES:

1. CONNECTOR MATERIALS:

HOUSING: HIGH TEMPERATURE THERMAL PLASTIC, BLACK UL 94V-0 COMPLIANT

CONTACTS: HIGH PERFORMANCE COPPER ALLOY.

2. CONTACT FINISH REF. GS-12-1031 SECTION TBD

3. PRODUCT SPECIFICATION: GS-12-1125

4. APPLICATION SPECIFICATION: GS-20-0388

⑤. PRODUCT MARKING (FCI PART NUMBER & DATE CODE) ON HOUSING IN AREA SHOWN.

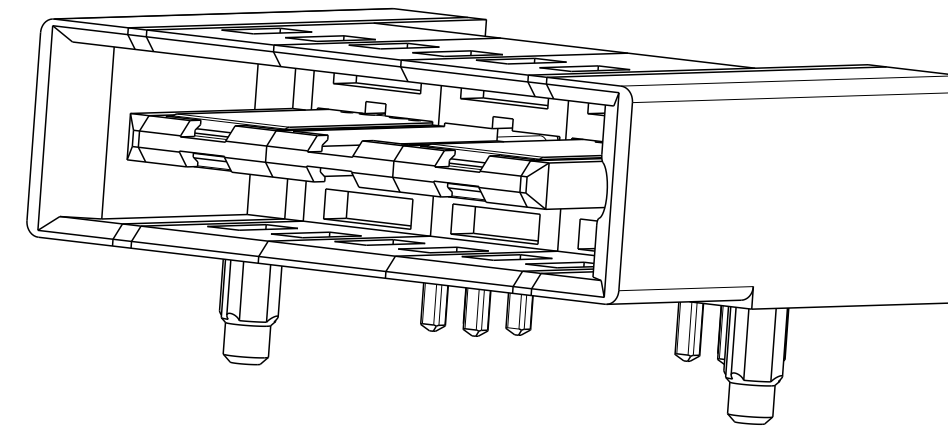
6. PACKAGING MEETS FCI SPECIFICATION GS-14-2272.

⑦. HOUSING COMPONENT WILL WITHSTAND EXPOSURE TO 260°C PEAK TEMPERATURE FOR 60 SECONDS IN A CONVECTION, INFRA-RED, OR VAPOR PHASE REFLOW OVEN.

⑧. COPPER PLATING THICKNESS IN CENTER OF VIA-HOLE CAN BE NO MORE THAN 0.003 LESS THAN OTHER AREAS.

⑨. ALL HOLE SIZES ARE FINISHED HOLE SIZES.

⑩. MOUNTING HOLES ARE UNPLATED
 $\varnothing 2.20 \pm 0.05$ FOR SOLDER TAILS



dr	Hai-Ling Liu	2015/02/04	projection	MM	size	A2	scale	1:1	
eng	Hai-Ling Liu	2015/04/10			ecn no	-	rel level	Released	
chr	Terris Liu	2015/04/10							
appr	Pei-Ming Zheng	2015/04/10	product family	-	rel level	Released			
			title HPCE BTB RAH ASSY 6LP OMMITED 2LP			dwg no 10133423		rev A	
www.fci.com			cat. no.			Product - Customer Drw			sheet 3 of 3