

SPECIFICATIONS:

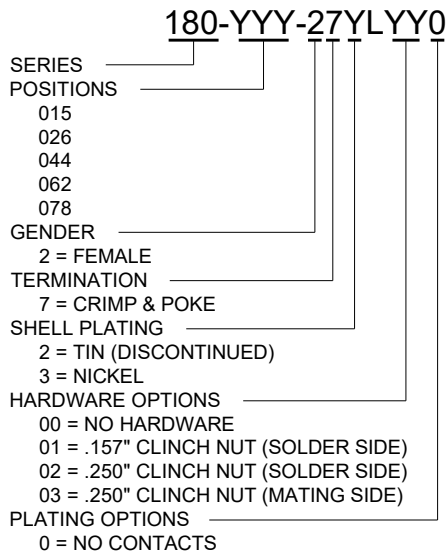
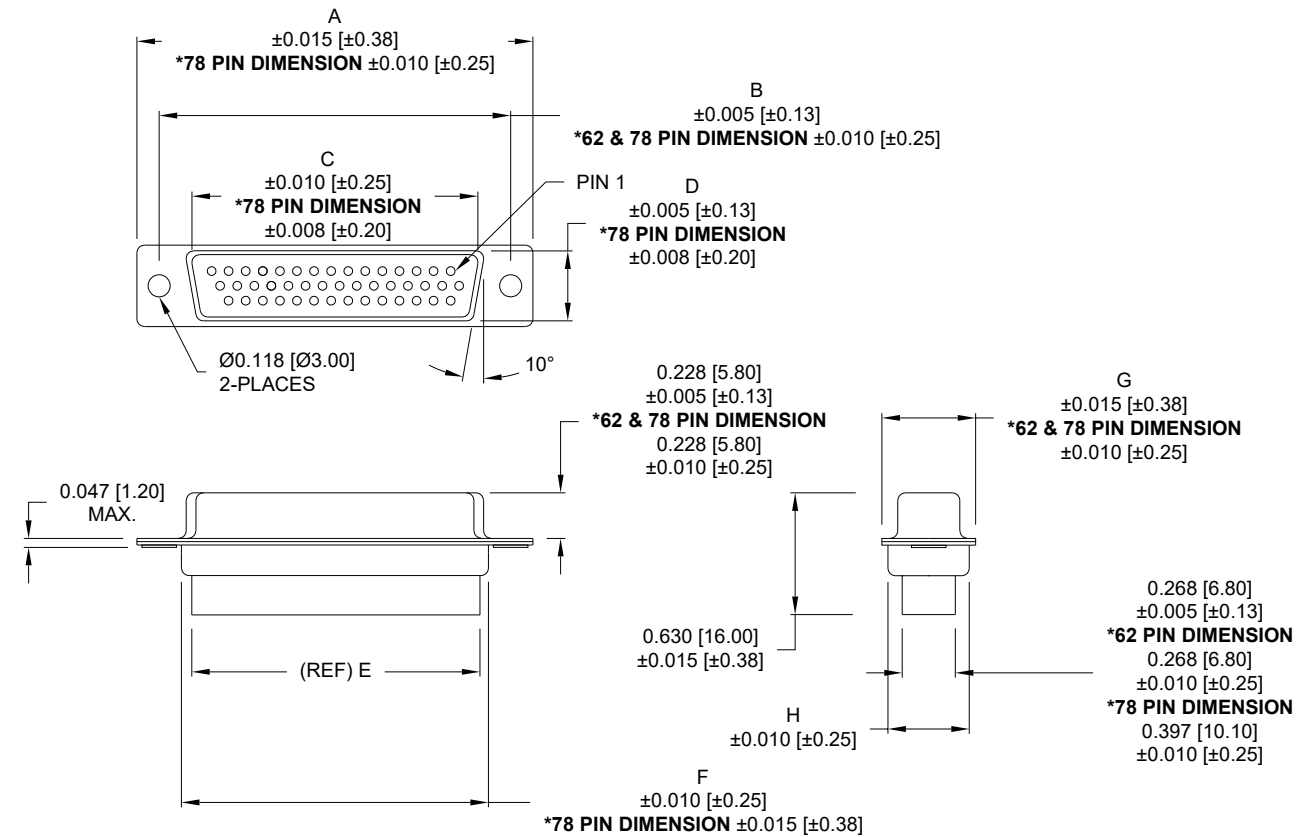
ELECTRICAL:
 INSULATION RESISTANCE: 1,000 MOhms MIN.
 OPERATING TEMPERATURE: -50°C TO +100°C
 VOLTAGE: 500 VAC FOR 1 MINUTE

MATERIALS:
 INSULATOR: PBT +30% GF, UL94 V-0
 PROCESS TEMP: 230°C
 SHELL: NICKEL PLATED STEEL

COMPATIBLE WITH NORCOMP CONTACT PART NUMBERS BELOW:

180-002-170L001 180-102-170L001

****NOTE: CONTACTS MUST BE PURCHASED SEPARATELY****



		DIMENSIONS							
No. OF PINS	UNITS	A	B	C	D	E	F	G	H
15	inch	1.213	0.984	0.643	0.311	0.610	0.759	0.494	0.421
	mm	30.81	24.99	16.33	7.90	15.50	19.28	12.55	10.70
26	inch	1.541	1.312	0.970	0.311	0.964	1.089	0.494	0.421
	mm	39.14	33.32	24.66	7.90	24.50	27.65	12.55	10.70
44	inch	2.088	1.852	1.511	0.311	1.494	1.618	0.494	0.421
	mm	53.04	47.04	38.38	7.90	37.95	41.10	12.55	10.70
62	inch	2.736	2.500	2.157	0.311	2.142	2.262	0.494	0.421
	mm	69.50	63.50	54.80	7.90	54.40	57.46	12.55	10.70
4 ROWS 78	inch	2.644	2.406	2.061	0.422	2.035	2.169	0.605	0.527
	mm	67.16	61.11	52.34	10.72	51.70	55.10	15.37	13.40

RoHS COMPLIANT

UNITS = inch [mm]

DO NOT SCALE FROM DRAWING



THESE DRAWINGS AND SPECIFICATIONS ARE THE PROPERTY OF NorComp AND SHALL NOT BE REPRODUCED, COPIED OR USED AS THE BASIS FOR THE MANUFACTURE OR SALE OF APPARATUS WITHOUT WRITTEN PERMISSION.

DRAWN:
P. JENKINS

DATE:
07/19/2005

NorComp

SCALE:
NTS

SHEET OF
1 2

REV
22

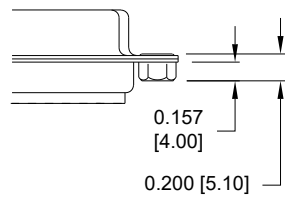
DWG NO.

180-YYY-27YLYY0

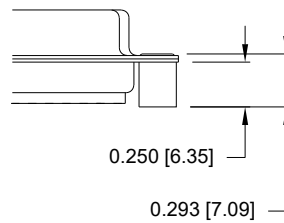
TOLERANCE:
ALL DIMENSIONS ARE ±0.010

ALL CLINCH-NUTS ARE 4-40 INTERNAL THREADS

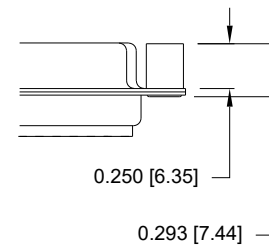
01 0.157" (SOLDER SIDE)



02 0.250" (SOLDER SIDE)



03 0.250" (MATING SIDE)



RoHS COMPLIANT

UNITS = inch [mm]

DO NOT SCALE FROM DRAWING



THESE DRAWINGS AND SPECIFICATIONS ARE THE PROPERTY OF NorComp AND SHALL NOT BE REPRODUCED, COPIED OR USED AS THE BASIS FOR THE MANUFACTURE OR SALE OF APPARATUS WITHOUT WRITTEN PERMISSION.

DRAWN:
P. JENKINS

DATE:
07/19/2005

NorComp

SCALE:
NTS

SHEET OF
2 2

REV
22

DWG NO.

180-YYY-27YLYY0