



REVISIONS			
REV	DESCRIPTION, ECN, EAR NO.	DATE	APP'D
A	DRAWING PER EAR XXXX	TBD	TBD

Specification

Material

Insulator : Glass-Filled Thermoplastic PBT, UL94V-0
 Contact : Brass, 0.8u" Au Over 100u" Tin Over 50u" min Nickel
 Shell : Steel, 100u" Tin Over 50u" min Copper
 Boardlock : Brass, 100u" Tin Over 50u" min Copper
 Screwlock : Steel, 60u" Nickel Over 50u" min Copper

Electrical

Contact Resistance : 20 milliohms
 Insulation Resistance : 1000 megohms min.
 at 500 VDC

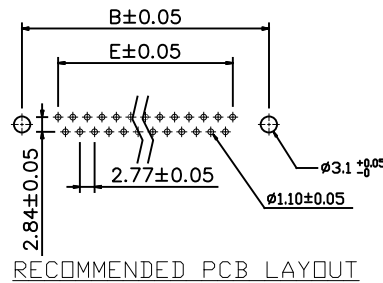
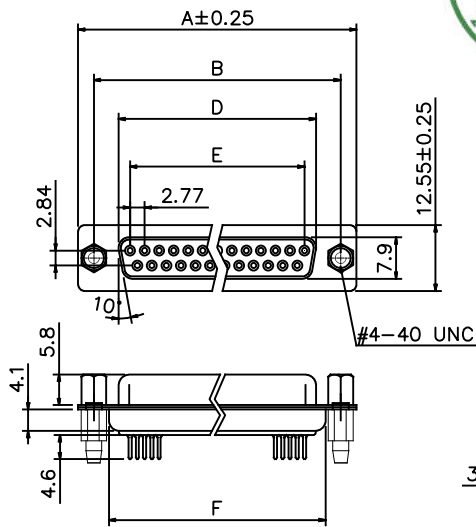
Dielectric Withstanding Voltage :
 1000 VAC/rms 60Hz for 1 minute

Current Rating : 3 AMP

Voltage Rating : 250 VAC/rms 60Hz

Environmental

Temperature Range : -55°C ~ +85°C



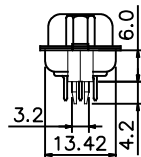
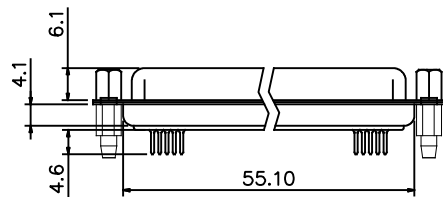
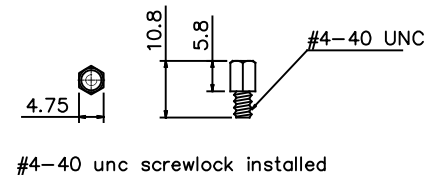
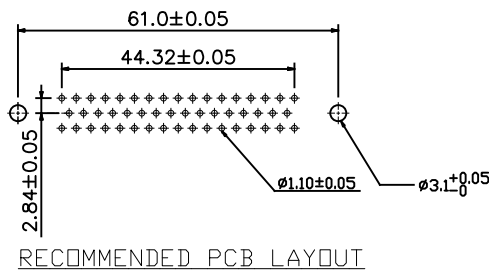
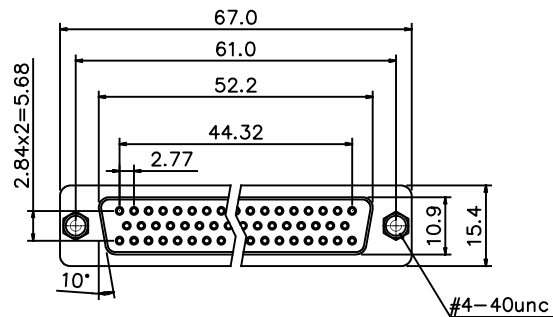
DIMENSION TABLE

POSITIONS	A	B	D	E	F
9	30.81	24.99	16.33	11.08	19.20
15	39.20	33.30	24.70	19.39	27.70
25	53.05	47.04	38.40	33.24	41.10
37	69.40	63.50	54.80	49.86	57.30

ORDERING CODE: NFD17-AXXSB-FE1D-A

NUMBER OF CONTACTS:

- 09: 09 POSITION
- 15: 15 POSITION
- 25: 25 POSITION
- 37: 37 POSITION



50 POSITIONS

UNLESS SPECIFIED OTHERWISE	DRAWN ED.LIU	JUL22/22
PRIMARY UNITS MILLIMETERS	CHECKED TBD	TBD
SECONDARY	M.E. APP'D	
REFERENCE IN PARENTHESES	Q.A. APP'D	
GENERAL TOLERANCES	DWG APP'D TBD	TBD
1 DECIMAL PLACE ±0.38	ENG. REL. NO. EAR XXXX	
2 DECIMAL PLACES ±0.25	REF.	
3 DECIMAL PLACES	THIRD ANGLE PROJECTION	DO NOT SCALE DRAWING
ANGULAR DEGREES ±2°		

Amphenol Canada Corp.
 Commercial Products
 NFD17 SERIES FEMALE
 D-SUB CONNECTOR,
 RoHS COMPLIANT

DWG NO.	REV
P-NFD17-AXXSB-FE1D-A	A
CODE ID NO. 03554	DWG SIZE X
SCALE XX:1	SHEET 1 OF 1