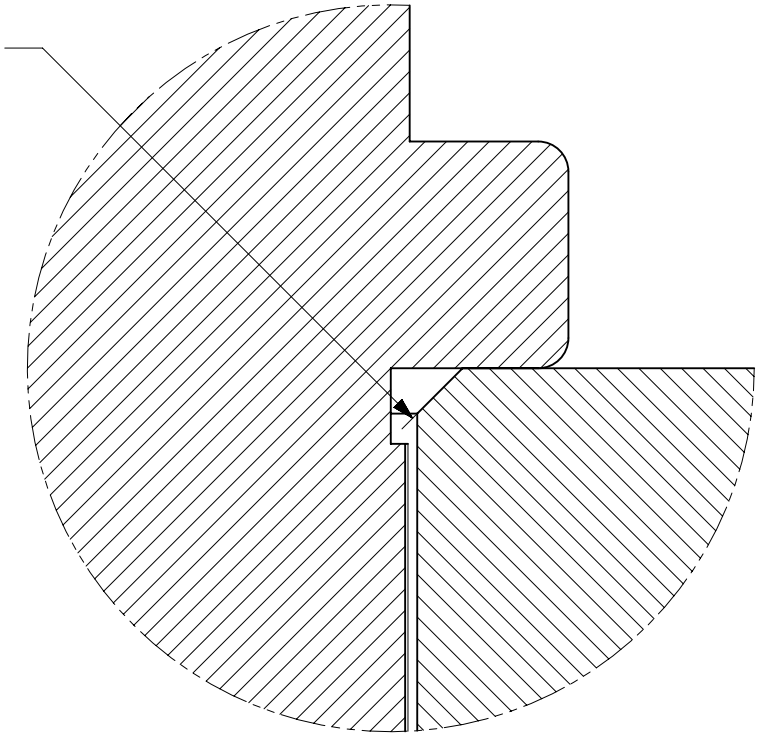
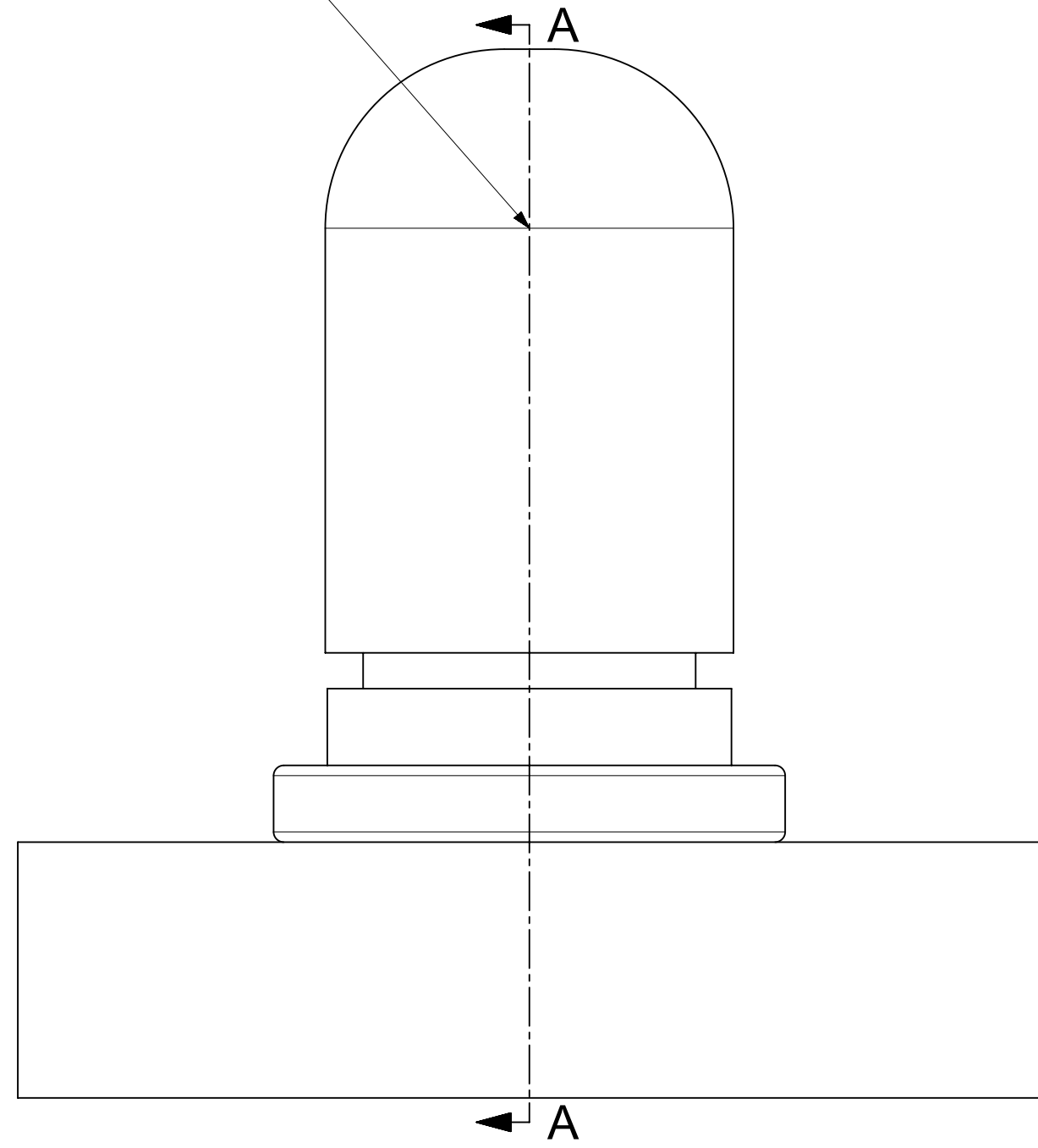


C 0.30
ON BUSBAR



DETAIL B
SCALE 20:1

PIN



BUS BAR

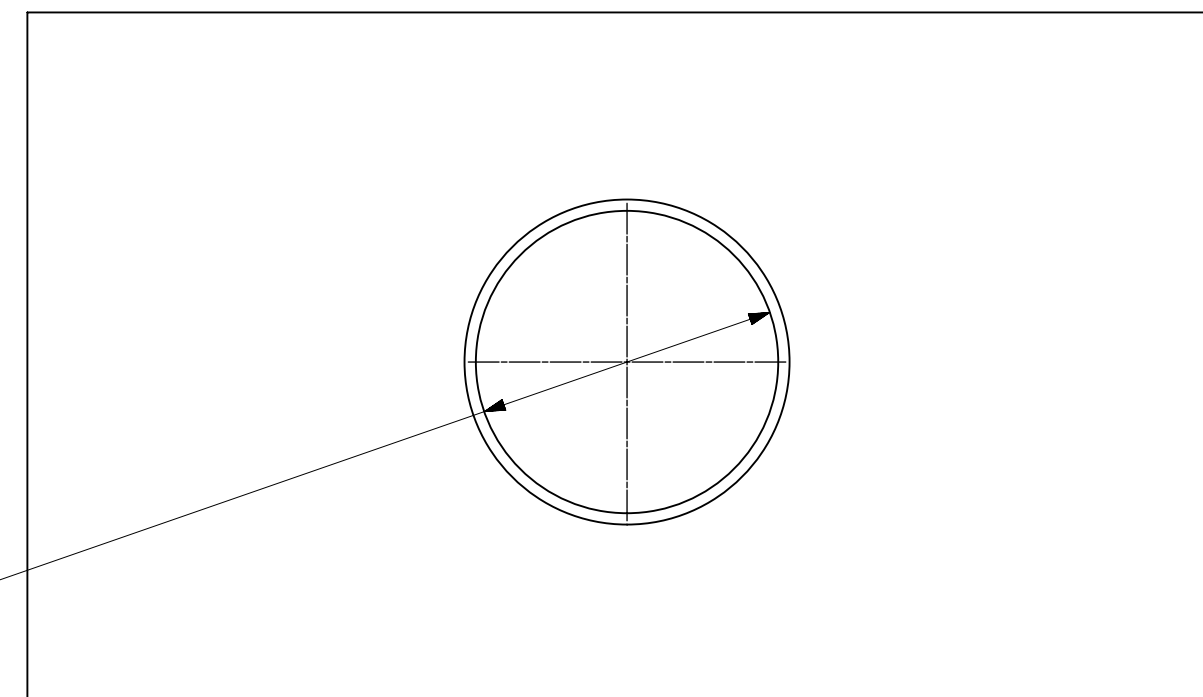
(5.00)
SEE NOTE 3

(15.50)

SECTION A-A

B

$\varnothing 8.00 \pm 0.02$
(USE REAMER)



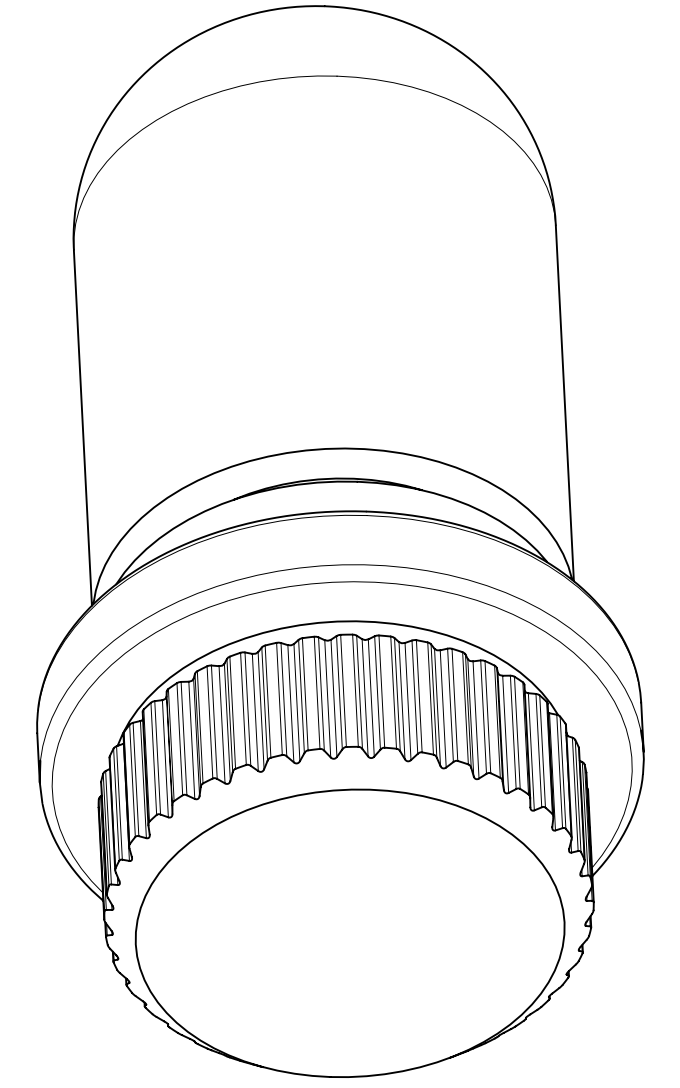
BUS BAR LAYOUT : COMPONENT SIDE

$\varnothing 8.00$ MAX

1.50

(3.50)

$\varnothing (10.00)$



NOTES:

1. MATERIALS:
BASE METAL: HIGH CONDUCTIVE COPPER ALLOY
PLATING ON BODY: 3.18 MICRON MIN SILVER OVER 1.27 MICRON MIN NICKEL
2. SILVER COMPONENTS WILL BE SUPPLIED TARNISH FREE
BUT MAY TARNISH OVER TIME.
3. MINIMUM RECOMMENDED BUSBAR THICKNESS IS 1.5MM
4. PRODUCT SPECIFICATION: 2169400001-PS
5. APPLICATION SPECIFICATION: 2169400001-AS
6. PACKAGING SPECIFICATION: BULK PACKAGING AS PER 2183350001-PK

THIS DRAWING CONTAINS INFORMATION THAT IS PROPRIETARY TO MOLEX ELECTRONIC TECHNOLOGIES, LLC AND SHOULD NOT BE USED WITHOUT WRITTEN PERMISSION

DIMENSION UNITS	SCALE	CURRENT REV DESC: PRODUCT RELEASE						
mm	NTS							
GENERAL TOLERANCES (UNLESS SPECIFIED)		EC NO: 742593		8MM SW1 PRESS-FIT LOCKING PIN				
ANGULAR TOL	$\pm 0.5^\circ$	DRWN: SREENA1	2023/03/16	PRODUCT CUSTOMER DRAWING				
4 PLACES	\pm	CHK'D: GSHARMA	2023/03/20	DOCUMENT NUMBER				
3 PLACES	\pm	APPR: HTHYAGARAJ	2023/03/20	2169390001		DOC TYPE	DOC PART	REVISION
2 PLACES	± 0.15	INITIAL REVISION:		PSD 000 A				
1 PLACE	± 0.25	DRWN: SREENA1	2023/03/16	MATERIAL NUMBER				
0 PLACES	\pm	APPR: HTHYAGARAJ	2023/03/20	2169390001		CUSTOMER		SHEET NUMBER
DRAFT WHERE APPLICABLE MUST REMAIN WITHIN DIMENSIONS		THIRD ANGLE PROJECTION	DRAWING	SERIES	MATERIAL NUMBER	CUSTOMER	SHEET NUMBER	
			D-SIZE	216939	2169390001	GENERAL MARKET	1 OF 1	