

4

3

2

1


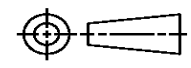
THIS DRAWING IS UNPUBLISHED. RELEASED FOR PUBLICATION
© COPYRIGHT ALL RIGHTS RESERVED.

LOC		DIST		REVISIONS			
P	LTR	DESCRIPTION		DATE	DWN	APVD	
	E1	ECR-16-009822		13JUL2016	GK	SD	

REPLACED BY OCEAN STYLE APPLICATOR PART NUMBER 2150614-1

FOR REPLACEMENT PARTS FOR APPLICATOR 1339687
REFER TO ADDITIONAL PAGE(S). SPARE PARTS KIT (IF LISTED)
WILL REMAIN AVAILABLE.

THE REPLACEMENT OCEAN STYLE APPLICATOR HAS THE
SAME TERMINATOR/PRESS INTERFACE AS APPLICATOR
1339687

THIS DRAWING IS A CONTROLLED DOCUMENT.		DWN	GOPALAKRISHNA HV			TE Connectivity			
DIMENSIONS:		CHK	GOPALAKRISHNA HV			NAME			
		TOLERANCES UNLESS OTHERWISE SPECIFIED:		END FEED HDI APPLICATOR					
		0 PLC	±	APVD	STOUGH DALE		PRODUCT SPEC		
MATERIAL		1 PLC	±	APPLICATION SPEC		SIZE	CAGE CODE	DRAWING NO	RESTRICTED TO
FINISH		2 PLC	±	WEIGHT		A3		©- 1339687	
		3 PLC	±	CUSTOMER DRAWING		SCALE	SHEET 1 OF 2	REV E1	
		4 PLC	±						
		ANGLES	±						

PART NUMBER	REV	TERMINATOR	FEED TYPE	DESCRIPTION
1339687-1	E	BENCH & LEADMAKER	MECH POST FEED	HDI APPLICATOR
7-1339687-1	E	BENCH & LEADMAKER	MECH POST FEED	-1 AND SPARE PARTS
7-1339687-7	A	-	-	SPARE PARTS KIT

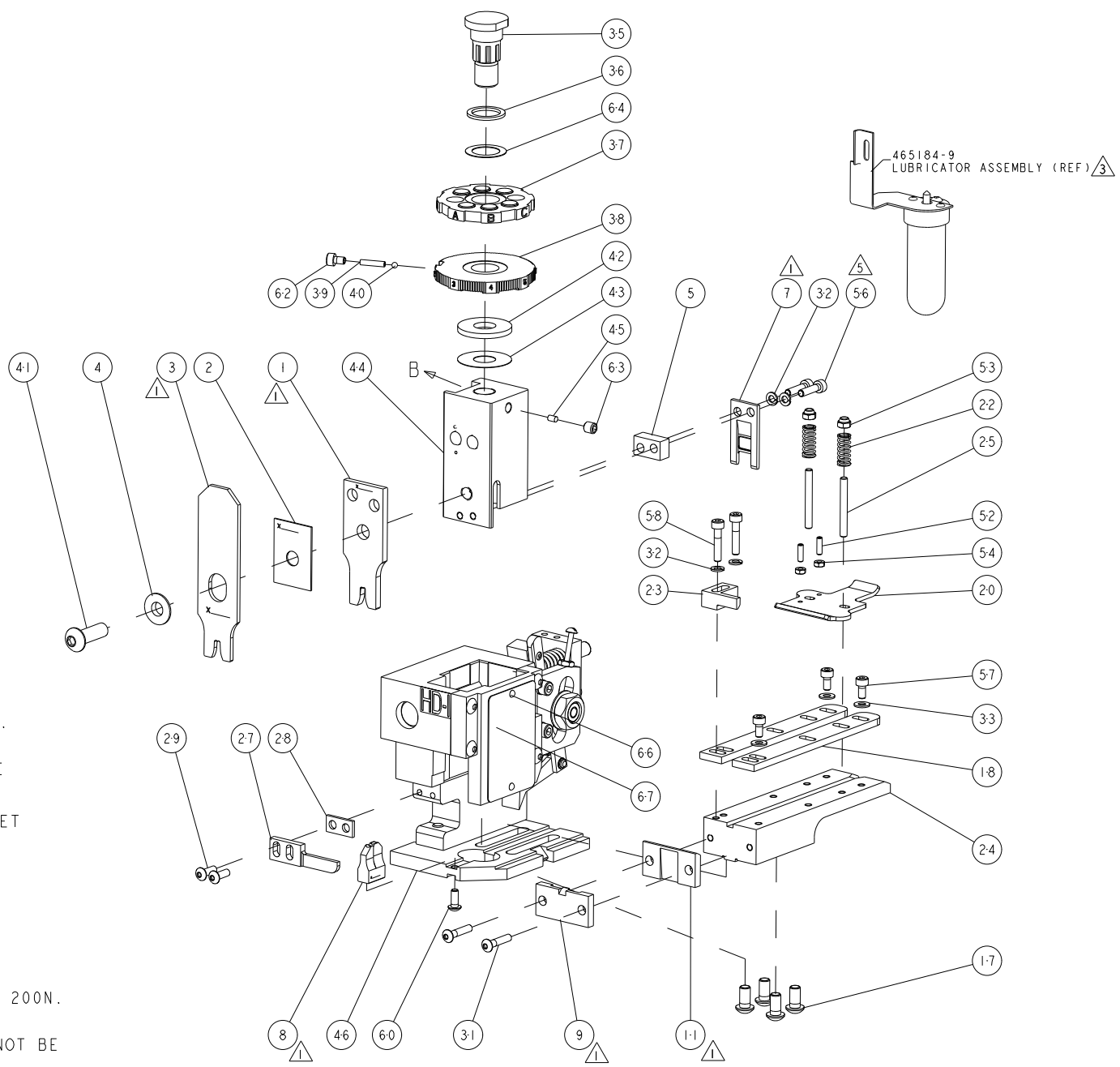
SET UP GAGE
458638-3

REVISIONS				
REV	DESCRIPTION	DATE	BY	APPD
E	ECR-12-013836	02AUG2012	L.Z	S.X

CRIMP DATA		TE TERMINAL	TE CRIMP SPECS
TERMINAL NAME: 6.3 CLIP WITH LOCKING LATCH			
CRIMP	SIZE	TYPE	RANGE
WIRE	3.40 [.134 IN]	F	2.50-4.00mm ²
INSUL	4.19 [.165 IN]	F	2.70-3.70 [.106-.146 IN]
WIRE STRIP LENGTH 5.00-5.80 [.197-.228 IN]		APPL INSTRUCTIONS 408-8323	
TERMINAL APPL SPEC C1544454		FEED 22.00 [.866 IN]	

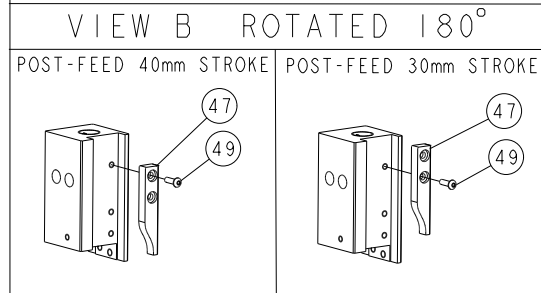
TERMINALS APPLIED			
1544454	-	-	-
-	-	-	-
-	-	-	-
-	-	-	-

WIRE SIZE	CRIMP HEIGHT	PIN PN & LENGTH [IN]
4.00mm ²	2.61 ±0.05 [.103 ±.002 IN]	2-354778-1(.2600)
3.00mm ²	2.39 ±0.05 [.094 ±.002 IN]	3-354778-9(.2690)
2.50mm ²	2.25 ±0.05 [.089 ±.002 IN]	5-354778-0(.2745)



-	1	1	1338705-2	DOCUMENTATION PACKAGE	71
-	1	1	461264-1	PLATE, IDENTIFICATION	67
-	2	2	21017-2	SCREW, DRIVE	66
-	1	1	986950-1	WASHER, FLAT PRECISION	64
-	1	1	3-18031-0	SCR, SET, CUP POINT M6 X 6.0	63
-	1	1	18023-9	SCR, SKT HD CAP M4 X 6.0	62
-	1	1	18024-7	SCR, BTN SKT HD CAP (M4 X 10.0)	60
-	2	2	1-18023-4	SCR, SKT HD CAP M4 X 20.0	58
-	3	3	1-18023-0	SCR, SKT HD CAP M4 X 8.0	57
-	2	2	1-18023-3	SCR, SKT HD CAP M4 X 16.0	56
-	2	2	18029-1	NUT, HEX, REG M3	54
-	2	2	986965-1	NUT, LOCK, HEX, TORQUE (M4)	53
-	2	2	2-18032-2	SCR, SET, FLT POINT M3 X 10.0	52
-	1	1	18024-3	SCR, BTN SKT HD CAP (M3 X 10.0)	49
-	1	1	1338676-1	CAM, UNIVERSAL POST-FEED	47
-	1	1	1338662-9	SUB ASSY, APPLICATOR FRAME	46
-	1	1	690191-1	PLUG, NYLON	45
-	1	1	1320998-1	RAM	44
-	1	1	690125-1	SHIM SUB-ASSY	43
-	1	1	690124-1	WASHER, RAM (.115)	42
-	1	1	2-18024-6	SCR, BTN SKT HD CAP (M8 X 25.0)	41
-	1	1	23241-1	BALL, STEEL	40
-	1	1	2-22278-7	SPRING, COMPRESSION	39
-	1	1	1320922-1	DISC, ADJUST, INSULATION CRIMP	38
-	1	1	354777-1	WIRE DISC, ASSEMBLY	37
-	1	1	22480-5	SPRING, COMPRESSION	36
-	1	1	690212-1	POST, RAM	35
-	3	3	18027-2	WASHER, FLAT, REG M4	33
-	4	4	18025-2	WASHER, SPRG LOCK, REG M4	32
-	2	2	1-18024-0	SCR, BTN SKT HD CAP (M4 X 20.0)	31
-	2	2	18024-8	SCR, BTN SKT HD CAP (M4 X 12.0)	29
-	1	1	3-690451-2	SPACER, STRIPPER	28
-	1	1	240639-1	STRIPPER (MACHINING)	27
-	2	2	1320906-1	STUD, THREADED	25
-	1	1	1320995-6	PLATE, STRIP GUIDE	24
-	1	1	240825-1	PLATE, STRIP HOLD DOWN	23
-	2	2	4-22281-1	SPRING, DRAG	22
-	1	1	1338665-1	DRAG	20
-	2	2	1338663-8	GUIDE, LOWER STRIP	18
-	4	4	1-18024-8	SCR, BTN SKT HD CAP (M6 X 12.0)	17
-	1	1	240833-4	PLATE, REAR SHEAR	11
-	-	-	-	-	10
-	1	1	4-690495-6	PLATE, FRONT SHEAR	9
-	1	2	4-1633383-1	ANVIL, COMBINATION	8
-	1	1	690474-2	BLADE, SLUG	7
-	-	-	-	-	6
-	1	1	7-240641-2	SPACER	5
-	1	1	238009-4	BLOCK, FL CRIMPER SPACER	4
-	1	2	7-1633471-1	CRIMPER, INSULATION F	3
-	1	1	455888-7	SPACER, CRIMPER	2
-	1	2	9-1673600-8	CRIMPER, WIRE	1
-	77	71	-1	PART NO	ITEM NO

- △ RECOMMENDED SPARE PARTS.
- 2. GREASE RAM, CAM, CAM FOLLOWER AND FEED ROD LIGHTLY.
- △ CERTAIN TERMINALS REQUIRE LUBRICATION. REFER TO THE APPLICATOR INSTRUCTION SHEET FOR MORE INFORMATION.
- 4. LUBRICATE DAILY PER THE APPLICATOR INSTRUCTION SHEET SUPPLIED WITH THE APPLICATOR.
- △ CUT TO LENGTH AT ASSEMBLY.
- △ SEE DRG C1544454 FOR SPECIFIC WIRE DETAILS.
- △ 4.00mm² WIRE SIZE WILL NOT MEET TENSILE VALUE SHOWN ON DRG C1544454. ACHIEVABLE TENSILE VALUE IS 200N.
- △ INSULATION CRIMP HEIGHTS SHOWN ON DRG C1544454 CANNOT BE RECOMMENDED BY TYCO ELECTRONICS UK LTD.



DIMENSIONS: INCHES		TOLERANCES UNLESS OTHERWISE SPECIFIED:		APVD: M. CLIFFORD		NAME: END FEED HDI APPLICATOR	
0	PLC	±		0	PLC	±	
1	PLC	±	.01	1	PLC	±	.01
2	PLC	±	.001	2	PLC	±	.001
3	PLC	±	.0001	3	PLC	±	.0001
4	PLC	±	.00001	4	PLC	±	.00001
MATERIAL:		FINISH:		WEIGHT:		RESTRICTED TO:	
-		-		-		-	