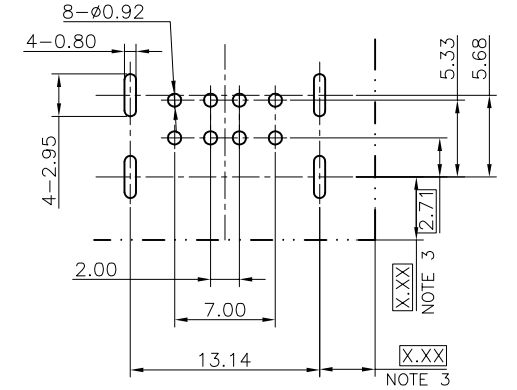
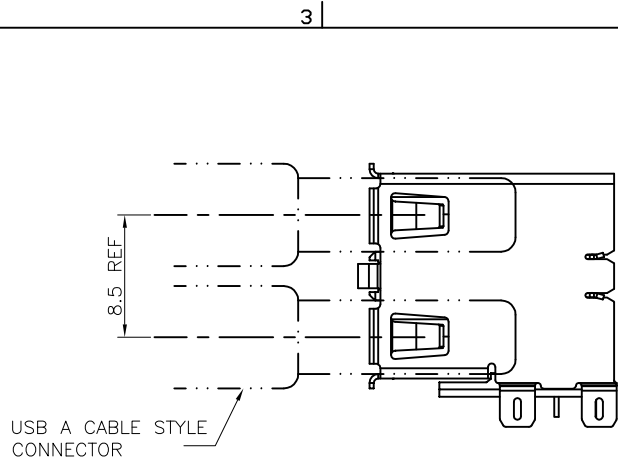
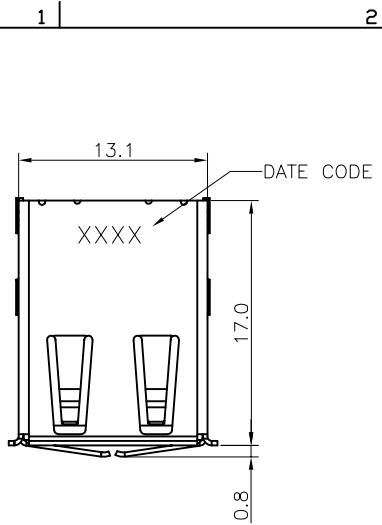
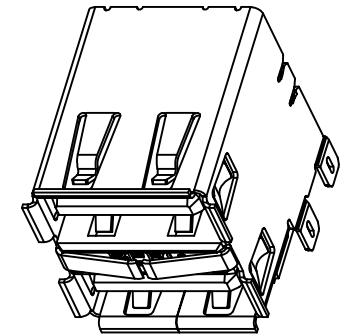
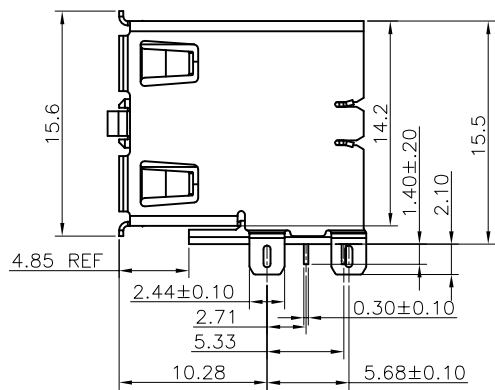
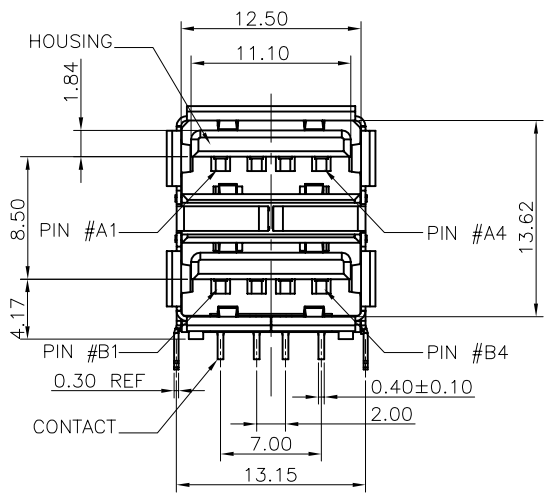




Copyright FCI.



RECOMMENDED PCB DIMENSIONS  
TOLERANCE: ±0.05



mat'l code NOTE 1 & 2		tolerance unless otherwise specified		CUSTOMER COPY		 www.fciconnect.com	
rev	ecn no.	dr	date	linear	.0 ± .25 .00 ± .15 .000± .10	projection	title UNIV. SERIAL BUS DOUBLE DECK RECEPTACLE
A	/	LG	5/4/14				
B	ELX-N-18470	LG	8/6/14	angles	0° ± 3°		product family USB size dwg no. 10129335
				dr	LIQING LEI 5/4/14		
				engr	LIQING LEI 8/6/14	MM	NT
				chr	ZK.HU 8/6/14	scale	sheet
				appd	RICK BAIN 8/6/14	2:1	1 OF 3
sheet	revision	B					
index	sheet	1-3					



Copyright FCI.

PRODUCT NUMBER CODE 10129335 - X X 0 0 X X X LF

BASE PRODUCT NUMBER \_\_\_\_\_

HOUSING COLOR OPTIONS \_\_\_\_\_  
 1 - WHITE  
 2 - BLACK

SHELL PLATING OPTIONS \_\_\_\_\_  
 1 - 2.5um MINIMUM NICKEL PLATING ONLY

EXTENSION CODE \_\_\_\_\_

TERMINAL OPTION \_\_\_\_\_  
 1 - 30u" GXT CONTACT AREA,100u" MATTE TIN TAIL AREA  
 2 - 30u" GOLD CONTACT AREA,100u" MATTE TIN TAIL AREA


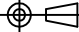
PACKAGING OPTIONS \_\_\_\_\_  
 B - TUBES  
 R - TAPE & REEL

DATE CODE OPTION \_\_\_\_\_  
 P - WITH DATE CODE  
 N - WITHOUT DATE CODE

LEAD FREE MARK \_\_\_\_\_

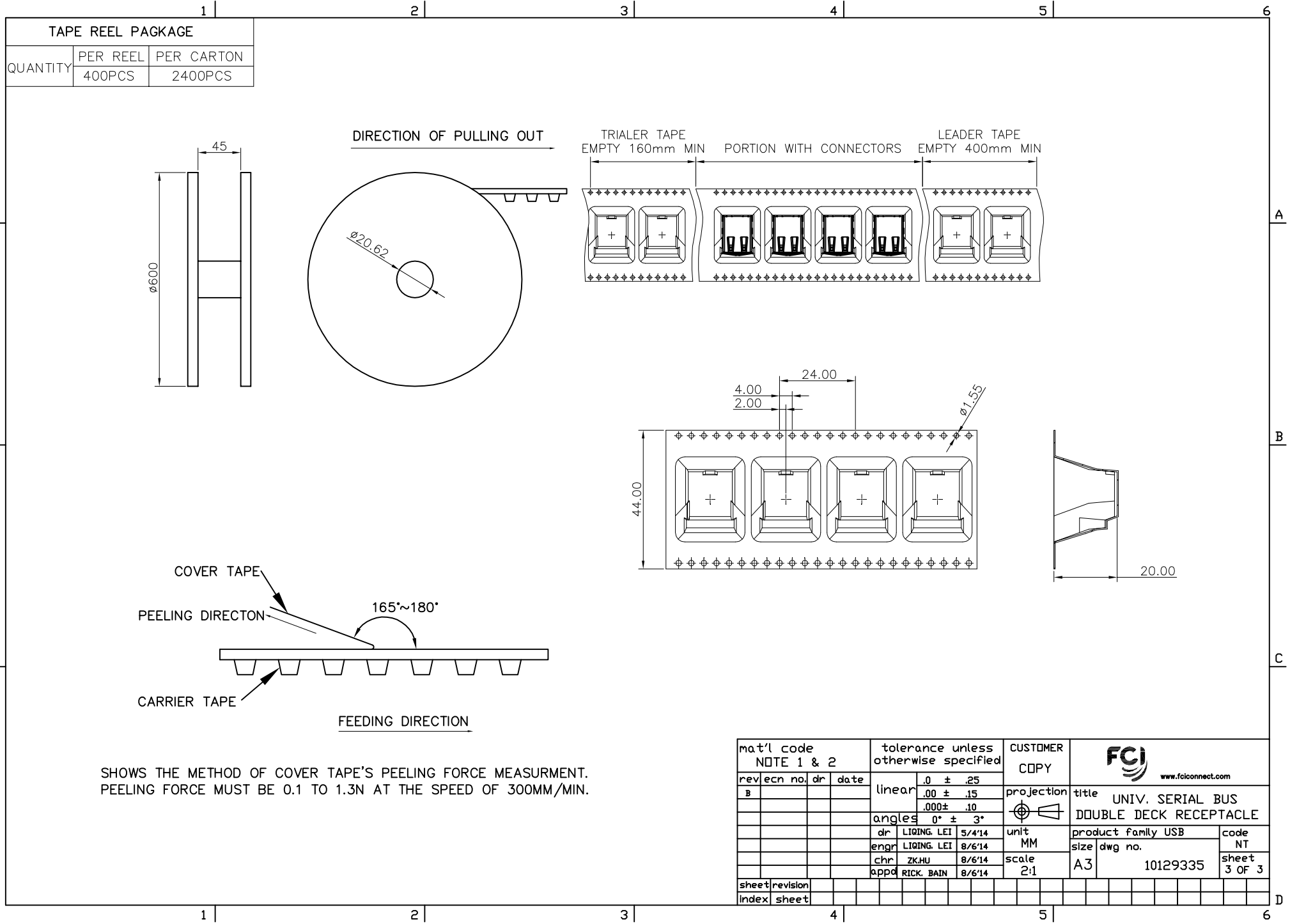
NOTES:

- 1.MATERIAL:  
 CONTACTS: COPPER ALLOY  
 SHELL: COPPER ALLOY  
 HOUSING: HIGH TEMPERATURE THERMOPLASTIC.UL94V-0
- 2.PLATING:  
 SEE THE PRODUCT NUMBER CODE
- 3.DATUM AND BASIC DIMENSIONS ESTABLISHED BY CUSTOMER.
- 4.RECOMMENDED PC BOARD THICKNESS OF 1.57mm.
- 5.THE HOUSING WILL WITHSTAND EXPOSURE TO 260°C PEAK TEMPERATURE FOR 20 SECONDS IN A CONVECTION, INFRA-RED OR VAPOR PHASE REFLOW OVEN.
- 6.THE PRODUCT MEET EUROPEAN UNION DIRECTIVES AND OTHER COUNTRY REGULATION AS DESCRIBED IN GS-22-008
- 7.PRODUCT SPECIFICATION:GS-12-095

mat'l code NOTE 1 & 2		tolerance unless otherwise specified		CUSTOMER COPY		 www.fciconnect.com	
rev	ecn no.	dr	date	linear	.0 ± .25	projection	 title UNIV. SERIAL BUS DOUBLE DECK RECEPTACLE
B				.00 ± .15	.000± .10		
				angles	0° ± 3°		
		dr	LIQING. LEI	5/4/14	unit	MM	product family USB
		engr	LIQING. LEI	8/6/14	scale	A3	code NT
		chr	ZK.HU	8/6/14	scale	2:1	size dwg no.
		appd	RICK. BAIN	8/6/14			10129335
sheet	revision						sheet 2 OF 3
index	sheet						



Copyright FCI.



SHOWS THE METHOD OF COVER TAPE'S PEELING FORCE MEASUREMENT.  
PEELING FORCE MUST BE 0.1 TO 1.3N AT THE SPEED OF 300MM/MIN.

mat'l code NOTE 1 & 2		tolerance unless otherwise specified		CUSTOMER COPY		FCI www.fciconnect.com	
rev	ecn no.	dr	date	linear	.0 ± .25	projection	title UNIV. SERIAL BUS DOUBLE DECK RECEPTACLE
B					.00 ± .15		
				angles	0° ± 3°		unit
				dr	LIQING. LEI 5/4/14	MM	code NT
				engr	LIQING. LEI 8/6/14	scale	size dwg no.
				chr	ZK.HU 8/6/14	2:1	A3
				appd	RICK. BAIN 8/6/14		10129335
sheet	revision						3 OF 3
index	sheet						