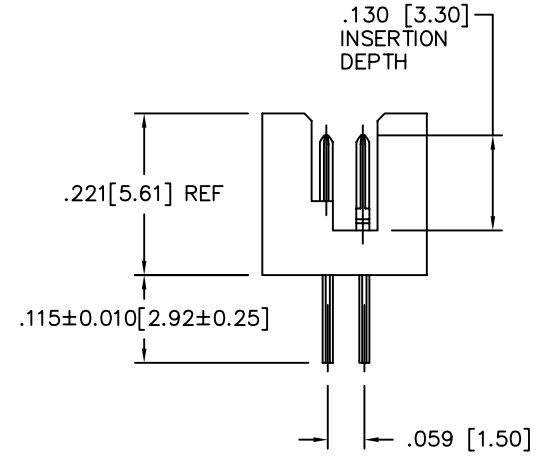
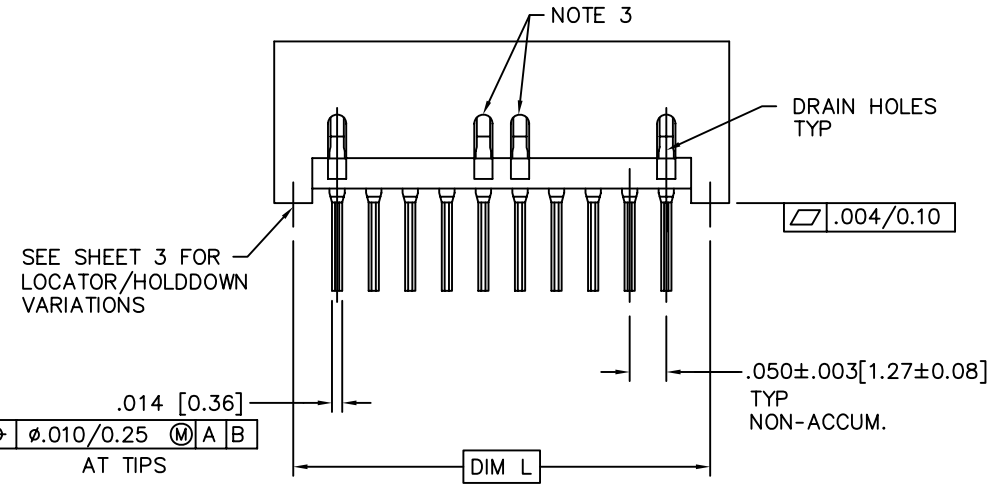
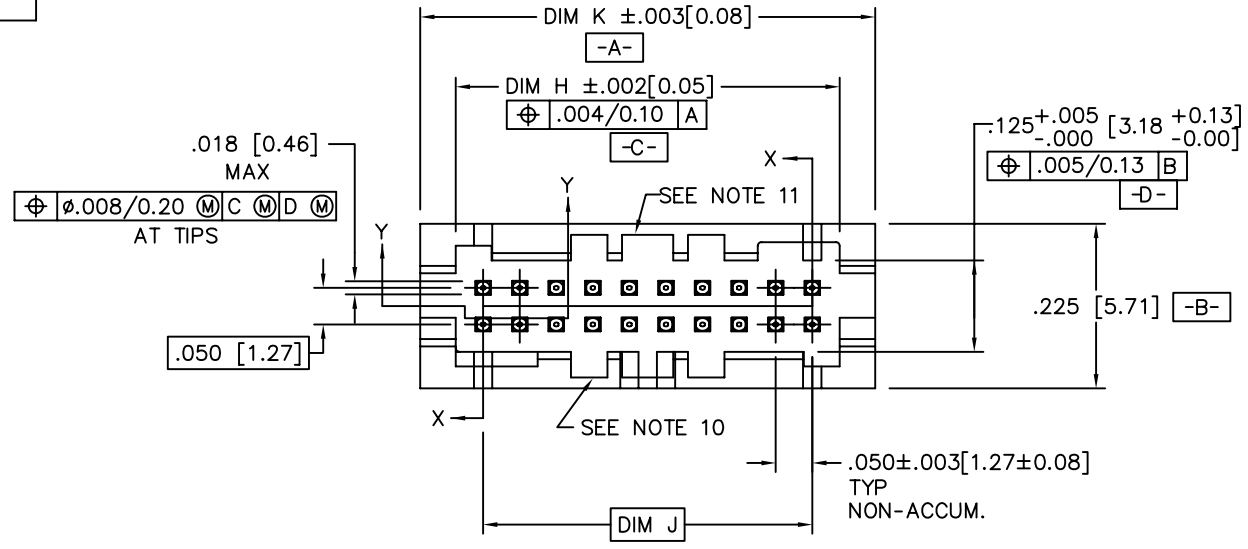


PRODUCT NUMBER
SEE TABLE

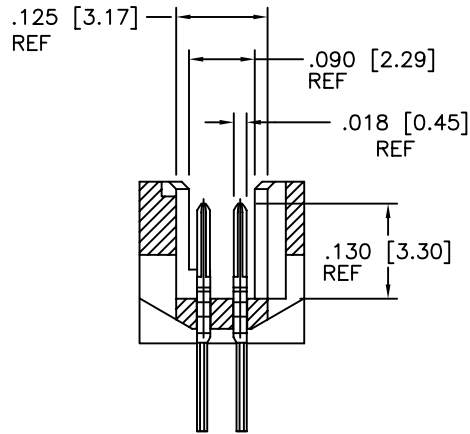


FCIconnect.com

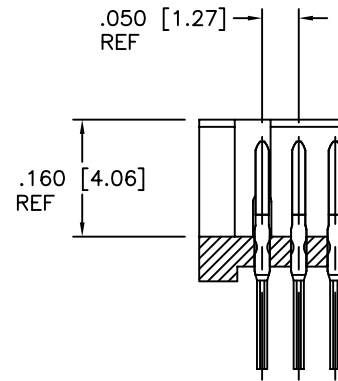
Copyright FCI

mat'l. code		surface		tolerance		projection		product family	
-		ISO 1302 ✓		ISO 406		ISO 1101		RIBCAGE	
ltr	ecn	nldr	date	tolerances unless otherwise specified		INCH/MM		title	
A	-	GM	2013-01-15	angles	.XX±.01/0.3	scale 4:1		RIBCAGE III T/M	
B	ELX-N-14348	GM	2013-03-27	linear	.XXX±.005/0.13			VERT. HEADER ASS'Y	
-	-	-	-	0°±2'	.XXXX±.0020/0.051			dwg no	
-	-	-	-	dr	GM SUN	2013-01-15	sheet 1 of 3		size
-	-	-	-	enr	GM SUN	2013-01-15	10124053		
-	-	-	-	chr	RICK BIAN	2013-01-15	type		Product Customer Drawing
-	-	-	-	appd	RICK BIAN	2013-01-15			
sheet	revision	B	B						
index	sheet	1	2	3					

SIZE	DIM H	DIM J	DIM K	DIM L
2X5	.275/6.99	.200/5.08	.372/9.45	.320/8.13
2X10	.525/13.34	.450/11.43	.622/15.80	.570/14.48
2X15	.775/19.68	.700/17.78	.872/22.15	.820/20.83
2X20	1.025/26.03	.950/24.13	1.122/28.50	1.070/27.18
2X25	1.275/32.38	1.200/30.48	1.372/34.85	1.320/33.53
2X30	1.525/38.74	1.450/36.83	1.622/41.20	1.570/39.88
2X35	1.775/45.08	1.700/43.18	1.872/47.55	1.820/46.23
2X40	2.025/51.43	1.950/49.53	2.122/53.90	2.070/52.58
2X45	2.275/57.78	2.200/55.88	2.372/60.25	2.320/58.93
2X50	2.525/64.14	2.450/62.23	2.622/66.60	2.570/65.28



SECTION X-X
ROTATED 90° CW



SECTION Y-Y

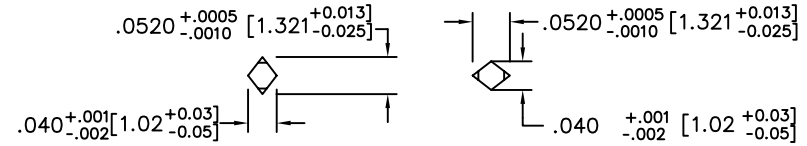
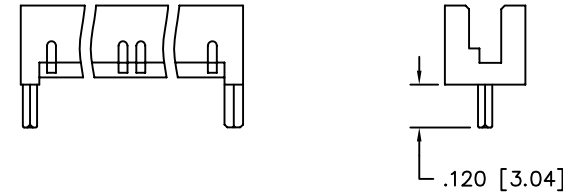
mat'l. code		surface		tolerance		projection		product family	
-		ISO 1302 ✓		ISO 406 ISO 1101				RIBCAGE	
ltr		ecn no		dr		date		title	
B								RIBCAGE III T/M VERT. HEADER ASS'Y	
		angles		linear		INCH/MM		scale 4:1	
								dwg no	
								sheet 2 of 3 size	
								10124053	
								type	
								Product Customer Drawing	
sheet index		revision sheet							



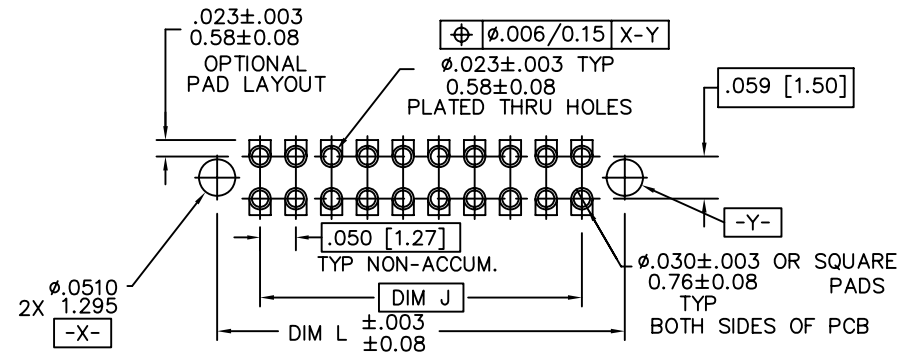
Copyright FCJ

NOTES:

1. 10124053-01-1XXLF
 LEAD FREE OPTION (NOTE 7,8)
 NUMBER OF POSITIONS (NOTE 2)
2. NUMBER OF POSITIONS = 05 THRU 50 IN 5 POS INCREMENTS.
 (EXAMPLE: 105=10 POS., 110=20 POS. ETC.)
3. REQUIRED ON -X40,-X45 & -X50 POSITION PARTS ONLY.
4. PACKAGE PER BUS-14-179.
5. HOUSING MATERIAL:
 GLASS FILLED THERMOPLASTIC FLAME RETARDANT
 PER UL 94V-0.
 COLOR: NATURAL
6. TERMINAL PLATING:
 30u" MIN GOLD OVER 50u" Ni ON CONTACT ZONES.
 GOLD FLASH OVER 50u" Ni ON OTHERWISE ALL ZONES.
7. ADD "LF" SUFFIX AT THE END OF PART NUMBER FOR
 LEAD FREE OPTION.
8. THIS PRODUCT MEETS EUROPEAN UNION DIRECTIVES AND OTHER
 COUNTRY REGULATION AS DESCRIBED IN GS-22-008.
9. THE HOUSING WILL WITHSTAND EXPOSURE TO 260°C PEAK TEMPERATURE
 FOR 15 SECONDS IN A WAVE SOLDER APPLICATION WITH A 1.5mm
 MINIMUM THICK CIRCUIT BOARD. SEE APPLICATION NOTES/PROCEDURES
 IF THEY ARE AVAILABLE.
10. MOLDING FLOW RESTRICTOR QUANTITY AND LOCATION IS
 MANUFACTURING OPTION.
11. VACUUM CAP SLOT REQUIRED ON ALL SIZES, SLOT MAY
 BE LOCATED ON OPPOSITE SIDE FOR 2 X 5.
12. PRODUCT SPECIFICATION PER BUS-12-087.



LOCATOR/HOLDDOWN VARIATIONS



RECOMMENDED P. C. B. LAYOUT

mat'l. code		surface		tolerance		projection		product family	
-		ISO 1302 ✓		ISO 406		ISO 1101		RIBCAGE	
ltr		ecn		no		dr		date	
B									
		angles		linear		INCH/MM		title	
		0°±2'		.XX±.01/0.3		scale 4:1		RIBCAGE III T/M	
				.XXX±.005/0.13				VERT. HEADER ASS'Y	
				.XXXX±.0020/0.051				dwg no	
		dr		GM SUN		2013-01-15		sheet 3 of 3	
		enr		GM SUN		2013-01-15		size	
		chr		RICK BIAN		2013-01-15		10124053	
		appd		RICK BIAN		2013-01-15		type	
								Product Customer Drawing	
sheet		revision							
index		sheet							



FCIconnect.com

Copyright FCI