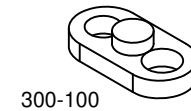
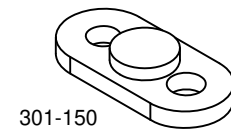
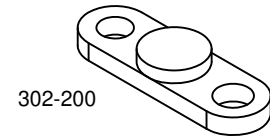
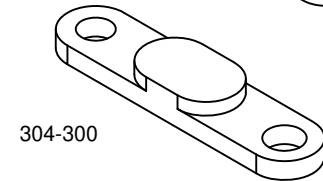
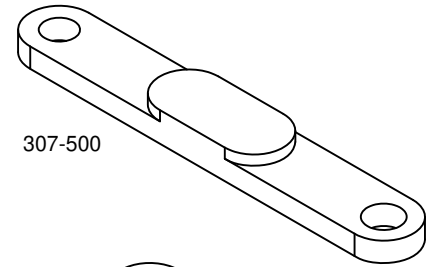
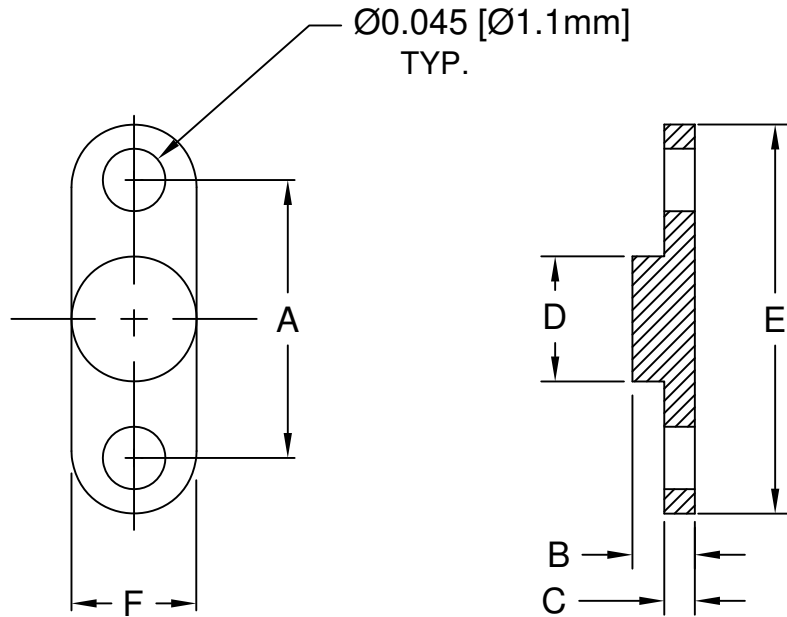


| REV. | DESCRIPTION | DATE | APPROVED |
|------|---|----------|----------|
| B | TYPO Correction | 03/14/03 | M. C. |
| C | Release for Re-Tool | 11/10/03 | M. C. |
| D | Release for Quotation | 02/19/04 | M. C. |
| E | Production Release | 03/26/04 | M. C. |
| F | Removed Part Number in Part Offering List | 05/06/15 | J. C. |
| G | Removed Material Code | 05/23/16 | J. C. |



| PART NO. | A | B | C | D | E | F |
|-------------|---------------|--------------|--------------|--------------|---------------|--------------|
| 300-100 | .100 (2.5mm) | .045 (1.1mm) | .022 (.55mm) | .050 (1.3mm) | .180 (4.6mm) | .090 (2.3mm) |
| 300-100-075 | .100 (2.5mm) | .075 (1.9mm) | .022 (.55mm) | .055 (1.4mm) | .180 (4.6mm) | .090 (2.3mm) |
| 301-150 | .150 (3.8mm) | .045 (1.1mm) | .022 (.55mm) | .090 (2.3mm) | .270 (6.9mm) | .125 (3.2mm) |
| 302-200-030 | .200 (5.1mm) | .030 (.76mm) | .011 (.28mm) | .090 (2.3mm) | .290 (7.4mm) | .090 (2.3mm) |
| 302-200-040 | .200 (5.1mm) | .040 (1.0mm) | .022 (.55mm) | .090 (2.3mm) | .290 (7.4mm) | .090 (2.3mm) |
| 302-200 | .200 (5.1mm) | .045 (1.1mm) | .022 (.55mm) | .090 (2.3mm) | .290 (7.4mm) | .090 (2.3mm) |
| 303-250 | .250 (6.4mm) | .045 (1.1mm) | .026 (.66mm) | .090 (2.3mm) | .340 (8.6mm) | .090 (2.3mm) |
| 304-300 | .300 (7.5mm) | .045 (1.1mm) | .026 (.66mm) | .140 (3.6mm) | .390 (9.9mm) | .090 (2.3mm) |
| 305-350 | .350 (8.9mm) | .045 (1.1mm) | .030 (.76mm) | .140 (3.6mm) | .440 (11.2mm) | .090 (2.3mm) |
| 306-400 | .400 (10.2mm) | .045 (1.1mm) | .030 (.76mm) | .190 (4.8mm) | .490 (12.4mm) | .090 (2.3mm) |
| 307-500 | .500 (12.7mm) | .045 (1.1mm) | .030 (.76mm) | .190 (4.8mm) | .590 (15.0mm) | .090 (2.3mm) |

| STANDARD TOLERANCE (UNLESS OTHERWISE SPECIFIED) | |
|--|---------|
| DECIMALS | ANGULAR |
| .X ± .1 | X° ± 1° |
| .XX ± .01 | |
| .XXX ± .005 | |

BIVAR[®]

4 THOMAS, IRVINE, CA. 92618
TEL: (949) 951-8808 FAX: (949) 951-3974

TITLE: CAPACITOR MOUNT,
300 SERIES

| | | | |
|-----------------------------|--------------------------|--------------------------------|------------------------------|
| DESIGNED: M. Chen | DATE: 03/07/03 | PART NO: 30X-XXX-XXX | REVISION: G |
| CHECKED: D. Green | DATE: 03/07/03 | CAGE CODE : 32559 | SHEET # 1 OF 1 |

2. MATERIAL: NYLON 6/6, 94V-2, NATURAL.

1. GENERAL SPECIFICATIONS: BIVAR MOLDED COMPONENT SPECIFICATION BV00-E101.

CAD GENERATED DOCUMENT, DO NOT MEASURE DRAWING.