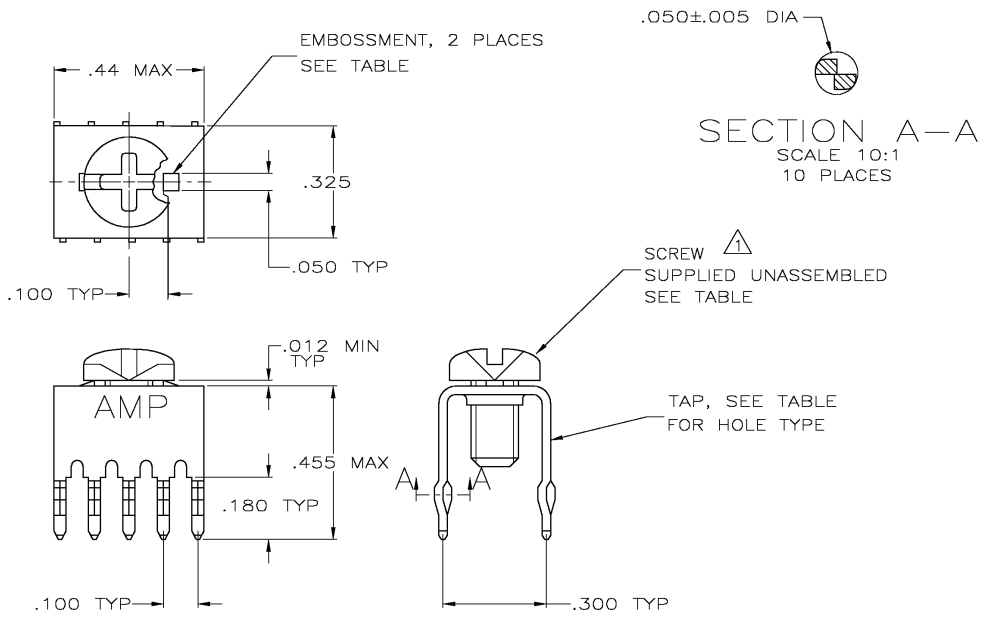
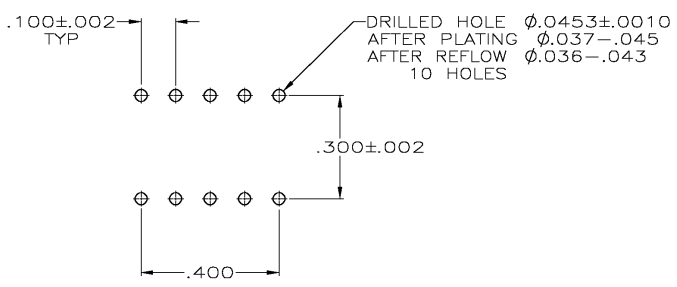


LOC	DIST	REVISIONS				
P	U/R	DESCRIPTION	DATE	DWN	APVD	
GP	00	L	REV PER EC 0512-0217-03	12MAY03	AWF	AWF



- ① TO PREVENT THREAD STRIPPING, SCREW TORQUE SHOULD NOT EXCEED 9 IN LBS.
- ② TAP HOLE IS 6-32UNC-2B, TWO MIN THREADS.
- ③ TAP HOLE IS M4 X 0.7, TWO MIN THREADS.
- ④ TAP: .000150 TIN-LEAD OVER .000050 NICKEL.
- ⑤ TAP: .000150 TIN OVER .000050 NICKEL.



SUPERSEDED BY -4	FINISH	HOLE TYPE	SCREW	EMBOSSMENT	PART NUMBER
			993879-1	YES	9-55558-1
			NO	YES	9-55558-0
			NO	YES	1-55558-1
			993879-1	NO	55558-8
			NO	NO	55558-7
			993879-1	YES	55558-4
			NO	YES	55558-3

THIS DRAWING IS A CONTROLLED DOCUMENT.

DWN: J. McCLINTON 1-11-88	Tyco Electronics Corporation City, State, Zip
CHK: R. STONE 1-11-88	
APVD: M. GALLOWAY 1-11-88	NAME: TAP, POWER DISTRIBUTION
DIMENSIONS: INCHES	PRODUCT SPEC
TOLERANCES UNLESS OTHERWISE SPECIFIED:	APPLICATION SPEC
0 PLC ± -	SIZE: A2
1 PLC ± -	CODE: 00779
2 PLC ± -	DRAWING NO: C-55558
3 PLC ± .008	RESTRICTED TO: -
4 PLC ± -	WEIGHT: -
ANGLES ± -	FINISH: ④ ⑤
MATERIAL: COPPER ALLOY 725.	CUSTOMER DRAWING
SCALE: 4:1	SHEET: 1 OF 1
REV: L	

55558