

DO NOT SCALE FROM THIS PRINT

DESIGNED AND DIMENSIONS IN MILLIMETERS [INCHES]

ERM8-XXX-01-X-D-EMX-XXXX-XX

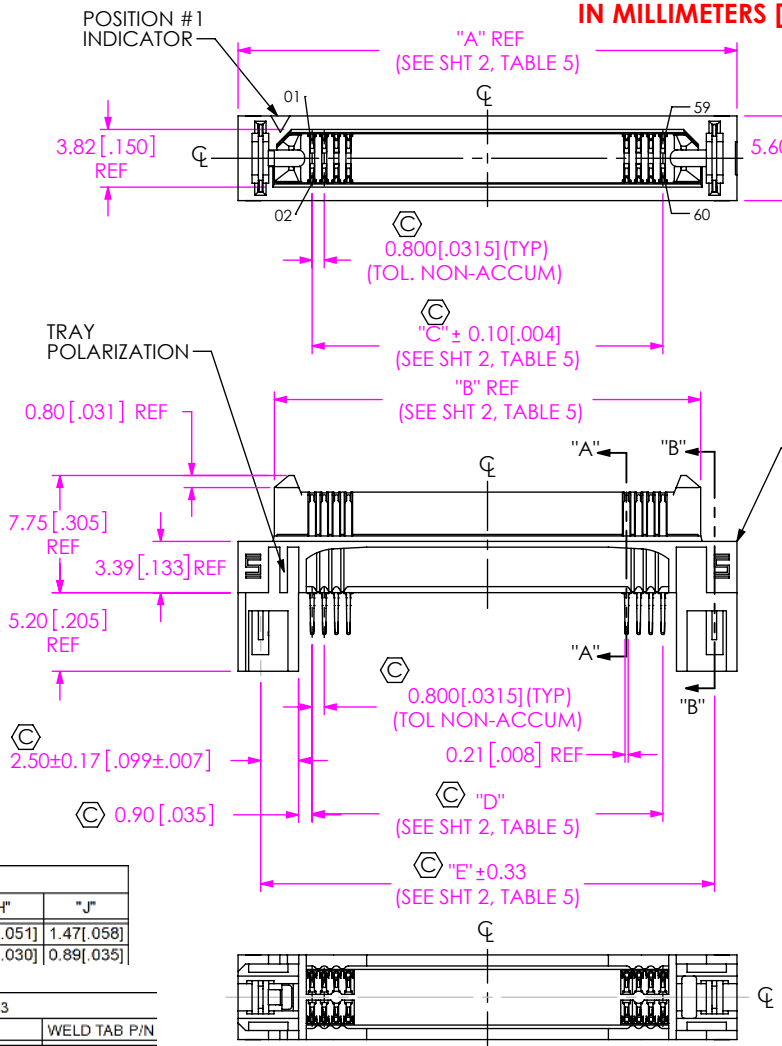


FIG 1 (ERM8-030-01-X-D-EM2 SHOWN) (SOME CENTER FEATURES NOT SHOWN FOR CLARITY)

| BOARD | "G" | "H" | "J" |
|-------|------------|------------|------------|
| -EM2 | 2.77[.109] | 1.30[.051] | 1.47[.058] |
| -EM4 | 2.62[.103] | 0.77[.030] | 0.89[.035] |

| ASSEMBLY P/N | WELD TAB P/N |
|--------------------------|--------------|
| ERM8-XXX-01-X-D-EM2 | WT-29-04-F |
| ERM8-XXX-01-X-D-EM2-SL | WT-29-07-H |
| ERM8-XXX-01-X-D-EM4 | WT-29-05-F |
| ERM8-XXX-01-X-D-EM2-L | WT-29-01-F |
| ERM8-XXX-01-X-D-EM4-L | WT-29-02-F |
| ERM8-XXX-01-X-D-EM2-EGPS | SH29-XX-03-N |
| ERM8-XXX-01-X-D-EM4-EGPS | SH29-XX-04-N |

| OPTION | TAIL OPTION | BODY P/N | CONTACT P/N |
|-------------------------|-------------|-------------------|-------------|
| NONE, -L, -SL, OR -EGPS | -EM2 | ERM8-XXX-01-D-EM2 | T-1M47-01-X |
| | -EM4 | ERM8-XXX-01-D-EM4 | T-1M47-02-X |
| -DS | -EM2 | ERM8-XXX-01-D-EM2 | T-1M47-03-X |
| | -EM4 | ERM8-XXX-01-D-EM4 | T-1M47-04-X |

NO OF POSITIONS (PER ROW)
 -005, -010, -011, -013, -020, -025, -030, -035, -040, -049, -050, -060, -070, -075, **,-100

LEAD STYLE
 -01

PLATING SPECIFICATION
 -L: LIGHT SELECTIVE GOLD / MATTE TIN (USE T-1M47-XX-L)
 -S: SELECTIVE GOLD / MATTE TIN (USE T-1M47-XX-S)

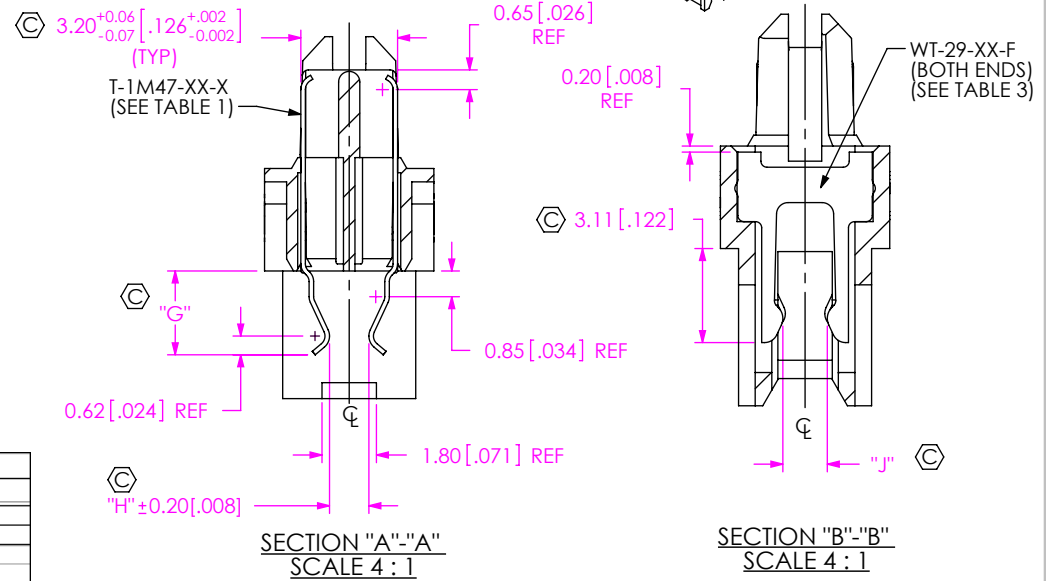
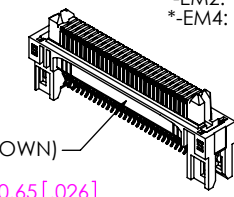
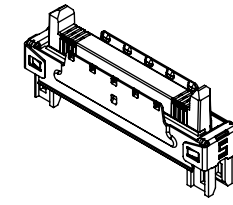
ROW SPECIFICATION
 -D: DOUBLE

PACKAGING
 -TR: TAPE & REEL (SEE NOTES 6, 7 & 8)
 -FR: FULL REEL QTY TAPE & REEL (SEE NOTES 7 & 8)
 -TY: TRAY (SEE NOTES 6 & 7)

OPTIONS
 -DS: DIFFERENTIAL PAIR (SEE FIG 2, SHT 2) (HOT SWAP) (AVAILABLE IN -010, -013, -025, -040 AND -049 POSITIONS ONLY)
 -L: LATCHES (SEE FIG 2, SHT 2)
 -SL: SQUEEZE LATCH (SEE FIG 4, SHT 3) (USE WT-29-07-H)
 -EGPS: EXTENDED GUIDE POST SHIELD (SEE FIG 5, SHT 4) (AVAILABLE IN -010, -020, -025, AND -30 POSITIONS ONLY)
 -DSS: DIFFERENTIAL PAIR AND EXTENDED GUIDE POST SHIELD (AVAILABLE IN -010 & -025 POSITIONS ONLY)

TAIL SPECIFICATION
 -EM2: 1.58mm(.062) THICK PCB
 *EM4: 1.00mm(.039) THICK PCB

* = NOT TOOLED
 ** = NOT RELEASED



SECTION "A"- "A" SCALE 4:1

SECTION "B"- "B" SCALE 4:1

NOTES:

1. Ⓢ REPRESENTS A CRITICAL DIMENSION.
2. MAXIMUM BURR ALLOWANCE: 0.038[.0015]
3. MINIMUM PUSHOUT FORCE: SIGNAL 2.22 N [.5 LB.], WELD TAB 4.45N [1 LB.].
4. NOTE DELETED.
5. NOTE DELETED.
6. -TR/-FR PACKAGING NOT AVAILABLE ON THE -100 POSITION; -TY AVAILABLE ON -100 POSITION ONLY.
7. ORDERS WILL BE PACKAGED ACCORDING TO THE SAMTEC PACKAGING EFFICIENCY STANDARDS (SPES) FOUND ON WWW.SAMTEC.COM.
8. ATTACH LABEL TO EACH REEL.

UNLESS OTHERWISE SPECIFIED, DIMENSIONS ARE IN MILLIMETERS [INCHES]. TOLERANCES ARE:
 DECIMALS ANGLES
 X.X: ±0.3 [.01] 2°
 X.XX: ±0.13 [.005]
 X.XXX: ±0.050 [.0020]

PROPRIETARY NOTE
 THIS DOCUMENT CONTAINS CONFIDENTIAL AND PROPRIETARY INFORMATION AND ALL DESIGN, MANUFACTURING, REPRODUCTION, USE, PATENT RIGHTS AND SALES RIGHTS ARE EXPRESSLY RESERVED BY SAMTEC, INC. THIS DOCUMENT SHALL NOT BE DISCLOSED, IN WHOLE OR PART, TO ANY UNAUTHORIZED PERSON OR ENTITY NOR REPRODUCED, TRANSFERRED OR INCORPORATED IN ANY OTHER PROJECT IN ANY MANNER WITHOUT THE EXPRESS WRITTEN CONSENT OF SAMTEC, INC.



520 PARK EAST BLVD. NEW ALBANY, IN 47150
 PHONE: 812-944-6733 FAX: 812-948-5047
 e-Mail: info@SAMTEC.com code: 55322

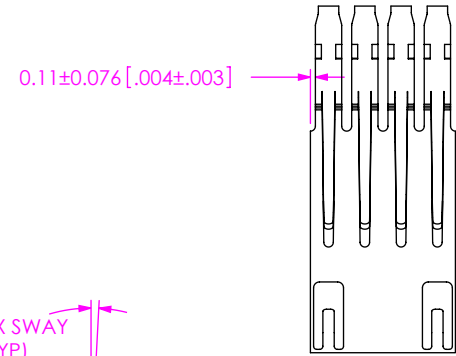
MATERIAL: DO NOT SCALE DRAWING SHEET SCALE: 2:1
 INSULATOR: LCP UL94V-0, COLOR: BLACK
 TERMINALS: PHOS BRONZE
 LATCHES: BeCu
 SHIELD: PHOS BRONZE

DESCRIPTION:
 0.8MM EDGE RATE TERMINAL ASSEMBLY

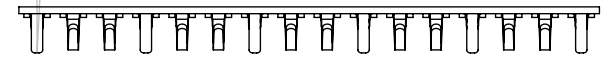
DWG. NO.
 ERM8-XXX-01-X-D-EMX-XXXX-XX

BY: C. PIERCE 10/23/2006 SHEET 1 OF 4

| TABLE 5 | | | | | | |
|----------|---------------|---------------|---------------|-----------------|--------------|---------------|
| POSITION | "A" | "B" | "C" | "D" | "E" | "F" |
| -005 | 13.00 [.512] | 8.20 [.323] | 3.20 [.126] | 3.200 [.1260] | 10.0 [.394] | 8.90[0.350] |
| -010 | 17.00 [.669] | 12.20 [.480] | 7.20 [.284] | 7.200 [.2835] | 14.0 [.551] | 12.90[0.508] |
| -011 | 17.80 [.700] | 13.00 [.519] | 8.00 [.315] | 8.000 [.3150] | 14.8 [.583] | 13.70 [.539] |
| -013 | 19.40 [.764] | 14.60 [.575] | 9.60 [.378] | 9.600 [.3780] | 16.4 [.646] | 15.30[0.602] |
| -020 | 25.00 [.984] | 20.20 [.796] | 15.20 [.598] | 15.200 [.5984] | 22.0 [.866] | 20.90[0.823] |
| -025 | 29.00 [1.142] | 24.20 [.953] | 19.20 [.756] | 19.200 [.7559] | 26.0 [1.024] | 24.90[0.980] |
| -030 | 33.00 [1.299] | 28.20 [1.110] | 23.20 [.913] | 23.200 [.9134] | 30.0 [1.181] | 28.90[1.138] |
| -035 | 37.00 [1.457] | 32.20 [1.268] | 27.20 [1.071] | 27.200 [1.0709] | 34.0 [1.339] | 32.90 [1.295] |
| -040 | 41.00 [1.614] | 36.20 [1.425] | 31.20 [1.228] | 31.200 [1.2283] | 38.0 [1.496] | 36.90[1.453] |
| -049 | 48.20 [1.898] | 43.40 [1.709] | 38.40 [1.512] | 38.400 [1.5118] | 45.2 [1.780] | 44.10[1.736] |
| -050 | 49.00 [1.929] | 44.20 [1.740] | 39.20 [1.543] | 39.200 [1.5433] | 46.0 [1.811] | 44.90[1.768] |
| -060 | 57.00 [2.244] | 52.20 [2.055] | 47.20 [1.858] | 47.200 [1.8583] | 54.0 [2.126] | 52.90[2.083] |
| -070 | 65.00 [2.559] | 60.20 [2.370] | 55.20 [2.173] | 55.200 [2.1732] | 62.0 [2.441] | 60.90[2.398] |
| -075 | 69.00 [2.717] | 64.20 [2.528] | 59.20 [2.331] | 59.200 [2.3307] | 66.0 [2.598] | 64.90[2.555] |
| ** -100 | 89.00 [3.504] | 84.20 [3.315] | 79.20 [3.118] | 79.200 [3.1181] | 86.0 [3.386] | 84.90[3.343] |



3° MAX SWAY (TYP)



T-1M47-XX-X IN-PROCESS VIEW

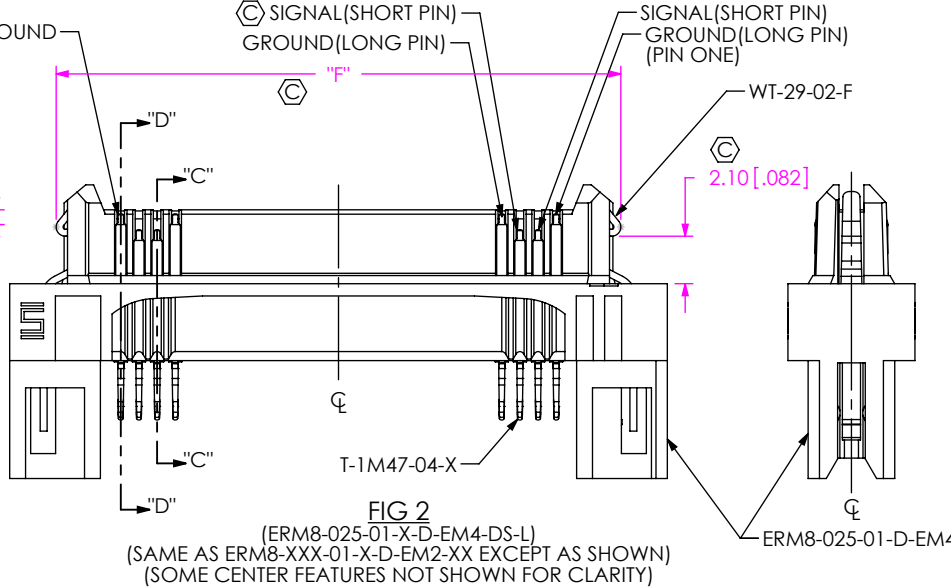
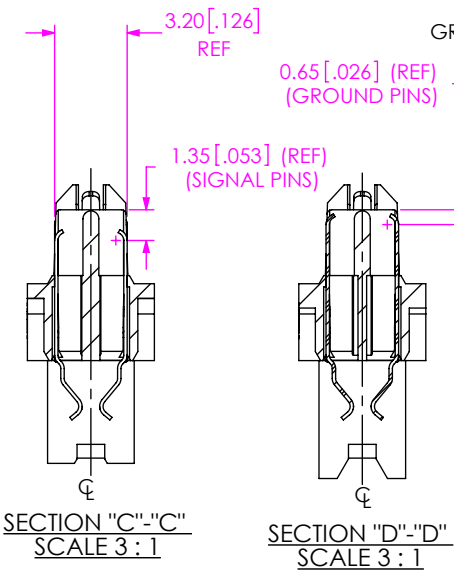


FIG 2
(ERM8-025-01-X-D-EM4-DS-L)
(SAME AS ERM8-XXX-01-X-D-EM2-XX EXCEPT AS SHOWN)
(SOME CENTER FEATURES NOT SHOWN FOR CLARITY)

| TABLE 4 | |
|-----------------------|--------------|
| PCB SPACING | ERM8-EM ASSY |
| | "K" |
| ERF8-XXX-05.0-X-DV-XX | 8.81 [.347] |
| ERF8-XXX-07.0-X-DV-XX | 10.76 [.424] |

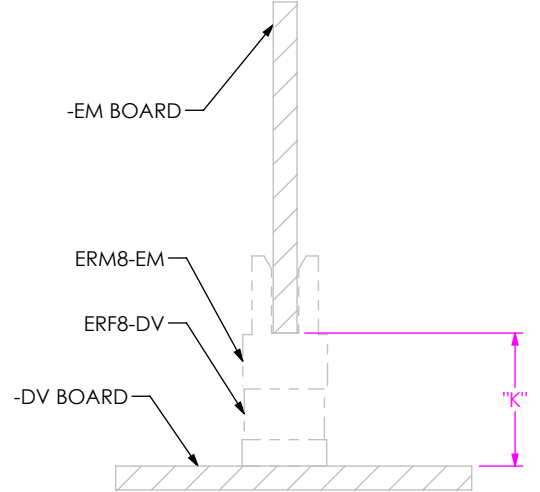


FIG 3
(ERM8-EM TO ERF8-DV)
(SHOWING CIRCUIT BOARD SEPARATION)

PROPRIETARY NOTE
THIS DOCUMENT CONTAINS CONFIDENTIAL AND PROPRIETARY INFORMATION AND ALL DESIGN, MANUFACTURING, REPRODUCTION, USE, PATENT RIGHTS AND SALES RIGHTS ARE EXPRESSLY RESERVED BY SAMTEC, INC. THIS DOCUMENT SHALL NOT BE DISCLOSED, IN WHOLE OR PART, TO ANY UNAUTHORIZED PERSON OR ENTITY NOR REPRODUCED, TRANSFERRED OR INCORPORATED IN ANY OTHER PROJECT IN ANY MANNER WITHOUT THE EXPRESS WRITTEN CONSENT OF SAMTEC, INC.



520 PARK EAST BLVD, NEW ALBANY, IN 47150
PHONE: 812-944-6733 FAX: 812-948-5047
e-Mail: info@SAMTEC.com code: 55322

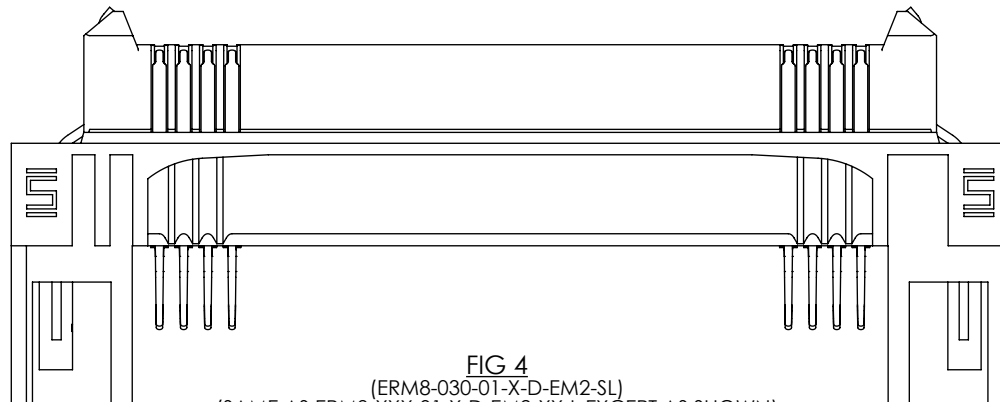
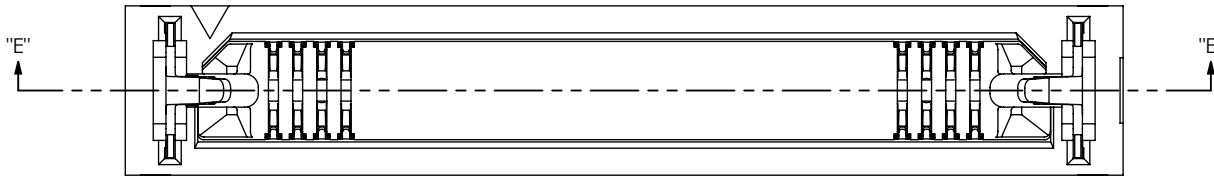
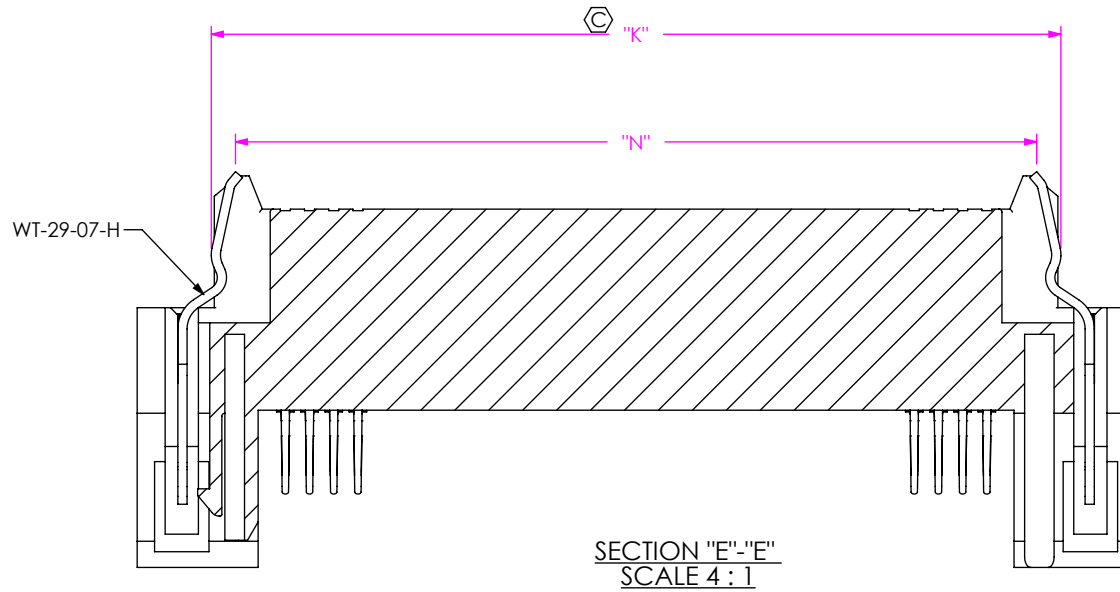
DO NOT SCALE DRAWING

SHEET SCALE: 2:1

DESCRIPTION:
0.8MM EDGE RATE TERMINAL ASSEMBLY

DWG. NO.
ERM8-XXX-01-X-D-EMX-XXXX-XX

BY: C. PIERCE 10/23/2006 SHEET 2 OF 4



F:\DWG\MISC\MKTG\ERM8-XXX-01-X-D-EMX-XXXX-XX-MKT.SLDDRW

| TABLE 6 | | | | |
|----------|-------|---------|-------|---------|
| POSITION | "N" | | "K" | |
| -005 | 6.50 | [0.256] | 8.10 | [0.319] |
| -010 | 10.50 | [0.413] | 12.10 | [0.476] |
| -011 | 11.30 | [0.445] | 12.90 | [0.508] |
| -013 | 12.90 | [0.508] | 14.50 | [0.571] |
| -020 | 18.50 | [0.728] | 20.10 | [0.791] |
| -025 | 22.50 | [0.886] | 24.10 | [0.949] |
| -030 | 26.50 | [1.043] | 28.10 | [1.106] |
| -035 | 30.50 | [1.201] | 32.10 | [1.264] |
| -040 | 34.50 | [1.358] | 36.10 | [1.421] |
| -049 | 41.70 | [1.642] | 43.30 | [1.705] |
| -050 | 42.50 | [1.673] | 44.10 | [1.736] |
| -060 | 50.50 | [1.988] | 52.10 | [2.051] |
| -070 | 58.50 | [2.303] | 60.10 | [2.366] |
| -075 | 62.50 | [2.461] | 64.10 | [2.524] |
| **100 | 82.50 | [3.248] | 84.10 | [3.311] |

PROPRIETARY NOTE

THIS DOCUMENT CONTAINS CONFIDENTIAL AND PROPRIETARY INFORMATION AND ALL DESIGN, MANUFACTURING, REPRODUCTION, USE, PATENT RIGHTS AND SALES RIGHTS ARE EXPRESSLY RESERVED BY SAMTEC, INC. THIS DOCUMENT SHALL NOT BE DISCLOSED, IN WHOLE OR PART, TO ANY UNAUTHORIZED PERSON OR ENTITY NOR REPRODUCED, TRANSFERRED OR INCORPORATED IN ANY OTHER PROJECT IN ANY MANNER WITHOUT THE EXPRESS WRITTEN CONSENT OF SAMTEC, INC.

DO NOT SCALE DRAWING

SHEET SCALE: 2:1



520 PARK EAST BLVD, NEW ALBANY, IN 47150
PHONE: 812-944-6733 FAX: 812-948-5047
e-Mail: info@SAMTEC.com code: 55322

DESCRIPTION:
0.8MM EDGE RATE TERMINAL ASSEMBLY

DWG. NO.
ERM8-XXX-01-X-D-EMX-XXXX-XX

BY: C. PIERCE 10/23/2006 SHEET 3 OF 4

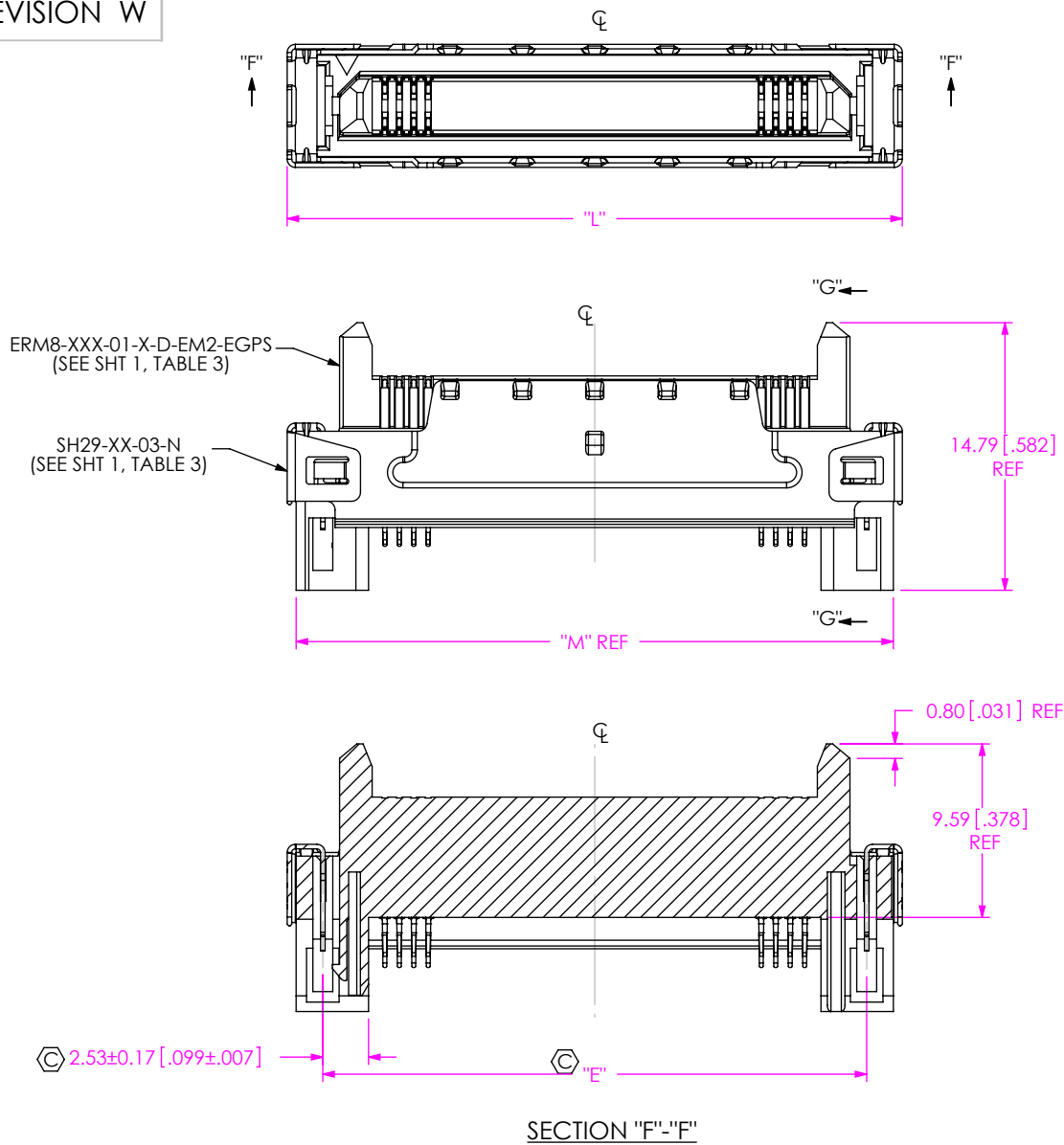


TABLE 9

| No. OF POS. | "L" | "M" |
|-------------|-------------|---------------|
| -10 | 18.0 [0.71] | 17.00 [0.669] |
| -20 | 26.0 [1.02] | 25.00 [0.984] |
| -25 | 30.0 [1.18] | 29.00 [1.142] |
| -30 | 34.0 [1.34] | 33.00 [1.299] |

FIG 5
(ERM8-030-01-X-D-EM2-EGPS)
(SAME AS ERM8-030-01-X-D-EM2 EXCEPT AS SHOWN)
(SOME CENTER FEATURES NOT SHOWN FOR CLARITY)

PROPRIETARY NOTE
THIS DOCUMENT CONTAINS CONFIDENTIAL AND PROPRIETARY INFORMATION AND ALL DESIGN, MANUFACTURING, REPRODUCTION, USE, PATENT RIGHTS AND SALES RIGHTS ARE EXPRESSLY RESERVED BY SAMTEC, INC. THIS DOCUMENT SHALL NOT BE DISCLOSED, IN WHOLE OR PART, TO ANY UNAUTHORIZED PERSON OR ENTITY NOR REPRODUCED, TRANSFERRED OR INCORPORATED IN ANY OTHER PROJECT IN ANY MANNER WITHOUT THE EXPRESS WRITTEN CONSENT OF SAMTEC, INC.

DO NOT SCALE DRAWING

SHEET SCALE: 5:2

samtec

520 PARK EAST BLVD. NEW ALBANY, IN 47150
PHONE: 812-944-6733 FAX: 812-948-5047
e-Mail: info@SAMTEC.com code: 55322

DESCRIPTION:
0.8MM EDGE RATE TERMINAL ASSEMBLY

DWG. NO.
ERM8-XXX-01-X-D-EMX-XXXX-XX

BY: C. PIERCE 10/23/2006 SHEET 4 OF 4