

PRODUCT NUMBER  
91615-XXXXW/LF

ROHS COMPATIBLE. SEE NOTE 7

OPTIONAL LETTER SEE SHEET 2  
N: PRODUCT WITH TYPE MARKING ON CONNECTOR

OPTIONAL LETTER

A: PRODUCT WITH PICK UP CAP PACKED IN TAPE & REEL SEE TA856.

B: PRODUCT WITH PICK UP CAP PACKED IN TUBE.

NUMBER OF POSITIONS PER ROW: 03 UP TO 30.  
MORE THAN 30 POSITIONS ON SPECIAL REQUEST.

PLATING CODE

3 = 0.76µm GOLD ON CONTACT AREA.

2µm MIN MATTE TIN ON TAIL.

4 = 2µm MIN MATTE TIN FULL PLATED

1.27µm Ni MINUNDERPLATING

NOTES:

- 1 - HOUSING MAT'L: THERMOPLASTIC GLASS FILLED FLAME RETARDANT PER UL 94 V-0 COLOR: GREY.
- 2 - TERMINAL MATERIAL: PHOSPHOR BRONZE.
- 3 - PACKAGING:  
3 UP TO 4 POSITIONS PRODUCT PACKED IN PLASTIC BOX.  
5 UP TO 30 POSITIONS PRODUCT PACKED IN TUBE.  
WHOLE 91615-303B PRODUCT PACKED IN TUBE.
- 4 - TO DETERMINE DIMENSIONS:  
N = NUMBER OF POSITIONS PER ROW  
EXAMPLE: 8 POS: ((N+2)x2.54)-0.08=25.32 mm.
- 5 - RECOMMENDED IR PROFILE PER TA842.
- 6 - Ø2.65 MINI FOR PICK & PLACE ASSEMBLY(=0 INSERTION FORCE).
- 7 - ROHS COMPATIBLE PRODUCT SPECIFICATIONS

d - PLATING:

- "LF" MEANS THE PRODUCT IS LEAD-FREE,  
2µm MINIMUM MATTE TIN OVER 1.27µm  
MINIMUM NICKEL UNDERPLATE.

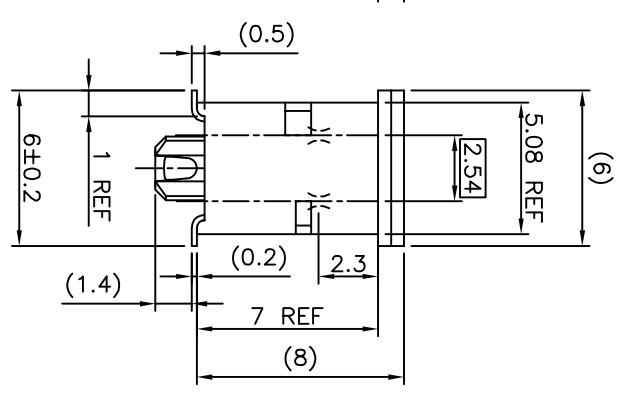
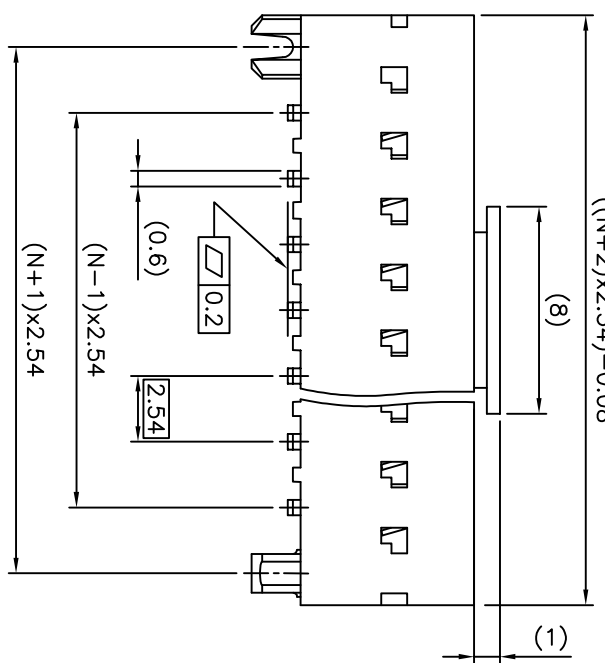
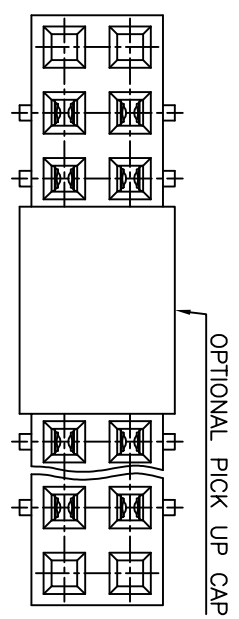
b - MANUFACTURING PROCESS COMPATIBILITY

- THE HOUSING WILL WITHSTAND EXPOSURE TO  
260°C PEAK TEMPERATURE FOR 30 SECONDS  
MAX IN A CONVECTION, INFRA-RED OR VAPOR  
PHASE OR REFLOW OVEN.

c - LABELING:

- MEETS PACKAGING SPECS AS PER GS-14-920

d - LEGAL STATEMENT: SEE GS-47-0004



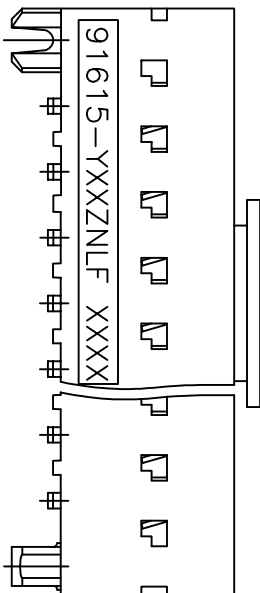
mat'l. code		surface		tolerance		projection		product family	
SEE NOTES		ISO 1302	ISO 406	ISO 1001	mm		DUBOX		
ltr	ecn no	dr	date	tolerances unless otherwise specified	40.3	projection		title	
AB	F04-0347	DLE	04.11.10			scale 5:1		BtB RECEPT.	
AC	F06-0137	DLE	06.02.27					VERT DR SMT	
AD	F06-0204	DLE	06.06.23	#2				91615	
AE	F07-0169	DLE	07.03.30	dr	P	NIZZI	95.11.17	sheet 1 of 3	
AF	B-19123	LMU	14.10.21	engf	P,NZ	P,NZ	01.07.23	size	
				chr	JF,N	JF,N	01.07.23	A3	
sheet	revision	AE	D	B	FCI				
index	sheet	1	2	3	type CUSTOMER Drawing				

PRODUCT NUMBER  
91615-YXXZNLF

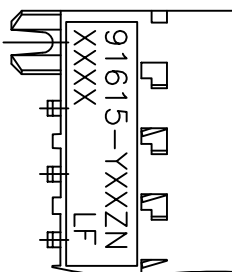
ROHS COMPATIBLE, SEE NOTE 7

APPLICATION SPECIFIC

PRINTING METHOD FOR 91615-Y07 UP TO -Y50  
MARKING: PART NUMBER AND DATE CODE

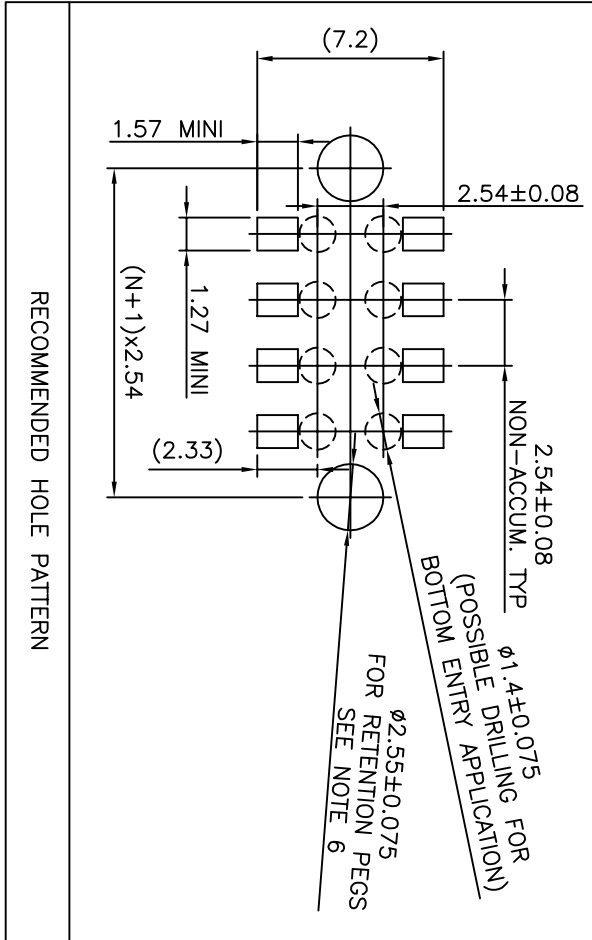


PRINTING METHOD FOR 91615-Y03 UP TO -Y07



91615-YXXZNLF XXXX  
YEAR CODE  
WEEK CODE  
FOR OTHER OPTION  
LETTERS SEE SHEET 1  
NUMBER OF POS.  
PLATING CODE

mat'l. code		surface		tolerance		projection		product family	
ltr	ecn no	dr	date	ISO 1302	ISO 406	ISO 1101	ISO 1101	title	DUBOX
A	F10379	DLE	01.07.23	tolerances unless otherwise specified	±0.3	mm	mm	BtB RECEPT.	
B	F04-0347	DLE	04.11.10	linear				VERT DR SMT	
C	F06-0137	DLE	06.02.27	±#			scaleN/A		
D	F06-0204	DLE	06.06.23	dr	DLE	01.07.23		dwg no	91615
E	B-19123	LMU	14.10.21	lengr	P.NZ	01.07.23		sheet 2 of -	A3
				chr	P.NZ	01.07.23		size	
				appd	JF.N	01.07.23		Drwing	
sheet	revision								
index	sheet								



mat'l. code		surface		tolerance		projection		product family	
ISO 1302		ISO 406 ISO 1101		mm		DUBOX		title	
A F04-034/DLE 04.11.10		tolerances unless otherwise specified		±0.3		FCI		BtB RECEPT.	
B F06-0204/DLE 06.06.23		linear		scale N/A		dwg no		VERT DR SMT	
dr		DLE		04.11.10		type		CUSTOMER	
engr		PNZ		04.11.10		sheet 3 of -		size	
chr		PNZ		04.11.10		A3		Drawing	
appd		P NZ		04.11.10		sheet		revision	
sheet		index		sheet		sheet		sheet	