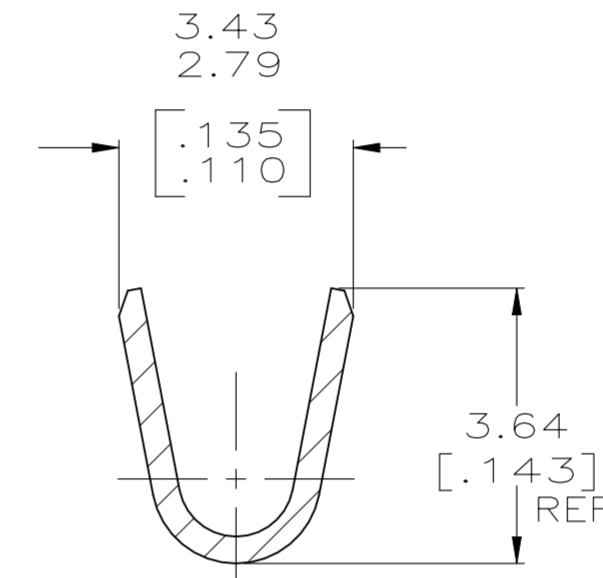
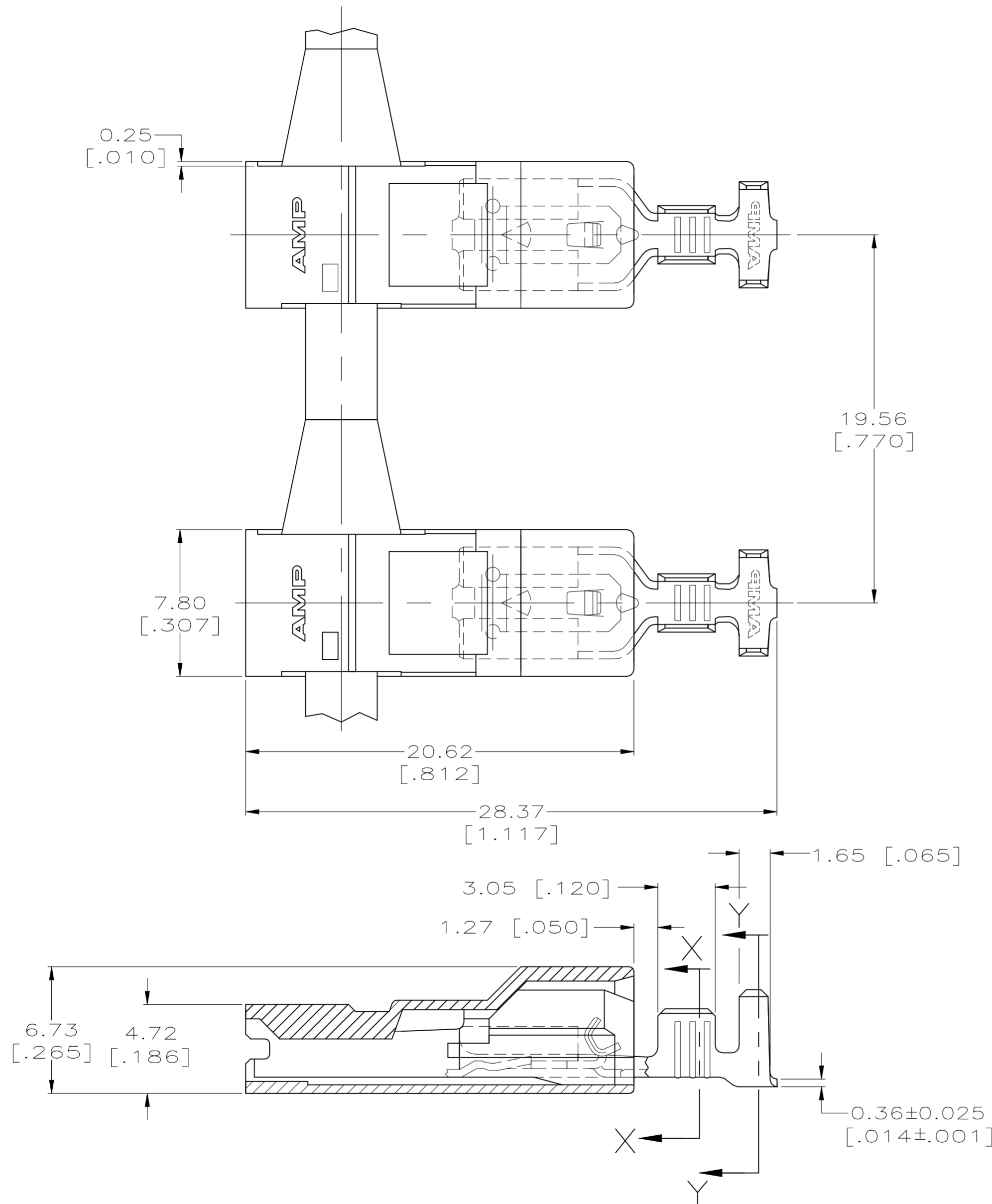
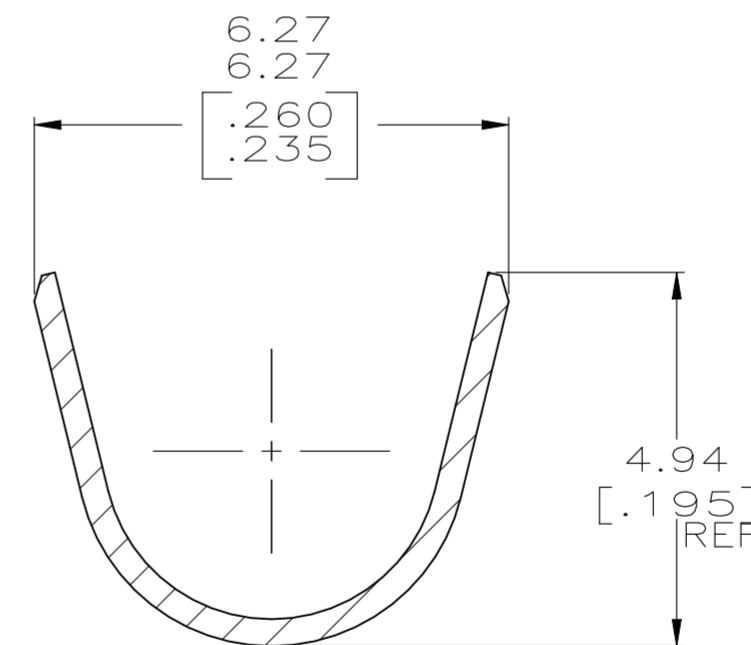


REVISIONS					
P	LTR	DESCRIPTION	DATE	DWN	APVD
F2		REVISED PER ECR-22-160893	14DEC2022	DB	BW

- 1 MATING TAB THK TO BE  $0.51 \pm 0.025$   $[\.020 \pm .001]$ .
- 2 WIRE SIZE IS  $[\#18-\#14]$  AWG.
- 3 INSULATION RANGE IS 2.79-4.57  $[\.110-.180]$  DIA.  
 2.79-3.56  $[\.110-.140]$  DIA - CRIMP WIDTH 4.57  $[\.180]$ , F TYPE  
 3.56-4.57  $[\.140-.180]$  DIA - CRIMP WIDTH 4.57  $[\.180]$ , O TYPE



SECTION X-X  
SCALE 10:1



SECTION Y-Y  
SCALE 10:1

6/6 VO NYLON, NATURAL	521212-2
SUPERSEDED BY 521212-2 4/6 V2 NYLON (150° C) BLACK	521212-1
MATERIAL	PART NO.

THIS DRAWING IS A CONTROLLED DOCUMENT.		DWN	JR RUTH	01APR99		TE Connectivity							
DIMENSIONS: mm [INCHES]		CHK	MS FEHER	01APR99		NAME							
TOLERANCES UNLESS OTHERWISE SPECIFIED:		APVD	J HUMMEL	01APR99		PRODUCT SPEC							
0 PLC ± - 1 PLC ± - 2 PLC ± 0.25 $[\.010]$ 3 PLC ± - 4 PLC ± - ANGLES ± -		APPLICATION SPEC		ASSEMBLY, RECEPT, POSI-LOCK, ULTRA-POD, 4.75 $[\.187]$ SERIES									
MATERIAL	TERMINAL - BRASS HOUSING - SEE TABLE	FINISH	TERMINAL - TIN HOUSING - SEE TABLE	WEIGHT	0.000000	SIZE	A2	CAGE CODE	00779	DRAWING NO	C=521212	RESTRICTED TO	-
CUSTOMER DRAWING				SCALE	5:1	SHEET	1 of 1	REV	F2				