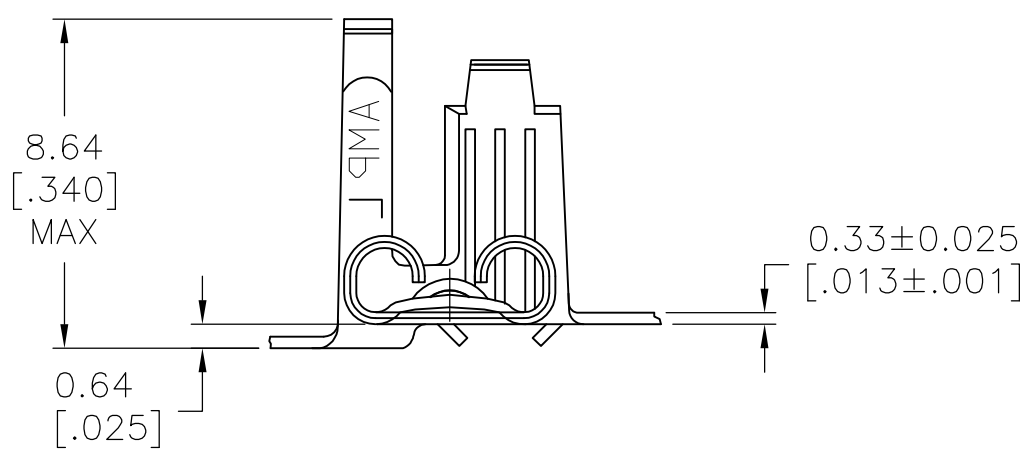
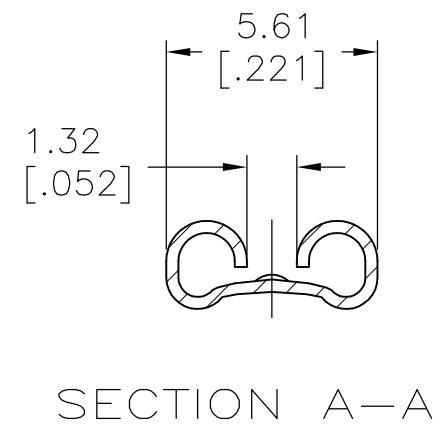
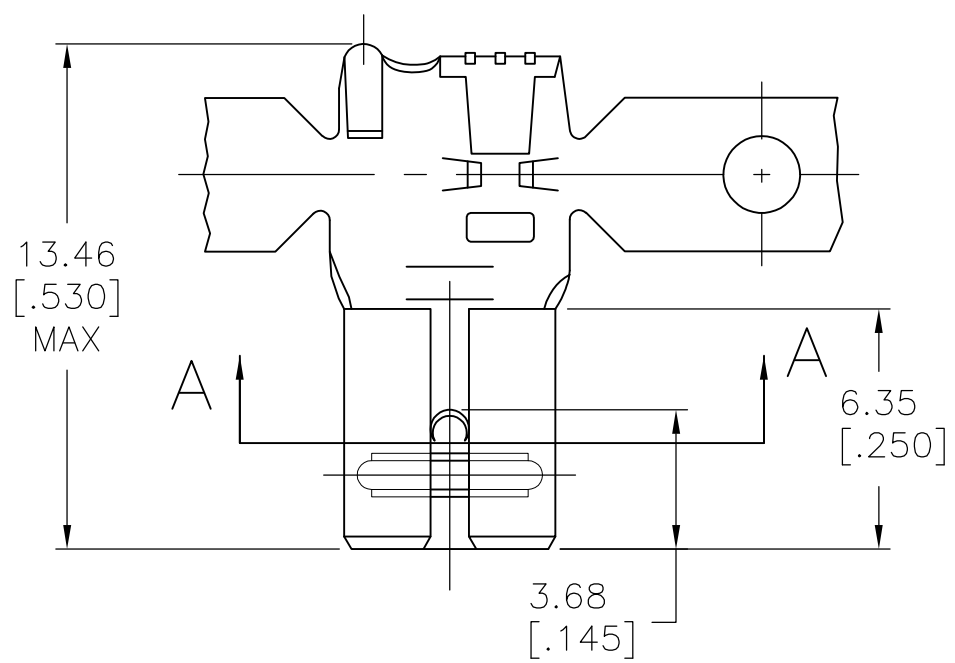


THIS DRAWING IS UNPUBLISHED. RELEASED FOR PUBLICATION
 © COPYRIGHT - By - ALL RIGHTS RESERVED.

LOC	DIST	REVISIONS			
P	LTR	DESCRIPTION	DATE	DWN	APVD
	G	REVISED PER ECR-12-013518	23NOV2012	KH	PD

1. CONTINUOUS STRIP ON REELS.
2. ACCEPTS [#20-#16] AWG. WIRE SIZE
3. INSULATION RANGE TO BE 2.79-4.32 [.110-.170] DIA
4. FEED IS 16.51±0.076[.650±.003]



TIN	0.51±0.025 [.020±.001]	63476-2
-		63476-1
FINISH	MATING TAB THICKNESS	PART NO

THIS DRAWING IS A CONTROLLED DOCUMENT.		DWN JR RUTH 10/23/87	TE Connectivity RECEPTACLE, LIF, FASTON, FLAG, 4.75 [.187] SERIES											
DIMENSIONS: mm [INCHES]		CHK G YETTER 10/23/87												
TOLERANCES UNLESS OTHERWISE SPECIFIED:		APVD R KUZO 10/23/87												
<table border="0"> <tr><td>0 PLC</td><td>± -</td></tr> <tr><td>1 PLC</td><td>± -</td></tr> <tr><td>2 PLC</td><td>± 0.25 [.010]</td></tr> <tr><td>3 PLC</td><td>± -</td></tr> <tr><td>4 PLC</td><td>± -</td></tr> <tr><td>ANGLES</td><td>± -</td></tr> </table>		0 PLC				± -	1 PLC	± -	2 PLC	± 0.25 [.010]	3 PLC	± -	4 PLC	± -
0 PLC	± -													
1 PLC	± -													
2 PLC	± 0.25 [.010]													
3 PLC	± -													
4 PLC	± -													
ANGLES	± -													
MATERIAL BRASS	FINISH SEE TABLE	APPLICATION SPEC -	NAME	SIZE A3	CAGE CODE 00779	DRAWING NO C-63476	RESTRICTED TO -							
CUSTOMER DRAWING			WEIGHT -	SCALE 5:1	SHEET 1 OF 1	REV G								