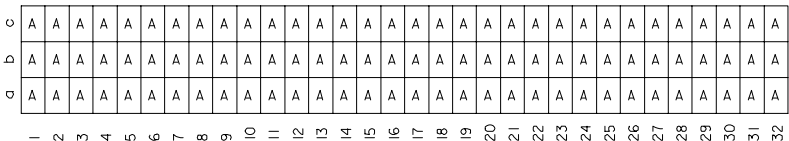


20 19 18 17 16 15 14 13 12 11 9 8 7 6 5 4 3 2 1

VIEW ON MATING SIDE



A = 96 STANDARD CONTACTS L = 13.3

MARKING	STANDARD
PERFORMANCE LEVEL	G2/0 = CONTACT AREA LEVEL2 / TERMINATION TIN
FLUX PROOF	NO
FIXING CLIP	NO
DIMENSIONS	SD-85013-0001 SHT 1

A	G2/0	a1-32 b1-32 c1-32
CONTACT SYMBOL	PERFORMANCE LEVEL	CONTACT POSITION NUMBER

EC NO. I 2004-XXXX DRAWN L.S. 31/03/04 CHK'd G.L. 31/03/04 APPR'd L.S. 31/03/04	QUALITY SYMBOLS MAJOR $\blacktriangledown$ CRITICAL $\nabla$	GENERAL TOLERANCES (UNLESS SPECIFIED): <table border="1"> <tr><th></th><th>MM</th><th>INCH</th></tr> <tr><td>4 PLACES</td><td><math>\pm 0.1</math></td><td><math>\pm</math></td></tr> <tr><td>3 PLACES</td><td><math>\pm 0.1</math></td><td><math>\pm</math></td></tr> <tr><td>2 PLACES</td><td><math>\pm 0.1</math></td><td><math>\pm</math></td></tr> <tr><td>1 PLACE</td><td><math>\pm 0.1</math></td><td><math>\pm</math></td></tr> <tr><td>ANGULAR</td><td><math>\pm</math></td><td>*</td></tr> </table>			MM	INCH	4 PLACES	$\pm 0.1$	$\pm$	3 PLACES	$\pm 0.1$	$\pm$	2 PLACES	$\pm 0.1$	$\pm$	1 PLACE	$\pm 0.1$	$\pm$	ANGULAR	$\pm$	*	SCALE <input checked="" type="checkbox"/> MM <input type="checkbox"/> INCH	DESIGN UNITS <input checked="" type="checkbox"/> MM <input type="checkbox"/> INCH	DIMENSIONS: <input type="checkbox"/> MM <input type="checkbox"/> INCH <input checked="" type="checkbox"/> MM ONLY	SHT   REV REVISE ON CAD ONLY
			MM	INCH																					
		4 PLACES	$\pm 0.1$	$\pm$																					
		3 PLACES	$\pm 0.1$	$\pm$																					
		2 PLACES	$\pm 0.1$	$\pm$																					
1 PLACE	$\pm 0.1$	$\pm$																							
ANGULAR	$\pm$	*																							
DRAWN BY & DATE S.S. 16/07/01			THIRD ANGLE PROJECTION <input checked="" type="checkbox"/> FIRST ANGLE PROJECTION <input type="checkbox"/>																						
CHECKED BY & DATE G.L. 16/07/01			TITLE: 96 POS MALE CONNECTOR ACCORDING DIN 41612 STYLE R CONTACTS ARRANGEMENT																						
APPROVED BY & DATE G.L. 16/07/01			MOLEX INCORPORATED																						
CAD FILENAME S850130024.S01		MATERIAL NO. 85013-0024	DRAWING NO. SD-85013-0024	SHEET NO. 1 OF 1																					

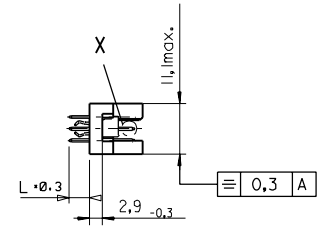
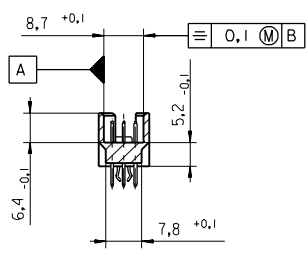
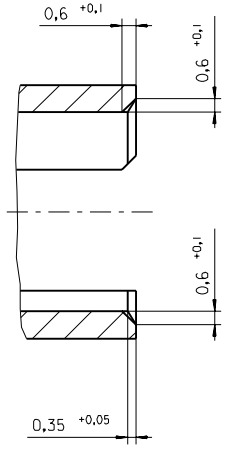
THIS DRAWING CONTAINS INFORMATION THAT IS PROPRIETARY TO MOLEX INCORPORATED AND SHOULD NOT BE USED WITHOUT WRITTEN PERMISSION.

DRAFT WHERE APPLICABLE MUST REMAIN WITHIN DIMENSIONS

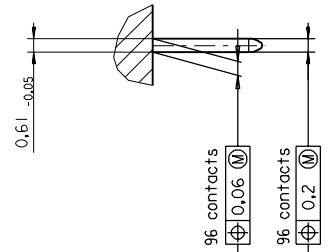
19 18 17 16 15 14 13 12 11 10 9 8 7 6 5 4 3 2 1

PART NO.  
DWG. NO.

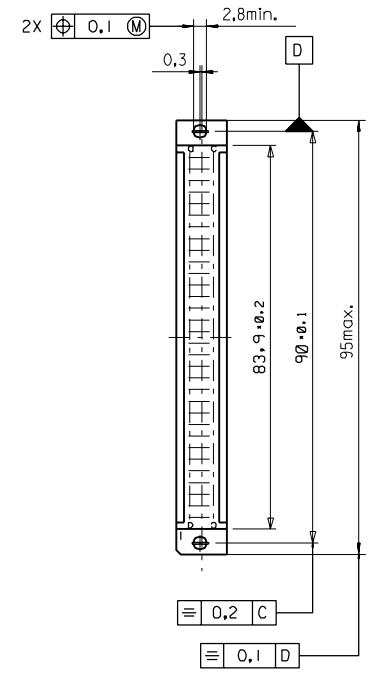
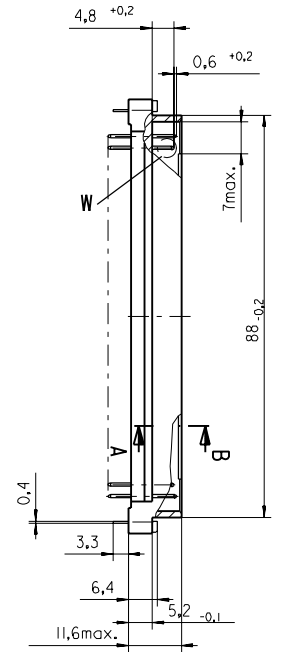
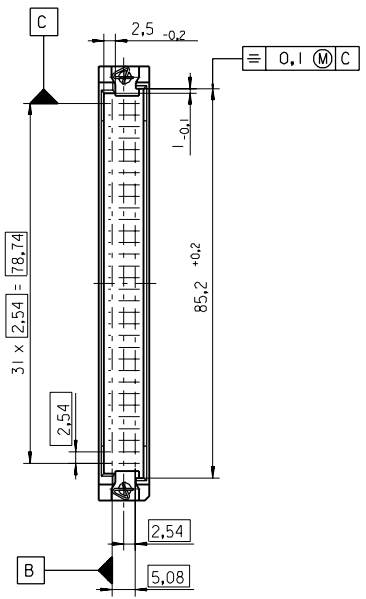
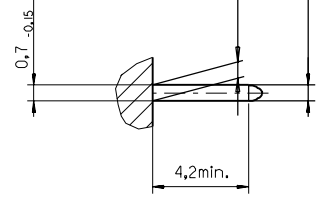
Section A - B  
5:1



View X  
5:1



View W  
5:1



FIRST ANGLE PROJECTION		REVISE ONLY ON CAD SYSTEM		SH.	REV.
UNLESS OTHERWISE SPECIFIED TOLERANCES: ANGULAR ±2°	INCH	DRWG BY	SIGN	CAD/CAM PROJECT NAME	
	METRIC	Ca		85013000	THIS DRAWING CONTAINS INFORMATION THAT IS PROPRIETARY TO MOLEX INC. & SHOULD NOT BE USED WITHOUT WRITTEN PERMISSION
3 PLACE ± . . ±		CHK'D BY	SIGN	TITLE	
2 PLACE ± . ±		KN		96 pos. Male connector acc. DIN 41612 Style R	
1 PLACE ± . ±		APP'D BY	SIGN	Dimensions	
DRAFT WHERE APPLICABLE MUST REMAIN WITHIN DIMENSIONS		SCALE		SHEET NO. DATE	
DESIGN DIMENSION <input checked="" type="checkbox"/> MM <input type="checkbox"/> IN.		: 1		1 OF 95/06/07	
EQUIVALENT DIMENSION <input type="checkbox"/> MM <input type="checkbox"/> IN.		SCALE		MOLEX MOLEX EUROPE	
IF TWO DIMENSIONS ARE SHOWN THE UPPER IS THE DESIGN DIMENSION, LOWER IS SECONDARY		SCALE		PART NO. DWG NO. SIZE	
				SDA-85013-0001 B	

View on mating side


0	A	A	A	A	A	A	A	A	A	A	A	A	A	A	A	A	A	A	A	A	A	A	A
1	A	A	A	A	A	A	A	A	A	A	A	A	A	A	A	A	A	A	A	A	A	A	A
2	A	A	A	A	A	A	A	A	A	A	A	A	A	A	A	A	A	A	A	A	A	A	A

3 4 5 6 7 8 9 10 11 12 13 14 15 16 17 18 19 20 21 22 23 24 25 26 27 28 29 30

A = 96 standard contacts L=13,3

Marking	Standard
Performance level	G2/0 = Contact area perform. level2 / Termination tin
Flux proof	no
Fixing clip	no
Dimensions	SDA-85013-0001 sht.1
Technical Data	PS-85013-0001

A	G2/0      b1-32    cl-32				
<table border="1"> <tr> <td>Contact symbol</td> <td>Perform. level</td> </tr> </table>	Contact symbol	Perform. level	<table border="1"> <tr> <td>Contact position number</td> <td></td> </tr> </table>	Contact position number	
Contact symbol	Perform. level				
Contact position number					

first release see ECN No. 1868	REVISIONS		FOR PREVIOUS REVISIONS SEE MRI LIST	
△	LTR			
	UNLESS OTHERWISE SPECIFIED TOLERANCES: ANGULAR ± 2°	DRWG BY	SIGN	REV.
3 PLACE ± °	INCH	C G	SIGN	SH.
2 PLACE ± °	METRIC		CHK'D BY	THIS DRAWING CONTAINS INFORMATION THAT IS PROPRIETARY TO MOLEX INC. & SHOULD NOT BE USED WITHOUT WRITTEN PERMISSION
1 PLACE ± °	DRAFT WHERE APPLICABLE MUST REMAIN WITHIN DIMENSIONS	APP'D BY	SIGN	DATE
DESIGN DIMENSION	<input type="checkbox"/> MM <input type="checkbox"/> IN.			
EQUIVALENT DIMENSION	<input type="checkbox"/> MM <input type="checkbox"/> IN.	SCALE		
IF TWO DIMENSIONS ARE SHOWN THE UPPER IS THE DESIGN DIMENSION, LOWER IS SECONDARY				SHEET NO.
			1 OF 1	95/06/07
		PART NO.	DWG NO.	SIZE
		85013-0024	SDA-85013-0024	A
				MOLEX EUROPE
TITLE				
96 pos. Male connector				
acc. DIN 41612 style R				
contacts arrangement				
REVISE ONLY ON CAD SYSTEM				