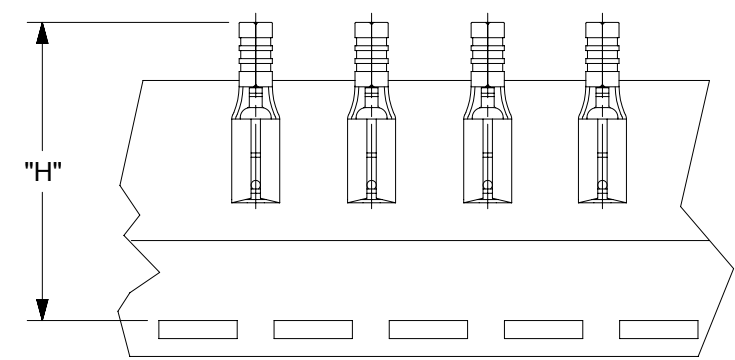
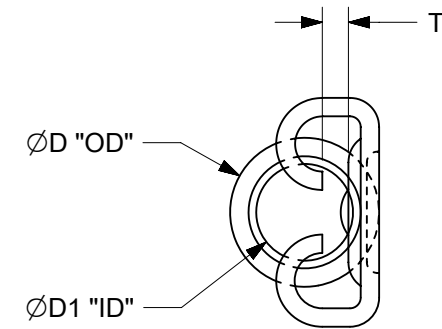
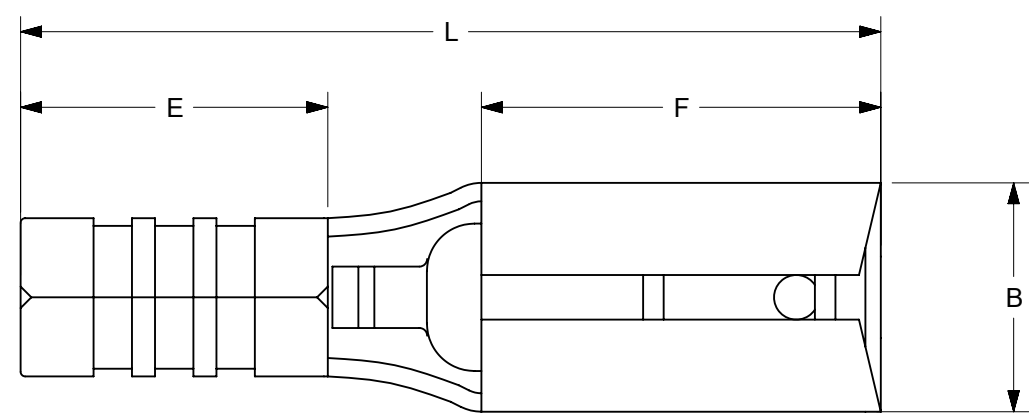


MATERIAL NUMBER	ENGINEERING NUMBER	WIRE RANGE AWG	TAPED MATERIAL NUMBER	TAPED ENGINEERING NUMBER	T MAX	B MAX	F MIN	L MAX	E MIN	D1 MIN	D MAX	H NOMINAL
192030373	192030373	16-14	192030467	19203-0467	.030/.75	.239/6.06	.252/6.40	.587/14.92	.173/4.40	.083/2.10	.138/3.50	1.184/30.07
192030390	192030390	16-14	192030469	19203-0469	.030/.75	.302/7.66	.307/7.80	.666/16.92	.173/4.40	.083/2.10	.138/3.50	1.184/30.07
192030379	192030379	12-10	192030468	19203-0468	.030/.75	.302/7.66	.307/7.80	.706/17.92	.213/5.40	.130/3.30	.185/4.70	1.235/31.37

(B1)



TAPE MOUNTING LOCATION

NOTES:

1. MATERIAL: STEEL .016/0.40 THICK REF.
2. FINISH: NICKEL PLATED WITH OPTIONAL COPPER FLASH UNDERPLATING, IS ALLOWED FOR IMPROVED ADHESION.
3. PART IS ROHS COMPLIANT.
4. AMBIENT OPERATING TEMPERATURE UP TO 900 °F (483 °C).

(B1)

FUNCTIONAL SYMBOLS FA = 0 FC = 0 FE = 0	THIS DRAWING CONTAINS INFORMATION THAT IS PROPRIETARY TO MOLEX ELECTRONIC TECHNOLOGIES, LLC AND SHOULD NOT BE USED WITHOUT WRITTEN PERMISSION		CURRENT REV DESC: REMASTERED IN ECTR AND UPDATED NOTE		<p>KRIMPTITE QUICK DISCONNECT, STEEL, 900 DEG F (483 DEG C)</p> <p>PRODUCT CUSTOMER DRAWING</p>			
	DIMENSION UNITS	SCALE	EC NO: 708789					
	IN/MM	1:1	DRWN: PAWANC	2022/05/12				
	GENERAL TOLERANCES (UNLESS SPECIFIED)		CHKD: DMYRICK	2022/06/01				
DIVISIONAL SYMBOLS	4 PLACES	±	MM	INCH	APPR: JMACNEIL	2022/06/02		
	3 PLACES	±			INITIAL REVISION:			
	2 PLACES	±			DRWN: ASAYDEH	05/12/02		
	1 PLACE	±			APPR: R DEROSH	05/12/02		
0 PLACES	±			ANGULAR TOL ± °		DOCUMENT NUMBER: SD-19203-025 DOC TYPE: PSD DOC PART: 001 REVISION: B1		
DRAFT WHERE APPLICABLE MUST REMAIN WITHIN DIMENSIONS		THIRD ANGLE PROJECTION		DRAWING	SERIES	MATERIAL NUMBER	CUSTOMER	SHEET NUMBER
				B-SIZE	19203	SEE CHART	GENERAL MARKET	1 OF 1

DOCUMENT STATUS	P1	RELEASE DATE	2022/06/02	15:20:38
-----------------	----	--------------	------------	----------