

F

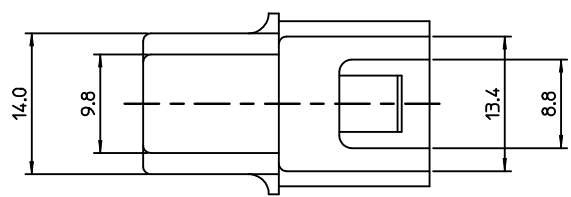
E

D

C

B

A

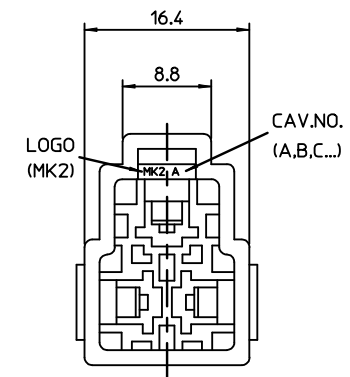
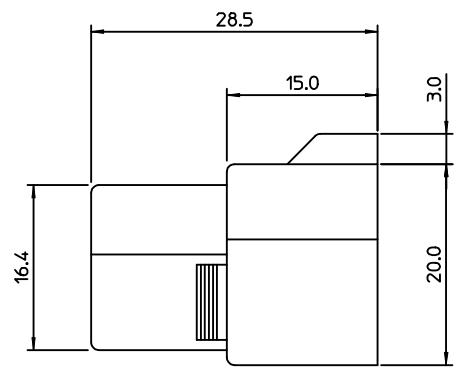
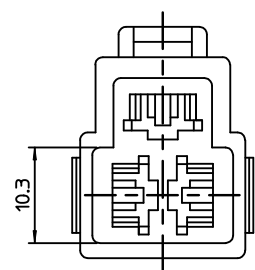


1. MATERIAL & TERMINAL

MATERIAL NO.	ENG NO.	MATERIAL	COLOR
359550310	35955-0310	PA66(UL94V-2)	NATURAL
359550330	35955-0330	PBT(UL94V-0)	NATURAL
APPLICABLE TERMINAL			
35725-18*0	35725-19*0	35725-30*0	

2. MATED HSG & APPLICABLE TERMINAL

MATERIAL NO.	ENG NO.	MATERIAL	COLOR
359550320	35955-0320	PA66(UL94V-2)	NATURAL
359550340	35955-0340	PBT(UL94V-0)	NATURAL
APPLICABLE TERMINAL			
35725-36*0	35725-37*0	35725-38*0	



REVISED EC NO: KOR2009-0054 DRWN: JHPARK01 2008/10/27 CHKD: WY YANG 2008/10/27 APPR: YUNSIKKIM 2008/10/27 REV DESCRIPTION	QUALITY SYMBOLS ▽=0 ◻=0	GENERAL TOLERANCES (UNLESS SPECIFIED) mm INCH 4 PLACES ± --- ± --- 3 PLACES ± --- ± --- 2 PLACES ± 0.30 ± --- 1 PLACE ± 0.30 ± --- ANGULAR ± 1 °	DIMENSION STYLE MM ONLY DRAWN BY DATE JS. KANG 1999/08/16 CHECKED BY DATE BK. CHOI 1999/08/16 APPROVED BY DATE CW. LEE 1999/08/16	SCALE 3:1 DESIGN UNITS METRIC THIRD ANGLE PROJECTION	TITLE .250 RECEPTACLE HSG-3P
	DRAFT WHERE APPLICABLE MUST REMAIN WITHIN DIMENSIONS	MATERIAL NO. SEE TABLE	MOLEX INCORPORATED DOCUMENT NO. SD-35955-0310	SHEET NO. 1 OF 01	
	THIS DRAWING CONTAINS INFORMATION THAT IS PROPRIETARY TO MOLEX INCORPORATED AND SHOULD NOT BE USED WITHOUT WRITTEN PERMISSION				
	SIZE A3				