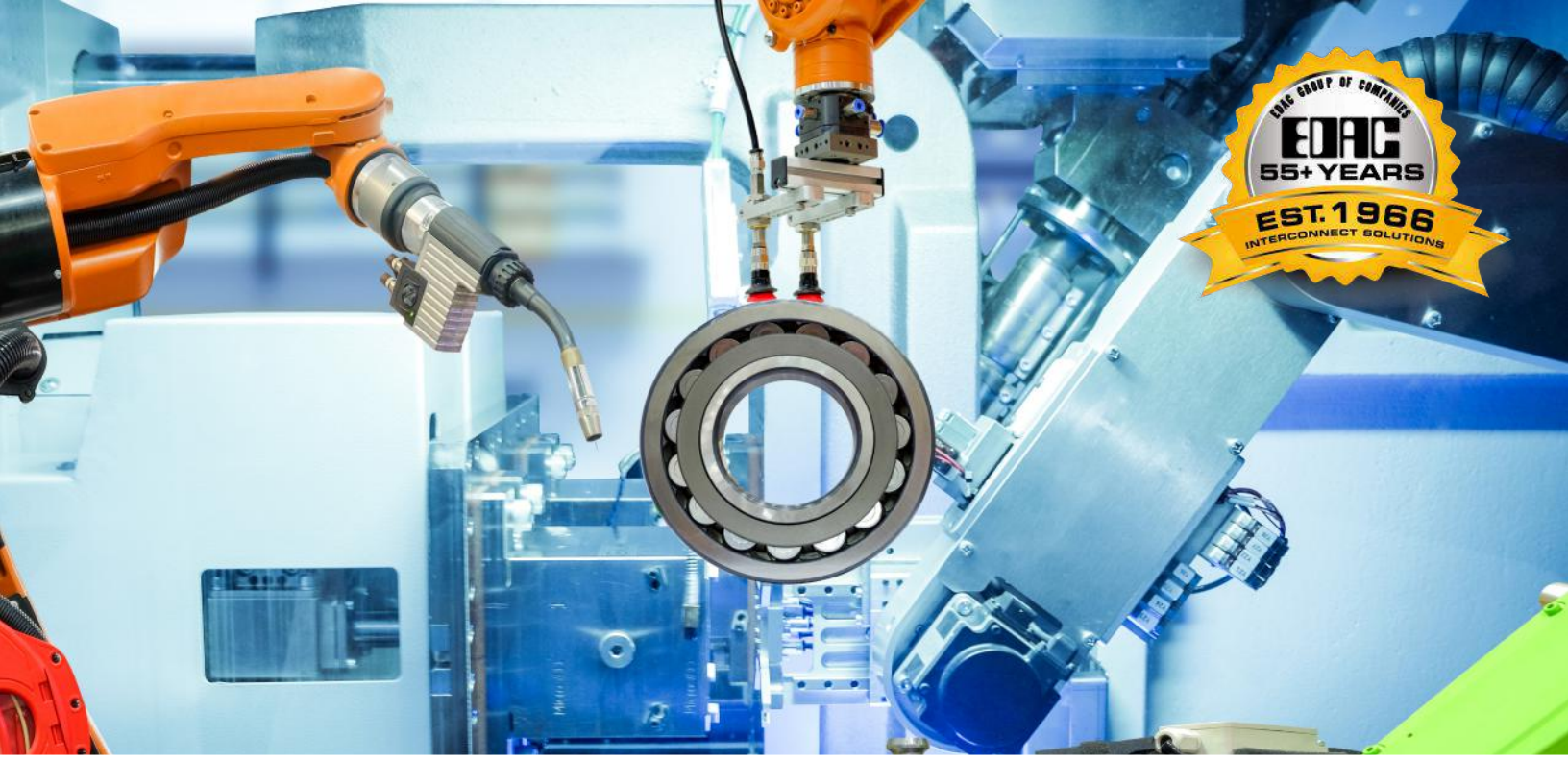




INTERCONNECT SOLUTIONS FOR A CONNECTED WORLD

EDAC



Card Edge Connectors

One of EDAC's original product families, the Cardedge+ family of card edge connectors has grown to become one of the largest offerings available in the market. Available in a number of contact spacings, with multiple options for contact terminations, plating thicknesses and mounting styles, providing our customers more flexibility with their designs.

Features

- Card Edge connectors available in excess of 350,000 standard parts, and capabilities to produce custom variations
- Contact spacings of 0.050", 0.100", 0.125", 0.150", 0.156" and 0.200"
- Selective gold plating on contact mating area or gold all over with nickel under plating
- PCB thru-hole, wirewrap, solder eyelet, extender board tail, and other specialized contact options
- From 2 to 188 contacts in single, bridged, and dual rows with or without card supports



www.edac.net



EDAC

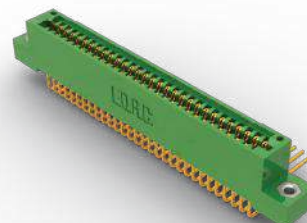
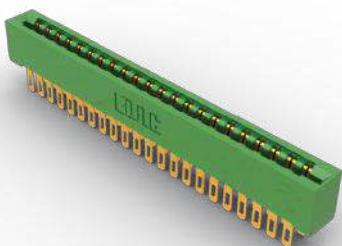


Card Edge Connectors

Series	Contact Pitch	Row Spacing	No. Of Contacts	High Temp. Insulator	Contact Options	Mounting Options	Polaization
243	0.200" (5.08 mm)	0.200" (5.08 mm)	02 to 06	No	1	1	Yes
305/315/355	0.156" (3.96mm)	0.140" (3.56 mm)	12 to 86	Yes	5	10	Yes
306/316/356	0.200" (5.08 mm)	Single Row	06 to 43	Yes	3	10	Yes
307/357	0.156" (3.96mm)	0.200" (5.08 mm)	6 to 88	Yes	25	10	Yes
310	0.156" (3.96mm)	0.200" (5.08 mm)	30 or 60	Yes	18	6	Yes
317	0.156" (3.96mm)	0.200" (5.08 mm)	06 to 86	Yes	5	7	Yes
322	0.156" (3.96mm)	0.300" (7.62 mm)	22 or 44	Yes	25	3	Yes
325	0.100" (2.54mm)	0.300" (7.62 mm)	05 to 122	Yes	3	4	Yes
333	0.156" (3.96mm)	0.200" (5.08 mm)	06 to 86	Yes	14	7	Yes
337/387	0.156" (3.96mm)	0.200" (5.08 mm)	06 to 86	Yes	14	10	Yes
338	0.156" (3.96mm)	0.200" (5.08 mm)	10 to 56	Yes	1	9	Yes
341/391	0.100" (2.54mm)	0.140" (3.56 mm)	05-120	Yes	8	6	Yes
342/392	0.100" (2.54mm)	0.200" (5.08 mm)	05 to 116	Yes	14	7	Yes
345/395	0.100" (2.54mm)	0.200" (5.08 mm)	05 to 144	Yes	15	10	Yes
346/396	0.125" (2.50mm)	0.250" (6.35 mm)	05 to 100	Yes	12	10	Yes
368	0.156" (3.96mm)	0.200" (5.08 mm)	04 to 06	Yes	2	1	Yes
379	0.150" (3.81mm)	0.200" (5.08 mm)	06 to 64	Yes	11	6	Yes
395AT	0.100" (2.54mm)	0.200" (5.08 mm)	98	Yes	13	1	Yes

Rugged Board to Board Connections

High Reliability Backplane Interconnect Solutions



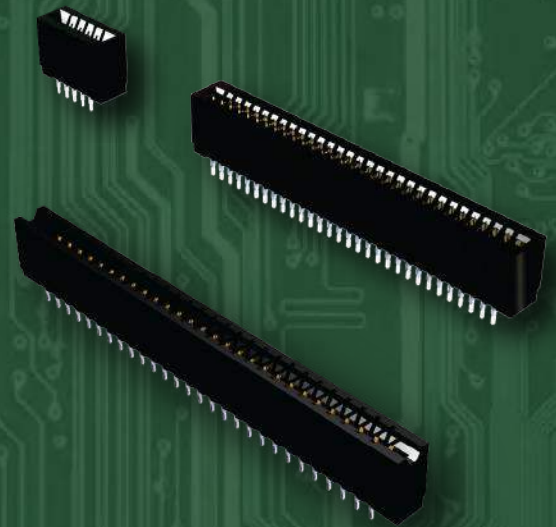


Pressfit Card Edge Connectors

EDAC offers a very broad range of press-fit card edge connectors. Our Edgefit product utilizes a contact design that allows for ease of assembly into the PCB with the use of simple flat rock tooling. Once installed, this solder-less connection provides superior shock and vibration resistance while also providing significant labor savings.

Features

- 0.100" (2.54mm) to 0.156" (3.96mm) contact spacing Single or dual row up to 150 contacts
- Press fit compliant section for gas tight connection and solder-less operations
- Accepts between and in contact polarizing keys
- Low profile or high profile body available
- Contact termination options include PC tail or wire wrap Tools available for installation, contact removal, flat rock press to board



www.edac.net



EDAC

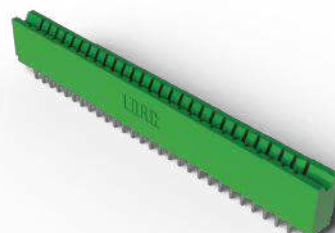
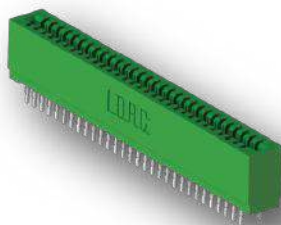
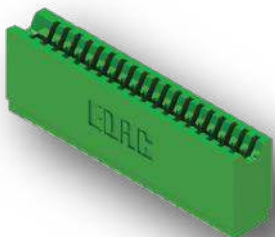


Pressfit Card Edge Connectors

Series	Contact Pitch	Row Spacing	No. Of Contacts	High Temp. Insulator	Contact Options	Mounting Options	Polaization
725 Low Profile	0.100" (2.54mm)	0.200" (5.08mm)	05 to 150	Yes	7	1	Yes
745 High Profile	0.100" (2.54mm)	0.200" (5.08mm)	05 to 150	Yes	7	2	Yes
726 Low Profile	0.125" (3.18)	0.250" (6.35mm)	50 to 120	Yes	7	1	Yes
746 High Profile	0.125" (3.18)	0.250" (6.35mm)	50 to 120	Yes	7	2	Yes
727 Low Profile	0.156" (3.96mm)	0.200" (5.08mm)	05 to 86	Yes	7	1	Yes
747 High Profile	0.156" (3.96mm)	0.200" (5.08mm)	05 to 86	Yes	7	2	Yes

Rugged Board to Board Connections

High Reliability Backplane Interconnect solution



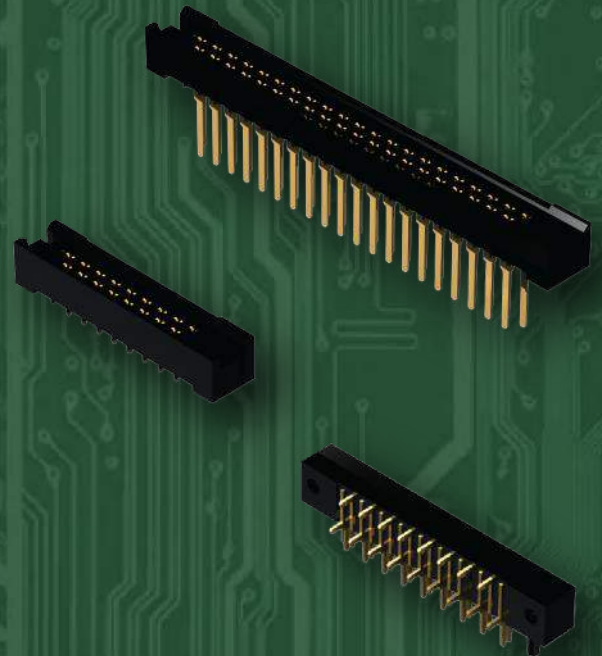


Metal to Metal Card Edge Connectors

The EDAC E-Met family is a two piece, metal to metal, high reliability connector solution. Utilizing our Edacon hermaphroditic contacts, the fork-like design incorporates four mating surfaces providing a gas tight connection with high shock and vibration resistance. For board to board, or wire to board applications, they can be used with 0.062" or 0.093" printed circuit boards.

Features

- Edacon hermaphroditic contact mating design
- High shock and vibration resistance with 10 amp current rating
- 0.200" (5.08mm) contact spacing X 0.125" (3.18mm) row spacing with staggered grid
- Plug termination is a PC tail
- Receptacle terminations include PC tail, wire hole and wire wrap



www.edac.net



EDAC

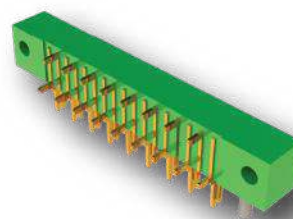
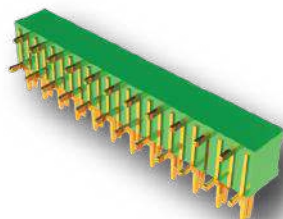
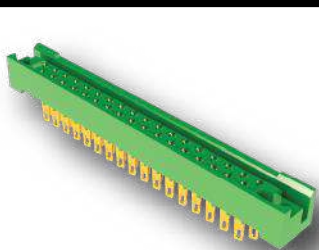


Metal to Metal Card Edge Connectors

Series	Contact Pitch	Row Spacing	No. Of Contacts	High Temp. Insulator	Contact Options	Mounting Options	Polaization
415/438 Receptacle	0.200" (5.08mm)	0.125" (3.18mm)	17 to 47	Yes	6	4	Yes
421/422/423 Plug	0.200" (5.08mm)	0.300" (7.62mm)	17 to 47	Yes	2	1	No
408/424 Receptacle	0.200" (5.08mm)	0.125" (3.18mm)	17 to 47	Yes	11	4	No

Rugged Board to Board Connections

Ultra High continuity & shock and vibration resistant



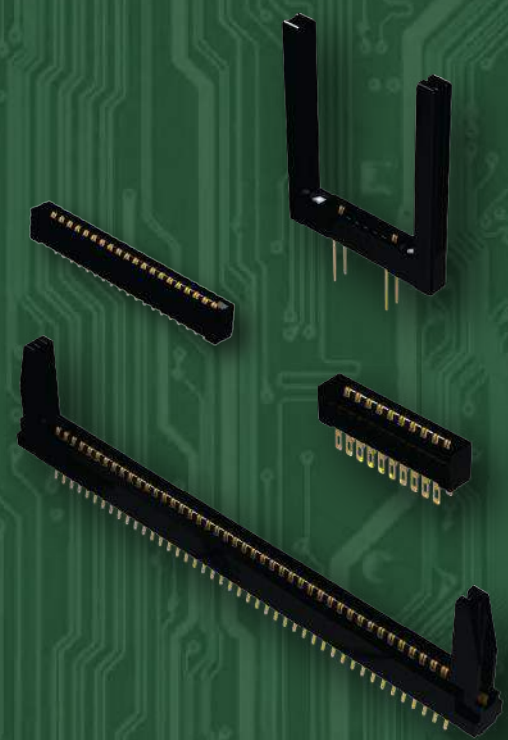


High Temp. Card Edge Connectors

EDAC High Temp card edge connectors utilize high temp insulators ideal for the RoHS infrared soldering process. All of the features of our standard cardedge are available in these ruggedized versions. A solid performer over a wide temperature range from -40° C to +125° C.

Features

- 6-88 contacts in single or dual row
- 5 amps contact rating
- Wide variety of mounting options
- Standard PC tail, 90 degree bend or wire wrap contacts
- Diallyl Phthalate or Polyphenylene Sulfide high temp material



www.edac.net

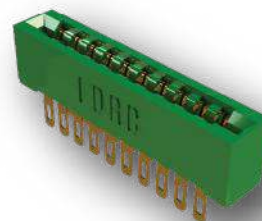
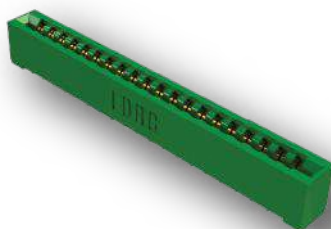
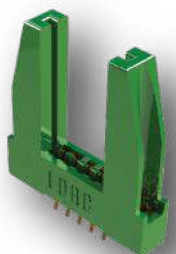


High Temp. Card Edge Connectors

Series	Contact Pitch	Row Spacing	No. Of Contacts	High Temp. Insulator	Contact Options	Mounting Options	Polarization
Diallyl phthalate							
807	0.156" (3.96mm)	0.200" (5.08 mm)	06 to 88	Yes	25	7	Yes
833	0.156" (3.96mm)	0.200" (5.08 mm)	06 to 88	Yes	14	7	Yes
837	0.156" (3.96mm)	0.200" (5.08 mm)	06 to 88	Yes	14	7	Yes
842	0.100" (2.54mm)	0.200" (5.08 mm)	05 to 116	Yes	14	7	Yes
845	0.100" (2.54mm)	0.250" (6.35mm)	05 to 144	Yes	14	7	Yes
846	0.125" (3.17mm)	0.200" (5.08mm)	05 to 100	Yes	12	10	Yes
Polyphenylene sulfide							
857	0.156" (3.96mm)	0.200" (5.08mm)	06 to 88	Yes	25	7	Yes
887	0.156" (3.96mm)	0.200" (5.08mm)	06 to 88	Yes	14	7	Yes
892	0.100" (2.54mm)	0.200" (5.08mm)	05 to 116	Yes	14	7	Yes
895	0.100" (2.54mm)	0.200" (5.08mm)	05 to 144	Yes	14	7	Yes
896	0.125" (3.17mm)	0.250" (6.35mm)	05 to 100	Yes	12	10	Yes

High insulation temperature for RoHS process!

Solution of connection card-to-card superior...





High Speed Edge Connectors

EDAC PCIE 3.0 and SAS Card Edge Connectors are a high speed board to board interconnect solution. Differential pair signaling provides for low insertion loss in a dense package that conserves valuable board space. Widely used in server backplanes these fine pitch connectors come in a variety of orientations and terminations to meet all design parameters.

Features

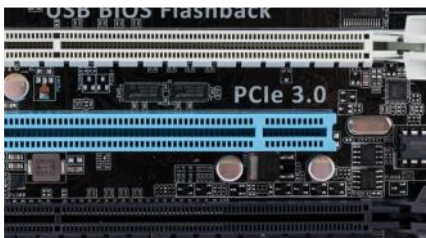
- PCIE 3.0 available in 20 to 200 contacts
- SAS available 29 or 68 contacts
- Data transmissions up to 21 Gbps
- Vertical or right-angle orientations
- SMT or Press-Fit terminations
- SAS 3.0 and PCIE 3.0 compliant



www.edac.net



EDAC

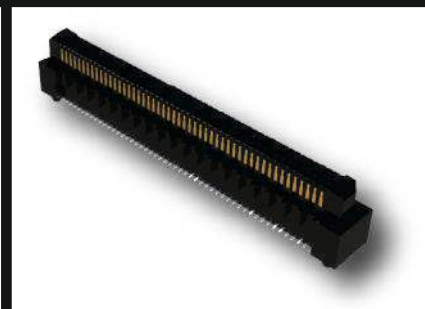
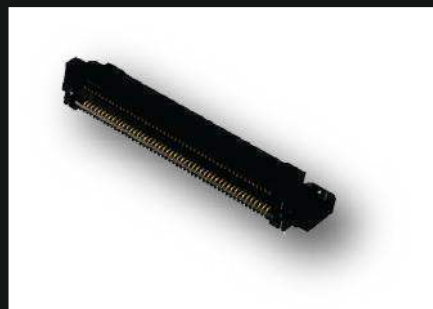
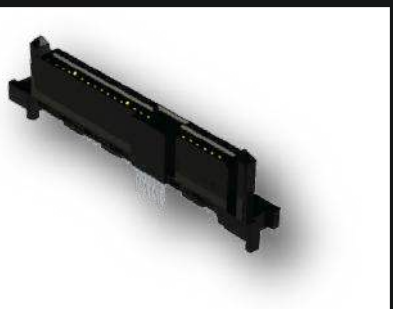


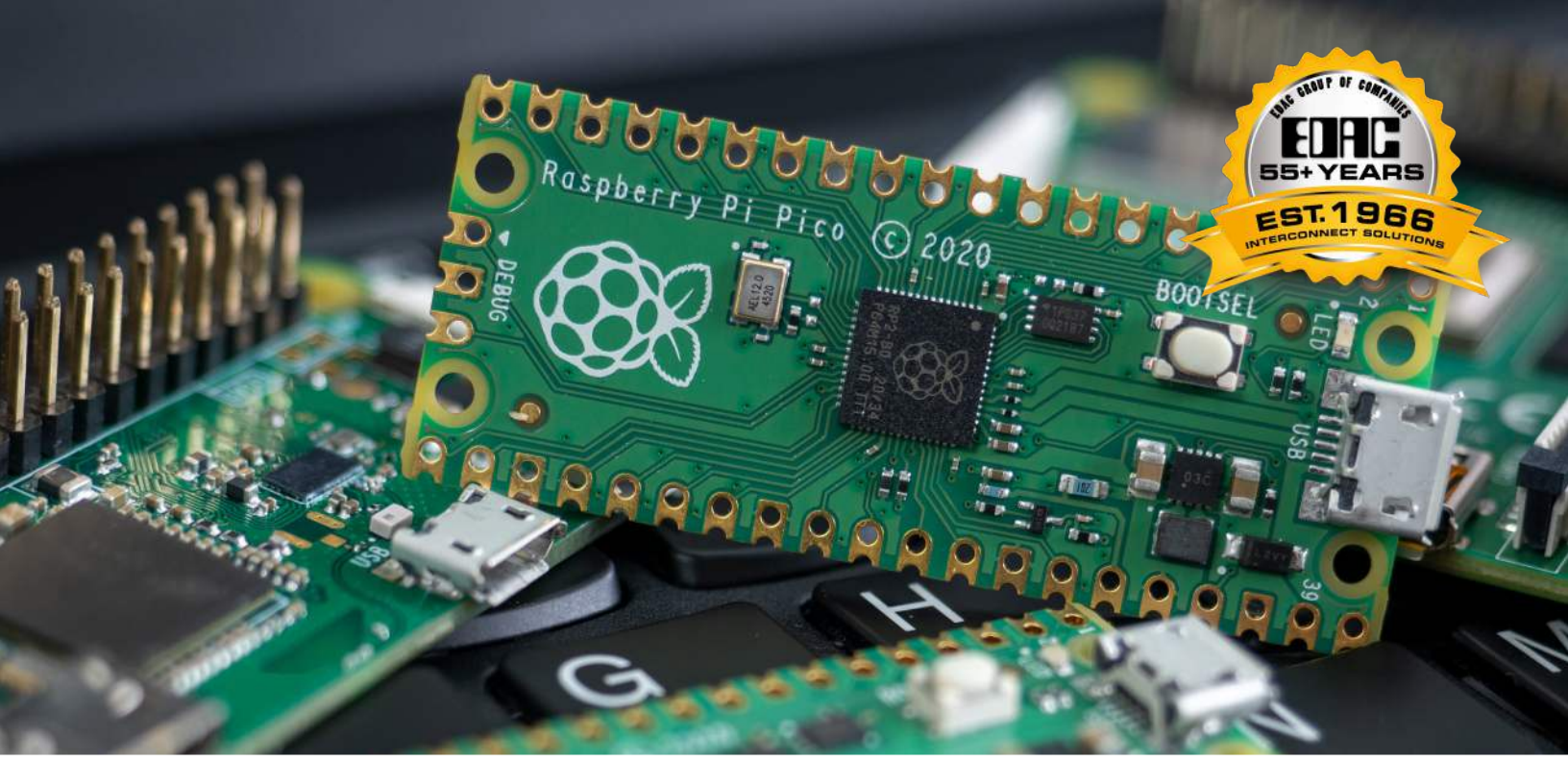
High Speed Edge Connectors

Series	Contact Pitch	No. Of Contacts	Contact Type	High Temp. Insulator	LATCHING	Data Speed	Orientation
PCIE 3.0							
370	0.03" (0.8mm)	20 to 200	Through Hole	Yes	No	21 Gbps	Vertical
371	0.03" (0.8mm)	100 to 180	SMT	Yes	No	21 Gbps	Vertical
472	0.03" (0.8mm)	100-150	SMT	Yes	No	19 Gbps	Vertical
473	473	100-150	SMT	Yes	No	19 Gbps	Rt. Angle
SAS							
270	0.05 / 0.03" (1.27 / 0.8mm)	29	SMT	Yes	No	16 Gbps	Rt. Angle
271	0.05 / 0.03" (1.27 / 0.8mm)	68	SMT	Yes	No	16 Gbps	Vertical
272	0.05 / 0.03" (1.27 / 0.8mm)	29	Press-Fit	Yes	No	16 Gbps	Vertical
273	0.05 / 0.03" (1.27 / 0.8mm)	29	SMT	Yes	No	16 Gbps	Vertical

High Speed connectors for solid data infrastructure

SAS 3.0 and PCIE 3.0 full compliance



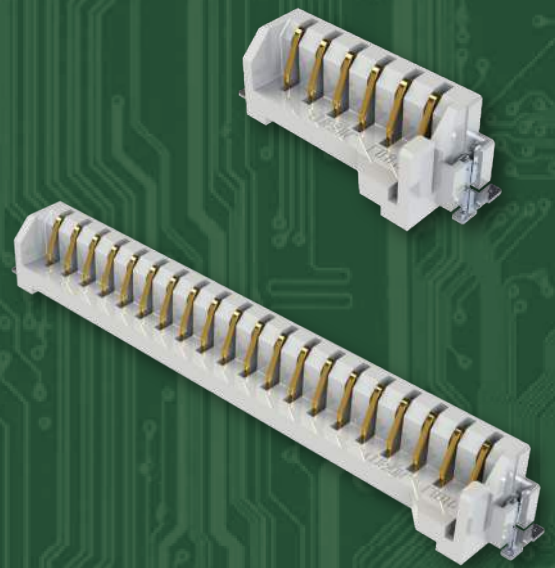


ClipZin SMT Card Edge Connectors

EDAC's Clipzin is a PCB-mounted edge connector that allows single board modules to be fixed to the PCB. Featuring a low-profile, surface mount installation, the Clipzin will allow rapid connection and disconnection of the module, while a retention clip ensures that the board will not unmate during use. This makes it the ideal solution for the development environment, while also providing the security required for production applications.

Features

- Available in 6, 8, 17, and 20-way positions in surface mount
- Eliminates the need to solder pin headers and mount single board modules to the PCB
- Enables quick mating and un-mating to single castellated module boards allowing for rework on exiting board or to swap out for a new one to expedite product testing and programming
- Retention clips to further secure the boards to the PCB
- Reliable and consistent connection between contacts and edge of boards



www.edac.net    

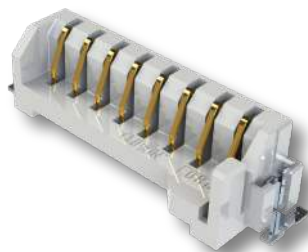
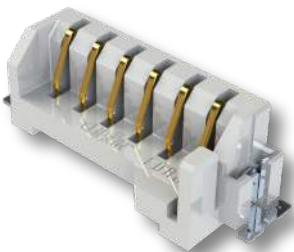


ClipZin SMT Card Edge Connectors

Series	Contact Position Options	Latching	Current Rating	Terminal Plating	Terminal Material
299	6, 8, 17, & 20	Yes	1A Max / Contact	Gold Flash	Phosphor Bronze

Up to 500 mating cycles with quick secure latching

Built to last in any environment with operating temperatures of -40°C to +85°C





Rectangular Connectors

EDAC Rack & Panel connectors offer a high reliability connection, ideal where a large number of wires are interconnected to a panel. Available in seven body sizes ranging from 14 to 120 contact positions. The hermaphroditic contact design provides a gas tight connection with superior shock and vibration resistance. Ease of mating is facilitated with the use of an actuating screw and lock nut.

Features

- Industry standard connector with highly dependable contacts
- Hermaphroditic contact design for no-fail interconnections
- Gold over nickel plating for wire hole, PCB, wire-wrap and crimp contacts
- In sizes of 14 to 120 positions, with actuating screw or locknut and polarizing hardware
- Plastic and metal covers with cable clamps for strain relief
- Tools available for contact installation, removal, crimping and polarization



www.edac.net



EDAC



Rack & Panel Connectors

Series	No. Of Contacts	Contact Options	Ins. Material Options	Cover Options	Hardware Options	Polarization
516	20-120	7	3	7	5	Yes
519	14 or 36	7	1	7	5	Yes
556	3	7	1	N/A	N/A	Yes

Ultimate high continuity backplane connector

Shock and vibration proof solution!



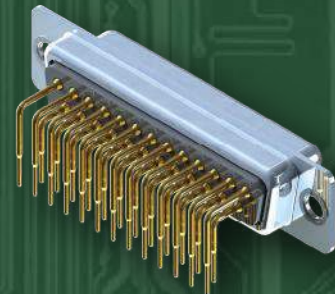


Dsubs Connectors

In the D-Mate family, EDAC offers an extensive range of industry standard D-Subminiature connectors. Available in standard density with 9, 15, 25, 37, and 50 contacts or high density versions with 15, 26, 44, 62 and 78 contacts. Vertical and right angle orientations, along with a variety of termination, plating and mounting options are available. They're also available in a stacked version.

Features

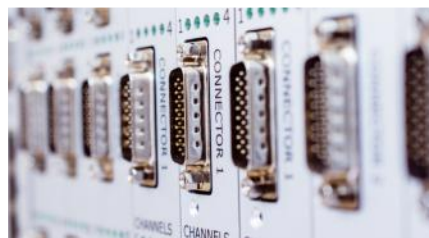
- Various industry standard footprints available in low or high density
- Plugs and receptacles in 9, 15, 25, 26, 44, 62 or 78 contact sizes
- Pin and socket contact mating design with P.C. tail termination
- Right angle and vertical orientations
- Metal shell provides EMI/RFI shielding, plug shell indents provide grounding and additional mating retention
- Board mounting features include threaded hole, two or four prong board locks for exceptional retention to P.C. board
- Flange mounting options for panel mount or connector mating include through hole, threaded holes and threaded standoffs with M3 or #4-40 UNC
- Metal or plastic body is available
- High temp options available



www.edac.net



EDAC



Dsubs Connectors

Series	No. Of Contacts	Plating Options	No. Of Contact Codes & Density	High Temp. Insulator	Mounting Options	Flange Mtg. Options
M/F						
621/622	9 to 37	Flash-30"μ gold	2 std.	Yes	4	6
623/624	9 to 25	Flash-30"μ gold	1 std.	Yes	2	4
625/626	9 to 37	Flash-30"μ gold	1 std.	Yes	3	5
627/628*	9 to 50	Flash-30"μ gold	5 std.	Yes	6	7
629/630	9 to 37	Flash-30"μ gold	1 std.	Yes	3	4
632 (F)	15	Flash-30"μ gold	2 High	Yes	1	4
633/634	15 to 78	Flash-30"μ gold	2 High	Yes	4	5
637/638	5 to 78	Flash-30"μ gold	3 High	Yes	3	7
661-664	9 to 37	Flash-30"μ gold	1 std.	Yes	4	4

*Available with plastic or metal body

Widest range of options available to meet all design requirements

Industry standard foot prints for drop in replacements



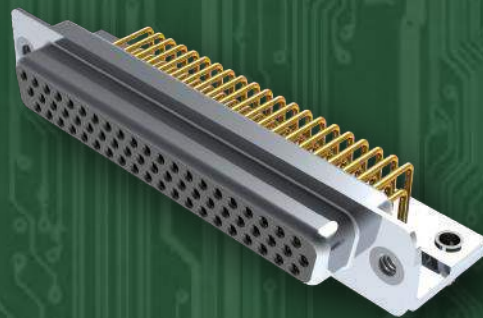


Machined Dsub Connectors

The EDAC D-PIN family of D-Subminiature connectors are manufactured using precision machined contacts available from 9 to 62 positions. Standard and high density, with vertical and right angle body styles available. A number of mounting and contact plating options are available. The 5 amp current rating along with a wide operating temperature range provides for use in rugged environments.

Features

- 5 amp precision machined contacts
- Plug and receptacles in 9, 15, 25, 26, 37, 44, 50 and 62 positions
- Pin and socket contact mating design with P.C. tail termination
- Mounting options for panel mount or connector mating include through hole, threaded inserts, 4 prong board locks and removable threaded standoffs
- Wide operating temperature of -55°C to +125°C



www.edac.net



EDAC

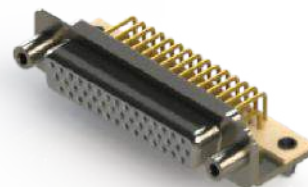
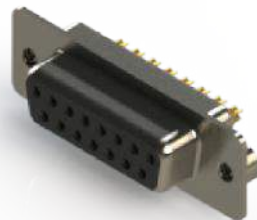


Machined Dsub Connectors

Series	No. Of Contacts	Plating Options	No. Of Contact Codes & Density	High Temp. Insulator	Mounting Options	Flange Mtg. Options
M/F						
621/622M	9 to 50	Flash-30"μ gold	1 std.	4	2	6
627/628M	9 to 50	Flash-30"μ gold	3 std.	4	2	6
629/630M	9 to 50	Flash-30"μ gold	1 std.	4	2	6
633/634M	15 to 62	Flash-30"μ gold	1 High	2	2	6
637/638M	15 to 62	Flash-30"μ gold	2 High	1	2	6

Widest range of options available to meet all design requirements

Industry standard foot prints for drop in replacements





Power Combo Dsub Connectors

The EDAC Power-D product line is a D-Subminiature style connector combining standard signal contacts with power or coaxial contacts in the same connector. The body dimensions are similar to the standard D-sub sizes 9, 15, 25, 37 and 50 pin, and are offered in 22 different configurations. Power contacts up to 40 amps, or coaxial contacts with either 50 or 75 ohm impedance ratings are available.

Features

- Plug and receptacles in vertical or right-angle orientations
- Data signal contacts at 5 amps & power contacts handling 10, 20, 30 or 40 amps
- Pin and socket contact mating design with P.C. tail and solder cup termination
- Metal shell provides EMI/RFI shielding while plug shell indents provide grounding and additional mating retention
- Mounting options for panel mount or connector mating include through hole, threaded hole and threaded standoffs
- D-shaped connector mating outline provides polarization



www.edac.net



EDAC

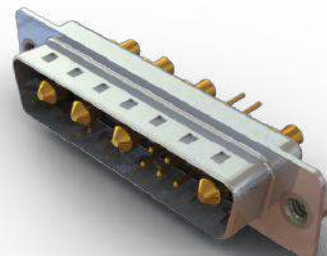
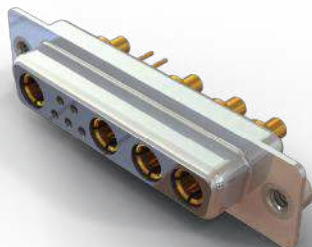
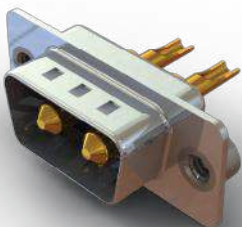


Power Combo Dsub Connectors

Series	No. Of Layout Options	Plating Options	Current Rating Power Contacts	Mounting Options	Impedance Rating Coaxial Contacts
620C	22	Flash-30 μ gold	10 - 40 amps	11	50 or 75 Ohms
627C	22	Flash-30 μ gold	10 - 40 amps	11	50 or 75 Ohms
628C	22	Flash-30 μ gold	10 - 40 amps	11	50 or 75 Ohms
629C	22	Flash-30 μ gold	10 - 40 amps	11	50 or 75 Ohms

High Speed video signal interface

Hot pluggable with solid mating force!



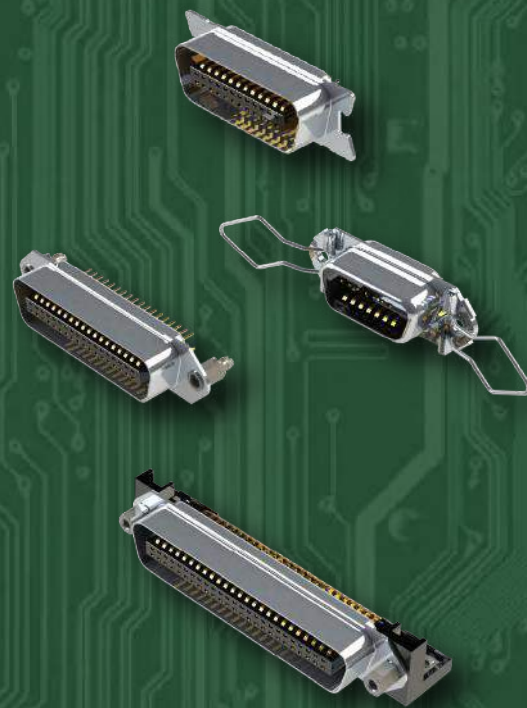


Parallel Interface Dsub Connectors

EDAC B57 connectors are parallel port interfaces fully compatible with all industry standards. Ribbon style contacts are utilized along with board locks for superior mating and retention forces. Both board receptacle and male plug cable versions are available.

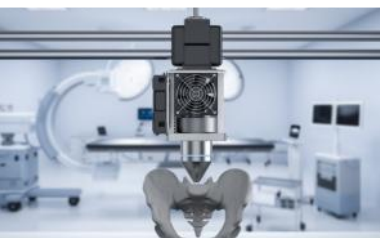
Features

- 14, 24, 36, 50 or 64 positions available
- Plating options from flash to 30u" gold
- Durable phosphor bronze contacts with 1 amp current rating
- Boardlocks for superior retention
- Male plug on cable side has IDC contacts for easy assembly



EDAC

www.edac.net    



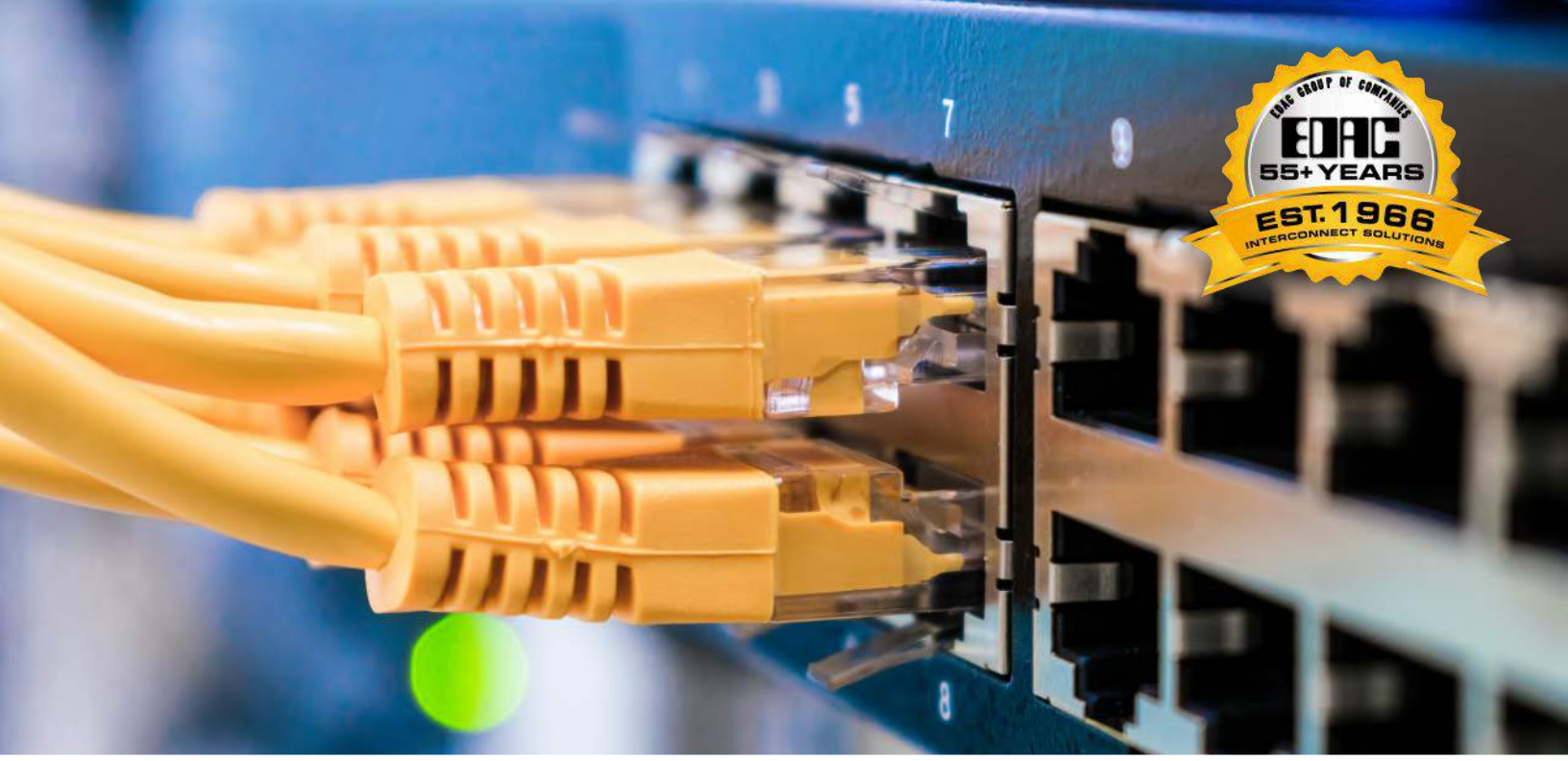
Parallel Interface Dsub Connectors

Series	No. Of Contacts	Plating Options	No. Of Contact Codes & Density	Board Mounting Options	Contact Styles
B57	14 / 24 / 36 / 50 / 64	Flash-30 μ gold	60 High	8	4 - 6

High Speed video signal interface

Hot pluggable with solid mating force!





Modular Jack Connectors

The EDAC D-Seal series of IP67 rated waterproof D-Subminiature connectors are available in both standard and high density packages. Plug & receptacles in 9, 15, 25, 26 and 44 pin versions are available as well as high power combo configurations. Vertical and right angle footprints, with a variety of termination styles, contact plating thicknesses, and mounting options are available. A solid performer in ruggedized applications and harsh environments.

Features

- Standard and high density plug and receptacles in 9, 15, 25, 26 and 44 contact pin sizes
- Signal along with high power contacts up to 40 amps combined in one connector
- Plug shell indents provide grounding and additional mating retention
- Mounting options for panel mount or connector mating include threaded inserts and threaded standoffs
- Epoxy sealed by special process providing zero ingress, no wicking up leads and a smooth molded finish with no air bubbles. Combined with solid O-ring seal to panel
- Degree of Protection: IP67 as per IEC60529



www.edac.net



EDAC



Modular Jack Connectors

Series	Type/ Contacts	No. Of Ports	Orientation	No. Of Rows	Shielded	Plating Option	LED'S
J20/28/2K	RJ45/8	1	Vertical	1	N	Flash-50"μ gold	N
J21/24/2X	RJ11/4	1	Vertical	1	N	Flash-50"μ gold	N
J2L	RJ45/8	1	Vertical	1	Y	Flash-50"μ gold	N
J2T	RJ45/8	1	45 Degree	1	Y	Flash-50"μ gold	N
J2W	RJ45/32	4	Vertical	1	N	Flash-50"μ gold	Y
J53	RJ11/8	2	RT. Angle	1	N	Flash-50"μ gold	N
J60/93	RJ45/32	4	RT. Angle	1	Y	Flash-50"μ gold	N
J67	RJ45/32	4	RT. Angle	1	N	Flash-50"μ gold	Y
J6A	RJ45/32	2	RT. Angle	1	Y	Flash-50"μ gold	N
J6D/6E/J9P	RJ45/8	1	RT. Angle	1	Y	Flash-50"μ gold	Y
J79	RJ45/8	1	RT. Angle	1	N	Flash-50"μ gold	N
J96	RJ45/16	2	Stacked	2	Y	Flash-50"μ gold	Y
J9F	RJ45/32	4	Stacked	2	N	Flash-50"μ gold	N
J9Q/J6F/JS8	RJ45/8	1	RT. Angle	1	Y	Flash-50"μ gold	N
JF2	RJ45/16	2	Vertical	1	N	Flash-50"μ gold	N
JG2	RJ45/24	3	RT. Angle	1	N	Flash-50"μ gold	N
JPG	RJ45/8	1	Reverse Vert.	1	N	Flash-50"μ gold	N

E-Jax provides an extensive offering of RJ45 standard modular Jacks

Widest array of options including plating, LED's, EMI fingers and tab orientation





USB Connectors

EDAC Standard USB's are available in all types A,B and C in vertical or right angle orientations. USB's combine data and power in a small package. Type C offers ten times the speed of conventional USB's plus cords will mate in either direction.

Features

- USB Type A, B and C are available
- Up to 10 Gbps communication speed for USB Type C 3.1
- Industry standard plug and play technology
- Hot pluggable
- Compatible with asynchronous and isochronous data transfer methods
- Stacked versions available up to 4 ports



www.edac.net

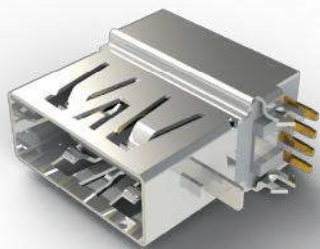


USB Connectors

Series	Total Contacts	Plating Option	Contact Code	Pkg. Material	Type
690A-N	4/8/9/18	Flash - 30µ" Gold	RA / V & Cable End	PA/PBT/LCP	A2.0-3.0 Receptacles
690P-S	4/9	Flash - 30µ" Gold	RA / V & Cable End	PA/PBT/LCP	A2.0-3.0 Receptacles
690T	5	Flash - 30µ" Gold	RA	LCP	Mini-B - Micro-B Receptables
691C/E	4	Flash - 30µ" Gold	Cable End	PA/PBT	A2.0-3.0 Plugs
691F	4/9	Flash - 30µ" Gold	Cable End	PA/PBT/LCP	A2.0-3.0 Plugs
691G	5	Flash - 30µ" Gold	Cable End	PA/PBT/LCP	Mini-B - Micro-B Plugs
698A-C	6/16/24	Flash - 30µ" Gold	RA & V	PA/PBT/LCP	C Receptacles
699B/C	16/24	Flash - 30µ" Gold	Cable End	LCP	C Plugs

EDAC USB connectors offer power and data transmission in a small package

Type C accepts cables either direction and it is 10 times speed!





HDMI Connectors

EDAC HDMI connectors follow industry standards and are available in vertical or right angle orientations. Single or dual port versions are available. These deliver high speed video transmissions resulting in very high resolution images.

Features

- Standard 19 pin type A, micro versions, and an automotive shrouded version are available
- Vertical or right angle and single or dual stacked
- Plating options from gold flash to 30u" gold for high insertion cycles
- Hot pluggable
- Synchronous and asynchronous data transfers



www.edac.net



EDAC



HDMI Connectors

Series	Total Contacts	Plating Option	Contact Codes	Pkg. Material	Type
694A	19	Flash - 30µ" Gold	Angle Dt.	LCP	A2.1 Receptacles
694B-E	19	Flash - 30µ" Gold	Angle Dt.	LCP	A Receptacles
694F	19	Flash - 30µ" Gold	Angle Dt.	LCP	A Receptacles
694H	19	Flash - 30µ" Gold	Angle Dt.	LCP	D Receptacles

EDAC HDMI connectors deliver superior high resolution video

Industry standard footprints and board heights to match your designs



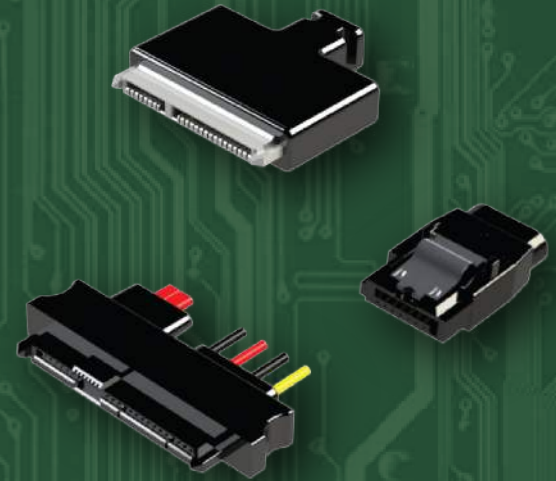


SATA Connectors

EDAC E-Sata Connectors are an established computer bus solution interconnecting mass storage devices in a system. E-Sata has similar infrastructure to standard USB's but utilizes 7 contacts. Both data and power can be transmitted through a single connector.

Features

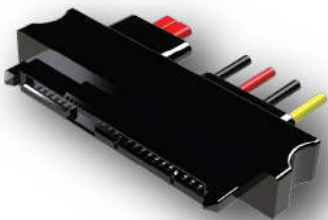
- Single port 7 contacts
- Plating options from gold flash to 30u" gold
- Right angle or vertical orientation
- Standard or high temp Insulators available
- Synchronous and asynchronous data transfers



SATA Connectors

Series	Total Contacts	Plating Option	Contact Code	Pkg. Material	Type
690	07	Flash - 30μ" Gold	Rt Angle/Vertical	PA9T/LCP	E-SATA

Industry standard product for connecting mass storage devices. E-Sata is utilized both inside and outside servers for external peripherals.



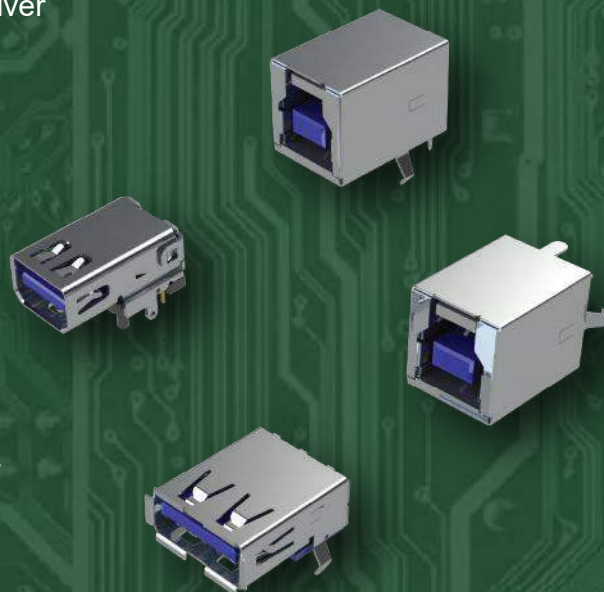


Display Port Connectors

EDAC USB 3.0 display port connectors are utilized for high speed video interface applications. Hot pluggable and with high mating and retention forces. These durable connectors efficiently deliver video signals at high speeds.

Features

- Single or dual port Type 3.0 standards
- Up to 5 Gbps communication speed
- Industry standard plug and play technology
- Hot pluggable
- Compatible with asynchronous and isochronous data transfer methods



www.edac.net





Display Port Connectors

Series	Total Contacts	Plating Option	Contact Code
690	20	Tin or Flash-50 μ m gold	1

High speed video signal interface

Hot pluggable with solid mating force



EDAC

For More Information

www.edac.net



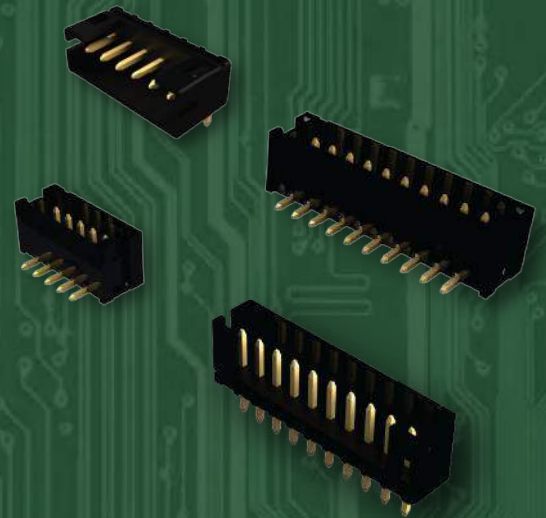


Wire to Wire & Wire to Board Connectors

The EDAC E-WTB wire to board connectors provide a reliable and economical connection. These shrouded headers are available in a variety of positions. Right angle, vertical, SMT or through hole mounted to the PCB, these connectors are ideal for use in wire harness applications and can be customized to meet your design parameters. Compatible with leading industry connectors as drop in replacements.

Features

- 0.079" (2.00mm) contact spacing
- For use with PC board thickness: 0.047" (1.2mm) to 0.062" (1.6mm)
- Low profile insulator body: 0.185" (4.7mm) width, 0.240" (6.10mm) height
- Contact termination options include: P.C. tail and surface mount
- Top entry or side entry configurations
- Designed for high-density connection of internal wires to PCB



www.edac.net



EDAC



Wire to Wire & Wire to Board Connectors

Series	No. of Contacts	Latching	Current Rating	Top or Side Entry	Through Hole or SMT
140	2-16	Yes	2 amps	Both Available	Both Available

Economical wire to board interconnect solution with E-WTB shrouded headers

Easily customized to meet all design parameters



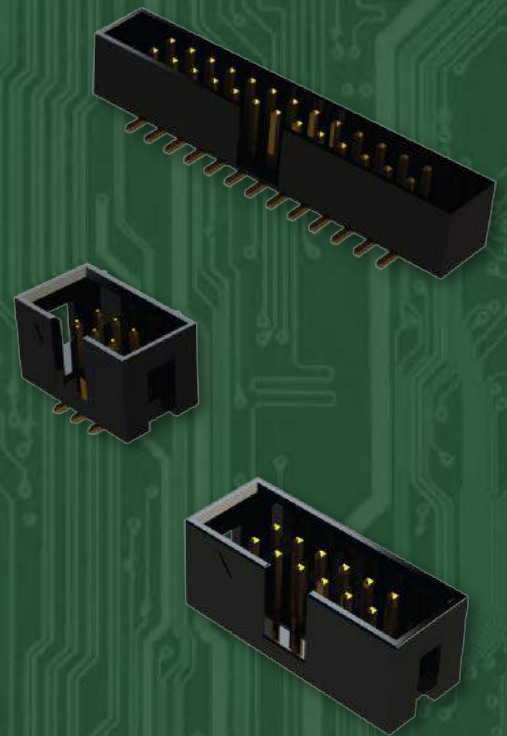


Box Header Connectors

EDAC Box headers are widely used for board to board or wire to board connections. Right angle, vertical and even custom bends are available. The breakaway design allows for separation into smaller units.

Features

- Various contact pitches available
- Single or double row
- Plating options from gold flash to 30u"gold
- Open or closed ends with or without latches
- Various housing height options



www.edac.net



EDAC

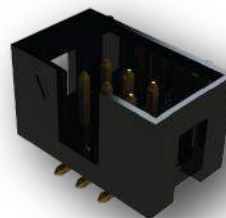
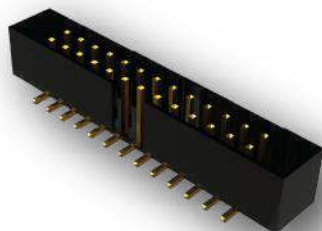


Box Header Connectors

Series	Contact Pitch Option	No. Of Contacts	Plating Options	Number of Rows	Tail Types	Housing Height Options	End Termination Options
150	7	4 to 80	Tin or Flash-30 μ " gold	1 or 2	15	12	7

Rugged Board to Board Connections

Latching options for superior shock and vibration resistance



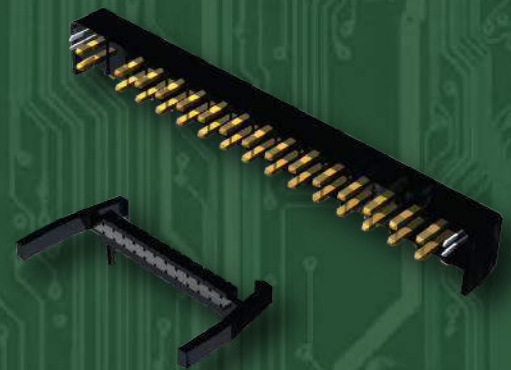


Pin Header Connectors

The EDAC E-PIN male headers mate with the E-Socket receptacles providing a reliable and economical BTB connection. Available in multiple contact spacing options, in single, two or three row configurations. Termination styles include vertical or right angle through hole, and SMT. Contacts can be supplied with tin or various gold plating thicknesses. Available with customized mating heights, special bends, and much more.

Features

- Header posts can be cut to any height and board depth
- Wide variety of plating options
- Vertical, right angle or custom bends
- Breakaway design allows for easy separation into smaller units
- Colored insulators are available
- Wide range of custom capabilities and options
- High temperature materials are available
- 200 mating cycles minimum
- RoHS compliant



www.edac.net



EDAC

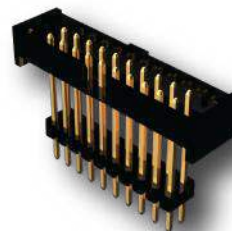
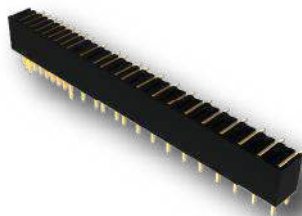
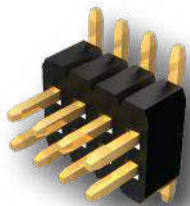


Pin Header Connectors

Series	Pitch Options	No. Of Contacts	Plating Option	Number of Rows	Tail Type Options	PKG. Options	Pin Height Options	Ins. Thickness Options	Ins. Type Options
151	8	2-80	Tin or Flash-50μ" gold	1-3	15	8	33	10	6

Rugged Board to Board Connections

Hi Reliability Backplane Interconnect solution



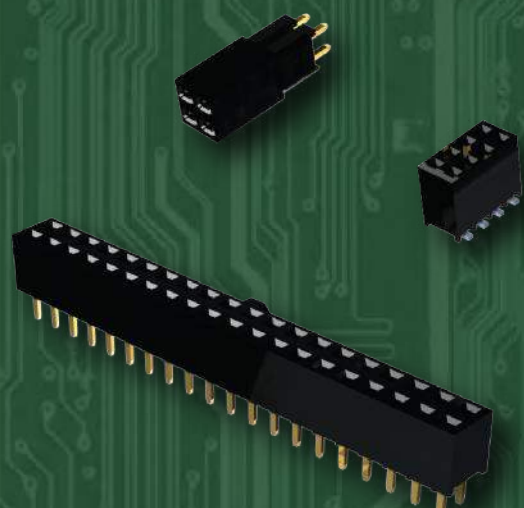


Socket Header Connector

The EDAC E-Socket receptacle headers mate with the E-Pin plug headers providing a reliable and economical BTB connection. A wide variety of sizes, in single, two or three row configurations. Multiple contact spacing options, and contact plating options, and are available in vertical or right angle, for through hole or SMT mounting to the PCB. These headers are easily customized to facilitate special mating heights, special contact bends, and much more.

Features

- Wide variety of plating options
- Vertical, right angle or custom bends
- Sockets available with right angle and SMT contacts Colored insulators are available
- Wide range of custom capabilities and options
- High temperature materials are available



www.edac.net



EDAC

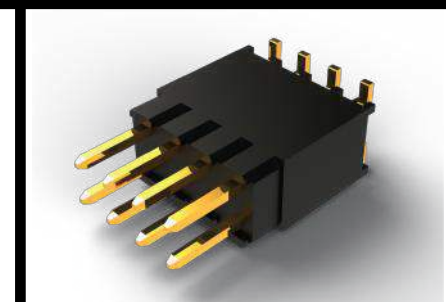
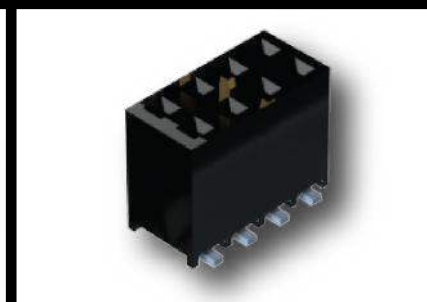


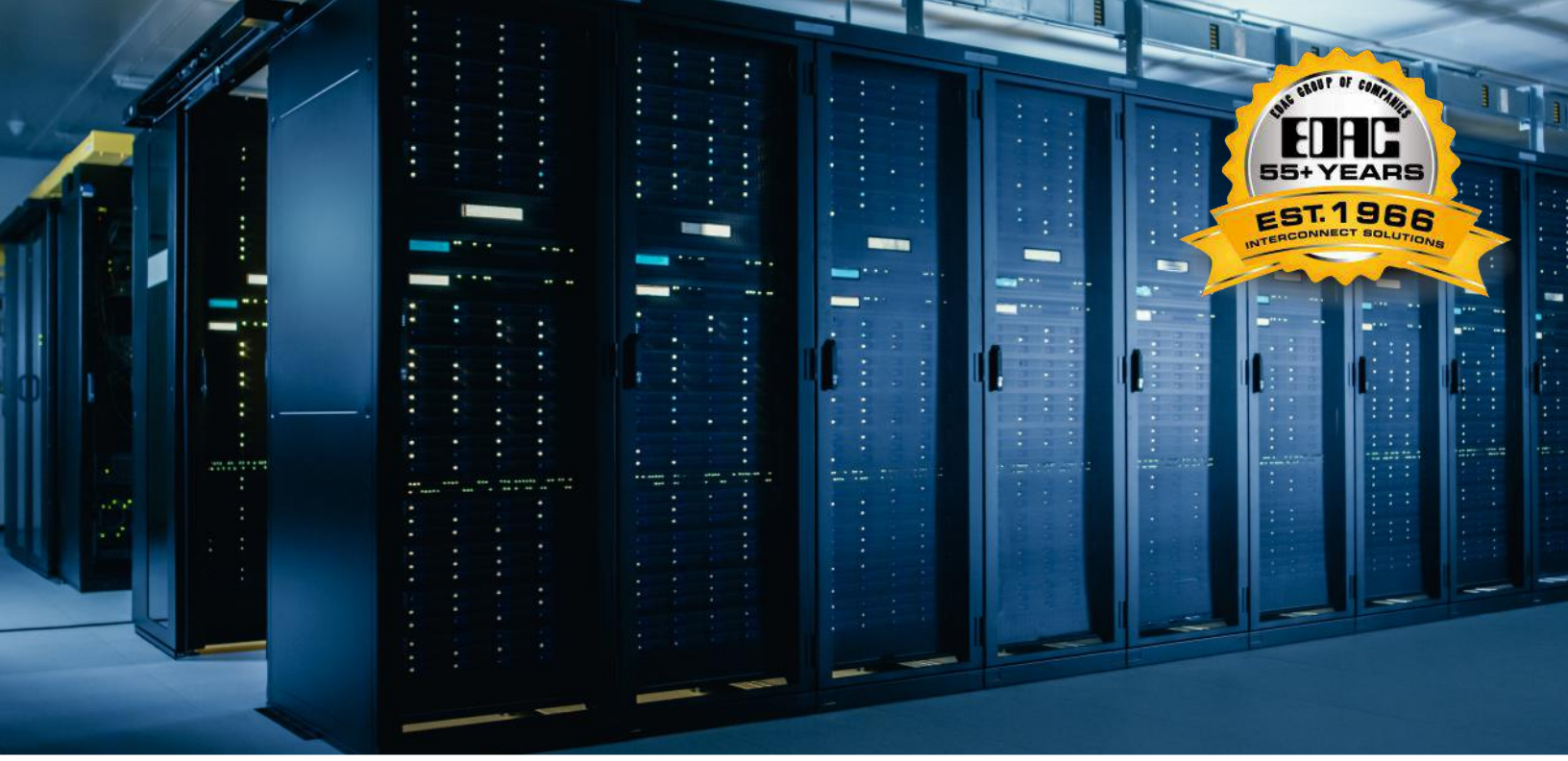
Socket Header Connector

Series	Pitch Options	No. Of Contacts	Plating Option	Number of Rows	Tail Type Options	PKG. Options	Housing Height Options	Ins. Type Options
153	7	2 to 80	Tin or Flash-50μ" gold	1 to 3	19	8	20	2

Simple and effective board to board or wire to board interconnect solution

Easily customized to meet your design parameters





Din Header Connectors

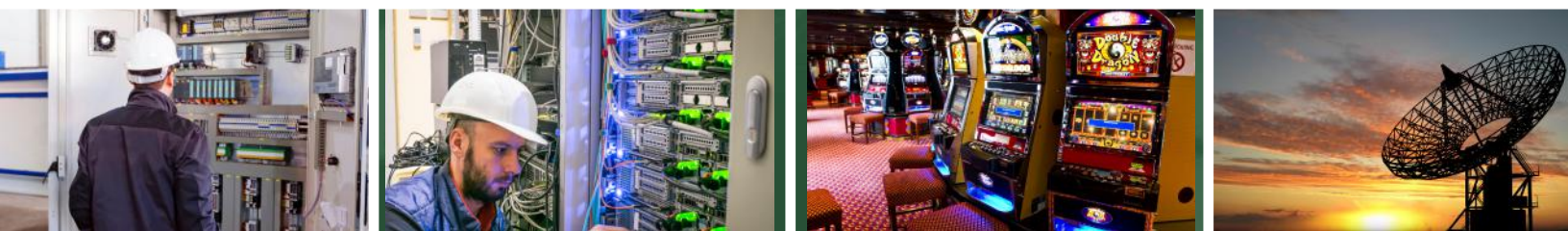
EDAC DIN connectors are fully compliant with 41612 standards. High density metal to metal connections provide a high continuity interconnect solution in backplanes. Contacts can be fully loaded or selectively loaded to protect against cross talk in high speed applications.

Features

- From 5 to 96 contacts available in three rows
- Plating options from flash to 30u" gold
- Solder tail, wire wrap and press fit terminations
- Mounting options include through hole or boardlocks
- Wide operating temp range of -55° C to +105° C



www.edac.net    

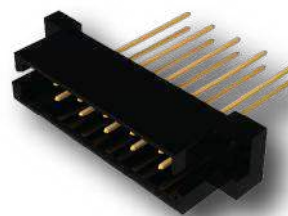
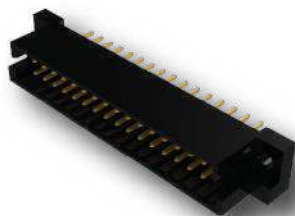
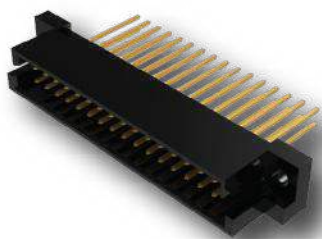


Din Header Connectors

Series	No. Of Contacts	Plating Options	Contact Option	Contact Row Arrangements	Contact Spacing Arrangements
461	5 to 64	Flash-30μ" gold	8	2	2
462	5 to 64	Flash-30μ" gold	1	2	2
493	8 to 64	Flash-30μ" gold	1	2	2
464	8 to 64	Flash-30μ" gold	2	2	2
493	5 to 96	Flash-30μ" gold	8	3	2
494	8 to 96	Flash-30μ" gold	1	3	2
495	8 to 96	Flash-30μ" gold	1	4	2
496	8 to 96	Flash-30μ" gold	8	3	2

Rugged Board to Board Connections

Hi Reliability Backplane Interconnect solution





Waterproof Dsub Connectors

The EDAC D-Seal series of IP67 rated waterproof D-Subminiature connectors are available in both standard and high density packages. Plug & receptacles in 9, 15, 25, 26 and 44 pin versions are available as well as high power combo configurations. Vertical and right angle footprints, with a variety of termination styles, contact plating thicknesses, and mounting options are available. A solid performer in ruggedized applications and harsh environments.

Features

- Standard and high density plug and receptacles in 9, 15, 25, 26 and 44 contact pin sizes
- Signal along with high power contacts up to 40 amps combined in one connector
- Plug shell indents provide grounding and additional mating retention
- Mounting options for panel mount or connector mating include threaded inserts and threaded standoffs
- Epoxy sealed by special process providing zero ingress, no wicking up leads and a smooth molded finish with no air bubbles. Combined with solid O-ring seal to panel
- Degree of Protection: IP67 as per IEC60529



www.edac.net



EDAC



Waterproof D-Sub Connectors

Series	No. Of Contacts	Plating Options	No. Of Contact Codes & Density	Ins. Color Options	Shell Plating Options	Flange Mtg. Options
M/F						
627W/628W	9 to 25	Flash-30"μ gold	4 Std.	1	1	3
629W/630W	9 to 25	Flash-30"μ gold	4 Std.	1	1	3
633W/634W	15 to 44	Flash-30"μ gold	3 High	1	1	1
637W/638W	15 to 44	Flash-30"μ gold	3 High	1	1	1

Widest range of options available to meet all design requirements

Superior IP67 waterproof solution that withstands harsh environments

Waterproof Power Combo D-Sub Connectors

Series	Power / Signal	Plating Options	No. Of Contact Codes & Density	Ins. Color Options	Shell Plating Options	Flange Mtg. Options
M/F						
627WC/628WC	1 to 5 / 0 to 20	Flash-30"μ gold	12 Std.	1	2	4
629WC/630WC	1 to 5 / 0 to 20	Flash-30"μ gold	12 Std.	1	2	6





Waterproof USB Connectors

Waterproof panel mount USB connectors Type A and B standard and micro are available offering IP67 grade protection. Quarter turn twist and lock bayonet style system offers easy mating and ultra secure connections. IP67 Waterproof board mount USB connectors feature full epoxy sealing of the contacts and an O-ring seal to the panel.

Features

- Standard USB Type A, Micro USB, Mini USB & bayonet style are available
- 1.2Mbps or 480Mbps communication speeds
- 480Mbps communication speed compatible with USB 2.0 standard
- Compatible with asynchronous and isochronous data transfer methods
- Silicone rubber seals for tight seal to panel
- Bayonet locking system for safe mating under severe vibration or shock conditions
- Micro USB board mount and type C available with all rated IP 67



www.edac.net



EDAC



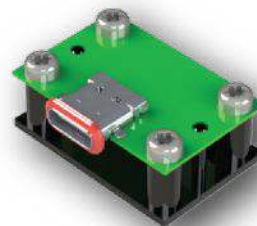


Waterproof USB Connectors

Series	Total Contacts	Plating Option	Contact Codes	Ins. Color	Type
690W	4 - 5	Flash - 30 μ " Gold	RA & Cable End	PBT/LCP	A2.0/Mini/Micro

Solid waterproof connection with superior shock & vibration resistance

Built to withstand the most harsh environments



EDAC

For More Information

www.edac.net





Waterproof HDMI Connectors

E-seal waterproof HDMI connectors follow industry standards and are available with a quarter turn, twist and lock, bayonet locking system offering easy mating and an ultra secure connection. Fully sealed on the back end with an O-ring seal to the panel insures no water ingress. These IP67 rated connectors are fully submersible and deliver high speed video transmissions resulting in very high resolution images.

Features

- Plating options from gold flash to 30u" gold plating
- Quarter turn, twist and lock, bayonet style locking mechanism
- Silicone rubber seals and fully potted terminals
- Hot pluggable
- Synchronous or asynchronous high speed data transmissions



www.edac.net



EDAC



Waterproof HDMI Connectors

Series	Total Contacts	Plating Option	Contact Code	Ins. Material	Type
694W	38	Flash - 30μ" Gold	Cable End	LCP	A

Premium IP67 connector with secure locking mechanism

IP67 waterproof connections with superior shock & vibration resistance!





Waterproof Wire to Wire & Wire to Board

The EDAC E-Inline family of waterproof plug and socket connectors provides a reliable interconnect solution in harsh environments. Single or double latch insulator designs insure superior shock and vibration resistance. A variety of styles are available for different wire gauge applications. These utilize simple crimp and poke contacts. Optional contact plugs are available for use when all contact positions are not required. Additional contacts/wires can then be added in the field.

Features

- Rated current from 3 to 10 Amps for use with wire sizes from 28 to 14 AWG
- 560 and 572 series offer double latch solution Available in wire-to-wire and wire-to-board options True crimp and poke solution
- Internal polarization to prevent mismatching
- Available with wire already installed
- Waterproof grade IP52 and IP67 certified



www.edac.net



EDAC



Waterproof Wire to Wire & Wire to Board

Series	No. of Contacts	Pitch	Current Rating	Latch Type	Polarized	Pre-Installed Seals	WP Grade
560	2,3 & 5	0.09" (2.5mm)	3 amps	Double	Y	Y	IP67
565	2,3 & 5	0.09" (2.5mm)	3 amps	Single	Y	Y	IP67
566	2,3,4 & 6	0.08" (2.0mm)	2 amps	Single	Y	Y	IP67
567	2,3,4,6 & 9	0.20" X 0.23" (5.0mm X 5.9mm)	8 amps	Single	Y	N	IP52
568	1	N/A	12 amps	Single	Y	N	IP52
570	1,2 & 3	0.23" (5.8mm)	10 amps	Single	Y	N	IP67
572	1,2 & 3	0.23" (5.8mm)	10 amps	Double	Y	N	IP67

Premium Waterproof wire to wire or wire to board solution

Optional Port Plugs allow circuits to be added in the field





Cable Assemblies

EDAC specializes in custom cable assemblies to meet or exceed the needs of your application. We have an extensive array of connectors to utilize in connecting your world. Various cable lengths, shielding, custom colors, customized connectors, wire gauges, jackets, latching mechanisms and custom markings are available.

Features

- Standard lengths from 1 to 10 meters or 3 to 30 feet
- Breakout cables for multiple terminations
- Adaptors for DVI digital to VGA analog conversion
- USB cables in standard printer/device format (A to B) and alternates (A to A, B to B)
- Mini USB, Mini DIN, RJ45, RJ11, and other computer cables available in bulk
- Virtually any cable manufactured to mate with EDAC connectors can be made



EDAC

www.edac.net    





Pressfit Card Edge Connectors



Premium high quality cables built to your exact specifications!

Let EDAC connect it all together for a top quality interconnect solution!

EDAC

For More Information

www.edac.net





Cable Assemblies

At EDAC we specialize in custom solutions meeting specific application requirements in either full custom designs or through modifications of standard products. We offer quick turn around with first article samples in as little as 4 weeks. Our engineering team will take your ideas and turn them in to reality.

Features

- Special technical requirements including high voltage or high temp
- Custom sealing to allow for use in harsh environments
- Built in security features such as keyed entry and locking systems
- Variations of standard products to fit the application for size and function
- Modifications to match competing products to fulfill end of life situations

www.edac.net



EDAC





Cable Assemblies



Custom interconnect solutions tailored to your specific applications

From concept to production we will exceed your goals



For More Information

www.edac.net



EDAC Americas

161 Alden Road, Units 7 & 8
Markham, Ontario
Canada L3R 3W7 Tel: (416) 754-3322
Fax: (416) 754-3299
customerservice@edac.net

EDAC Europe

12 Fleming Close, Park Farm North,
Wellingborough, NN8 6UF
United Kingdom
Tel: + 44 1933 427300
Fax: + 44 1933 677611
enquiries@edaceurope.net

Established in 1966, EDAC soon became a world leader in providing connectors for Card Edge and Rack & Panel applications. Since then, we have expanded our product offering to include one of the widest ranges of interconnect solutions in the world. Products include D-Sub, Modular Jacks RJ45, USB, HDMI, Inline Plug & Socket, Headers, Waterproof Connectors and Custom Solutions. Our dedicated teams of engineering, customer service, field support, and global distribution partners allow EDAC the opportunity to support many unique applications globally.

www.edac.net    

Connect with Us . . . Experience Makes the Difference