

4

3

2

1

THIS DRAWING IS UNPUBLISHED.

RELEASED FOR PUBLICATION

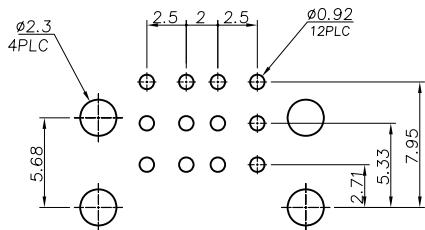
AUG 2006 .

© COPYRIGHT BY TYCO ELECTRONICS CORPORATION. ALL RIGHTS RESERVED.

LOC DW DIST

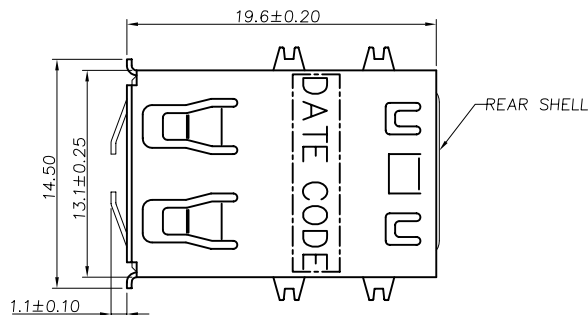
REVISIONS

P	LTR	DESCRIPTION	DATE	DWN	APVD
B3		REVISED (ECR-11-011518)	02JUN11	SC	WK



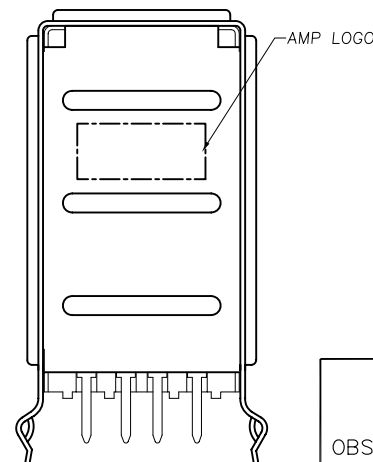
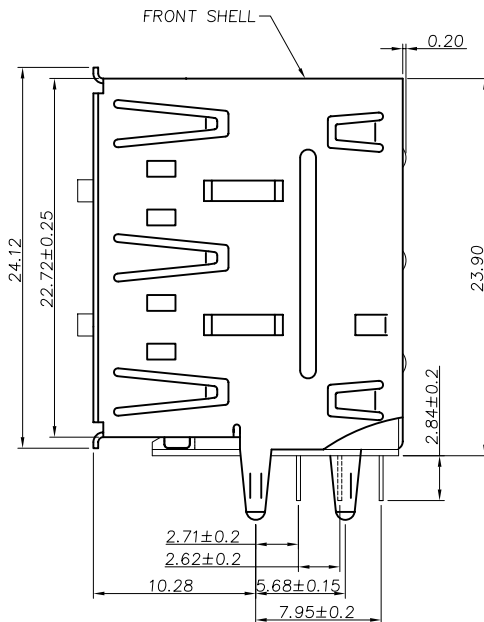
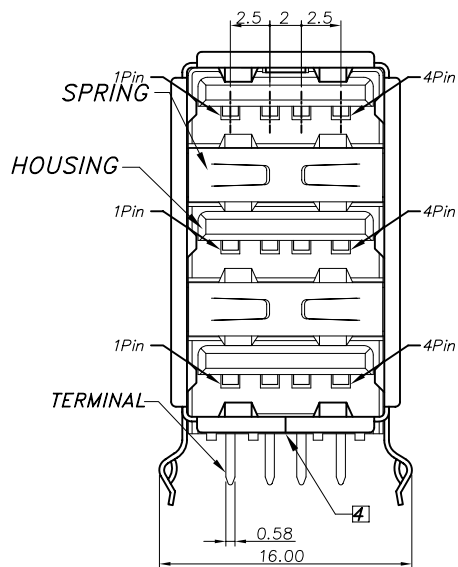
RECOMMENDED PCB LAYOUT

PCB TOLERANCE : ±0.05



NOTES :

- MATERIAL :
HOUSING : THERMOPLASTIC, UL 94V-0, COLOR: SEE TABLE.
CONTACT : PHOSPHOR BRONZE, (t=0.25mm).
FRONT SHELL & SPRING : BRASS, (t=0.30mm).
REAR SHELL : SPCC (t=0.30mm).
- FINISH :
CONTACT : GOLD PLATED(SEE TABLE) ON CONTACT AREA, 100u" MIN. TIN PLATED ON SOLDER TAILS, 50u" MIN. NICKEL UNDERPLATED ALL OVER.
FRONT SHELL: 40u" MIN. NICKEL PLATED OVER 50u" MIN. CU UNDERPLATED ALL OVER.
REAR SHELL: 100u" MIN. NICKEL PLATED OVER 100u" MIN. CU UNDERPLATED ALL OVER.
- TOLERANCE : ±0.30mm.
[A] GAP.0.25mm(MAX.)

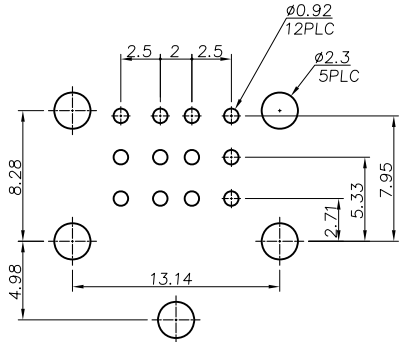


OBSOLETE	30µ"	BLACK	1734181-6
	30µ"	WHITE	1734181-5
	5µ"	BLACK	1734181-4
		WHITE	1734181-3
	GOLD FLASH	BLACK	1734181-2
WHITE		1734181-1	
	MIN. GOLD THICKNESS	HSG. COLOR	PART NUMBER

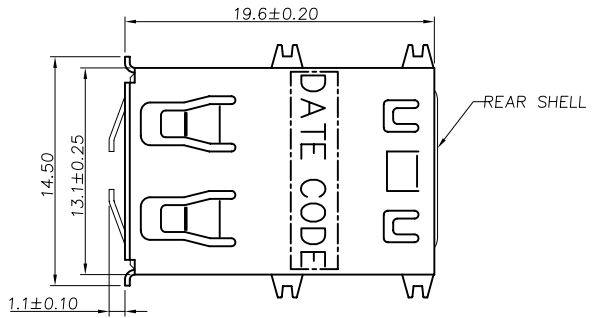
THIS DRAWING IS A CONTROLLED DOCUMENT.

DIMENSIONS: MM	TOLERANCES UNLESS OTHERWISE SPECIFIED:	DWN S. CHIEN 14APR2009	TE Connectivity
	0 PLC ± 0.3 1 PLC ± 0.3 2 PLC ± 0.3 3 PLC ± - 4 PLC ± - ANGLES ± 3°	CHK S. CHIEN 14APR2009 APVD W. KODAMA 14APR2009	
MATERIAL	FINISH	PRODUCT SPEC	NAME
SEE NOTE	SEE NOTE	108-57113	RCPT. ASS'Y TRIPLE STACKED USB, R/A, A TYPE.
		QUALIFICATION TEST REPORT	RESTRICTED TO
		501-57061	
		WEIGHT - GRAMS	SIZE CAGE CODE DRAWING NO
		CUSTOMER DRAWING	A300779 C=1734181
		SCALE	SHEET 1 of 3 REV B3

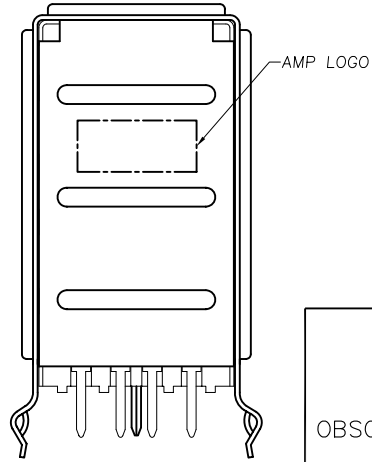
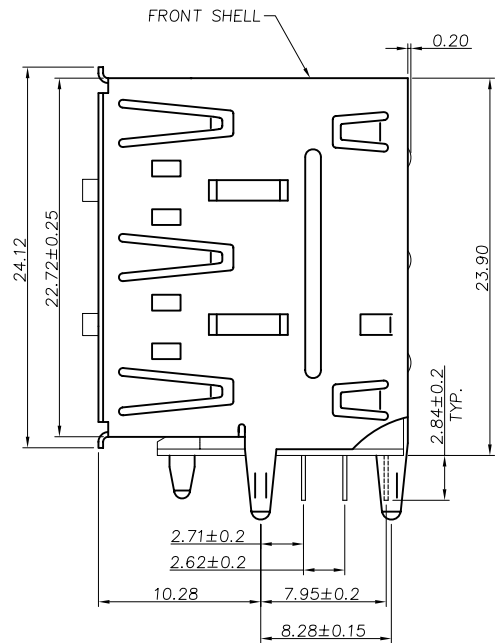
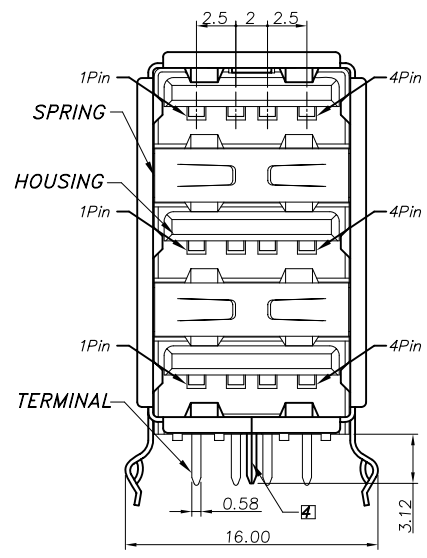
LOC		DIST		REVISIONS			
P	LTR	DESCRIPTION	DATE	DWN	APVD		
DW				SEE SHEET 1.			



RECOMMENDED PCB LAYOUT
PCB TOLERANCE : ±0.05



- NOTES :
- MATERIAL :
HOUSING : THERMOPLASTIC, UL 94V-0, COLOR: SEE TABLE.
CONTACT : PHOSPHOR BRONZE, (t=0.25mm).
FRONT SHELL & SPRING : BRASS, (t=0.30mm).
REAR SHELL : SPCC (t=0.30mm).
 - FINISH :
CONTACT : GOLD PLATED(SEE TABLE) ON CONTACT AREA, 100u" MIN. TIN PLATED ON SOLDERTAILS, 50u" MIN. NICKEL UNDERPLATED ALL OVER.
FRONT SHELL: 40u" MIN. NICKEL PLATED OVER 50u" MIN. CU UNDERPLATED ALL OVER.
REAR SHELL: 100u" MIN. NICKEL PLATED OVER 100u" MIN. CU UNDERPLATED ALL OVER.
 - TOLERANCE : ±0.30mm.
4. GAP.0.25mm(MAX.)



OBSOLETE	30μ"	BLACK	1-1734181-2
		WHITE	1-1734181-1
	5μ"	BLACK	1-1734181-0
		WHITE	1734181-9
	GOLD FLASH	BLACK	1734181-8
		WHITE	1734181-7
MIN. GOLD THICKNESS	HSG. COLOR	PART NUMBER	

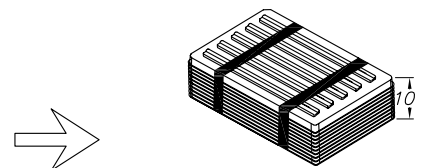
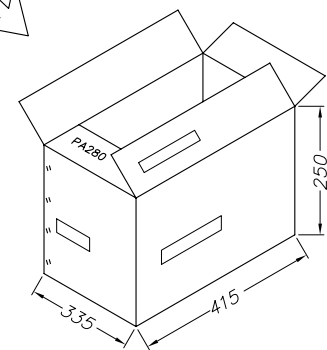
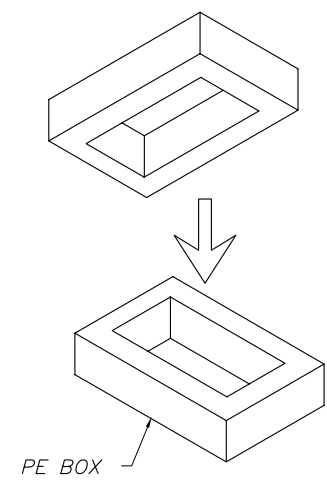
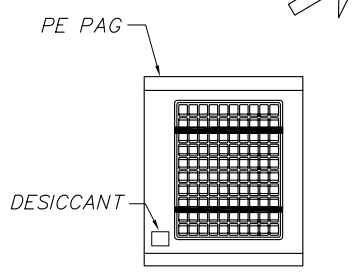
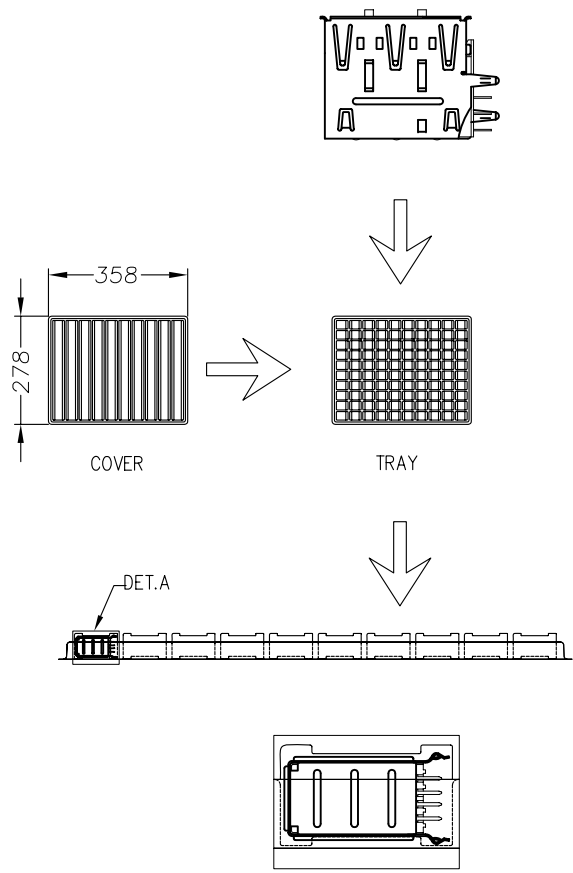
THIS DRAWING IS A CONTROLLED DOCUMENT.

DIMENSIONS: MM	TOLERANCES UNLESS OTHERWISE SPECIFIED:	DWN	TE Connectivity																					
<table border="1"> <tr><td>0 PLC</td><td>± -</td></tr> <tr><td>1 PLC</td><td>± -</td></tr> <tr><td>2 PLC</td><td>± -</td></tr> <tr><td>3 PLC</td><td>± -</td></tr> <tr><td>4 PLC</td><td>± -</td></tr> <tr><td>ANGLES</td><td>± -</td></tr> </table>	0 PLC	± -	1 PLC	± -	2 PLC	± -	3 PLC	± -	4 PLC	± -	ANGLES	± -	<table border="1"> <tr><td>APVD</td><td>NAME</td></tr> <tr><td>PRODUCT SPEC</td><td></td></tr> <tr><td>APPLICATION SPEC</td><td></td></tr> <tr><td>WEIGHT</td><td></td></tr> </table>	APVD	NAME	PRODUCT SPEC		APPLICATION SPEC		WEIGHT		RCPT. ASS'Y TRIPLE STACKED USB, R/A, A TYPE.		
0 PLC	± -																							
1 PLC	± -																							
2 PLC	± -																							
3 PLC	± -																							
4 PLC	± -																							
ANGLES	± -																							
APVD	NAME																							
PRODUCT SPEC																								
APPLICATION SPEC																								
WEIGHT																								
MATERIAL	FINISH	CUSTOMER DRAWING	SIZE: A3 CAGE CODE: 00779 DRAWING NO: C=1734181	RESTRICTED TO																				
		SCALE	SHEET 2 of 3	REV B3																				

THIS DRAWING IS UNPUBLISHED. RELEASED FOR PUBLICATION AUG 2006 .

© COPYRIGHT BY TYCO ELECTRONICS CORPORATION. ALL RIGHTS RESERVED.

LOC	DIST	REVISIONS					
DW		P	LTR	DESCRIPTION	DATE	DWN	APVD
				SEE SHEET 1.			



Every 5 trays and mantissa tray by PE packing . it should be fuled by cardboard when less than one carton .

11.53	9.31	1000	100
G.W(KGS)	N.W(KGS)	QUANTITY/BOX	PCS/TRAY

THIS DRAWING IS A CONTROLLED DOCUMENT.

DIMENSIONS: MM	TOLERANCES UNLESS OTHERWISE SPECIFIED: 0 PLC ± - 1 PLC ± - 2 PLC ± - 3 PLC ± - 4 PLC ± - ANGLES ± -	DWN	CHK	APVD	NAME
MATERIAL	FINISH	PRODUCT SPEC	APPLICATION SPEC	WEIGHT	SIZE
					CAGE CODE
					DRAWING NO
					RESTRICTED TO
					A300779
					G=1734181
					CUSTOMER DRAWING
					SCALE
					SHEET 3 of 3
					REV B3



RCPT. ASS'Y TRIPLE STACKED USB, R/A, A TYPE.