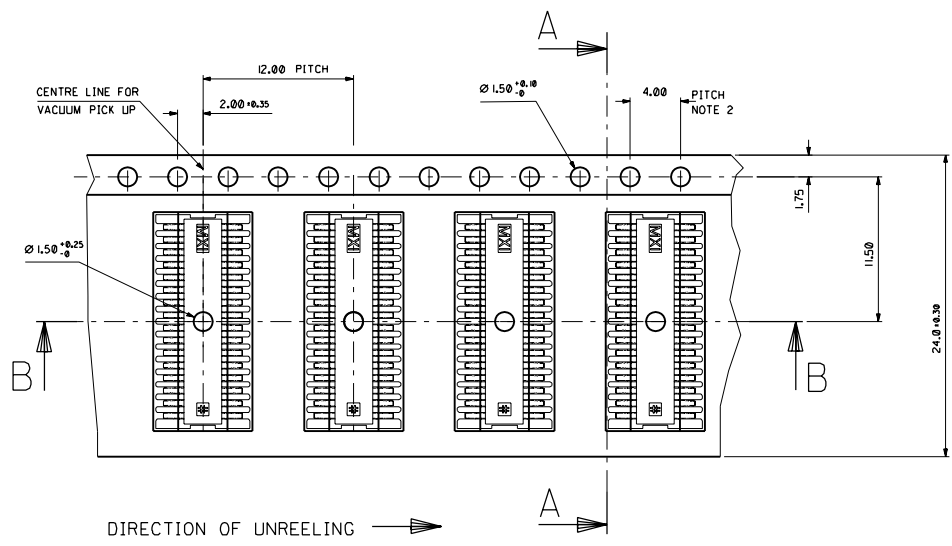
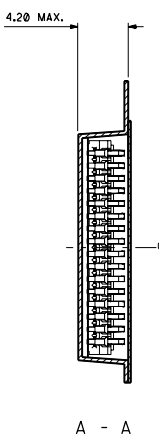
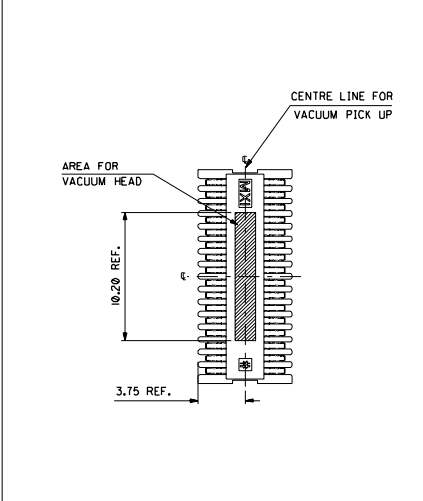
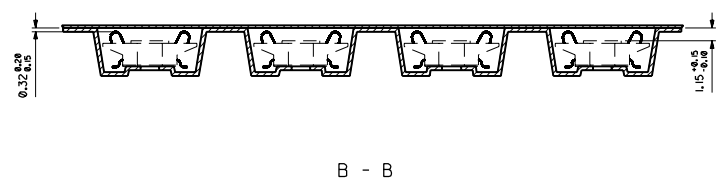
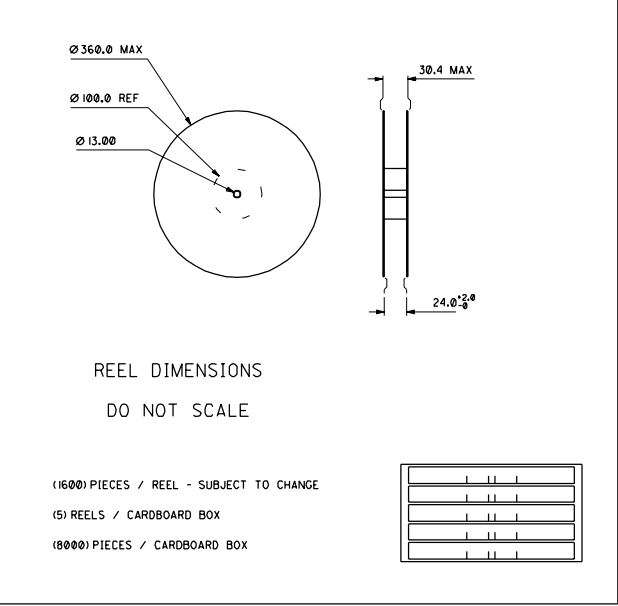


COMPONENT PICK UP DETAIL



REFERENCE ONLY



COMPONENTS	PART NO.
HOUSING	91361-0001
TERMINAL	91301-0002

NOTES:

- MATERIAL :  
CARRIER TAPE : VOLUME CONDUCTIVE POLYSTYRENE , 0.40 REF THICK , BLACK  
COVER TAPE : COLD SEAL POLYESTER , 0.06 REF THICK , TRANSPARENT
- PITCH TOLERANCE OVER ANY 10 PITCHES ±0.20
- PEEL FORCE OF THE COVER TAPE IS 0.1N TO 1.0N  
AT A MAXIMUM PEEL SPEED OF 300/min. ±10%
- PACKAGING SPEC. TBA.
- REFERENCE TO IEC 286-3 EXCEPT WHERE NOTED

DIMS FOR SUCTION PAD IEC NO. E2001-0763 DRAWN: ROC CHK: / APPR: /	QUALITY SYMBOLS MAJOR CRITICAL	GENERAL TOLERANCES: (UNLESS SPECIFIED)		SCALE 5 : 1	DESIGN UNITS <input checked="" type="checkbox"/> mm <input type="checkbox"/> INCH	DIMENSIONS: SHT REV mm INCH mm INCH mm ONLY	
		4 PLACES ±0. ±. 3 PLACES ±0. ±. 2 PLACES ±0.10 ±. 1 PLACE ±0.20 ±.	DRAWN BY & DATE ROCONNOR 99/04/15 CHECKED BY & DATE MKEANE 99/04/16 APPROVED BY & DATE MWILHITE 99/04/19	TITLE: Blister Pack - B-To-B Conn Hgt 2.98 32Ck t		CAD FILENAME S91361X1.DGN	MATERIAL NO. 91361-0002
DRAFT WHERE APPLICABLE MUST REMAIN WITHIN DIMENSIONS		THIS DRAWING CONTAINS INFORMATION THAT IS PROPRIETARY TO MOLEX INCORPORATED AND SHOULD NOT BE USED WITHOUT WRITTEN PERMISSION.					