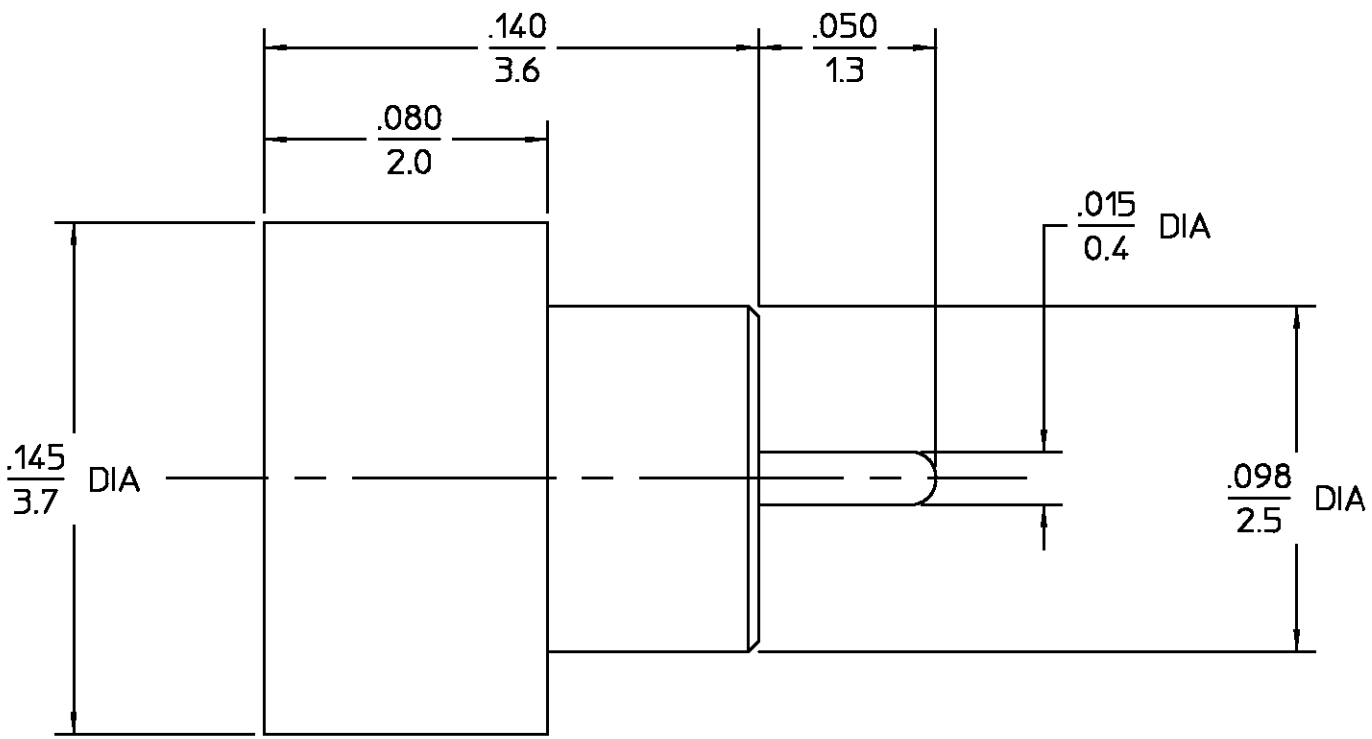
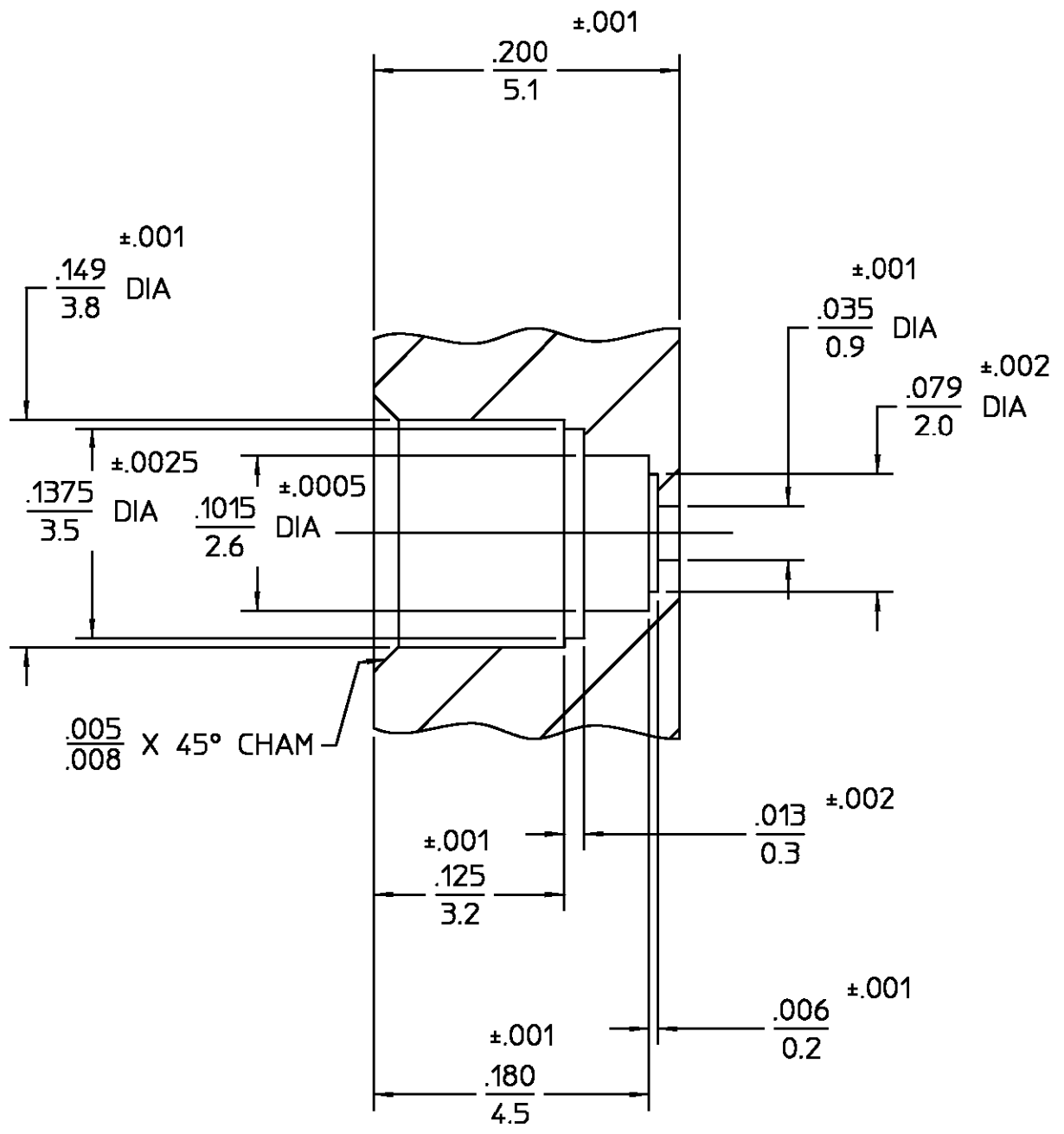


| REVISIONS | | | |
|-----------|-------------|----------------|---------------------|
| REV | DESCRIPTION | DATE | APPROVED |
| 011 | REVISED | BMH 2/24/97 | <i>DCpm</i> 2/24/97 |



RECOMMENDED MOUNTING HOLE

.XXX = in
XX.X = mm

| | | |
|---------------------------------------------------------------------------------------------------------------------------------------------------------------------------------------------------------------------------------------|-----------------------------------------------------------------------------------------|-----------------------------------------------------------------|
| CONTACT EXT HOUSING | IRON NICKEL COBALT SEALING ALLOY (KOVAR) PER ASTM F15-78 | GOLD PLATE PER MIL-G-45204 |
| DIELECTRIC | CORNING GLASS 7070 | N/A |
| COMPONENT | MATERIAL | FINISH |
| UNLESS OTHERWISE SPECIFIED DIMENSIONS ARE IN INCHES TOLERANCE ON FRAC. DEC. ANGLES = 1/64 = .005 = ° | DRAWN BY <i>RAC</i> DATE 1/30/95 CHECKED BY <i>RAC</i> APPD BY <i>RAC</i> 8/23/95 | AMP Incorporated 140 Fourth Avenue Waltham, MA 02451-7599 |
| These drawings and specifications are the property of M/A-COM Interconnect Division and shall not be reproduced or copied or used in whole or in part as the basis for the manufacture or sale of item(s) without written permission. | USE ASSY PROCEDURE | TITLE OSMP SOLDER-IN SHROUD SMOOTH BORE |
| | NO. A.P. N/A | SIZE B CODE IDENT NO. 26805 2998-5056-94 REV 011 |
| | | SCALE 20=1 SHEET 1 OF 1 |

CUSTOMER DRAWING

AMP PART # 1056752-1
SHEET 1 OF 1 REV A