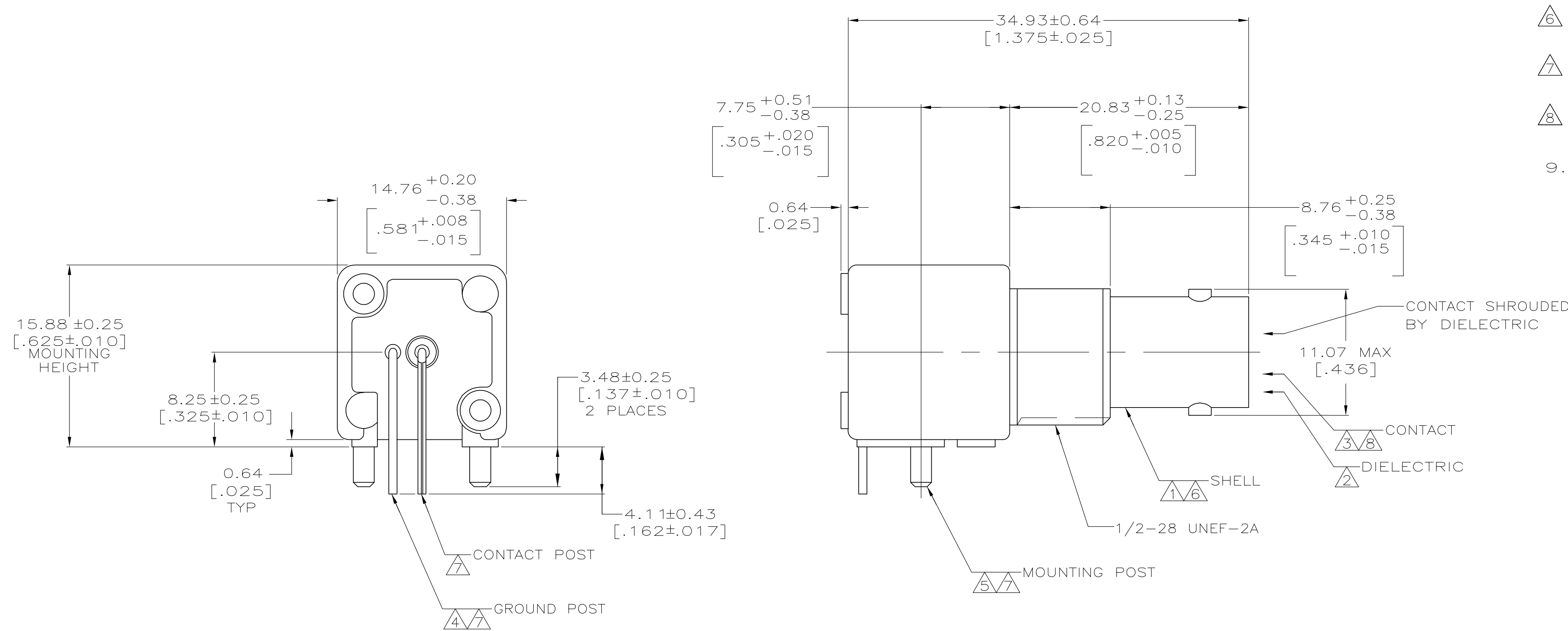
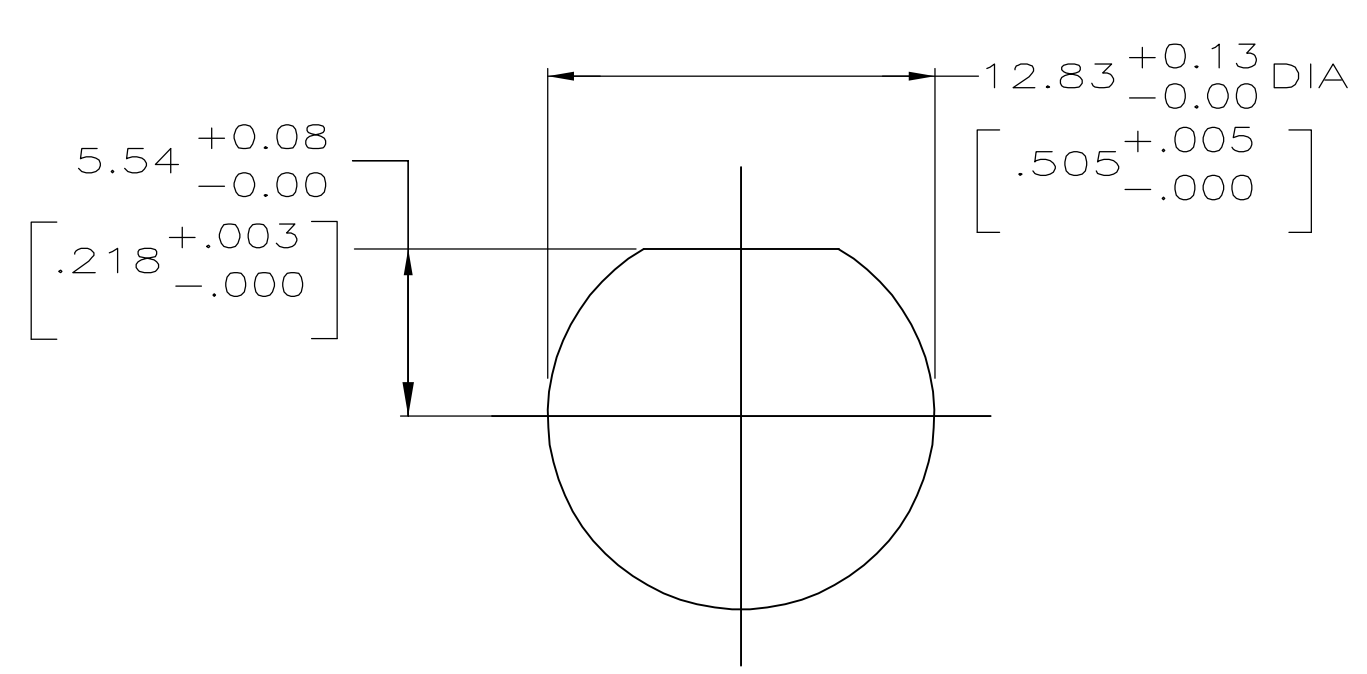


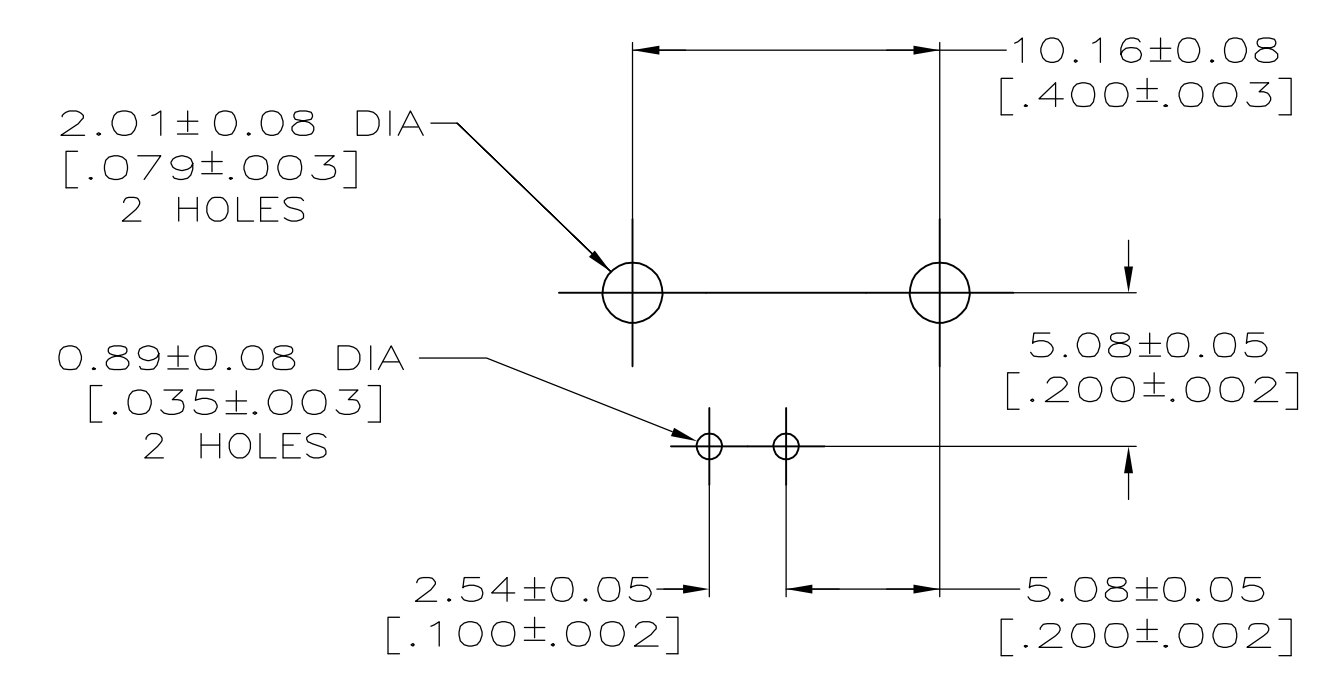
LOC		DIST		REVISIONS			
P	LTR	DESCRIPTION	DATE	DWN	APVD		
A		REVISED PER EC 0514-0150-05	04OCT2005	REH	JL		



- 1 ZINC PER QQ-Z-363.
- 2 POLYMETHYLPENTENE, GENERAL PURPOSE.
- 3 PHOSPHOR BRONZE PER QQ-B-750.
- 4 BRASS PER ASTM-B-453.
- 5 BRASS PER ASTM-B-16.
- 6 NICKEL PLATE PER QQ-N-290, 3.81 μm [.000150] MINIMUM THICK.
- 7 TIN PLATE PER ASTM-B-545, 3.81 μm [.000150] MINIMUM THICK.
- 8 GOLD PLATE PER ASTM-B-488, 0.76 μm [.000030] MINIMUM THICK.
- 9. SEE INSTRUCTION SHEET 408-2769.



RECOMMENDED PANEL CUTOUT



PCB CONFIGURATION

5414409-1
PART NUMBER

THIS DRAWING IS A CONTROLLED DOCUMENT.		DWN J. ALCORTA - 26APR2005	Tyco Electronics Corporation Harrisburg, PA 17105-3608	
DIMENSIONS: mm [INCHES]		CHK J. HAVENER - 26APR2005	APVD J. LIPPERT - 26APR2005	
TOLERANCES UNLESS OTHERWISE SPECIFIED:		NAME		
0 PLC ± -		JACK, RIGHT ANGLE, PCB		
1 PLC ± -		75 OHM, SERIES BNC		
2 PLC ± 0.20 [.008]		PRODUCT SPEC 108-12078		
3 PLC ± -		APPLICATION SPEC		
4 PLC ± -		SIZE CAGE CODE DRAWING NO		
ANGLES ± -		A1 00779 5414409		
FINISH SEE NOTES 6 - 8		RESTRICTED TO		
MATERIAL SEE NOTES 1 - 5		WEIGHT -		
		CUSTOMER DRAWING SCALE 4:1 SHEET 1 of 1 REV A		