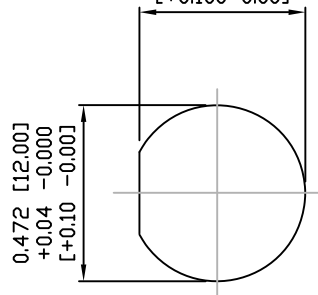
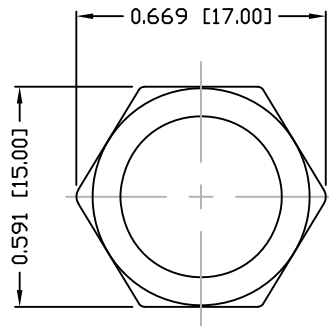


DESCRIPTION: M12 MALE - PANEL MOUNT (REAR) - SOLDER CUP - 3 POS.

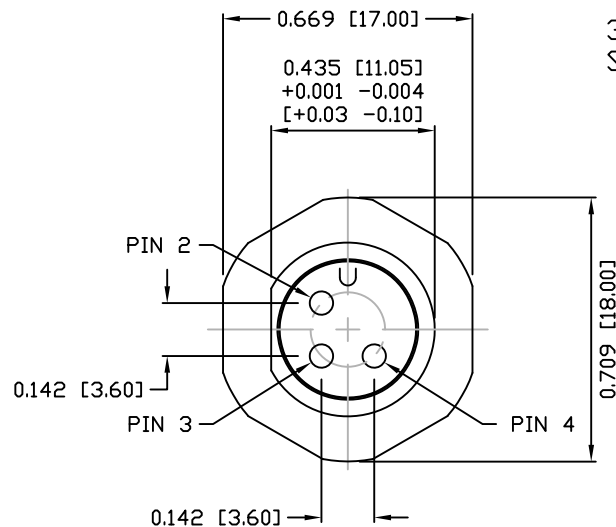
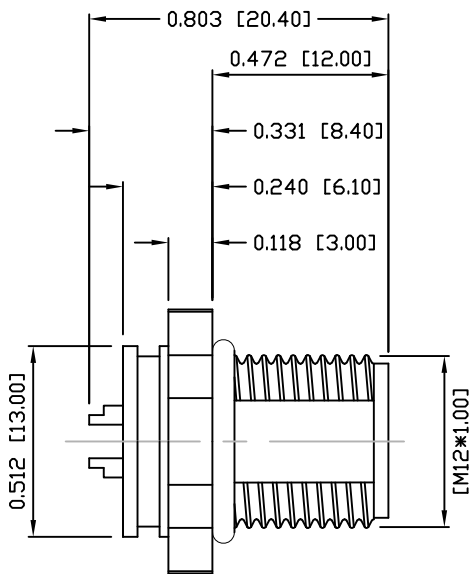
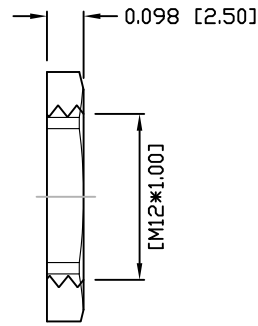
0.445 [11.30]  
+0.004 -0.000  
[+0.100-0.00]



PANEL CUTOUT



NUT



NOTE:

MATERIAL

HOUSING: PBT UL94V-0, BLACK  
CONTACT: BRASS  
NUT: BRASS  
SHELL: BRASS  
O-RING: EPDM, BLACK

FINISH

CONTACT: GOLD PLATED  
OVER 50u" NICKEL  
NUT: NICKEL PLATED  
60u" TO 100u" OVER ALL  
SHELL: NICKEL PLATED  
60u" TO 100u" OVER ALL

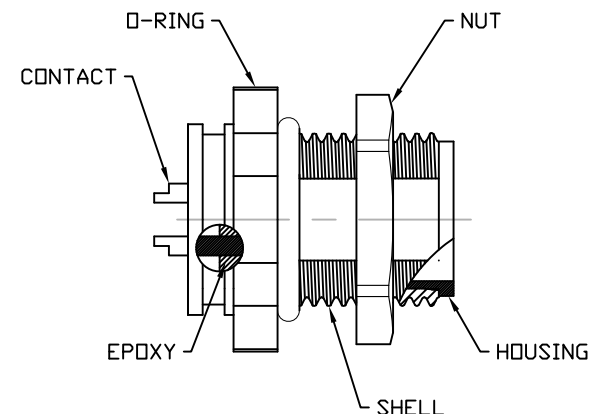
ELECTRICAL

RATED CURRENT: 4A  
RATED VOLTAGE: 250V  
INSULATION RESISTANCE: 100 MΩhms MIN.  
CONTACT RESISTANCE: 10 mΩhms MAX.  
WATER PROOF: IP67  
ENVIRONMENT  
OPERATION TEMPERATURE: -40°C TO +85°C  
MAX WIRE AWG: 22

859-003-103R00Y

3 = COPPER ALLOY/NICKEL SHELL & NUT  
S = STAINLESS STEEL SHELL & NUT

1 = GOLD FLASH  
4 = 10u" GOLD



RoHS COMPLIANT

UNITS = INCHES [MM]

DO NOT SCALE FROM DRAWING



THESE DRAWINGS AND SPECIFICATIONS ARE THE PROPERTY OF NorComp AND SHALL NOT BE REPRODUCED, COPIED OR USED AS THE BASIS FOR THE MANUFACTURE OR SALE OF APPARATUS WITHOUT WRITTEN PERMISSION.

DRAWN:

M. SIGMON

DATE:

03-07-16

NorComp

SCALE: NTS

SHEET 1 OF 1

REV 3

DWG NO.

859-003-103R00Y