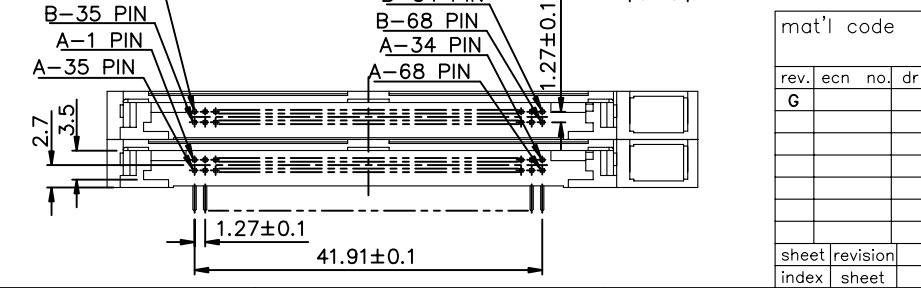
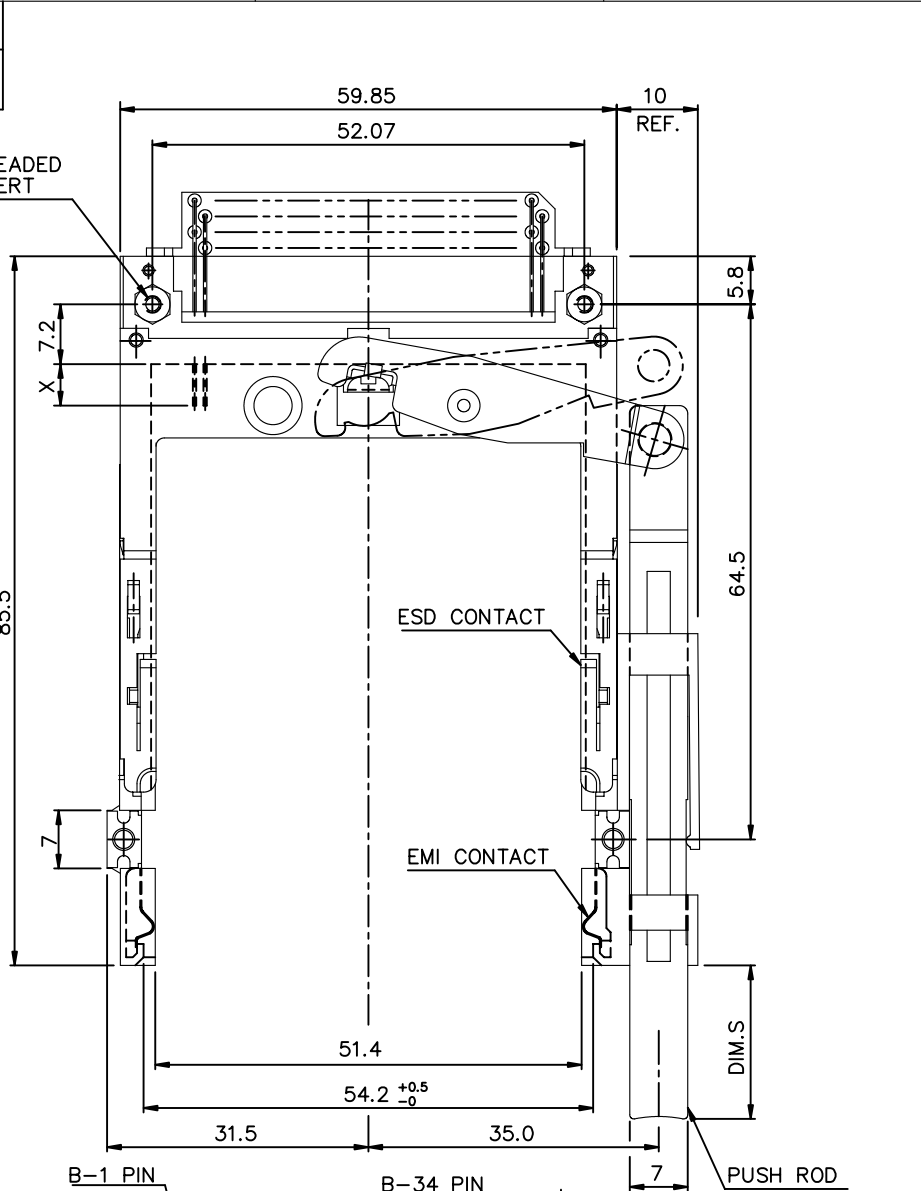
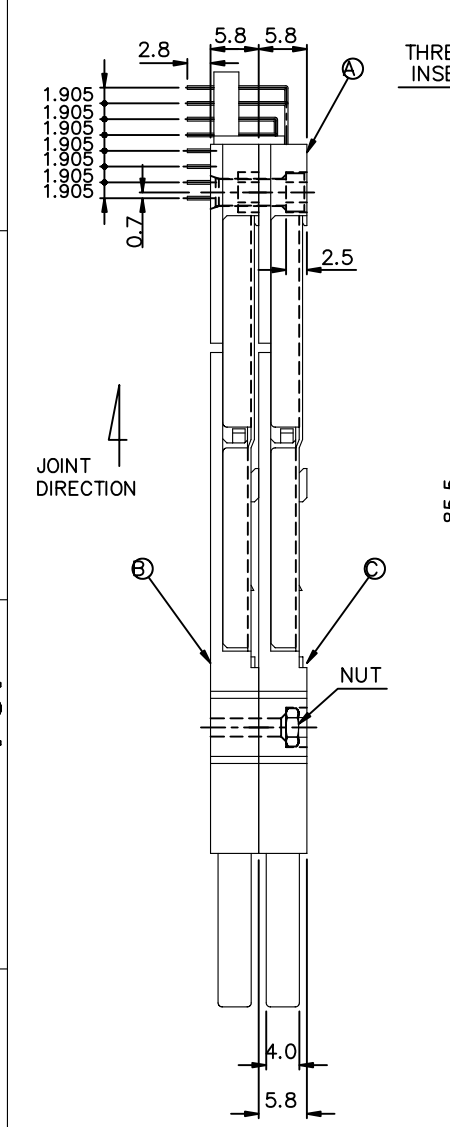


Tous droits strictement réservés. Reproduction ou communication a des tiers int sous quelque forme que ce soit sans autorisation écrite du propriétaire. Property of c BERG ELECTRONICS. Droits de reproduction BERG ELECTRONICS by FCI
 All rights strictly reserved. Reproduction or issue to third parties in any for whatever is not permitted without written authority from the proprietor. Property of c BERG ELECTRONICS. Copyright BERG ELECTRONICS by FCI

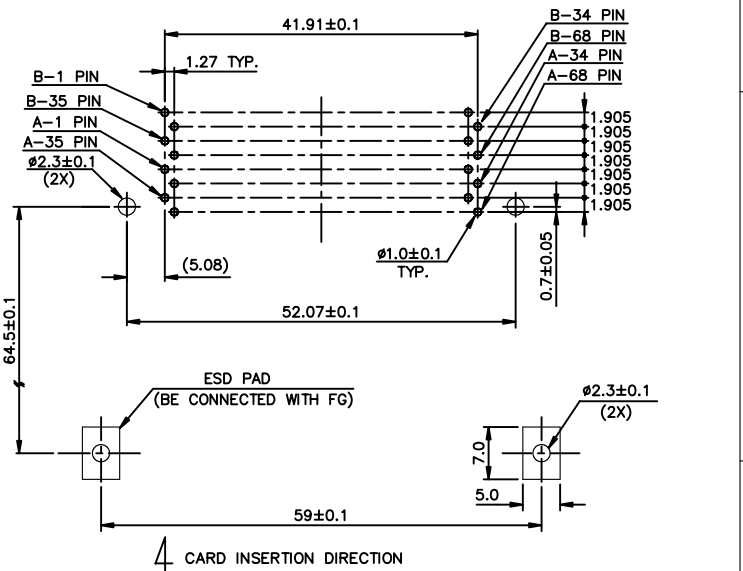
1 | PRODUCT NO.
 61150-200**/200**LF
 SEE TABLE I



- NOTES:
- EJECT FORCE : 3.5 Kg MAX.
 - EJECT TRAVEL: 8.0mm
 - MATERIAL
 - PART A (HEADER ASS'Y)
 PLASTIC : HOUSING ...LCP UL94V-0 BLACK
 : LOCATOR ...CF 6/6 NYLON UL94-V0 BLACK
 PIN : PHOSPHOR BRONZE
 - PART B AND C (EJECT MECHANISM ASS'Y)
 PLASTIC : GUIDE: POLYPHTHARAMID UL94V-0 BLACK
 : PUSH ROD: POLYPHTHARAMID UL94V-0 BLACK
 PLATE : STAINLESS
 EMI CONTACT: PHOSPHOR BRONZE
 - FINISH (PIN)
 UNDER PLATING : 0.5µm MIN. Ni
 CONTACT AREA : 0.1µm MIN. GOLD OVER 0.5µm MIN. Pd-Ni
 SOLDER TAIL (TIN LEAD OPTION): 2.5µm MIN. Sn-Pb
 SOLDER TAIL (LEAD FREE OPTION): 2.5µm MIN. PURE TIN
 - DIM "X"

| | | |
|----------|---------|------------------|
| 4.25±0.1 | 3.5±0.1 | 5.0±0.1 |
| OTHERS | 36,67 | 1,17,34,35,51,68 |
 - IF LEAD FREE P/N THE HOUSING WILL WITHSTAND EXPOSURE TO 260°C PEAK TEMPERATURE FOR 10 SECONDS IN A WAVE SOLDER APPLICATION WITH A 1.00MM MINIMUM THICK CIRCUIT BOARD.
 - LEAD FREE P/N PACKAGING MEETS GS-14-920 SPECIFICATION
 - TABLE I

| ** | DIM.S | PUSH ROD COLOR |
|----|-------|----------------|
| CA | 13.0 | BLACK |
| CH | 13.0 | NATURAL |
| DA | 15.2 | BLACK |
| DH | 15.2 | NATURAL |
| EA | 18.5 | BLACK |
| EH | 18.5 | NATURAL |
| FA | 21.0 | BLACK |
| FH | 21.0 | NATURAL |



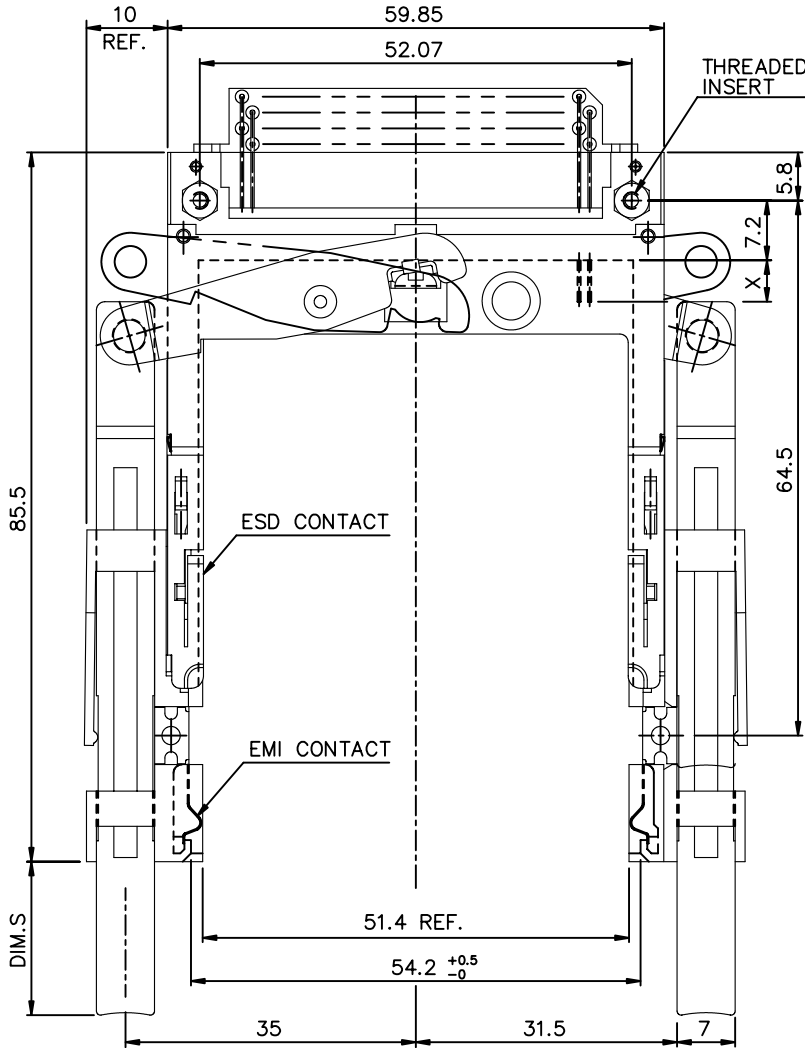
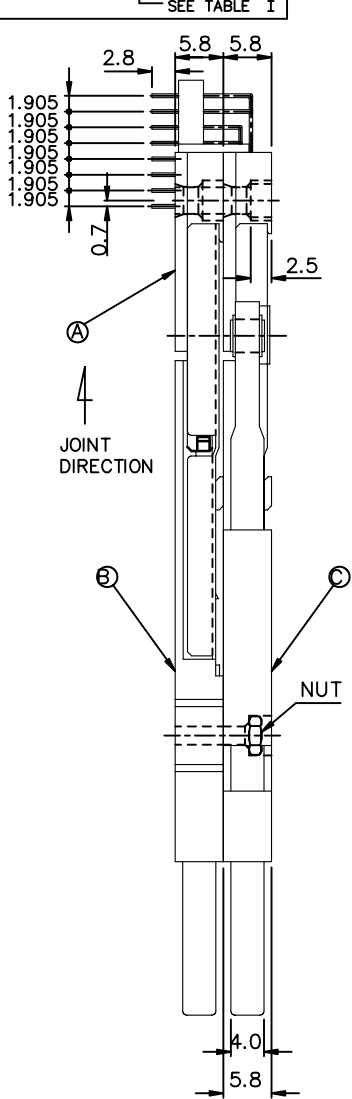
USE THE FOLLOWING P/N FOR OFFICIAL ORDERING

| | | |
|---|------------------|---------------------------|
| © | EJECT MECH ASS'Y | 94307-00** SEE TABLE I |
| Ⓑ | EJECT MECH ASS'Y | 88644-00** SEE TABLE I |
| Ⓐ | HDR ASS'Y | 92821-000/000LF |
| | DESCRIPTION | P/N |

| mat'l code | | tolerance unless otherwise specified | | CUSTOMER | | FCI | |
|------------|----------|--------------------------------------|------|----------|----------------------|------------|--|
| rev. | ecn no. | dr | date | linear | ±0.30 | projection | title |
| G | | | | angles | ±2° | ⊕ | 88P DOUBLE EJECTOR HEADER ASS'Y FOR TYPE 1/2/3 |
| | | | | dr | WENDY CHEN 01/10/96 | unit | product family PCMCIA |
| | | | | enr | JOSEPH HSIA 01/10/96 | mm/inch | code |
| | | | | chr | JOSEPH HSIA 01/10/96 | scale | TWN |
| | | | | appd | JENN TSAO 01/10/96 | 1.5:1 | sheet |
| sheet | revision | | | | | A3 | 61150 |
| index | sheet | | | | | | 2 OF |

PRODUCT NO.
61150-100**/100**LF

SEE TABLE I



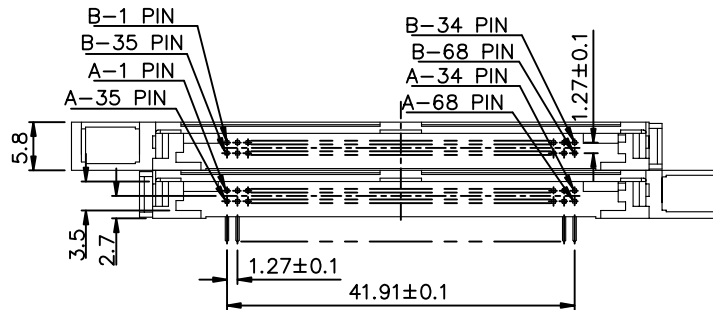
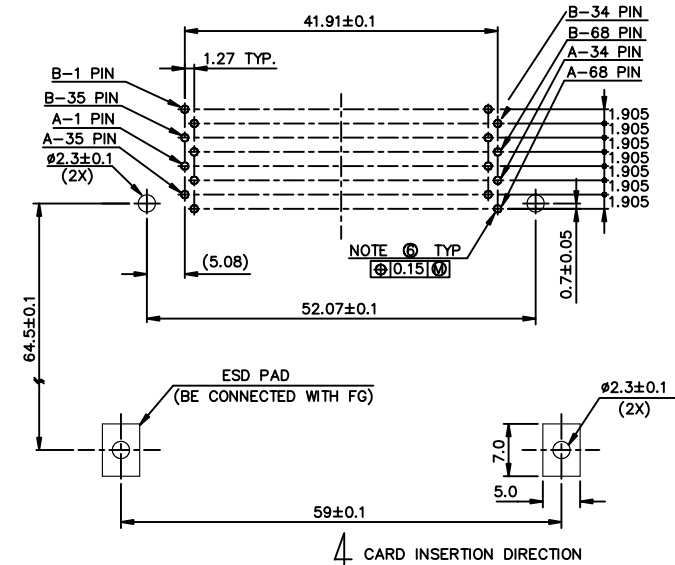
NOTES:

- EJECT FORCE : 3.5 Kg MAX.
- EJECT TRAVEL: 8.0mm
- MATERIAL
- PART A (HEADER ASS'Y)
PLASTIC : HOUSING ...LCP UL94V-0 BLACK
LOCATOR ...G.F. 6/6 NYLON UL94-VO BLACK
PIN : PHOSPHOR BRONZE
- PART B AND C (EJECT MECHANISM ASS'Y)
PLASTIC : GUIDE: POLYPHTHARAMID UL94V-0 BLACK
PUSH ROD: POLYPHTHARAMID UL94V-0 BLACK
PLATE : STAINLESS
EMI CONTACT: PHOSPHOR BRONZE
- FINISH (PIN)
UNDER PLATING : 0.5µm MIN. NI
CONTACT AREA : 0.1µm MIN. GOLD OVER 0.5µm MIN. Pd-NI
SOLDER TAIL (TIN LEAD OPTION): 2.5µm MIN. Sn-Pb
SOLDER TAIL (LEAD FREE OPTION): 2.5µm MIN. PURE TIN
- DIM "X"
- RECOMMENDED DIAMETER IS Ø1.0, FOR PROCESSES USING PASTE REFLOW. HOLE MAYBE AS SMALL AS Ø0.79.
- IF LEAD FREE P/N, THE HOUSING WILL WITHSTAND EXPOSURE TO 260°C PEAK TEMPERATURE FOR 10 SECONDS IN A WAVE SOLDER APPLICATION WITH A 1.00MM MINIMUM THICK CIRCUIT BOARD.
- LEAD FREE P/N PACKAGING MEETS GS-14-920 SPECIFICATION

| | | |
|----------|---------|------------------|
| 4.25±0.1 | 3.5±0.1 | 5.0±0.1 |
| OTHERS | 36,67 | 1,17,34,35,51,68 |

9. TABLE I

| ** DIM. | SIPUSH ROD COLOR |
|---------|------------------|
| CA 13.0 | BLACK |
| CH 13.0 | NATURAL |
| DA 15.2 | BLACK |
| DH 15.2 | NATURAL |
| EA 18.5 | BLACK |
| EH 18.5 | NATURAL |
| FA 21.0 | BLACK |
| FH 21.0 | NATURAL |



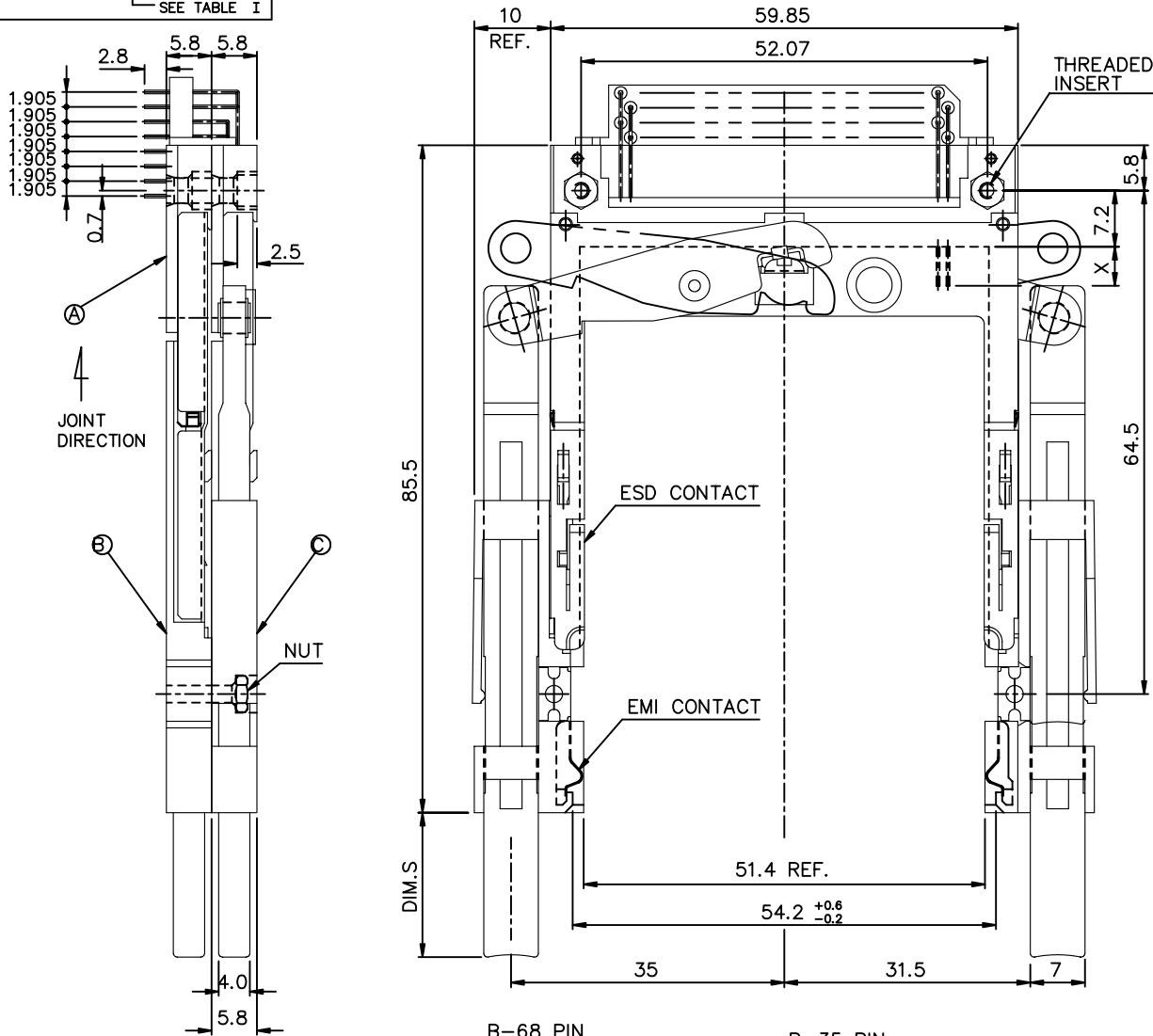
USE THE FOLLOWING P/N FOR OFFICIAL ORDERING

| | | |
|---|------------------|---------------------------|
| Ⓒ | EJECT MECH ASS'Y | 94307-10** SEE TABLE I |
| Ⓑ | EJECT MECH ASS'Y | 88644-00** SEE TABLE I |
| Ⓐ | HDR ASS'Y | 92821-000/000LF |
| | DESCRIPTION | P/N |

| | | | | | | | |
|------------|----------|--------------------------------------|-------------|---------------|-------|------------------------|--|
| mat'l code | | tolerance unless otherwise specified | | CUSTOMER COPY | | www.fciconnect.com | |
| rev. | ecn no. | dr | date | linear | ±0.30 | projection | title |
| D | | | | angles | ± 2° | | 88P DOUBLE EJECTOR HEADER ASS'Y FOR TYPE 1/2/3 |
| | | dr | WENDY CHEN | 09/12/96 | unit | mm/inch | product family PCMCIA |
| | | enr | JOSEPH HSIA | 09/12/96 | scale | 1.5:1 | code TWN |
| | | chr | JOSEPH HSIA | 09/12/96 | scale | 1.5:1 | sheet 3 OF |
| | | appd | JENN TSAO | 09/12/96 | scale | 1.5:1 | 61150 |
| sheet | revision | | | | | | |
| index | sheet | | | | | | |

PRODUCT NO.
61150-600**/600**LF

SEE TABLE I



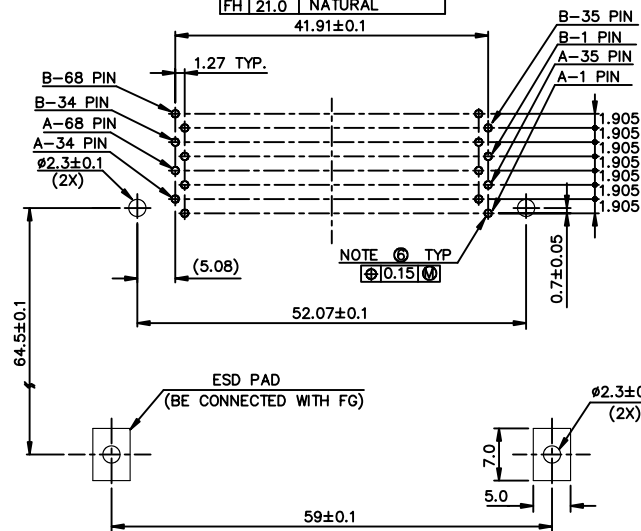
NOTES:

- EJECT FORCE : 3.5 Kg MAX.
- EJECT TRAVEL: 8.0mm
- MATERIAL
 - PART (A) (HEADER ASS'Y)
PLASTIC : HOUSING ...LCP UL94V-0 BLACK
LOCATOR ...G.F. 6/6 NYLON UL94-VO BLACK
PIN : COPPER ALLOY
 - PART (B) AND (C) (EJECT MECHANISM ASS'Y)
PLASTIC : GUIDE: POLYPHTHARAMID UL94V-0 BLACK
PUSH ROD: POLYPHTHARAMID UL94V-0 BLACK
PLATE : STAINLESS
- FINISH (PIN)
EMI CONTACT: PHOSPHOR BRONZE
UNDER PLATING : 0.5µm MIN. Ni
CONTACT AREA : 0.1µm MIN. GOLD OVER 0.5µm MIN. Pd-Ni
SOLDER TAIL(TIN LEAD OPTION): 2.5µm MIN. Sn-Pb
SOLDER TAIL(LEAD FREE OPTION): 2.5µm MIN. PURE TIN
- DIM "X"

| | | |
|----------|---------|------------------|
| 4.25±0.1 | 3.5±0.1 | 5.0±0.1 |
| OTHERS | 36,67 | 1,17,34,35,51,68 |
- RECOMMENDED DIAMETER IS Ø1.0, FOR PROCESSES USING PASTE REFLOW, HOLE MAYBE AS SMALL AS Ø0.79.
- IF LEAD FREE P.N.THE HOUSING WILL WITHSTAND EXPOSURE TO 260°C PEAK TEMPERATURE FOR 10 SECONDS IN A WAVE SOLDER APPLICATION WITH A 1.00MM MINIMUM THICK CIRCUIT BOARD.
- LEAD FREE P/N PACKAGING MEETS GS-14-920 SPECIFICATION

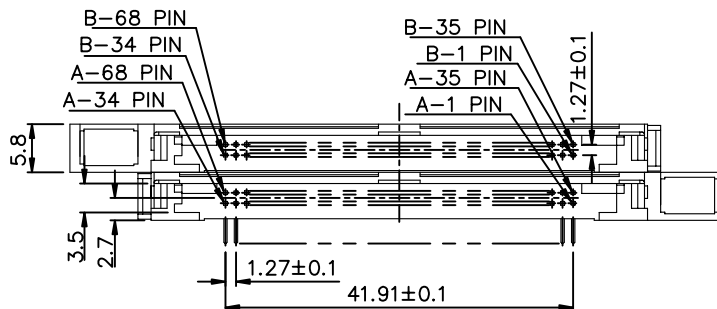
9. TABLE I

| ** DIM.S | PUSH ROD COLOR |
|----------|----------------|
| CA 13.0 | BLACK |
| CH 13.0 | NATURAL |
| DA 15.2 | BLACK |
| DH 15.2 | NATURAL |
| EA 18.5 | BLACK |
| EH 18.5 | NATURAL |
| FA 21.0 | BLACK |
| FH 21.0 | NATURAL |



USE THE FOLLOWING P/N FOR OFFICIAL ORDERING

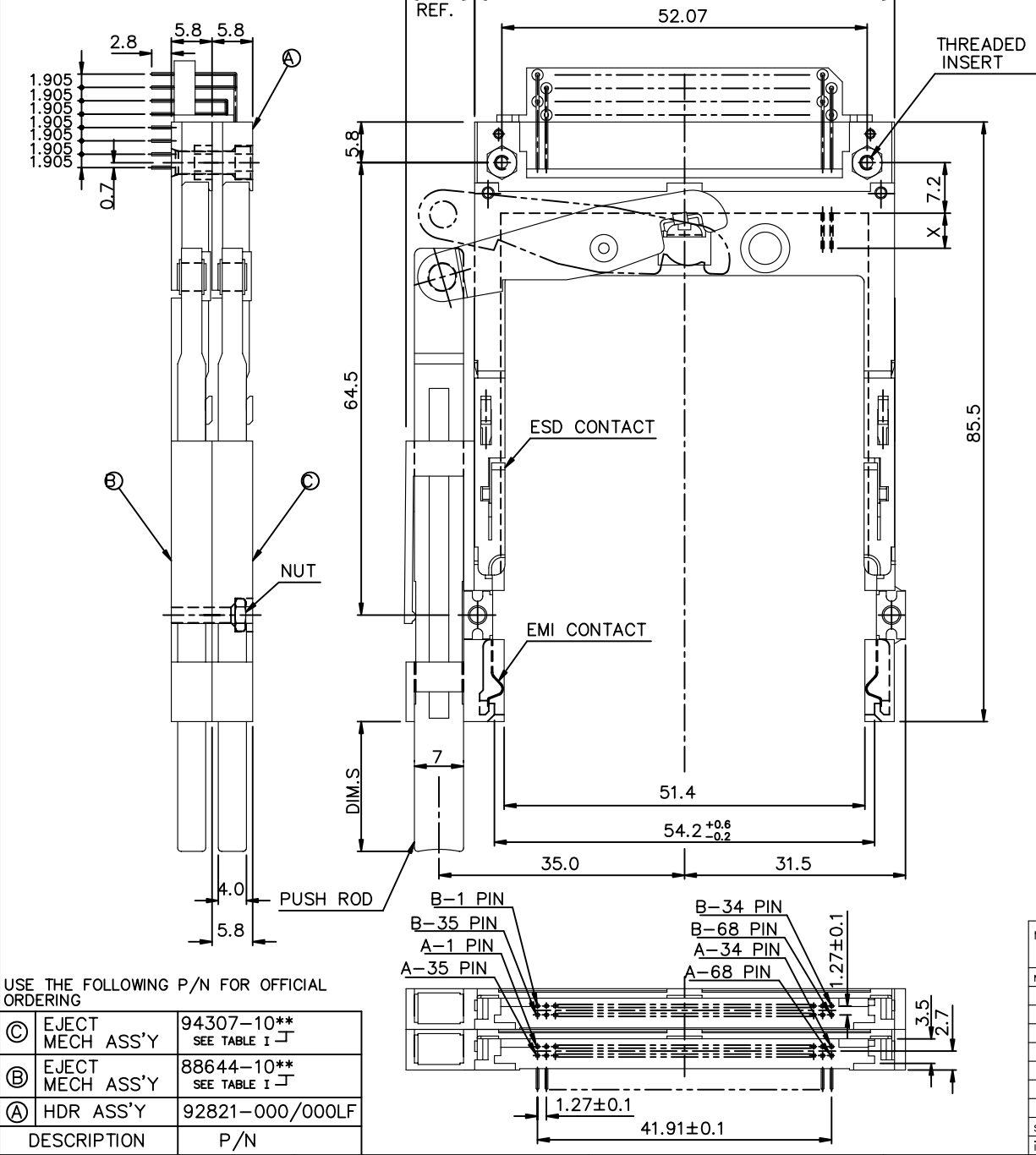
| | | |
|-----|------------------|---------------------------|
| (C) | EJECT MECH ASS'Y | 94307-10** SEE TABLE I |
| (B) | EJECT MECH ASS'Y | 88644-00** SEE TABLE I |
| (A) | HDR ASS'Y | 92821-500/500LF |
| | DESCRIPTION | P/N |



| mat'l code | | tolerance unless otherwise specified | | CUSTOMER COPY | | ELECTRONICS | |
|------------|----------|--------------------------------------|------|---------------|----------------------|-------------|--|
| rev. | ecn no. | dr | date | linear | ±0.30 | projection | FCI |
| G | | | | linear | | title | 88P DOUBLE EJECTOR HEADER ASS'Y FOR TYPE 1/2/3 |
| | | | | angles | ± 2° | unit | product family : PCMCIA |
| | | | | dr | WENDY CHEN 12/20/00 | mm/inch | code |
| | | | | enr | LEIF SHEN 12/20/00 | scale | TWN |
| | | | | chr | JOSEPH HSIA 12/20/00 | 1.5:1 | sheet |
| | | | | appd | JOSEPH HSIA 12/20/00 | A3 | 4 OF |
| sheet | revision | | | | | | |
| index | sheet | | | | | | |

Tous droits strictement réservés. Reproduction ou communication, a des tiers int
 sous quelque forme que ce soit sans autorisation écrite du propriétaire.
 Property of c BERG ELECTRONICS.
 Droits de reproduction BERG ELECTRONICS by
 FCI
 All rights strictly reserved. Reproduction or issue to third parties in any for
 whatever is not permitted without written authority from the proprietor.
 Property of c BERG ELECTRONICS.
 Copyright BERG ELECTRONICS by
 FCI

| | |
|---------------------|-------------|
| PRODUCT NO. | |
| 61150-300**/300**LF | SEE TABLE I |

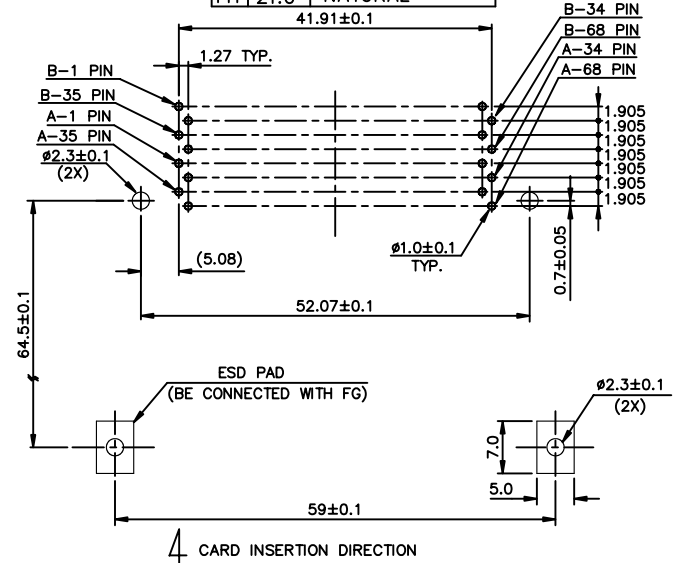


- NOTES:
- EJECT FORCE : 3.5 Kg MAX.
 - EJECT TRAVEL: 8.0mm
 - MATERIAL
 - PART (A) (HEADER ASS'Y)
PLASTIC : HOUSING ...LCP UL94V-0 BLACK
LOCATOR ...G.F. 6/6 NYLON UL94-V0 BLACK
 - PIN (B) AND (C) (EJECT MECHANISM ASS'Y)
PLASTIC : GUIDE: POLYPHTHARAMID UL94V-0 BLACK
PUSH ROD: POLYPHTHARAMID UL94V-0 BLACK
 - PLATE : STAINLESS
EMI CONTACT: PHOSPHOR BRONZE
 - FINISH (PIN)
 - UNDER PLATING : 0.5µm MIN. NI
CONTACT AREA : 0.1µm MIN. GOLD OVER 0.5µm MIN. Pd-Ni
 - SOLDER TAIL (TIN LEAD OPTION): 2.5µm MIN. Sn-Pb
 - SOLDER TAIL (LEAD FREE OPTION): 2.5µm MIN. PURE TIN
 - DIM "X"

| | | |
|----------|---------|------------------|
| 4.25±0.1 | 3.5±0.1 | 5.0±0.1 |
| OTHERS | 36,67 | 1,17,34,35,51,68 |
 - IF LEAD FREE P.N. THE HOUSING WILL WITHSTAND EXPOSURE TO 260°C PEAK TEMPERATURE FOR 10 SECONDS IN A WAVE SOLDER APPLICATION WITH A 1.00MM MINIMUM THICK CIRCUIT BOARD.
 - LEAD FREE P/N PACKAGING MEETS GS-14-920 SPECIFICATION

8. TABLE I

| ** | DIM.S | PUSH ROD COLOR |
|----|-------|----------------|
| CA | 13.0 | BLACK |
| CH | 13.0 | NATURAL |
| DA | 15.2 | BLACK |
| DH | 15.2 | NATURAL |
| EA | 18.5 | BLACK |
| EH | 18.5 | NATURAL |
| FA | 21.0 | BLACK |
| FH | 21.0 | NATURAL |



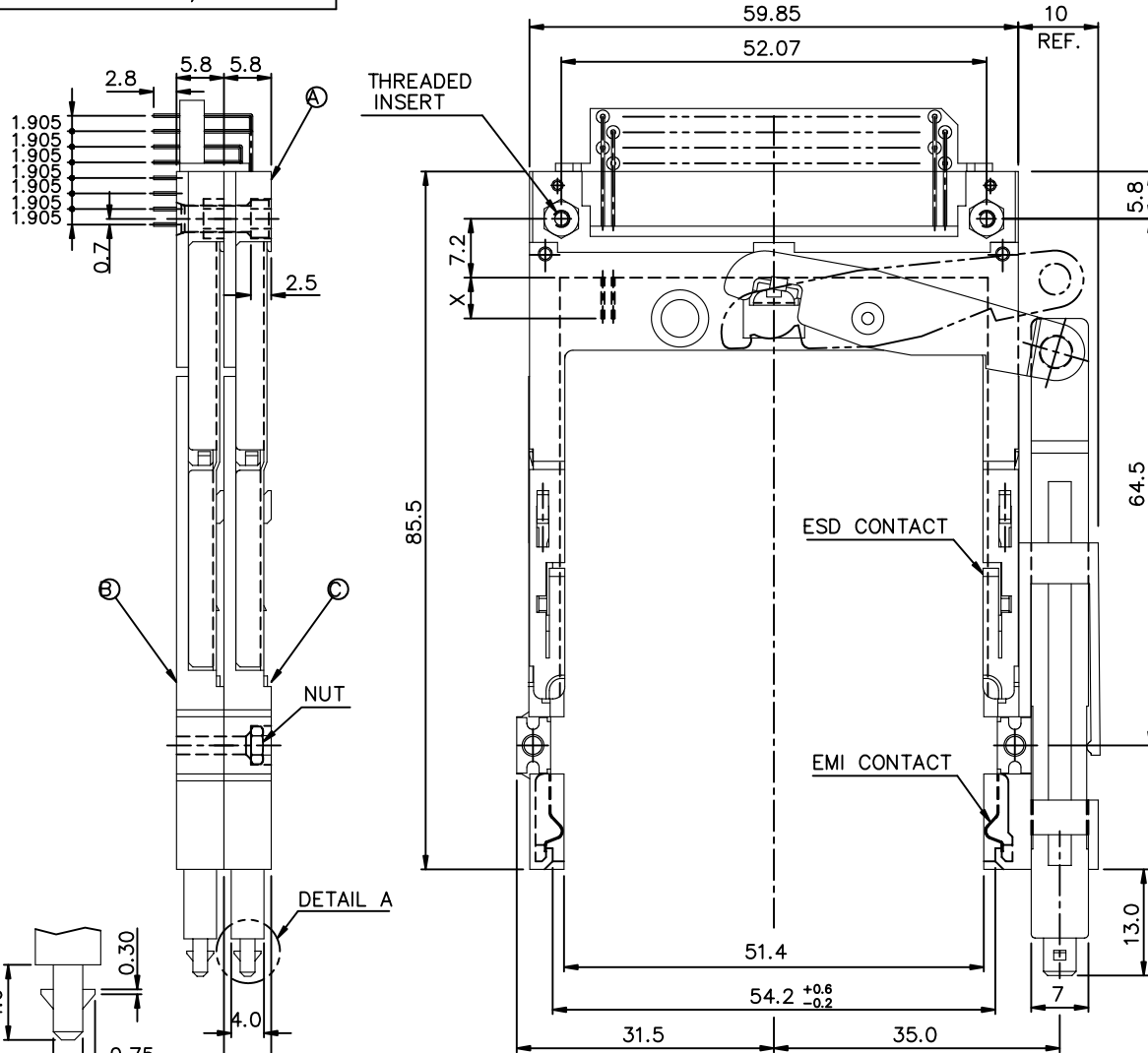
USE THE FOLLOWING P/N FOR OFFICIAL ORDERING

| | | |
|-----|------------------|---------------------------|
| (C) | EJECT MECH ASS'Y | 94307-10** SEE TABLE I |
| (B) | EJECT MECH ASS'Y | 88644-10** SEE TABLE I |
| (A) | HDR ASS'Y | 92821-000/000LF |
| | DESCRIPTION | P/N |

| | | | | |
|----------------------|--------------------------------------|---------------|--|------------|
| mat'l code | tolerance unless otherwise specified | CUSTOMER COPY | FCI ELECTRONICS | |
| rev. ecn no. dr date | linear ±0.30 | projection | title | |
| G | angles ±2° | unit | 68P DOUBLE EJECTOR HEADER ASS'Y FOR TYPE 1/2/3 | |
| | dr WENDY CHEN 03/05/01 | mm/inch | product family : PCMCIA | code T'WN |
| | enr MINERVA WANG 03/05/01 | scale | size dwg no. | sheet 5 of |
| | chr JOSEPH HSIA 03/05/01 | 1.5:1 | A3 | 61150 |
| | appd JOSEPH HSIA 03/05/01 | | | |
| sheet revision | | | | |
| index sheet | | | | |

PRODUCT NO.

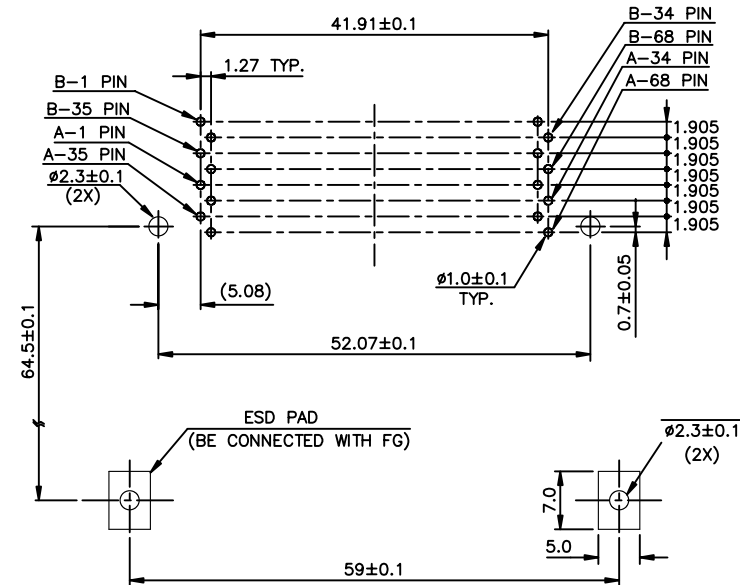
61150-200GA/200GALF



NOTES:

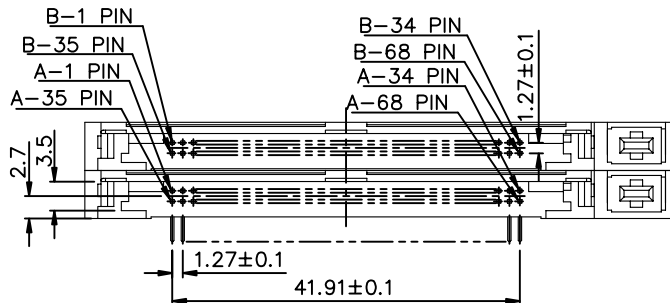
- EJECT FORCE : 3.5 Kg MAX.
- EJECT TRAVEL: 8.0mm
- MATERIAL
 - PART A (HEADER ASS'Y)
PLASTIC : HOUSING ...LCP UL94V-0 BLACK
: LOCATOR ...G.F. 6/6 NYLON UL94-V0 BLACK
PIN : COPPER ALLOY
 - PART B AND C (EJECT MECHANISM ASS'Y)
PLASTIC : GUIDE: POLYPHTHAMID UL94V-0 BLACK
: PUSH ROD: POLYPHTHAMID UL94V-0 BLACK
PLATE : STAINLESS
EMI CONTACT: PHOSPHOR BRONZE
- FINISH (PIN)
UNDER PLATING : 0.5µm MIN. Ni
CONTACT AREA : 0.1µm MIN. GOLD OVER 0.5µm MIN. Pd-Ni
SOLDER TAIL (TIN LEAD OPTION): 2.5µm MIN. Sn-Pb
SOLDER TAIL (LEAD FREE OPTION): 2.5µm MIN. PURE TIN
- DIM "X"

| | | |
|----------|---------|------------------|
| 4.25±0.1 | 3.5±0.1 | 5.0±0.1 |
| OTHERS | 36,67 | 1,17,34,35,51,68 |
- IF LEAD FREE P/N, THE HOUSING WILL WITHSTAND EXPOSURE TO 260°C PEAK TEMPERATURE FOR 10 SECONDS IN A WAVE SOLDER APPLICATION WITH A 1.00MM MINIMUM THICK CIRCUIT BOARD.
- LEAD FREE P/N PACKAGING MEETS GS-14-920 SPECIFICATION



USE THE FOLLOWING P/N FOR OFFICIAL ORDERING

| DESCRIPTION | P/N |
|--------------------|-----------------|
| Ⓒ EJECT MECH ASS'Y | 94307-00GA |
| Ⓓ EJECT MECH ASS'Y | 88644-00GA |
| Ⓐ HDR ASS'Y | 92821-000/000LF |



| mat'l code | | tolerance unless otherwise specified | | CUSTOMER COPY | | FCI ELECTRONICS | |
|------------|---------|--------------------------------------|-----------------------|---------------|---------|-----------------|--|
| rev. | ecn no. | dr | date | linear | ±0.30 | projection | title |
| G | | | | angles | ±2' | ⊕ | 68P DOUBLE EJECTOR HEADER ASS'Y FOR TYPE 1/2/3 |
| | | dr | WENDY CHEN 03/14/01 | unit | mm/inch | product family | PCMCIA |
| | | enrg | MINERVA WANG 03/14/01 | scale | 1.5:1 | size | dwg no. |
| | | chr | JOSEPH HSIA 03/14/01 | scale | 1.5:1 | code | 61150 |
| | | appd | JOSEPH HSIA 03/14/01 | sheet | | 6 OF | |

Tous droits strictement réservés. Reproduction ou communication à des tiers sans autorisation écrite du propriétaire. Copyright BERG ELECTRONICS BY

All rights strictly reserved. Reproduction or issue to third parties in any form without written authority from the proprietor. Copyright BERG ELECTRONICS BY