

10 9 8 7 6 5 4 3 2 1

F

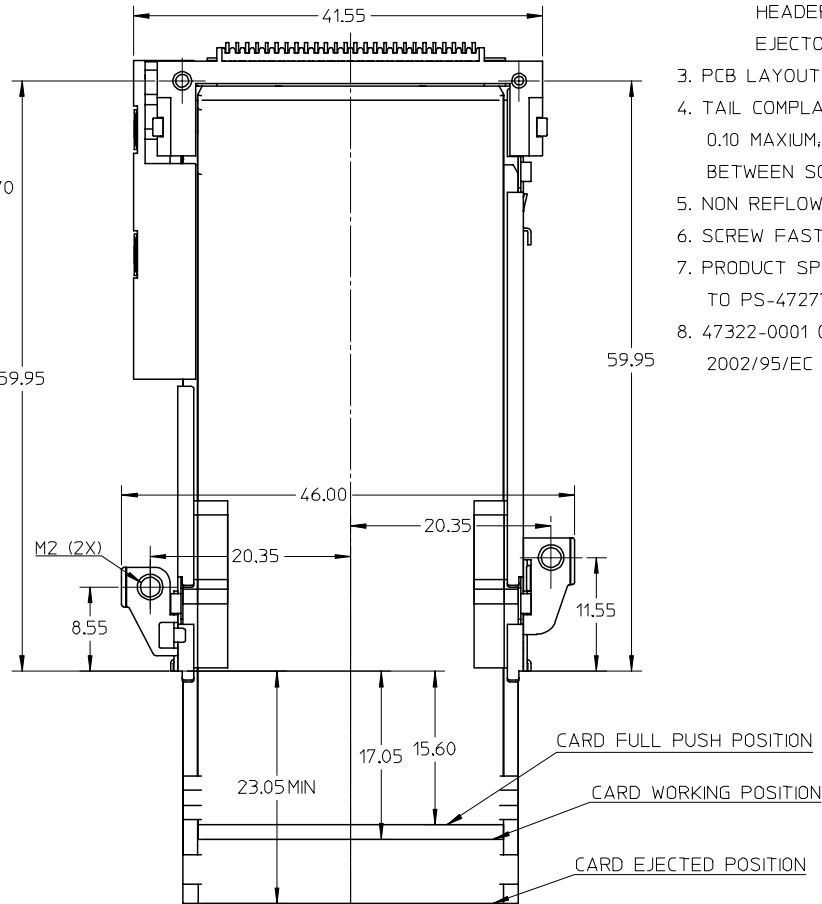
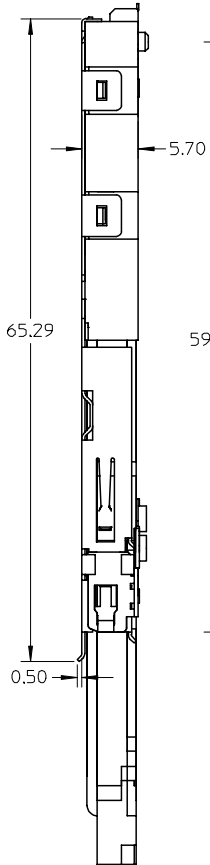
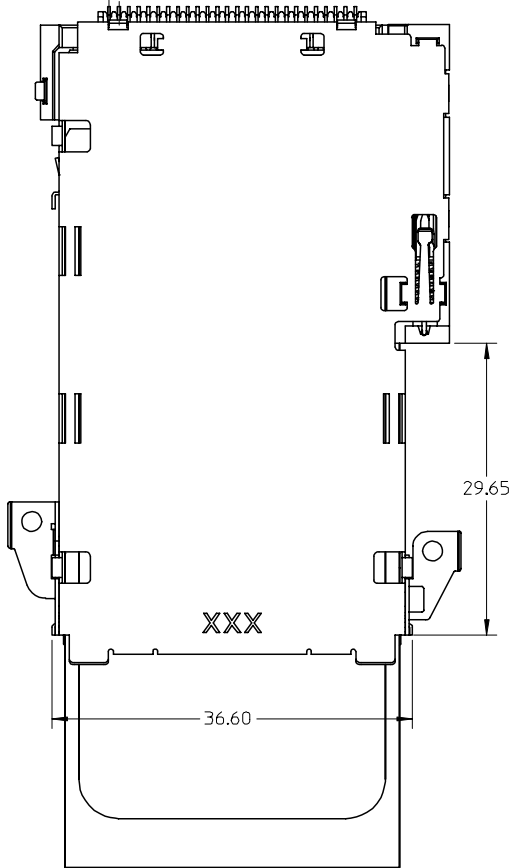
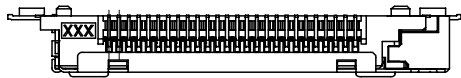
E

D

C

B

A



NOTES:

1. CONNECTOR DESIGN BASED ON EXPRESSCARD STANDARD;
2. COMPONENTS:  
 HEADER: SHEET 2  
 EJECTOR: SHEET 3
3. PCB LAYOUT PLEASE REFER TO SHEET 4,
4. TAIL COMPLANARITY OF HEADER TO BE 0.10 MAXIMUM, TRUE POSITION IS 0.15 MAXIMUM BETWEEN SOLDER TAILS;
5. NON REFLOW PROCESS FOR EJECTOR.
6. SCREW FASTENING TORQUE: 1.0 KGF-CM;
7. PRODUCT SPECIFICATION PLEASE REFER TO PS-47277-001.
8. 47322-0001 COMPLIANT TO RoHS DIRECTIVE 2002/95/EC AND ELV DIRECTIVE 2000/53/EC.

F

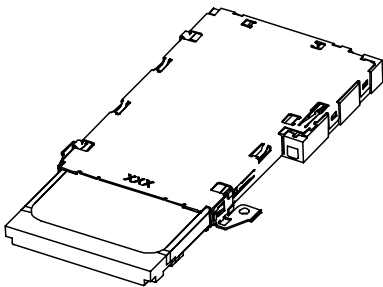
E

D

C

B

A



EC NO: SH2007-0352	2006/11/17	2006/11/22	2006/11/28
DRWN: OCHEN	CHKD: HARVEY	APPR: JNCHEN	
REV	DESCRIPTION		
A1			

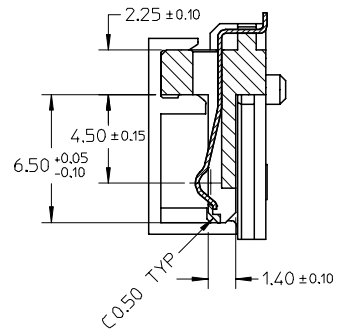
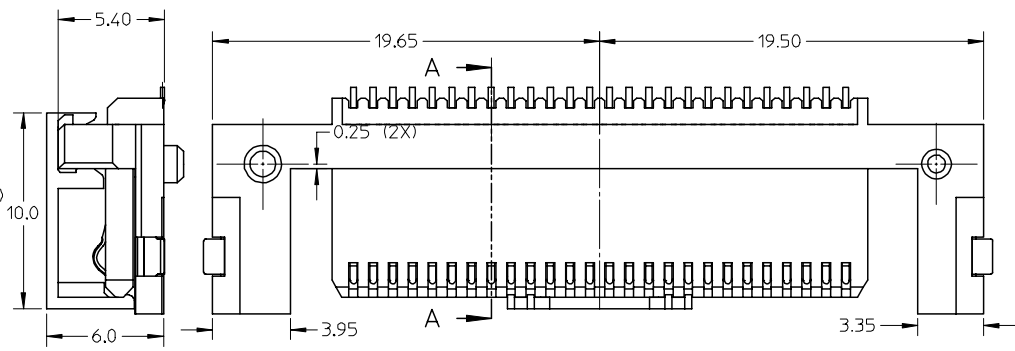
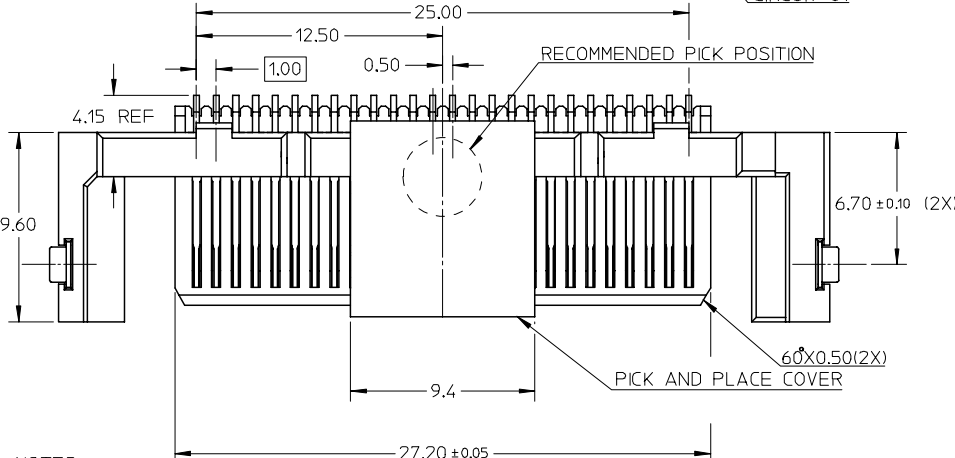
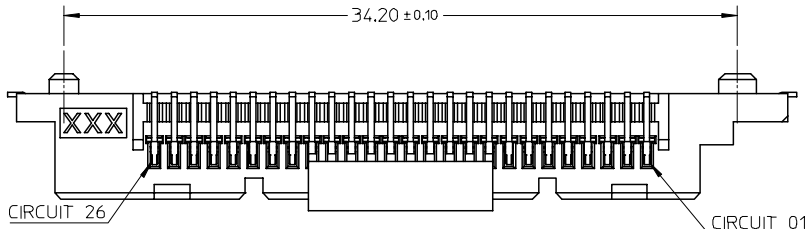
QUALITY SYMBOLS	▽=0	▽C=0
-----------------	-----	------

GENERAL TOLERANCES (UNLESS SPECIFIED)	DIMENSION STYLE MM ONLY	
	mm	INCH
4 PLACES	± ---	± ---
3 PLACES	± ---	± ---
2 PLACES	± 0.25	± ---
1 PLACE	± 0.30	± ---
ANGULAR ± 3 °		
DRAFT WHERE APPLICABLE MUST REMAIN WITHIN DIMENSIONS		

DRAWN BY	DATE	TITLE
R. BIAN	2005/05/20	EXPRESSCARD 34MM BOTTOM MOUNT PUSH-PUSH TYPE
CHECKED BY	DATE	
HARVEY	2006/04/18	
APPROVED BY	DATE	
JENNY	2006/04/18	
MATERIAL NO.	DOCUMENT NO.	SHEET NO.
47322-0001	SD-47322-001	1 OF 4

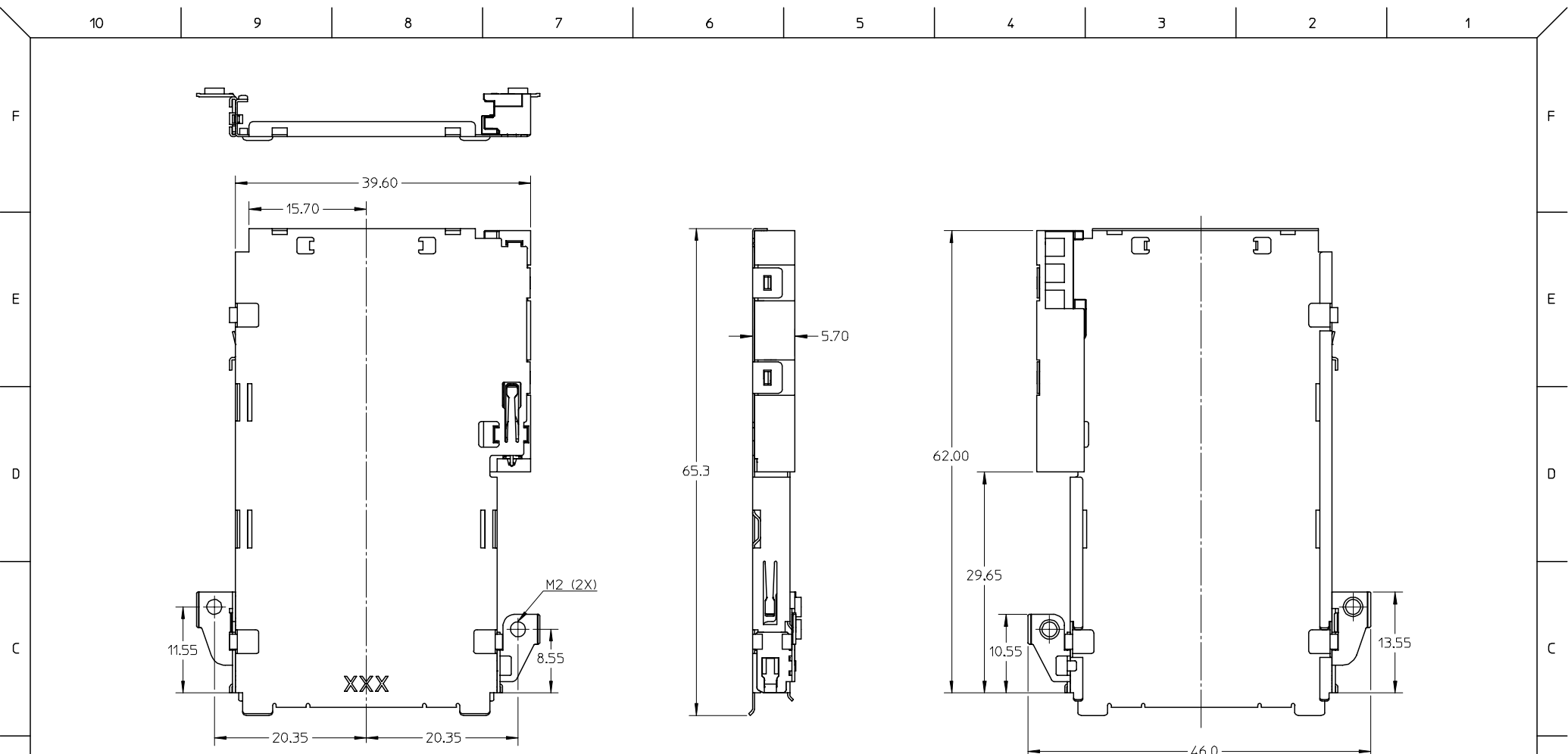
SCALE	DESIGN UNITS	THIRD ANGLE PROJECTION
NTS	METRIC	
MOLEX INCORPORATED		
THIS DRAWING CONTAINS INFORMATION THAT IS PROPRIETARY TO MOLEX INCORPORATED AND SHOULD NOT BE USED WITHOUT WRITTEN PERMISSION		

9 8 7 6 5 4 3 2 1



- NOTES:
- CONNECTOR DESIGN BASED ON EXPRESSCARD STANDARD;
  - MATERIAL:
    - HOUSING: LIQUID CRYSTAL POLYMER,
    - TERMINAL: PHOSPHOR BRONZE,
    - FITTING-NAIL: PHOSPHOR BRONZE,
    - PICK AND PLACE COVER: NYLON 46,
  - FINISH:
    - TERMINAL:
      - UNDERPLATING: Ni OVERALL,
      - SELECTIVE GOLD ON CONTACT AREA,
      - THICKNESS: 15 MICRINCH MINIMUM,
      - SELECTIVE PURE TIN ON SOLDER TAIL AREA,
      - THICKNESS: 40-100 MICRINCH,
  - COPLANARITY AT SOLDER TAIL TO BE 0.10 MAXIMUM;
  - APPLICABLE CARD SLOT PLEASE REFER TO SHEET 3
  - PRODUCT SPECIFICATION PLEASE REFER TO PS-47277-001
  - 47322-0002 COMPLIANT TO RoHS DIRECTIVE 2002/95/EC AND ELV DIRECTIVE 2000/53/EC.

EC NO: SH2007-0352 DRWN: OCHEN 2006/11/17 CHKD: HARVEY 2006/11/22 APPR: JNCHEN 2006/11/28	QUALITY SYMBOLS $\nabla = 0$ $\triangle = 0$	GENERAL TOLERANCES (UNLESS SPECIFIED)		DIMENSION STYLE MM ONLY		SCALE NTS	DESIGN UNITS METRIC	THIRD ANGLE PROJECTION		
			mm	INCH	DRAWN BY R. BIAN	DATE 2005/05/20	TITLE <b>EXPRESSCARD 34MM          BOTTOM MOUNT          PUSH-PUSH TYPE</b>			
		4 PLACES	$\pm$ ---	$\pm$ ---	CHECKED BY HARVEY	DATE 2006/04/18				
		3 PLACES	$\pm$ ---	$\pm$ ---	APPROVED BY JENNY	DATE 2006/04/18	MOLEX INCORPORATED			
	2 PLACES	$\pm 0.25$	$\pm$ ---	MATERIAL NO. 47322-0002	DOCUMENT NO. SD-47322-001	SHEET NO. 2 OF 4				
	1 PLACE	$\pm 0.30$	$\pm$ ---	DRAFT WHERE APPLICABLE MUST REMAIN WITHIN DIMENSIONS		THIS DRAWING CONTAINS INFORMATION THAT IS PROPRIETARY TO MOLEX INCORPORATED AND SHOULD NOT BE USED WITHOUT WRITTEN PERMISSION				
A1	REV									



NOTES:

1. CONNECTOR DESIGN BASED ON EXPRESSCARD STANDARD;
2. THIS SLOT CAN ACCEPT ONLY 34MM EXPRESSCARD;
3. WHEN DELIVERING, THE CAM SLIDER MUST KEEP RELEASE STATUS;
4. PRODUCT SPEC PLEASE REFER TO PS-47277-001;
5. MATERIAL:

COIL SPRING: PIANO STEEL  
 EJECTOR HOUSING: NYLON 46  
 HOUSING SLOT: NYLON 46  
 SHELL: STAINLESS STEEL  
 CAM PIN: STAINLESS STEEL

6. 47322-0003 COMPLIANT TO RoHS DIRECTIVE 2002/95/EC AND ELV DIRECTIVE 2000/53/EC.

EC NO: SH2007-0352 DRWN: OCHEN 2006/11/17 CHKD: HARVEY 2006/11/22 APPR: JNCHEN 2006/11/28	QUALITY SYMBOLS ▽=0 ▽=0	GENERAL TOLERANCES (UNLESS SPECIFIED)		DIMENSION STYLE MM ONLY		SCALE NTS	DESIGN UNITS METRIC	THIRD ANGLE PROJECTION	
		4 PLACES ± --- ± --- 3 PLACES ± --- ± --- 2 PLACES ± 0.25 ± --- 1 PLACE ± 0.30 ± --- ANGULAR ± 3 °	mm INCH ± --- ± --- ± 0.25 ± --- ± 0.30 ± --- ± 3 °	DRAWN BY R. BIAN	DATE 2005/05/20	TITLE EXPRESSCARD 34MM BOTTOM MOUNT PUSH-PUSH TYPE		MOLEX INCORPORATED	
A1	REV	DRAFT WHERE APPLICABLE MUST REMAIN WITHIN DIMENSIONS		APPROVED BY JENNY	DATE 2006/04/18	MATERIAL NO. 47322-0003	DOCUMENT NO. SD-47322-001	SHEET NO. 3 OF 4	

10 9 8 7 6 5 4 3 2 1

F

E

D

C

B

A

F

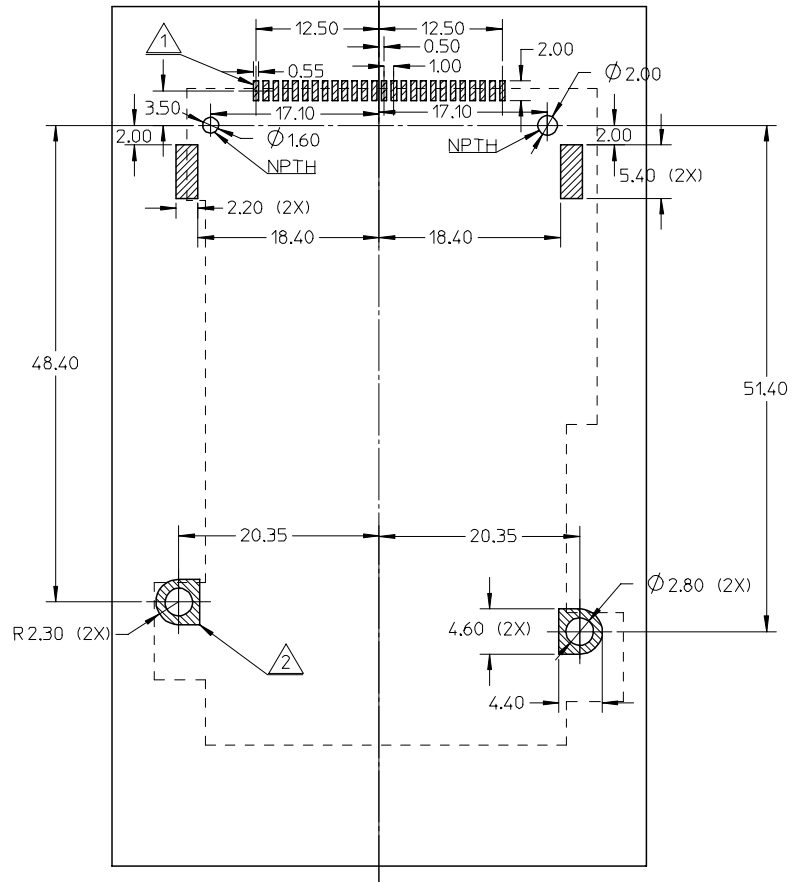
E

D

C

B

A



NOTES:

- 1. SOLDER PAD AREA
- 2. GROUNDING PAD AREA

RECOMMENDED PCB LAYOUT  
COMPONENT SIDE

EC NO: SH2007-0352	2006/11/17
DRWN: CHEN	2006/11/22
CHKD: HARVEY	2006/11/22
APPR: JINCHEN	2006/11/28
REV	DESCRIPTION
A1	

QUALITY SYMBOLS	▽=0
	∇=0

GENERAL TOLERANCES (UNLESS SPECIFIED)	mm	INCH
	4 PLACES ± ---	± ---
	3 PLACES ± ---	± ---
	2 PLACES ± 0.05	± ---
	1 PLACE ±	± ---
ANGULAR ± 3 °		
DRAFT WHERE APPLICABLE MUST REMAIN WITHIN DIMENSIONS		

DIMENSION STYLE		SCALE	DESIGN UNITS	THIRD ANGLE PROJECTION
MM ONLY		NTS	METRIC	
DRAWN BY	DATE	TITLE		
R. BIAN	2005/05/20	EXPRESSCARD 34MM		
CHECKED BY	DATE	BOTTOM MOUNT		
HARVEY	2006/04/18	PUSH-PUSH TYPE		
APPROVED BY	DATE	MOLEX INCORPORATED		
JENNY	2006/04/18			
MATERIAL NO.	DOCUMENT NO.	SHEET NO.		
N/A	SD-47322-001	4 OF 4		

SIZE	THIS DRAWING CONTAINS INFORMATION THAT IS PROPRIETARY TO MOLEX INCORPORATED AND SHOULD NOT BE USED WITHOUT WRITTEN PERMISSION		
A3			

9 8 7 6 5 4 3 2 1