

PRODUCT NUMBER
20020327-XXXXXXLF

20020327-□ □ □ □ □ 0 □ L F

PITCH

C: 3.50 mm
D: 3.81 mm

POLES

02: 2 POLES
03: 3 POLES
04: 4 POLES

24: 24 POLES

LF : DENOTED RoHS COMPATIBLE

1 : STANDARD PRODUCT
W/ BOX PACKING

SCREW CODE

| CODE | SCREW TYPE | AVAILABILITY |
|------|------------|-----------------|
| A | -/+ | ON REQUEST ONLY |
| B | - | STANDARD |

| PROPERTY TABLE | | | |
|---|----------|--------------------|--------------------|
| FCI SERIES NAME | | 26-350 | 26-381 |
| PITCH (mm) | | 3.50 | 3.81 |
| VOLTAGE RATING (VAC) | | 300 | 300 |
| CURRENT RATING (A) | | 10 | 10 |
| APPLICABLE WIRE RANGE (AWG) | 1-WIRE | 16~24 | 16~24 |
| | 2-WIRE | 20 | 20 |
| WIRE CROSS SECTION (mm ²) | SOLID | 1-WIRE | 1.5 |
| | | 2-WIRE | 0.5 |
| | STRANDED | 1-WIRE | 1.0 |
| | | 2-WIRE | 0.2 |
| OPENING CONTACT HOUSING(mm ²) | | 1.6x1.6 | 1.6x1.6 |
| WIRE STRIP LENGTH(mm) | | 5~6 | 5~6 |
| TORQUE +/-10% (N-m/Lb-in) | | 0.19/1.7 | 0.19/1.7 |
| SCREW | | M2x0.4 | M2x0.4 |
| WITHSTANDING VOLTAGE (kV) | | 1.6 | 1.6 |
| OPERATING TEMP. (°C) | | -40~+115 | -40~+115 |
| SOLDERING TEMP. (°C) | | 250±10 (5 sec.) | 250±10 (5 sec.) |
| POLES AVAILABLE | | 02~24 | 02~24 |
| SAFETY CERTIFICATE | | | |

HOUSING CODE

| CODE | COLOR | AVAILABILITY |
|------|-------------------|-----------------|
| 1 | GREEN(RAL 6018/T) | STANDARD |
| 2 | BLACK | ON REQUEST ONLY |
| 3 | GREY(RAL 7004/P) | ON REQUEST ONLY |
| 4 | BLUE(RAL 5015/A) | ON REQUEST ONLY |

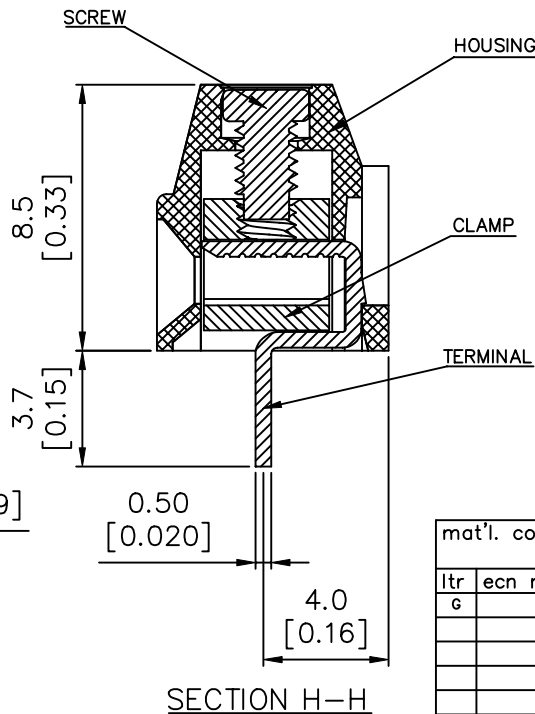
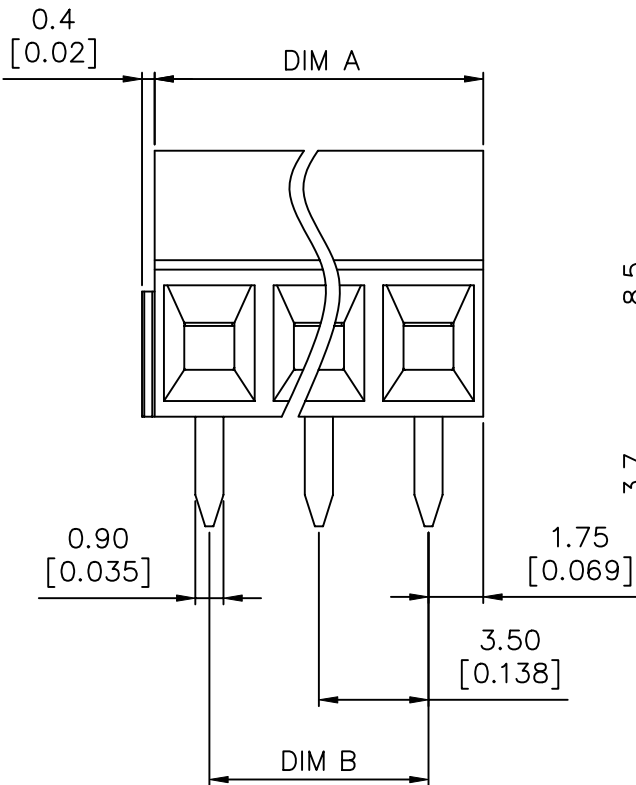
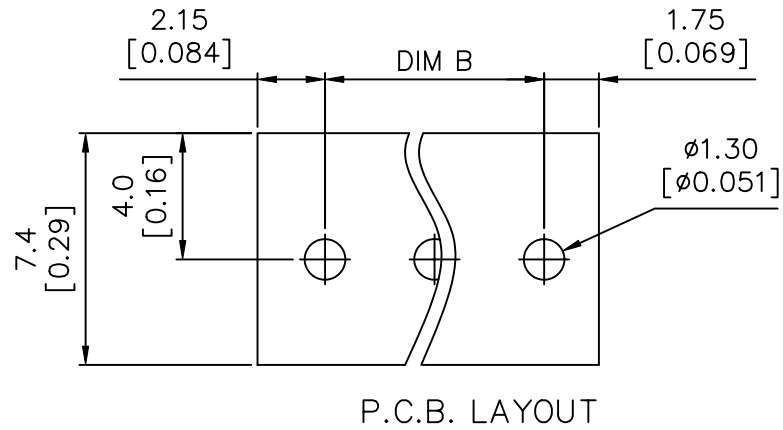
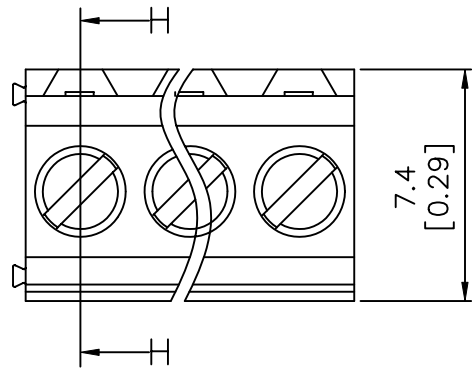
NOTES:

- MATERIALS**
 1-1 HOUSING: THERMALPLASTIC RESIN, UL 94V-0 RATED.
 1-2 SCREW: STEEL, ZINC PLATED.
 1-3 CLAMP: COPPER ALLOY, NICKEL PLATED.
 1-4 TERMINAL: COPPER ALLOY, TIN PLATED.
 2. PRODUCTION SPECIFICATION REFER TO FCI GS-12-625.
 3. BOXED PACKAGING.
 DETAILED PRODUCT PACKING SPECIFICATION REFER TO FCI GS-14-1394.
 4. FCI, SAFETY CERTIFICATE LOGO AND SERIES NAME TO BE SHOWN ON PRODUCT SURFACE.
 5. THE PRODUCTS WHERE THE PART NUMBER END IN "LF" MEET THE EUROPEAN UNION DIRECTIVE AND OTHER COUNTRY REGULATIONS AS DESCRIBED IN GS-22-008.
 6. RECOMENDED SOLDERING PROCESS BY WAVE SOLDER.

| mat'l. code | | | | surface ASME Y14.5 ✓ / tolerance ASME Y14.5 | | projection | | product family | |
|---------------------------------------|--|--|--|---|--|------------|--|-----------------------------|--|
| tolerances unless otherwise specified | | | | X.±0.5 | | | | TERMINAL BLOCK | |
| angles | | | | X.X±0.3 | | MM | | title | |
| X°±1' | | | | X.XX±0.1 | | [INCH] | | TERMINAL BLOCK | |
| scale | | | | scale | | scale | | FIXED HORIZONTAL WIRE INLET | |
| dr | | | | BEER FU | | 062509 | | dwg no | |
| enr | | | | BEER FU | | 062509 | | sheet 1 of 3 size | |
| chr | | | | GARY HSIEH | | 062509 | | 20020327 | |
| appd | | | | JOSEPH HSIA | | 062509 | | A4 | |
| sheet | | | | G | | G | | type | |
| revision | | | | 1 | | 2 | | CUSTOMER Drawing | |
| index | | | | 1 | | 2 | | 3 | |



| | | |
|--------------------|-------------|---------|
| PRODUCT NUMBER | SERIES NAME | PITCH |
| 20020327-CXXXXXXLF | 26-350 | 3.50 mm |



N = Number of poles
 Dim A = $N \times 3.5 [0.138]$
 Dim B = $(N-1) \times 3.5 [0.138]$

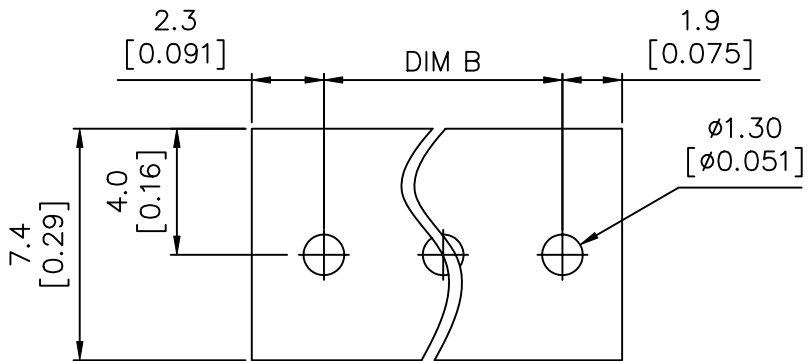
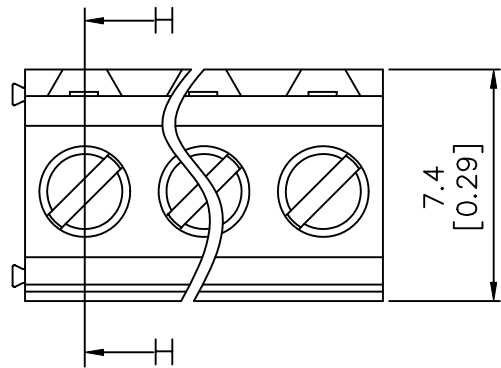
| TOL. | Dim A | Dim B |
|--------|--------------------|-------|
| 2-6p | $\pm 0.15 [0.006]$ | |
| 7-12p | $\pm 0.20 [0.008]$ | |
| 13-16p | $\pm 0.25 [0.010]$ | |
| 17-24p | $\pm 0.30 [0.012]$ | |

| | | | | | |
|-------------|-----------------|-----------------------|--------------------------|--|----------------------------------|
| mat'l. code | | surface ASME Y14.5 | tolerance ASME Y14.5 | projection | product family TERMINAL BLOCK |
| ltr | ecn no | dr | date | title TERMINAL BLOCK FIXED HORIZONTAL WIRE INLET | |
| g | angles X°±1' | | | tolerance X.X±0.3 | scale MM [INCH] |
| sheet index | | revision sheet | dwg no 20020327 | | |
| sheet index | | revision sheet | type CUSTOMER Drawing | | sheet 2 of 3 size A4 |
| sheet index | | revision sheet | type CUSTOMER Drawing | | sheet 2 of 3 size A4 |

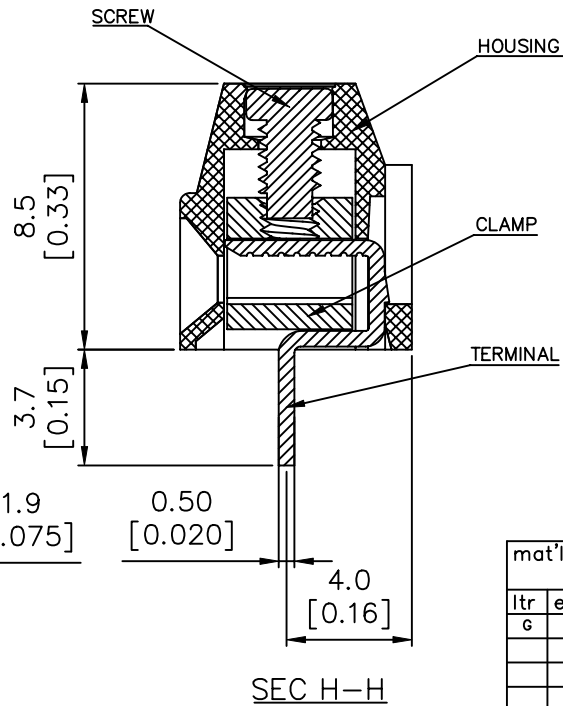
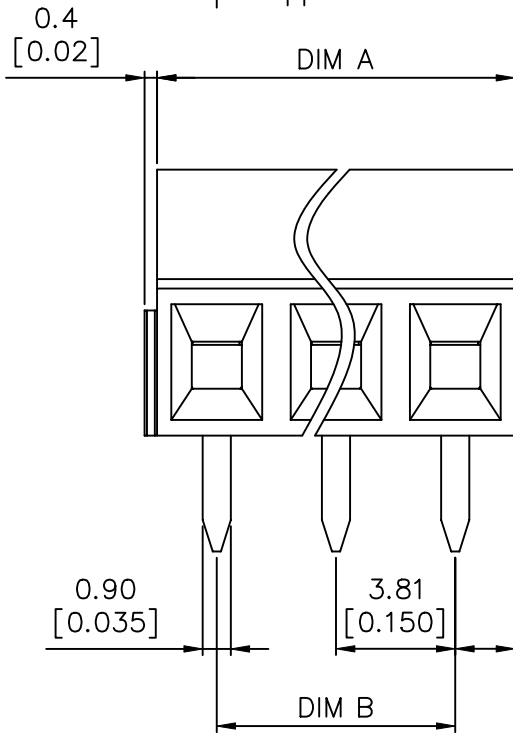




| | | |
|------------------|-------------|---------|
| PRODUCT NUMBER | SERIES NAME | PITCH |
| 20020327-DXXXXXL | 26-381 | 3.81 mm |



P.C.B. LAYOUT



N = Number of poles
 Dim A = $N \times 3.81 [0.150]$
 Dim B = $(N - 1) \times 3.81 [0.150]$

| TOL. | Dim A | Dim B |
|--------|--------------------|-------|
| 2-6p | $\pm 0.15 [0.006]$ | |
| 7-12p | $\pm 0.20 [0.008]$ | |
| 13-16p | $\pm 0.25 [0.010]$ | |
| 17-24p | $\pm 0.30 [0.012]$ | |

| | | | | | |
|---------------------------------------|--------|--|-------------------------|--------------------------|---|
| mat'l. code | | surface ASME Y14.5 | tolerance ASME Y14.5 | projection | product family TERMINAL BLOCK |
| ltr | ecn no | dr | date | title | |
| tolerances unless otherwise specified | | | | MM [INCH] | TERMINAL BLOCK FIXED HORIZONTAL WIRE INLET |
| angles | | $X \pm 0.5$ $X.X \pm 0.3$ $X.XX \pm 0.1$ | | | |
| line | | $X \pm 1^{\circ}$ | | | |
| dr | | BEER FU | 062509 | dwg no | |
| enr | | BEER FU | 062509 | sheet 3 of 3 size | |
| chr | | GARY HSIEH | 062509 | 20020327 | |
| appd | | JOSEPH HSIA | 062509 | A4 | |
| sheet index | | revision sheet | | type CUSTOMER Drawing | |