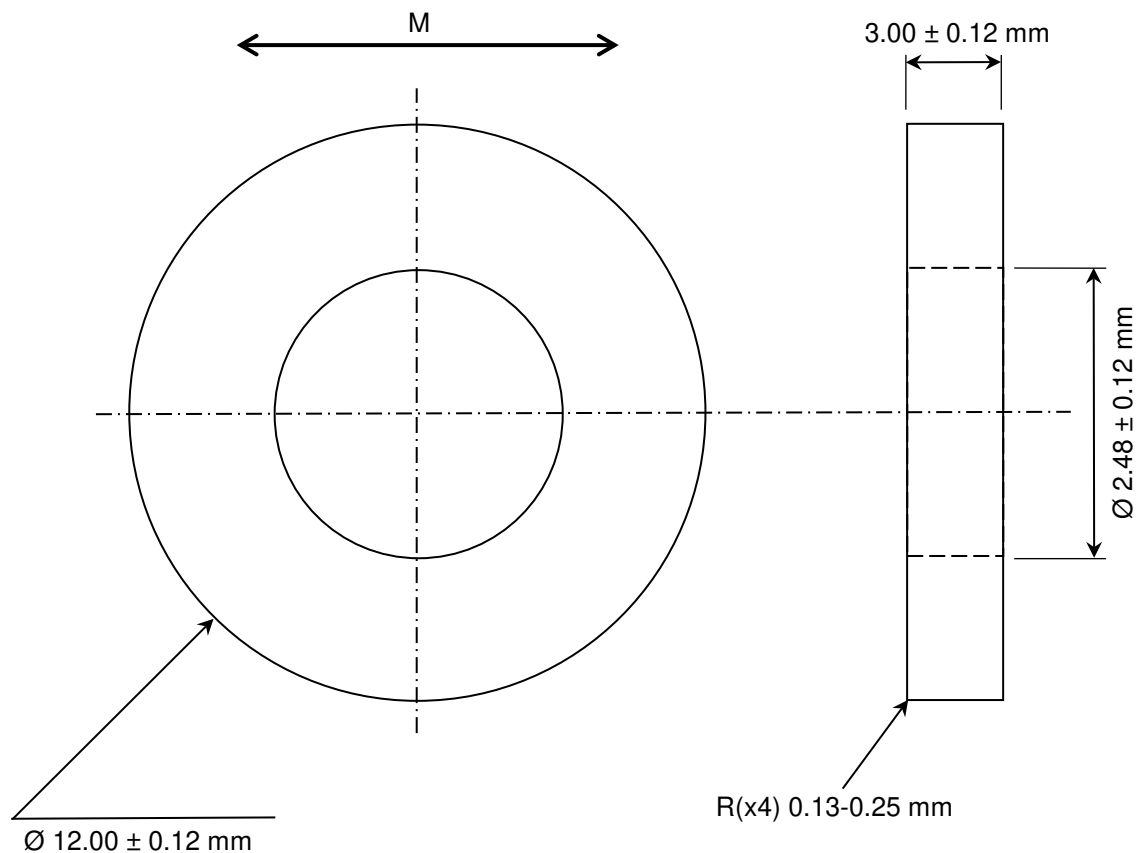


**CONFIDENTIAL & PROPRIETARY INFORMATION**

This document contains Confidential and Proprietary Information of Alliance LLC, and all design, manufacturing, reproduction, use, and sale rights of such information are expressly reserved



**1. MAGNET PROPERTIES PER N38SH:**

Br: 12,200-12,700 G  
 Hc: 11,300-12,000 Oe  
 Hci: ≥20,000 Oe  
 BH<sub>(max)</sub>: 36-39 MGOe  
 T max: 150° C (302° F)

**2. NICKEL PLATED**

**3. MAGNETIZED ACROSS DIAMETER**



Rev	Date	By

**TOLERANCES**  
 (UNLESS OTHERWISE NOTED)

DECIMAL	METRIC
X.XX = ± .01	X.X = ± .25
X.XXX = ± .005	X.XX = ± .13

**ANGLES**  
 ± .5°

DO NOT SCALE DRAWING

<b>Alliance LLC</b>		
1450 CLARK DRIVE, VALPARAISO, INDIANA 46385		
DESCRIPTION: RARE EARTH RING MAGNET		
<b>P/N: YB-076-1</b>	<b>Rare Earth NdFeB</b>	
MATERIAL: NdFeB	Dwg by: BT	REV LEVEL: A
COATING: Nickel	Apr by: DV	Apr. Dated: 03-14-2020