

MATERIALS AND FINISHES

HOUSING BRASS  
PLATED GOLD

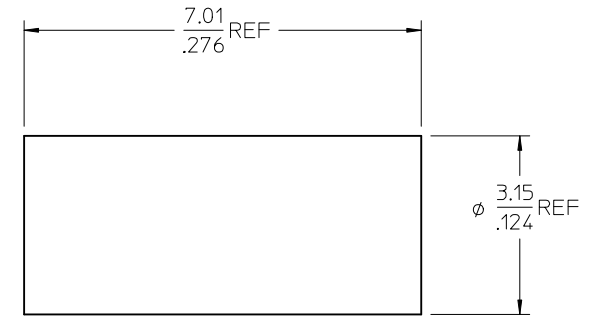
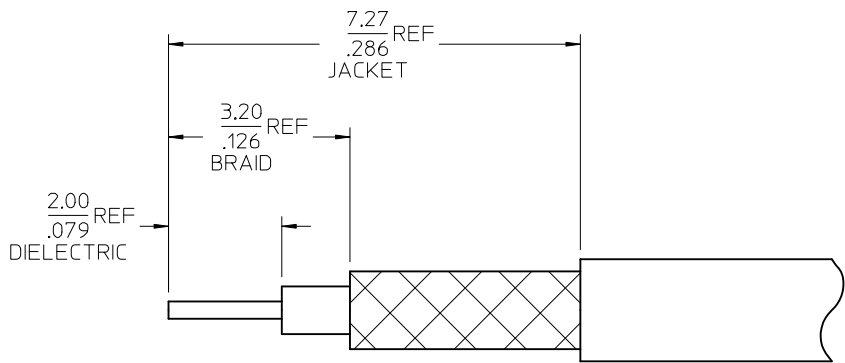
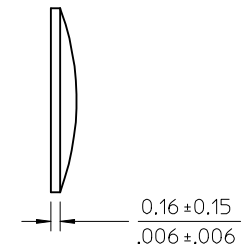
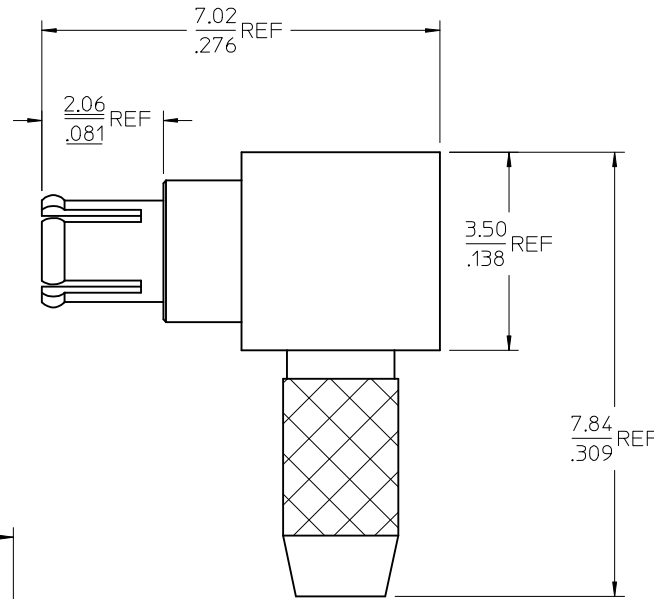
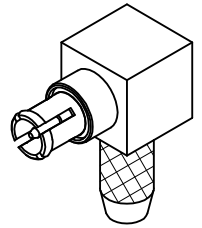
CENTER CONTACT BRASS  
PLATED GOLD

CAP BRASS  
PLATED GOLD

OUTER CONTACT BERYLLIUM COPPER  
PLATED GOLD

TUBE BRASS  
PLATED GOLD

INSULATOR TEFLON



RECOMMENDED STRIPPING  
DIMENSIONS

CRIMP HEX SIZE .105 INCH

CHG: ADDED 7.01 REF. Ø3.15 REF AND STRIPPING DIMENSION	EC NO: URF2007-0270	2007/01/10
DRW:SSSHAH	2007/01/10	
CHKD:FLAHERY	2007/01/10	
APPR:WIENER	2007/01/10	
REV	DESCRIPTION	
A2		

QUALITY SYMBOLS
▽=0
▽=0

GENERAL TOLERANCES (UNLESS SPECIFIED)
4 PLACES ± .005 ± .005
3 PLACES ± .005 ± .005
2 PLACES ± 0.05 ± .005
1 PLACE ± 0.10 ± .005
ANGULAR ± 2 °
DRAFT WHERE APPLICABLE MUST REMAIN WITHIN DIMENSIONS

DIMENSION STYLE	MM/IN
DRAWN BY	JOHN
DATE	2005/03/30
CHECKED BY	JOHNSON
DATE	2005/03/30
APPROVED BY	MISEN
DATE	2005/03/30
MATERIAL NO.	734130070
SIZE	C

SCALE	DESIGN UNITS	THIRD ANGLE PROJECTION
	METRIC	
TITLE		
SSMCX PLUG, R/A, 50 OHM FOR RG178 CABLE SSMCX-PC/RA		
MOLEX INCORPORATED		
DOCUMENT NO.	SD-73413-007	SHEET NO.
		1 OF 1
THIS DRAWING CONTAINS INFORMATION THAT IS PROPRIETARY TO MOLEX INCORPORATED AND SHOULD NOT BE USED WITHOUT WRITTEN PERMISSION		