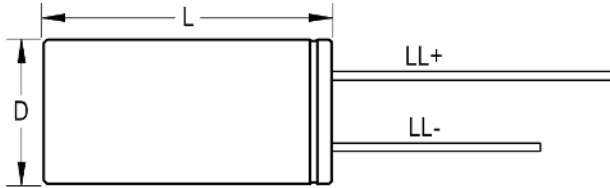


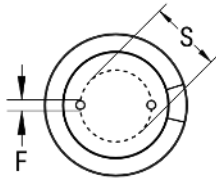
ESG226M250AL3AA

ESG, Aluminum Electrolytic, 22 μ F, 20%, 250 VDC, -40/+105°C, Lead Spacing = 5mm

SIDE VIEW



TERMINAL END VIEW



Click [here](#) for the 3D model.

Dimensions

D	13mm +/-0.5mm
L	20mm +2mm
S	5mm +/-0.5mm
LL Negative	15mm MIN
LL Positive	20mm MIN
F	0.6mm NOM

Packaging Specifications

Packaging	Bulk, Bag
Packaging Quantity	2000

General Information

Series	ESG
Dielectric	Aluminum Electrolytic
Description	Long Life Single Ended Aluminum Electrolytic
Features	Long Life
RoHS	Yes
Lead	Wire Leads
AEC-Q200	No

Specifications

Capacitance	22 μ F
Capacitance Tolerance	20%
Voltage DC	250 VDC, 300 VDC (Surge)
Temperature Range	-40/+105°C
Rated Temperature	105°C
Life	5000 Hrs
Dissipation Factor	15% 120Hz 20C
Ripple Current	160 mAmps (120Hz 105C)
Leakage Current	340 μ A (2min 20°C)
Impedance Ratio at -25C	3
Impedance Ratio at -40C	6