



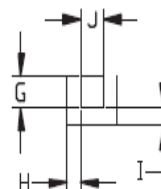
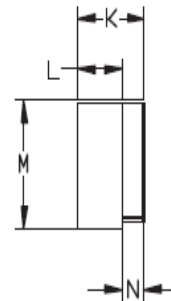
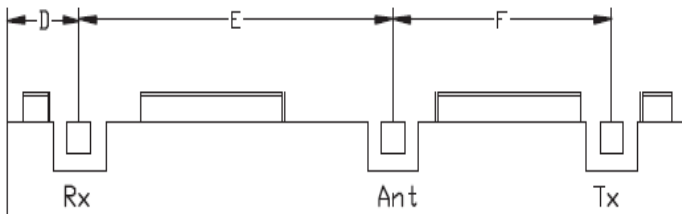
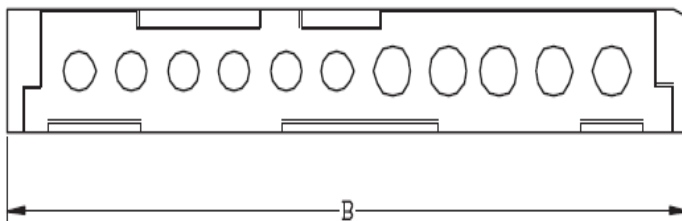
| <u>Characteristics</u> | <u>TX</u> | <u>RX</u> |
|----------------------------------|-------------------|---------------|
| Passband: | 1626.5-1660.5 MHz | 1525-1559 MHz |
| Bandwidth: | 34 MHz | 34 MHz |
| Passband Return Loss: | 10 dB min | 10 dB min |
| Passband Insertion Loss: | .9 dB max | .9 dB max |
| Passband Ripple: | .5 dB max | .5 dB max |
| Input / Output Impedance: | 50 Ohms | 50 Ohms |
| Isolation: | 65 dB min | 65 dB min |
| Power Handling: | 5 W max | 5 W max |

| <u>Mechanical</u> | |
|-------------------------|------------------------|
| Mounting Method: | SMT |
| Dimensions: | 60.8 x 10.59 x 9.25 mm |

| <u>Environmental</u> | |
|-------------------------------|------------------|
| Operating Temperature: | -40 to +70 deg.C |
| Storage Temperature: | -50 to +90 deg.C |

This product is RoHs compliant.

Outline Drawing:



| Dim | Nominal (mm) | Tolerance (mm) +/- or max |
|-----|--------------|---------------------------|
| A | | |
| B | 60.8 | max |
| C | | |
| D | 6.43 | 0.25 |
| E | 27.82 | 0.13 |
| F | 19.49 | 0.13 |
| G | 2.03 | 0.13 |
| H | 1.27 | 0.13 |
| I | 1.27 | 0.13 |
| J | 2.03 | 0.13 |
| K | 9.25 | max |
| L | 6.69 | 0.25 |
| M | 10.59 | max |
| N | 2.29 | 0.13 |



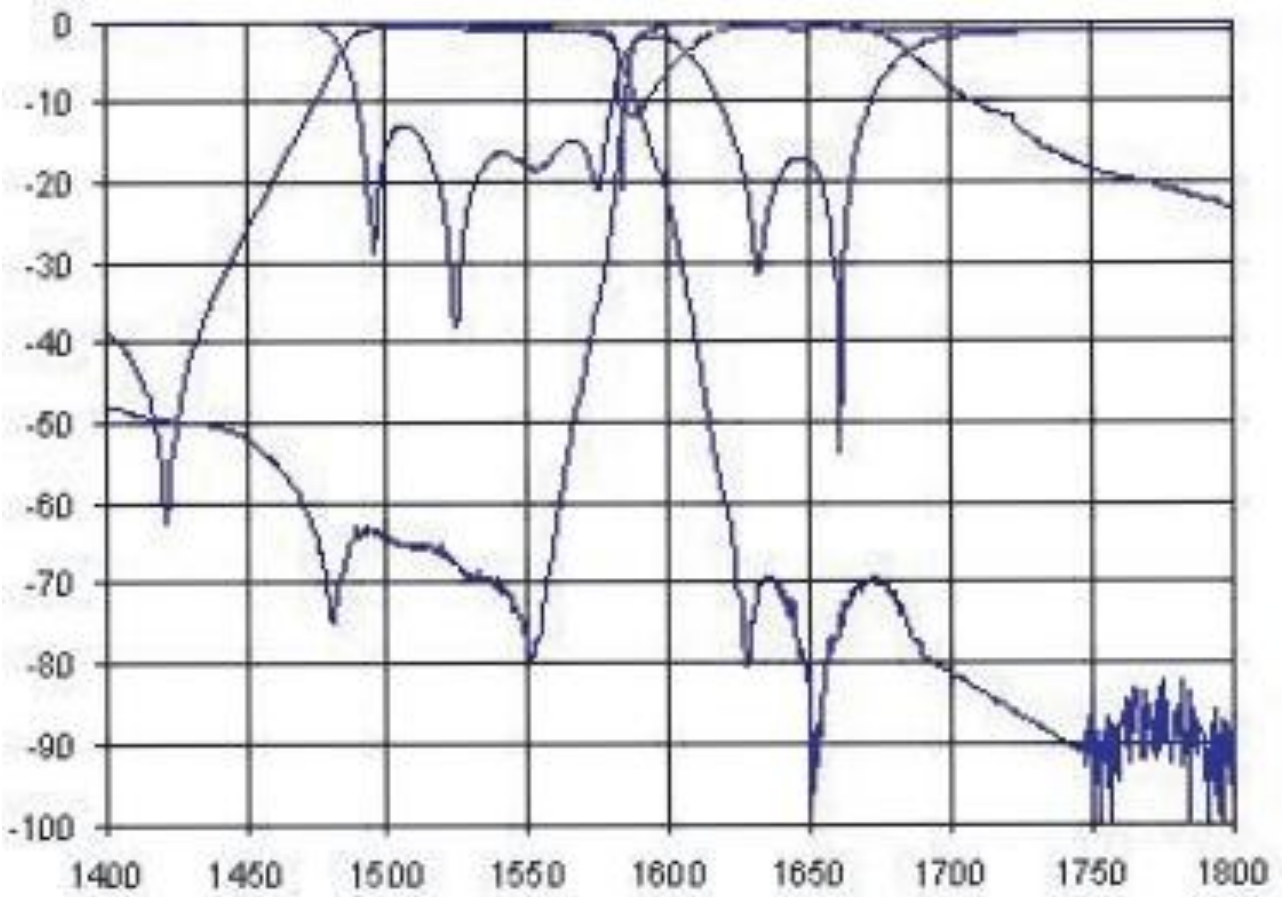
ANATECH ELECTRONICS INC
RF & Microwave Filters & Products

1600 MHz Ceramic Duplexer

Part Number: AM1600D803



Response Plot:





PCB Layout:

