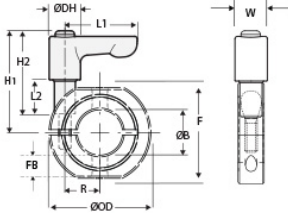




LV-OF-MCL-40-A

Ruland LV-OF-MCL-40-A, 40mm Mountable One-Piece Shaft Collar with Clamping Lever, Aluminum Collar with Zinc Plated Lever, 60mm OD, 15mm Width



Description

Ruland LV-OF-MCL-40-A is a one-piece mountable quick clamping shaft collar with clamping lever with a 40mm bore, 60mm OD, and 15mm width. It is made from OF-MCL-40-A and LF45-CL-M6:20-ZS. LV-OF-MCL-40-A has OD flats and tapped holes for mounting shaft collars to each other or adjacent components. The clamp style design does not mar the shaft, is easy to remove, and is indefinitely adjustable. The threaded stud on the lever is used in place of standard collar hardware. When combined, the two parts create a shaft collar that requires no tools to install, remove, or reposition and is ideally suited for packaging, printing, and other applications where frequent setup changes and adjustments are needed. Once the lever is installed in the shaft collar, users simply turn the lever until they meet their desired torque. The adjustable lever can be reposition by the user without the loss of holding power by lifting the handle and twisting it 40° to lock it in a new position. This allows for use in space constrained environments where 360° rotation is not possible to fully seat the lever. OF-MCL-40-A is made from high-strength 2024 aluminum. LF45-CL-M6:20-ZS has a zinc plated steel handle and stainless steel threaded stud. This material combination allows for a lightweight durable quick clamping and release component that is suitable for most industrial applications. The lever is black to seamlessly integrate with the aesthetics of most equipment. OF-MCL-40-A is manufactured by Ruland and LF45-CL-M6:20-ZS is manufactured by Otto Ganter. LV-OF-MCL-40-A is RoHS3 and REACH compliant.

Product Specifications

Bore (B)	40 mm	Bore Tolerance	+0.050 mm / +0.012 mm
Outer Diameter (OD)	60 mm	Center to Lever Top H1	40.8 mm
Width (W)	15 mm	Width Tolerance	+0.076 mm / -0.254 mm
Lever Length L1	45 mm	Lever Height H2	40.5 mm
Hub Diameter DH	13 mm	Sleeve Length L2	20 mm
Threaded Mounting Hole	M6	Distance Across Flats (F)	55 mm
Flat to Bore FB	7.5 mm	Recommended Shaft Tolerance	+0.000 mm / -0.013 mm
Thread TH	M6	Hex Wrench Size	5.0 mm
Seating Torque	16 Nm	Screw Location (R)	24.99 mm
Number of Screws	1 ea	Collar Part Number	OF-MCL-40-A
Lever Part Number	LF45-CL-M6:20-ZS	Collar Material	Aluminum
Collar Finish	Bright	Handle Color	Black
Handle Material	Zinc	Handle Finish	Powder Coated
Insert and Screw Material	303 Stainless Steel	Manufacturer	Ruland Manufacturing
Country of Origin	Shaft Collar - USA Lever - Germany	Weight (lbs)	0.227300
UPC	634529303283	Tariff Code	8483.60.8000
UNSPC	31162811		
Note 1	Performance ratings are for guidance only. The user must determine suitability for a particular application.		
Note 2	No backslot		
Prop 65	⚠️ WARNING This product can expose you to the chemical Soots, Benzene, Lead, Nickel (metallic), and Ethylene Thiourea		