

INTRODUCTIONS

1. Designed as a general purpose filter providing effective EMI suppression.
2. All part numbers are UL recognized, CSA certified and VDE approved.

COMPONENTS

PARTNO.	Cx(uF)	L(mH)	Cy(pF)	R() ̵
* 02DBAG5	0.1	1.1	3300	-
* 02DBAW5				
* 03DBAG5		2.8		
* 03DBAW5				
* 05DBAG5		2.9		
* 05DBAW5				
06BDW3S	0.47	3.7		330K
* 10DBAG5	0.1	1.5	3300	-
* 10DBAW5				
* 10DBAS5				330K
10DBG3S	0.47	1.45		330K
20DBAG5	0.33	0.7	3300	-
20DBAS5				
12DBG5B	0.1	0.7	4700	1.0M
16DBG5B		0.65		
16DBCW5B				
20DBG5B		0.60		
20DBCS5B				
30DBCS5B	0.47	0.67	10000	

- UL & CSA approved only.
- * OPTION 300V

MINIMUM INSERTION LOSS IN dB

COMMON MODE (L-G) IN 50 OHM SYSTEM							
CURRENT RATING	FREQUENCY-MHz						
	.15	.50	1.0	5.0	10	30	
2,3,5A	15	30	38	45	45	40	
6A	20	25	35	40	45	35	
10A	20	30	35	50	50	45	
* 10A	15	22	30	40	40	45	
20A	13	20	25	40	45	45	
12A(BG5B)	10	20	22	35	40	40	
16A(CG5B)(CW5B)	10	18	20	35	50	30	
20A(CG5B)(CS5B)	10	20	22	30	35	35	
30A(CS5B)	10	28	30	45	50	35	
DIFFERENTIAL MODE (L-L) IN 50 OHM SYSTEM							
2,3,5A	6	15	20	40	45	45	
6A	10	18	20	30	35	40	
10A	6	15	20	44	45	45	
* 10A	12	18	20	35	35	40	
20A	15	24	28	45	45	45	
12A(BG5B)	5	12	15	35	45	35	
16A(CG5B)(CW5B)	5	10	15	45	45	40	
20A(CG5B)(CS5B)	4	10	15	45	45	40	
30A(CS5B)	12	20	25	45	50	45	

* 10DBG3S, DW3S

SPECIFICATIONS

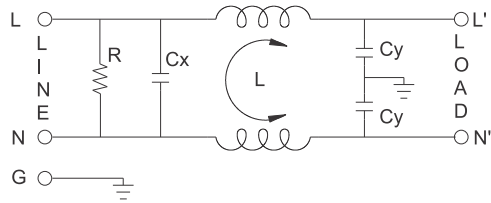
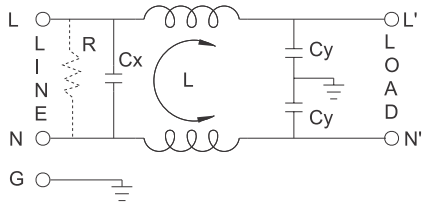
1. Maximum leakage current each
line-to-ground @ 115VAC 60Hz: 0.25mA
1.0mA (10000pF)
@ 250VAC 50Hz: 0.45mA
2.0mA (10000pF)
2. Hipot rating (one minute)
line-to-ground: 2250VDC
line-to-line: 1450VDC
3. Operating frequency: 50/60Hz
4. Rated voltage: 115/250VAC

SERIES DIMENSIONS

CURRENT RATING	STYLE	DIMENSIONS IN INCHES/mm				
		A	B	C	D	E
2A	AG5	2.15 54.6	1.77 45.0	0.65 16.5	2.54 64.5	64.5
	AW5	0.96 24.4				
3A	AG5	2.54 64.5	1.77 45.0	0.77 19.5	2.13 54.1	2.50 63.5
	AW5	1.33 33.8				
5A	AG5	2.54 64.5	1.77 45.0	0.77 19.5	2.13 54.1	2.50 63.5
	AW5	1.33 33.8				
6A	DW3S	2.55 64.77	2.08 52.83	1.29 32.77	1.575 40.01	0.61 15.49
	10A	AG5	2.54 64.5	1.77 45.0	1.18 30.0	2.13 54.1
AW5		1.33 33.8				
AS5		3.10 78.7	2.02 51.3	1.18 30.0	2.38 60.5	2.77 70.3
DG3S		3.14 79.80	2.10 53.30	1.28 32.50	1.575 40.00	0.61 15.50
20A	AG5	3.25 82.5	2.02 51.3	1.16 29.5	2.38 60.5	2.75 69.9
	AS5	3.37 85.6	2.02 51.3	1.15 29.2	2.38 60.5	2.77 70.3

CURRENT RATING	STYLE	DIMENSIONS IN INCHES/mm					
		A	B	C	D	E	F
12A	BG5B	2.13 54.00	2.54 64.5	1.34 34.0	1.77 45.0	1.18 30.0	-
		2.40 61.00	2.81 71.5	1.79 45.5	2.02 51.3		
16A	CG5B	2.40 61.00	2.81 71.5	1.79 45.5	2.02 51.3	1.18 30.0	-
	CW5B	2.40 61.00	2.81 71.5	1.79 45.5	2.02 51.3		
20A	CG5B	2.95 75.00	3.34 84.8	2.04 51.8	2.52 64.0	1.18 30.0	-
	CS5B	2.95 75.00	3.34 84.8	2.04 51.8	2.52 64.0		
30A	CS5B	4.06 103.0	4.49 114.0	2.22 56.5	3.74 95.0	1.83 46.4	-
		4.06 103.0	4.49 114.0	2.22 56.5	3.74 95.0	1.83 46.4	-

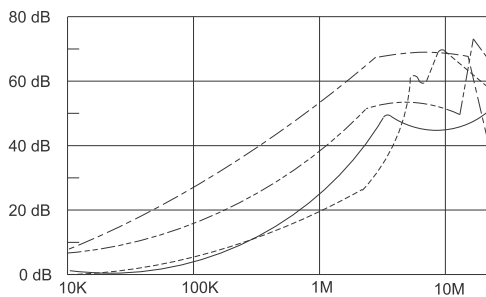
ELECTRICAL SCHEMATIC



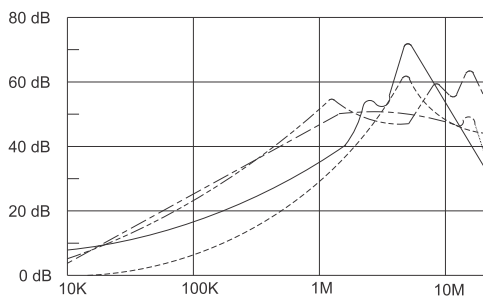
XXDBXX5B

INSERTION LOSS (TYPICAL)

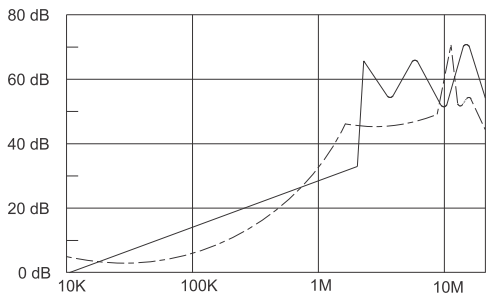
02DBAG5 --- COMMON MODE --- DIFF. MODE
 03DBAG5 --- COMMON MODE --- DIFF. MODE



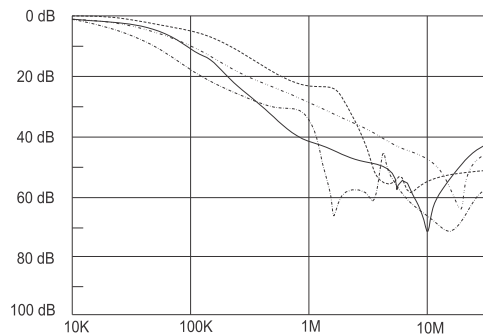
05DBAG5 --- COMMON MODE --- DIFF. MODE
 10DBAG5 --- COMMON MODE --- DIFF. MODE



20DBAG5 --- COMMON MODE --- DIFF. MODE

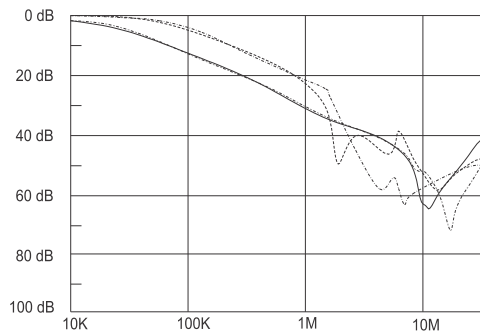


20DBC5B --- COMMON MODE --- DIFF. MODE
 20BCS5B --- COMMON MODE --- DIFF. MODE
 30BCS5B --- COMMON MODE --- DIFF. MODE

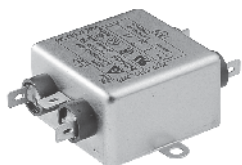


12DBBG5B --- COMMON MODE --- DIFF. MODE

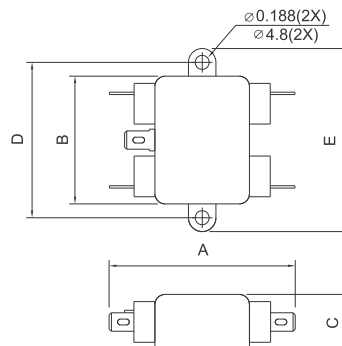
16DBC5B --- COMMON MODE --- DIFF. MODE
 16BCW5B --- COMMON MODE --- DIFF. MODE



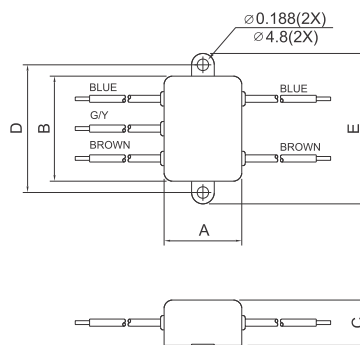
MECHANICAL CONSTRUCTION



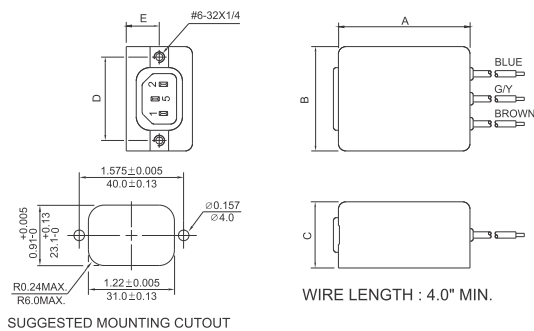
AG5



AW5

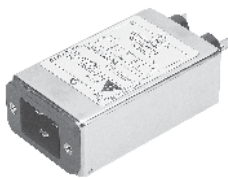


DW3S

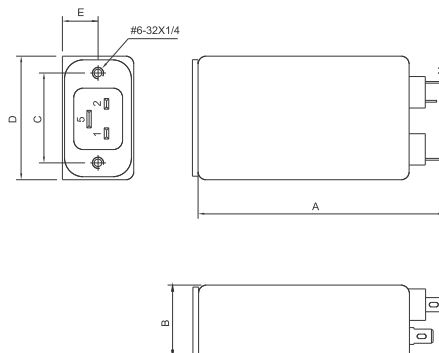


UNIT: $\frac{\text{INCH}}{\text{mm}}$

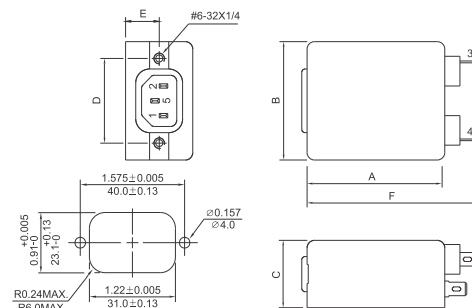
MECHANICAL CONSTRUCTION



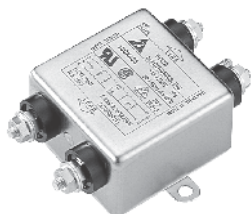
DG3



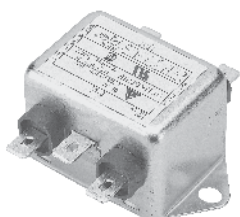
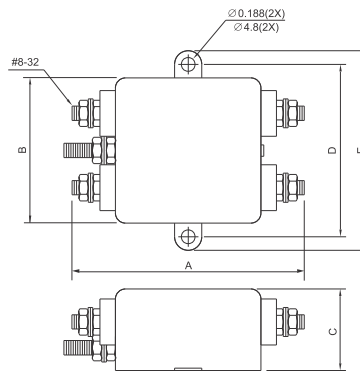
DG3S



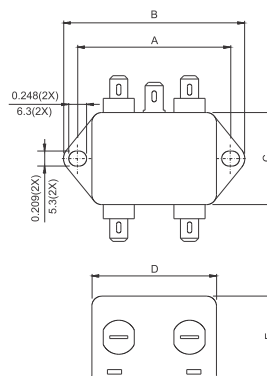
SUGGESTED MOUNTING CUTOUT



AS5



BG5B
(option wire style)



MECHANICAL CONSTRUCTION



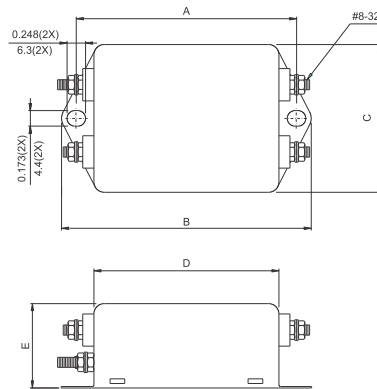
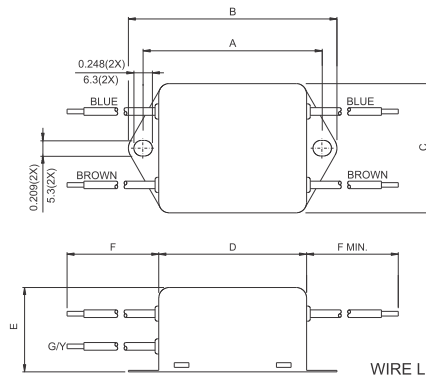
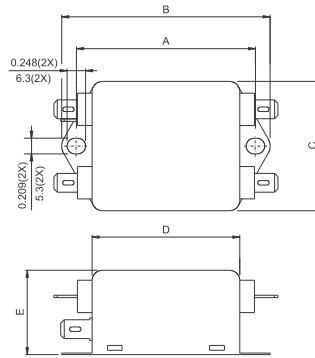
CG5B



CW5B



CS5B



UNIT: $\frac{\text{INCH}}{\text{mm}}$