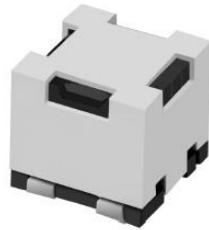
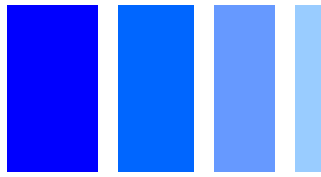


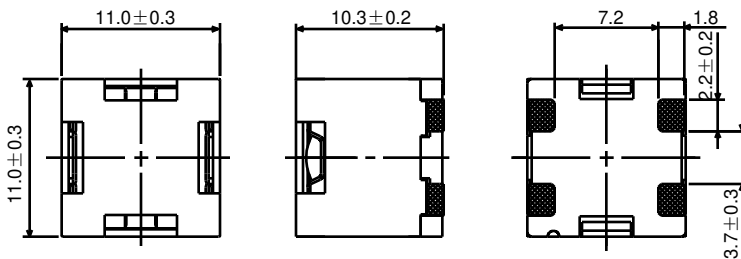
SMD Power Inductor CDEPI106



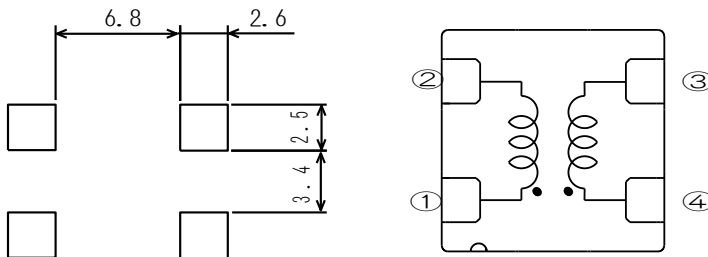
Description

- Ferrite core construction.
- Magnetically shielded.
- L × W × H: 11.3 × 11.3 × 10.5 mm Max.
- Product weight: 3.6 g (Ref.)
- Moisture Sensitivity Level: 1
- RoHS compliance.

Dimension - [mm]



Land pattern and Schematics - [mm]



Environmental Data

- Operating temperature range: -40°C ~ +105°C (including coil's self temperature rise)
- Storage temperature range: -40°C ~ +105°C
- Solder reflow temperature: 260 °C peak.

Packaging

- Carrier tape and reel packaging
- 13.0" diameter reel
- 250pcs per reel

Applications

- Ideally used in digital Amplifier in car audio, home theater and large LCD etc.

Electrical Characteristics

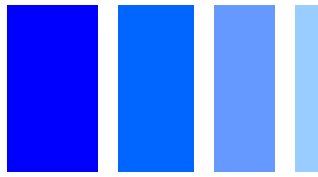
PART NAME	STAMP	INDUCTANCE [WITHIN] ※1		D.C.R. (mΩ) [MAX.] (Typ.) (at 20°C)		THE SATURATION CURRENT (A) ※2		HEATING CURRENT (A) ※3
		BETWEEN 1-2	BETWEEN 4-3	BETWEEN 1-2	BETWEEN 4-3	(at 20°C)	(at 105°C)	
CDEPI106NP-100	100	10μH ± 25%	10μH ± 25%	28.8(23.0)	28.8(23.0)	4.9	4.5	4.0
CDEPI106NP-150	150	15μH ± 25%	15μH ± 25%	28.8(23.0)	28.8(23.0)	3.5	3.0	4.0
CDEPI106NP-220	220	22μH ± 30%	22μH ± 30%	28.8(23.0)	28.8(23.0)	2.2	1.9	4.0

※1. Measuring condition: at 100kHz.

※2. Saturation current: The value of D.C. current when the inductance decreases to 75% of it's nominal value.

※3. Heating current: The value of D.C. current when the temperature rise is Δt=40°C (Ta=20°C).

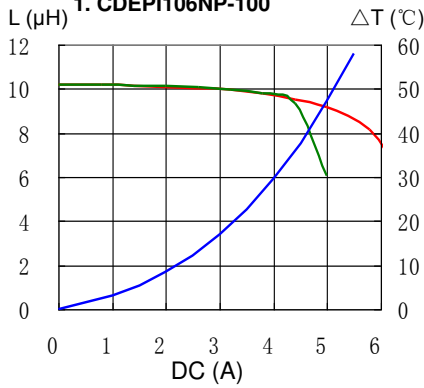
SMD Power Inductor CDEPI106



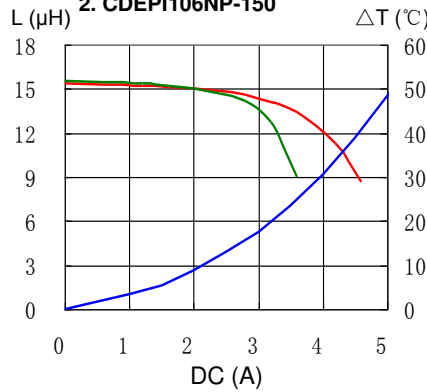
Saturation Current & Temperature Rise Graph

— L (20°C) — L (105°C) — ΔT

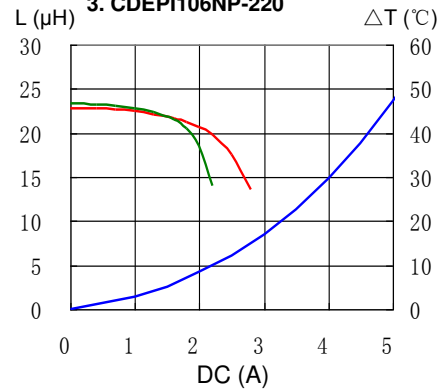
1. CDEPI106NP-100



2. CDEPI106NP-150

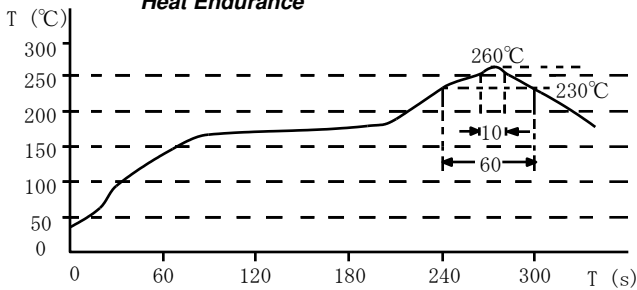


3. CDEPI106NP-220

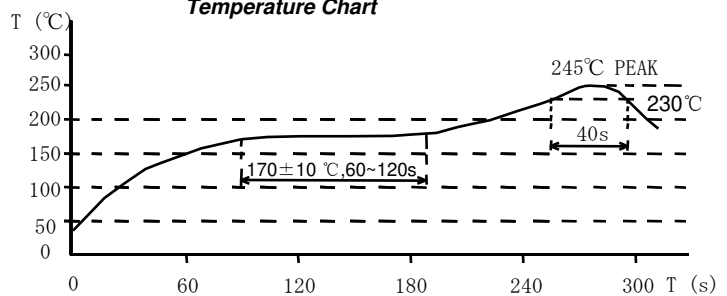


Solder Reflow Condition

Heat Endurance



Temperature Chart



Please refer to the sales offices on our website - <http://www.sumida.com>

Hong Kong

Tel. +852-2880-6781
FAX. +852-2565-9600
sales@hk.sumida.com

Saitama(Japan)

Tel. +81-48-691-7300
FAX. +81-48-691-7340
sales@jp.sumida.com

Chicago

Tel. +1-847-545-6700
FAX. +1-847-545-6720
sales@us.sumida.com

Shanghai

Tel. +86-21-5836-3299
FAX. +86-21-5836-3266
shanghai.sales@cn.sumida.com

Seoul

Tel. +82-2-6237-0777
FAX. +82-2-6237-0778
sales@kr.sumida.com

Obernzell

Tel. +49-8591-937-0
FAX. +49-8591-937-103
contact@eu.sumida.com

Shenzhen

Tel. +86-755-8291-0228
FAX. +86-755-8291-0338
shenzhen.sales@cn.sumida.com

Singapore

Tel. +65-6296-3388
FAX. +65-6841-4426
sales@sg.sumida.com

Neumarkt

Tel. +49-9181-4509-110
FAX. +49-9181-4509-310
infocomp@eu.sumida.com

Taipei

Tel. +886-2-8751-2737
FAX. +886-2-8751-2738
sales@tw.sumida.com

San Jose

Tel. +1-408-321-9660
FAX. +1-408-321-9308
sales@us.sumida.com