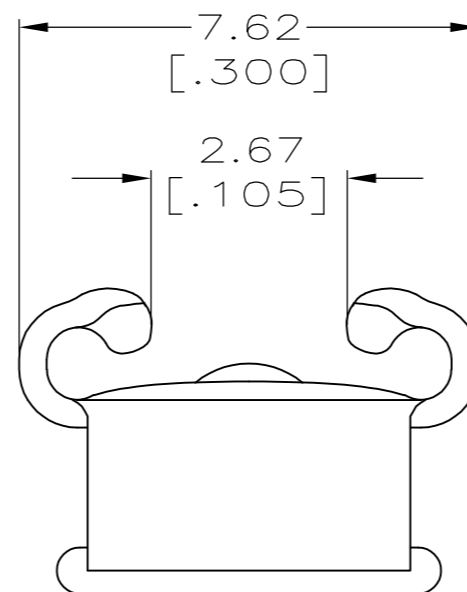
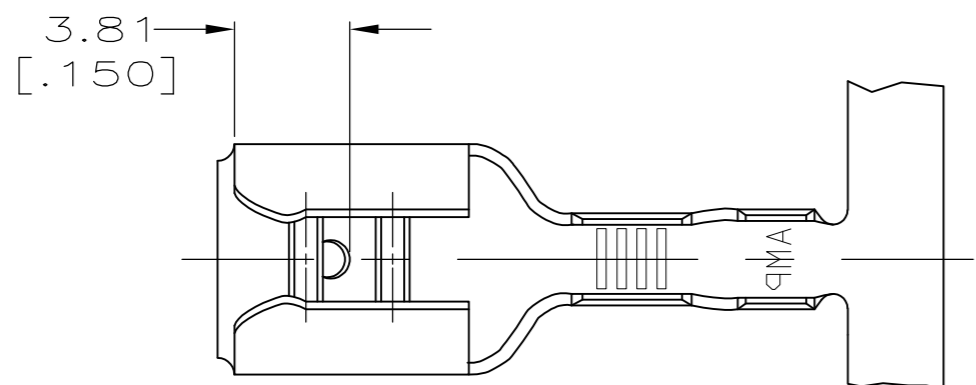


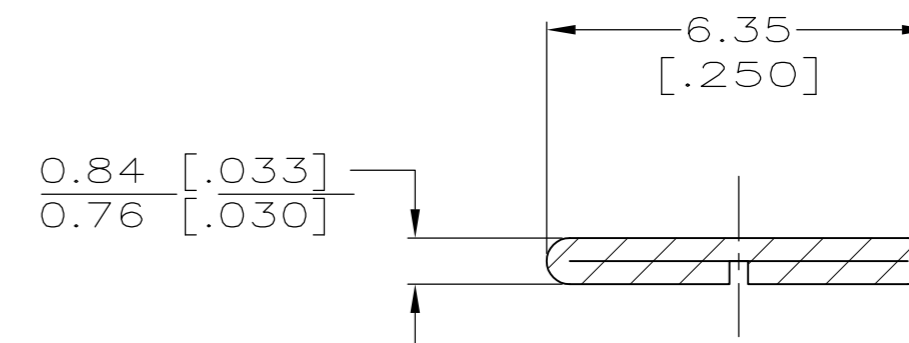
THIS DRAWING IS UNPUBLISHED. RELEASED FOR PUBLICATION  
 © COPYRIGHT - By - ALL RIGHTS RESERVED.

LOC	DIST	REVISIONS			
P	LTR	DESCRIPTION	DATE	DWN	APVD
AF	50	H	REVISED PER ECR-12-013459	27NOV2012	KH PD

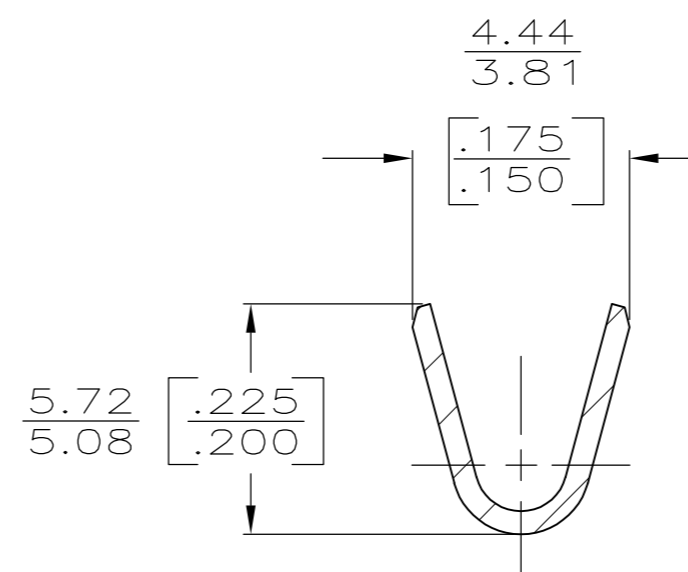
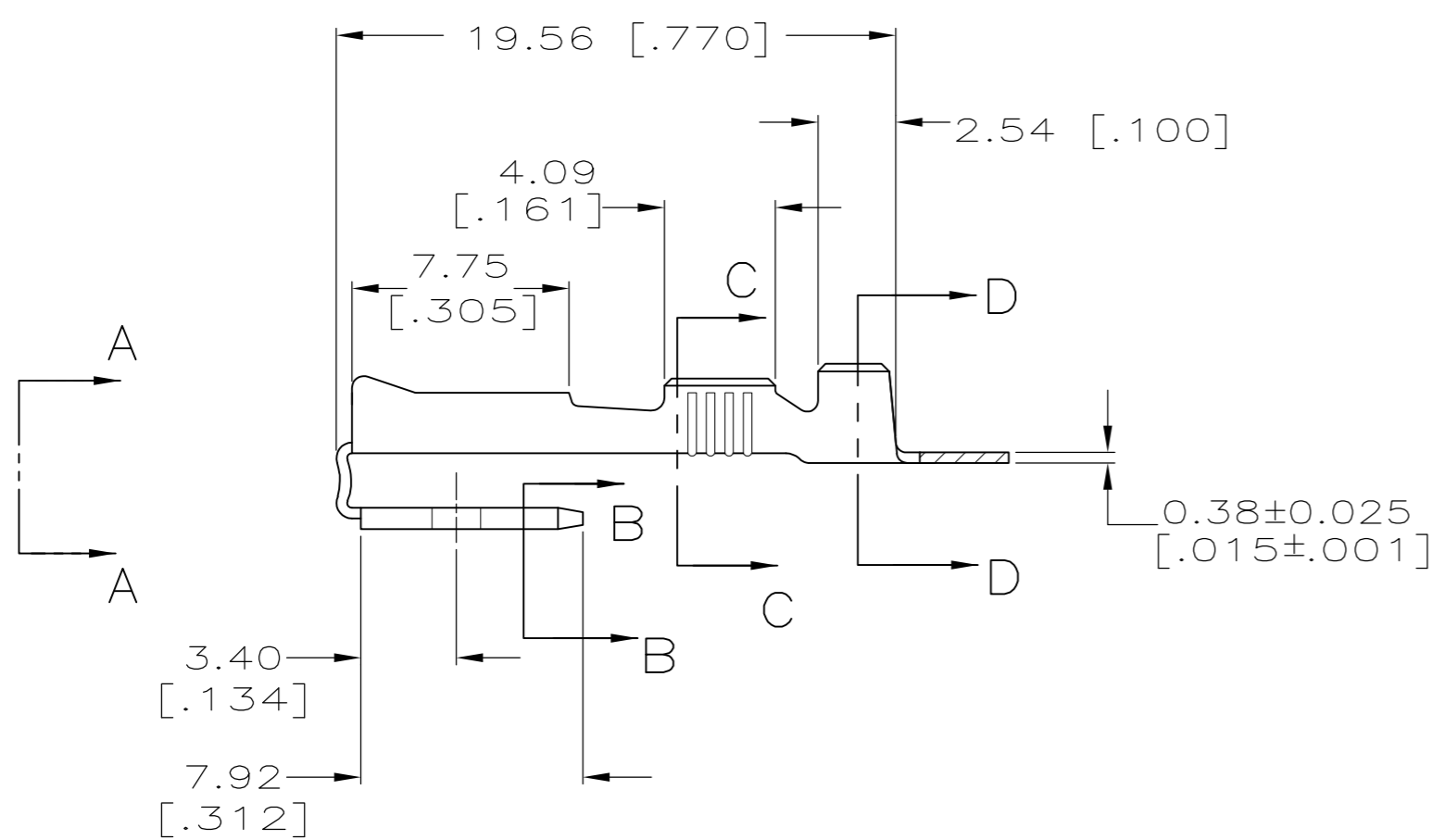
- CONTINUOUS STRIP ON REELS
- MATING TAB THK TO BE  $0.81 \pm 0.025$  [.032±.001]
- WIRE SIZE IS #14-#10 AWG.
- INSULATION RANGE IS 3.81-5.08 [.150-.200] DIA.



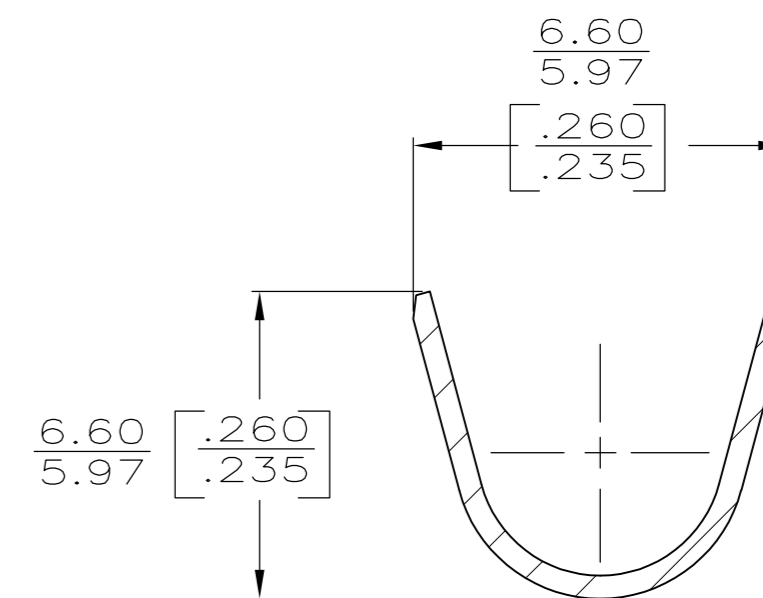
VIEW A-A  
SCALE 8:1



SECTION B-B  
SCALE 8:1



SECTION C-C  
SCALE 8:1



SECTION D-D  
SCALE 8:1

TIN	BRASS	62253-2
-	BRASS	62253-1
FINISH	MATERIAL	PART NO

THIS DRAWING IS A CONTROLLED DOCUMENT.		DWN	JR RUTH	7/12/89	 TE Connectivity			
DIMENSIONS:		CHK	MS FEHER	7/12/89				
mm [INCHES]		APVD	C MEYERS	7/12/89				
TOLERANCES UNLESS OTHERWISE SPECIFIED:		PRODUCT SPEC						
0 PLC ± - 1 PLC ± - 2 PLC ± - 3 PLC ± 0.38 [.015] 4 PLC ± - ANGLES ± -		APPLICATION SPEC	114-2082		NAME	RECEPTACLE, FASTON™ PIGGYBACK, 6.35 [.250] SERIES		
MATERIAL	SEE TABLE	FINISH	SEE TABLE	WEIGHT	-	SIZE	A2	
CUSTOMER DRAWING		SCALE		4:1	SHEET	1 OF 1	REV	H