

1

2

3

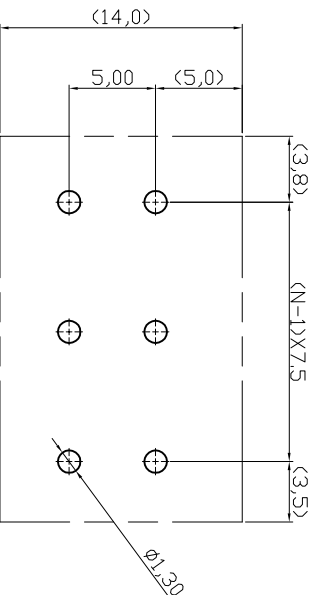
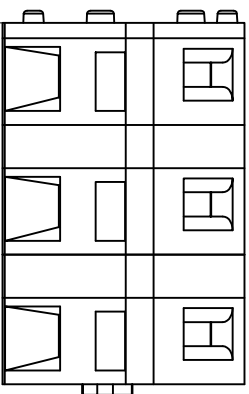
4

5

6

7

A



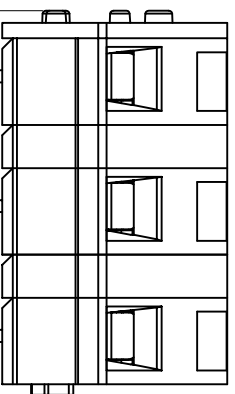
RECOMMENDED PCB LAYOUT

C

(N-1)X7,5+5,9

C

D



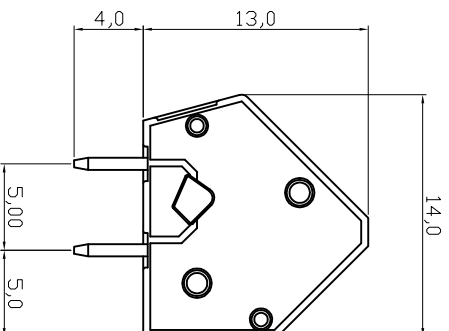
D

E


E

F

N=Number of contacts



Material
Terminal body (Contact pin): Brass
Wire guard: Stainless steel
Surface of solder tail: Tin plated
Insulator (housing): Thermoplastic (UL94V-0), Grey

Electrical
Voltage rating: 300VAC
Current rating: 15A
Wire range:
Solid wire(AWG): 12-28
Stranded wire(AWG): 12-28
Pull force:
Screw:
Wire strip length: 6-7mm
Withstanding Voltage: 1,6kV
Operating temperature: -40°C to +115°C
Soldering temperature: 250°C±10°C/5 Sec
Safety approval :  us

F

G

RoHS compliant



File No.: E349947

G

H

H

Scale	1:1	Customer-No.	
TOLERANCE			
X.	±0.50	Date	Name
X.X	±0.30	Drawn	29.07.2009
X.XX	±0.10	Approved	19.04.2016
DIM	TOL		Winnie
X. °	±1°	Add the UL File No.	
X.X°	±X°	① Drawn	19.04.2016
Angle	TOL	②	Winnie
		Add the UL File No.	
		Id.	Winnie
		Modification	Dean
		Date	29.07.2009
		Name	Dean

Drawing-No.

ASS 3604 CO

ASSMANN WSW-No.
A-TB750-HGXX

rev02

Replace

Sheet

1

2

3

4

5

6

7

SVxxx