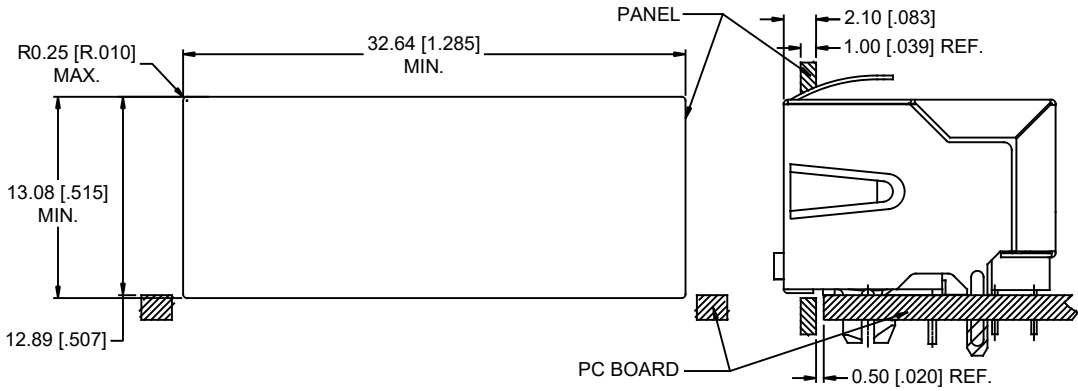
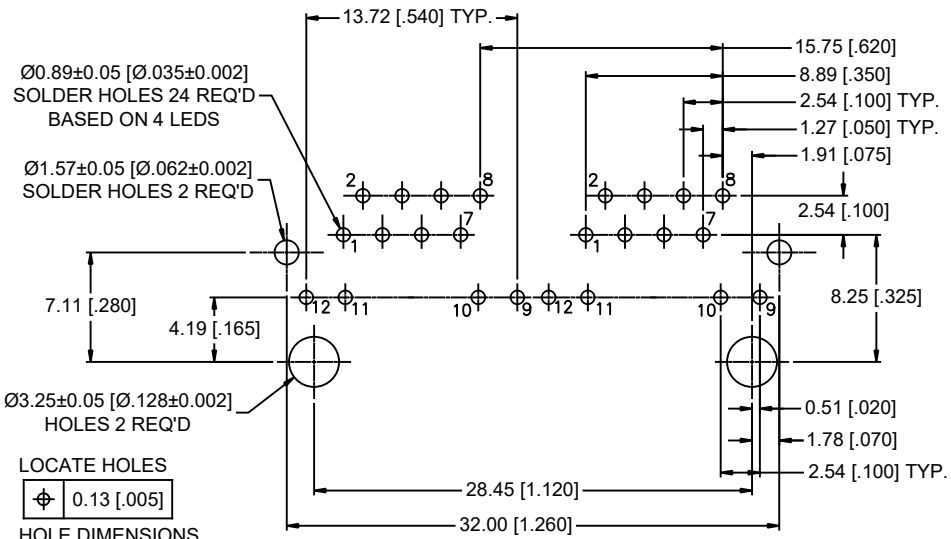
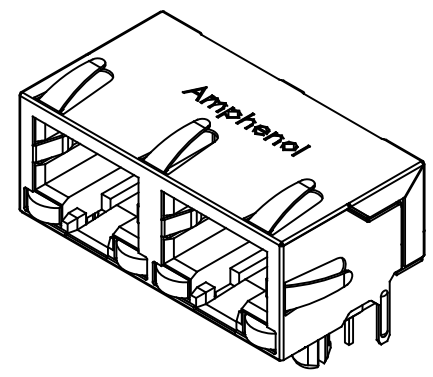
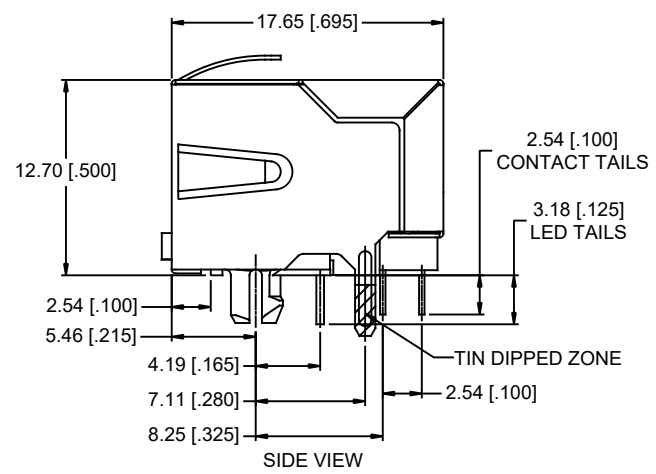
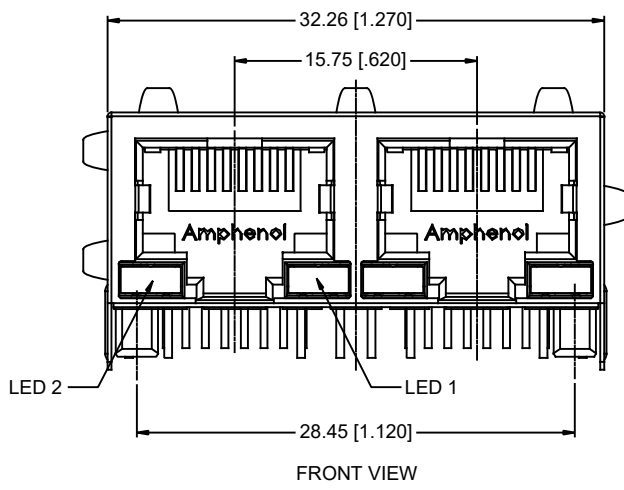


REVISIONS			
REV	DESCRIPTION, ECN, EAR NO.	DATE	APP'D
A	PROPOSAL	APR07/17	L.CHAN
B	FIX THE ERROR	NOV03/21	L.CHAN



- NOTES:**
- MATERIALS:**
 - CONTACTS:** PHOSPHOR BRONZE, PLATING: SELECTIVE GOLD PLATING ON MATING SURFACES. SEE PART NO. FOR THICKNESS. 50 MICRO" MIN. NICKEL OVERALL. 100 MICRO" MIN. MATTE TIN OR GOLD FLASH ON TAILS.
 - HOUSING:** HIGH TEMPERATURE THERMOPLASTIC, FLAMMABILITY RATING UL 94V-0 COLOR - BLACK.
 - SHIELD:** COPPER ALLOY PLATING: NIVKEL WITH TIN DIPPED PCB TAILS.
 - RECOMMENDED SOLDERING TEMPERATURE:** WAVE SOLDERING PEAKED AT 260°C FOR 5-8 SECONDS.

AMPHENOL PART NO.: RJSBE-X38X-C2X

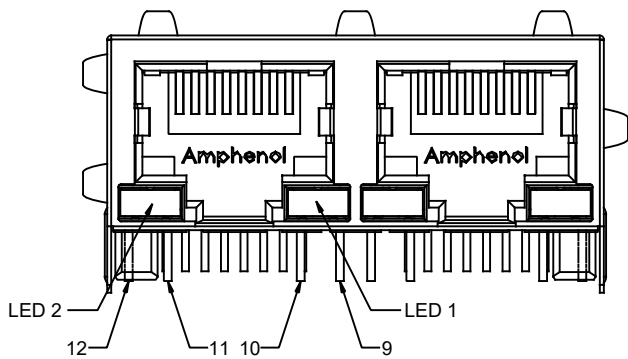
GOLD PLATING OPTION:
 D = 6u" GOLD PLATING
 G = 15u" GOLD PLATING
 J = 30u" GOLD PLATING
 5 = 50u" GOLD PLATING

REFER TO LED OPTIONS DRAWING FOR ORDERING CODES



UNLESS SPECIFIED OTHERWISE	DRAWN	RONNIE.C	APR07/17
PRIMARY UNITS MILLIMETERS	CHECKED	AMY.Z	APR07/17
SECONDARY INCHES	M.E. APP'D		
REFERENCE IN PARENTHESES	Q.A. APP'D		
GENERAL TOLERANCES	DWG APP'D		
1 DECIMAL PLACE	ENG. REL. NO.		
2 DECIMAL PLACES ±0.38	REF.		
3 DECIMAL PLACES	THIRD ANGLE PROJECTION		
ANGULAR DEGREES ±1.5°	DO NOT SCALE DRAWING		

Amphenol Canada Corp. Commercial Products	
2 PORT MODULAR JACK, 8 POSITIONS, 8 CONTACTS, WITH LED OPTIONS, SHIELDED, GOLD PLATING AND LED COLOR OPTIONS - RoHS COMPLIANT	
DWG NO. P-RJSBE-X38X-C2X	REV B
CODE ID NO. 03554	DWG SIZE X SCALE XX:1 SHEET 1 OF 2



EXAMPLE:
AMPHENOL PART NUMBER: RJSBE-X38X-C2

LED COLOR CODE

CODE	LED 2 (LEFT)	LED 1 (RIGHT)	CODE	LED 2 (LEFT)	LED 1 (RIGHT)	CODE	LED 2 (LEFT)	LED 1 (RIGHT)
0	BLOCKED	BLOCKED	9	GREEN	BLOCKED	J	BiC RD/GR	YELLOW
1	YELLOW	GREEN	A	BiC GR/YE	BiC GR/YE	K	YELLOW	BiC GR/OR
2	BLOCKED	GREEN	B	BiC RD/GR	BiC RD/GR	L	BiC GR/YE	RED
3	YELLOW	BLOCKED	C	BiC RD/GR	BiC GR/YE	M	RED	YELLOW
4	GREEN	YELLOW	D	GREEN	BiC GR/YE	N	BiC GR/RD	BiC GR/YE
5	GREEN	GREEN	E	YELLOW	BiC GR/YE	P	GREEN	BiC RD/GR
6	YELLOW	YELLOW	F	BiC GR/YE	YELLOW	R	BiC GR/OR	GREEN
7	RED	GREEN	G	BiC GR/OR	BiC GR/OR	T	RED	RED
8	GREEN	RED	H	BiC GR/YE	GREEN	V	BiC RD/GR	GREEN
			W	ADDITIONAL OPTIONS				

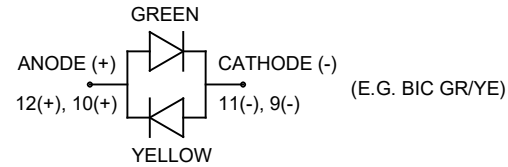
EXAMPLE OF ADDITIONAL LED OPTIONS:
AMPHENOL PART NUMBER: RJSBE-X38W-C2X

ADDITIONAL LED COLOR CODE

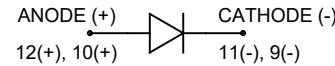
DENOTES ADDITIONAL LED OPTIONS TO BE USED

CODE	LED 2 (LEFT)	LED 1 (RIGHT)	CODE	LED 2 (LEFT)	LED 1 (RIGHT)	CODE	LED 2 (LEFT)	LED 1 (RIGHT)
0	DO NOT USE		5	BLOCKED	YELLOW	A	LOWC YE	LOWC YE
1	RED	BLOCKED	6	RED	BiC RD/GR	B	LOWC YE	LOWC GR
2	BiC GR/OR	YELLOW	7			C	LOWC GR	LOWC YE
3	YELLOW	RED	8	BiC RD/GR	BLOCKED	D	LOWC GR	LOWC GR
4	BLOCKED	RED	9	BiC GR/YE	BLOCKED	M	LOWC RD	LOWC YE
						N	GREEN	BiC GR/OR
						E	GREEN	ORANGE
						F	ORANGE	GREEN
						G	BiC YE/GR	BiC YE/GR
						P	BiC RD/YE	GREEN
						R	BiC RD/YE	BiC RD/YE
						T	BiC GR/YE	BiC RD/GR
						H	BLUE	RED

BI-COLOR LED



SINGLE COLOR LED



LED SCHEMATIC

REVISIONS			
REV	DESCRIPTION, ECN, EAR NO.	DATE	APP'D
A	PROPOSAL	APR07/17	L.CHAN
B	FIX THE ERROR	NOV03/21	L.CHAN

NOTES:

- LED SPECIFICATIONS:
FORWARD VOLTAGE: 1.8~3.4 VOLTS.
REVERSE VOLTAGE: 5.0 VOLTS MAX.
LUMINOUS INTENSITY: 3~60 mcd (AT If=20mA)
STORAGE TEMPERATURE: -55° TO 85° C
PLATING ON TAILS: TIN OR TIN/COPPER ALLOY OVER SILVER
- PRIMARY COLOR FOR BI-COLOR LEDS IN STANDARD ANODE/CATHODE CONFIGURATION IS:
RED-GREEN= RED
RED-YELLOW= RED
GREEN-YELLOW= GREEN
- LEGEND
BiC=BI-COLOR LED
LOWC=LOW CURRENT LED
YE=YELLOW
GR=GREEN
RD=RED
OR=ORANGE



UNLESS SPECIFIED OTHERWISE	DRAWN	RONNIE.C	APR07/17
PRIMARY UNITS MILLIMETERS	CHECKED	AMY.Z	APR07/17
SECONDARY INCHES	M.E. APP'D		
REFERENCE IN PARENTHESES	Q.A. APP'D		
GENERAL TOLERANCES		DWG APP'D	
1 DECIMAL PLACE	ENG. REL. NO.		
2 DECIMAL PLACES ±0.38	REF.		
3 DECIMAL PLACES			
ANGULAR DEGREES ±1.5°	THIRD ANGLE PROJECTION		

Amphenol Canada Corp. Commercial Products	
2 PORT MODULAR JACK, 8 POSITIONS, 8 CONTACTS, WITH LED OPTIONS, SHIELDED, GOLD PLATING AND LED COLOR OPTIONS - RoHS COMPLIANT	
DWG NO. P-RJSBE-X38X-C2X	REV B
CODE ID NO. 03554	DWG SIZE X SCALE XX:1 SHEET 2 OF 2