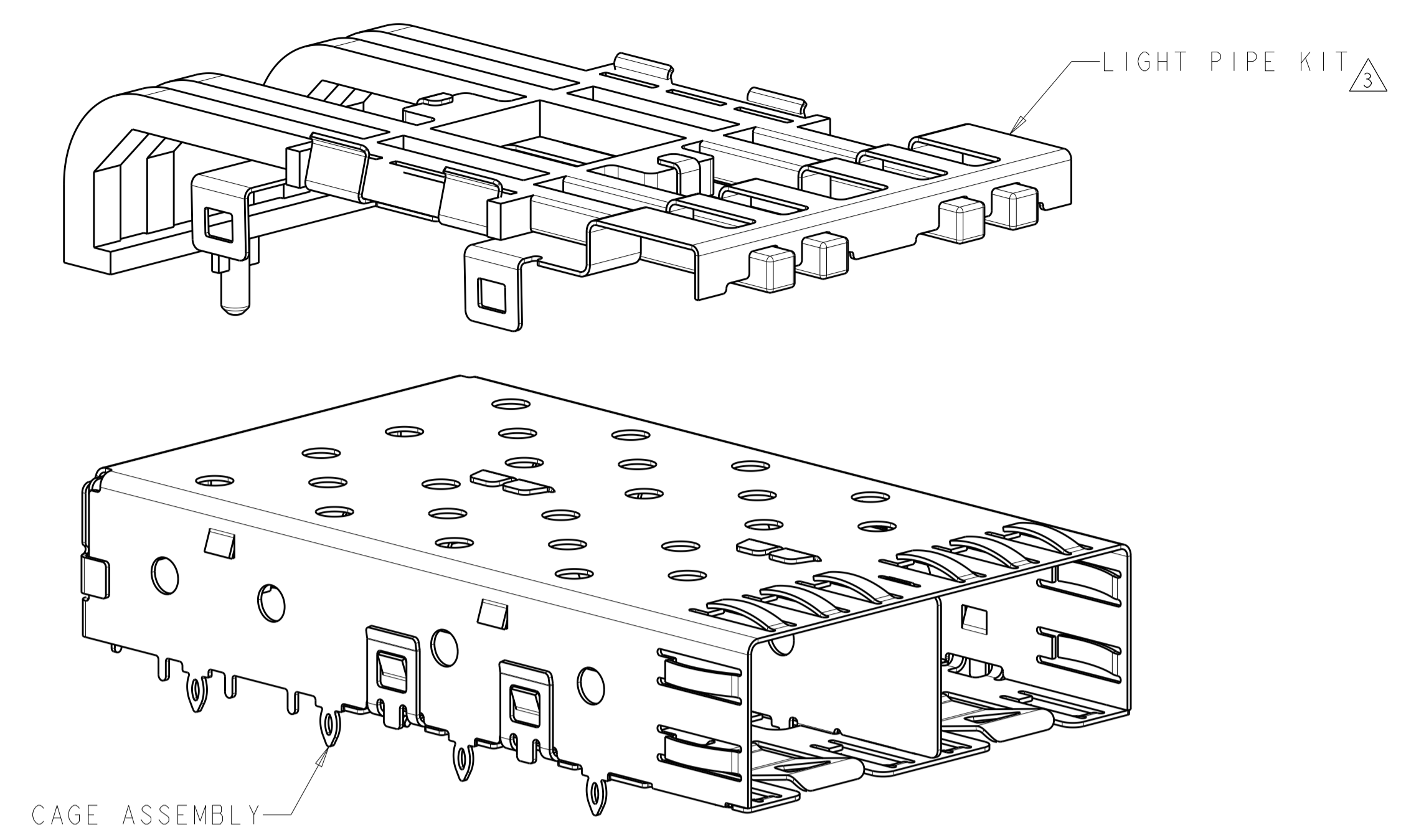
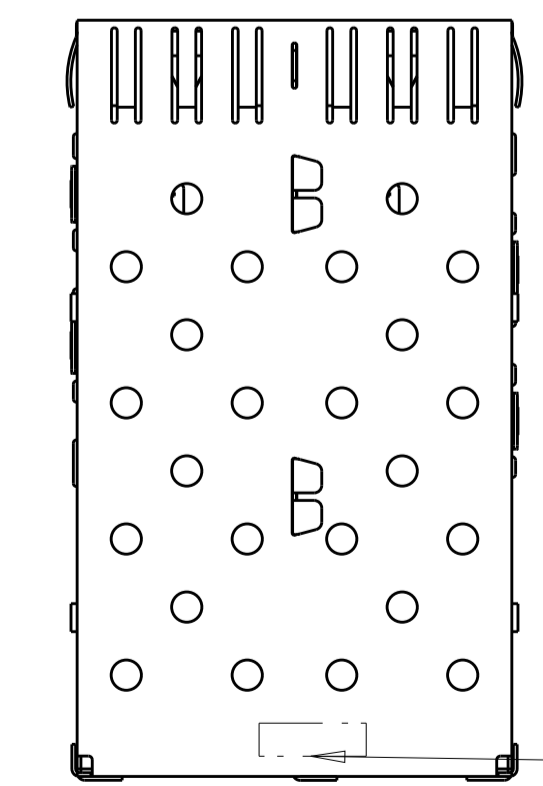
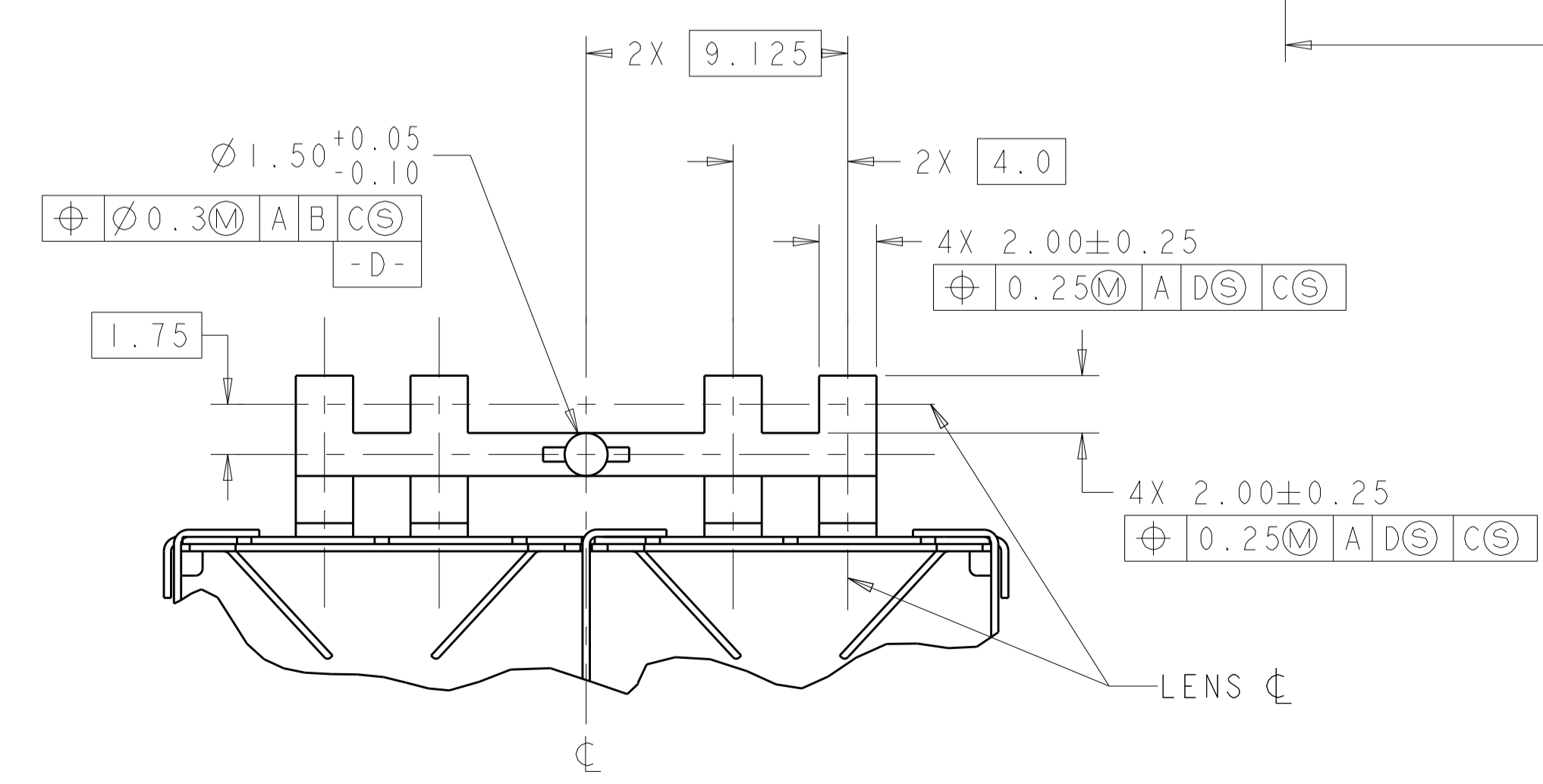
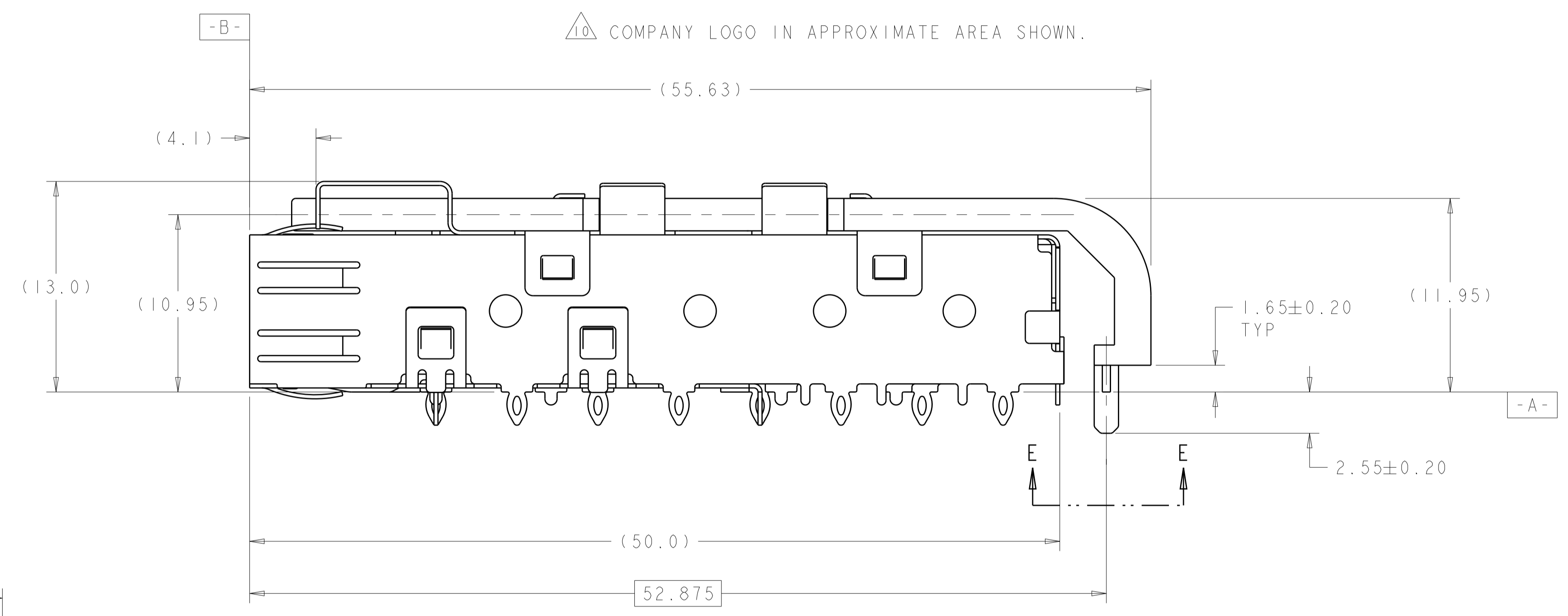
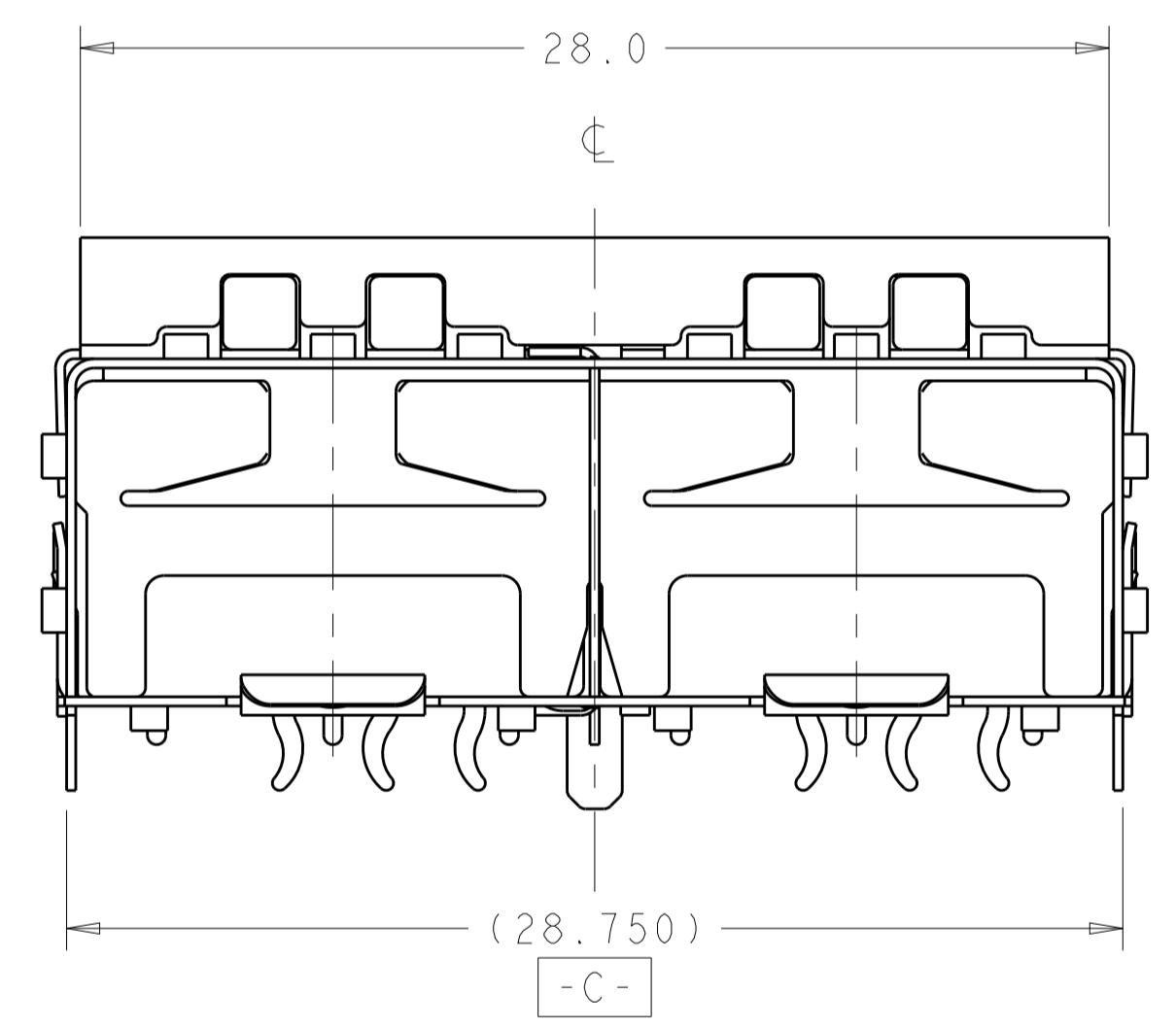


LOC	DIST	REVISIONS					
GP	00	P	LTN	DESCRIPTION	DATE	DWN	APVD
		E1		REVISED PER ECO-11-004835	18APR2011	RK	HMR
		F		REVISED PER ECO-14-000886	20FEB2014	JW	SH
		F1		REVISED PER ECO-14-010419	11JUL2014	JW	SH
		G		REVISED PER ECO-15-013594	22SEP2015	JW	SH



- △ PADS AND VIAS CHASSIS GROUND.
- △ DATUM AND BASIC DIMENSIONS ESTABLISHED BY CUSTOMER.
- △ LIGHT PIPE KIT WHICH IS SEPARATE FROM CAGE ASSEMBLY. KIT TO BE ATTACHED AFTER SEATING OF 1761014-1&3 ON PC BOARD.
- △ DATE CODE AND PART NUMBER IN APPROXIMATE AREA SHOWN LABEL ON CAGE ASSEMBLY WILL HAVE PART NUMBER 1761014-1 OR -3.
- 5. REFERENCE STYLE 1 ON APPLICATION SPECIFICATION 114-13165 FOR ADDITIONAL INFORMATION ON CAGE ASSEMBLIES WITH LIGHT PIPES.
- △ REFERENCE APPLICATION SPEC 114-13120, HOLE A, FOR RECOMMENDED DRILL HOLE DIAMETER AND PLATING THICKNESSES.
- △ REFERENCE APPLICATION SPEC 114-13120, HOLE B, FOR RECOMMENDED DRILL HOLE DIAMETER AND PLATING THICKNESSES.
- △ PATTERN REPEATS FOR EACH PORT. SPACING BETWEEN PORTS IS 14.25mm.
- △ MINIMUM PC BOARD THICKNESS = 1.50mm.
- △ COMPANY LOGO IN APPROXIMATE AREA SHOWN.

1761007-1&2
SCALE 4:1



SUPERSEDED BY:
1761007-2

1761011-3	1761014-3	1X2 ASSEMBLY	1761007-2
1761011-1	1761014-1	1X2 ASSEMBLY	1761007-1
LIGHT PIPE KIT	CAGE ASSEMBLY	DESCRIPTION	PART NO

THIS DRAWING IS A CONTROLLED DOCUMENT.

DIMENSIONS: mm

TOLERANCES UNLESS OTHERWISE SPECIFIED:

0 PLC	±0.10
1 PLC	±0.10
2 PLC	±0.10
3 PLC	±0.10
4 PLC	±0.10
ANGLES	±0.10
FINISH	±0.10

MATERIAL: -

Customer Drawing

DWN: JIM VAN SCOOC 16JAN2004
CHK: M. PHILLIPS 16JAN2004
APVD: M. PHILLIPS 16JAN2004

NAME: SFP
PRODUCT SPEC: 108-1950
APPLICATION SPEC: 114-13120

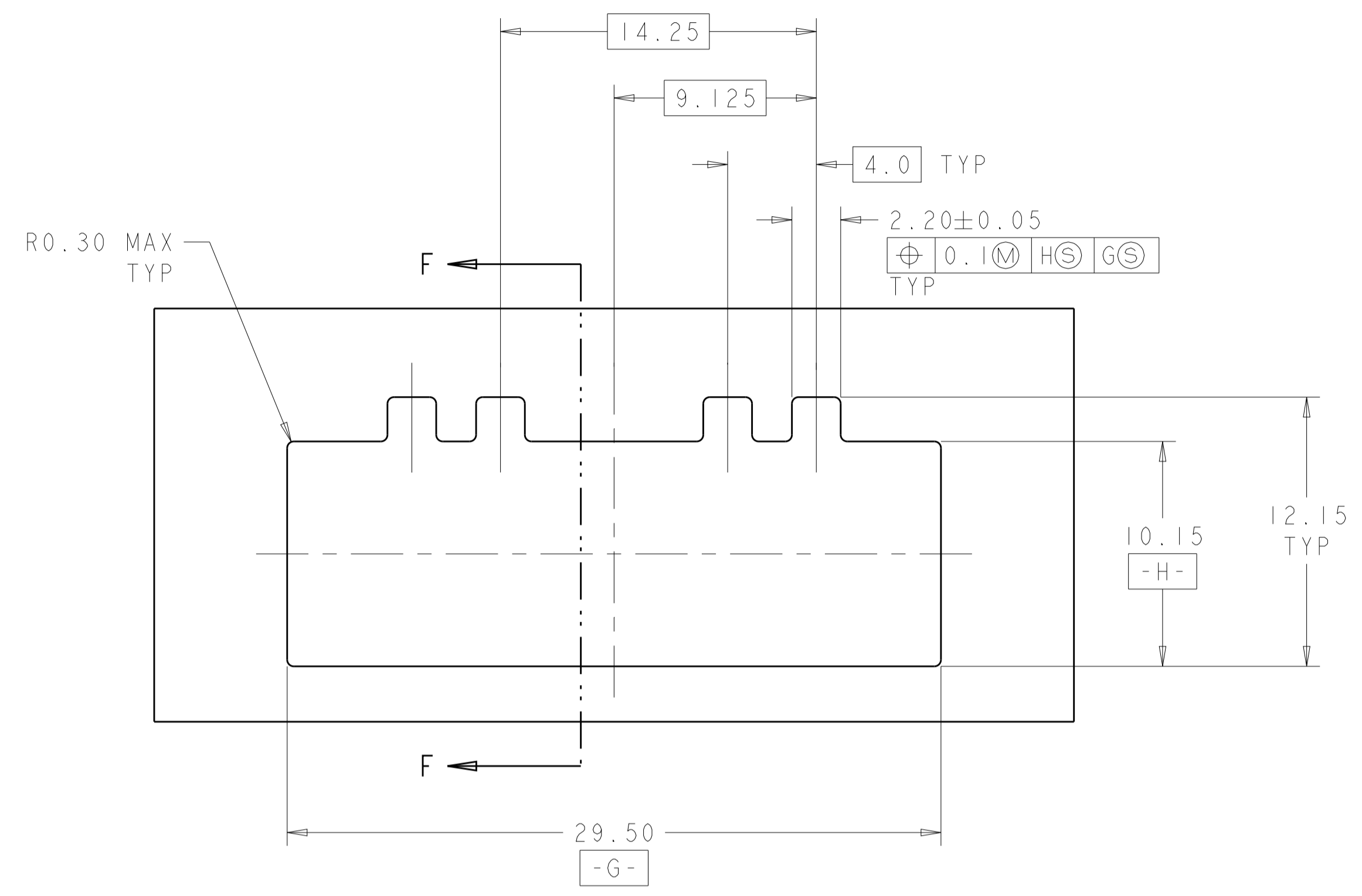
SIZE: A1
CAGE CODE: 100779
DRAWING NO: 1761007

RESTRICTED TO: -

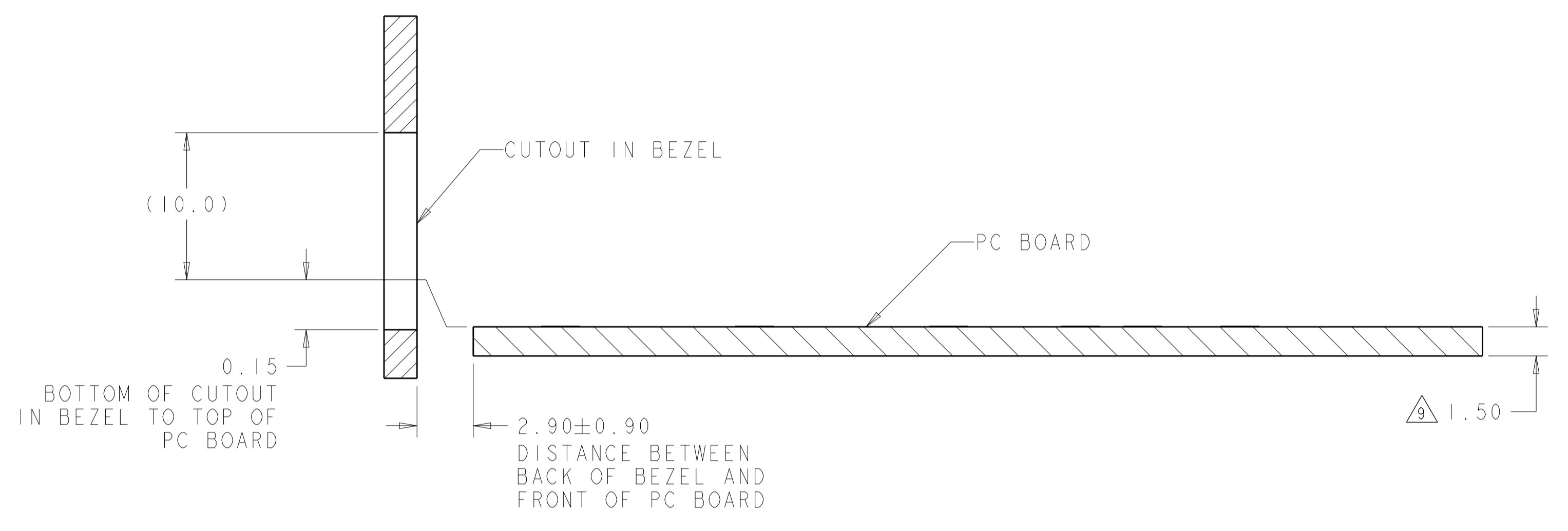
SCALE: 5:1 SHEET: 1 OF 3 REV: G

STE TE Connectivity

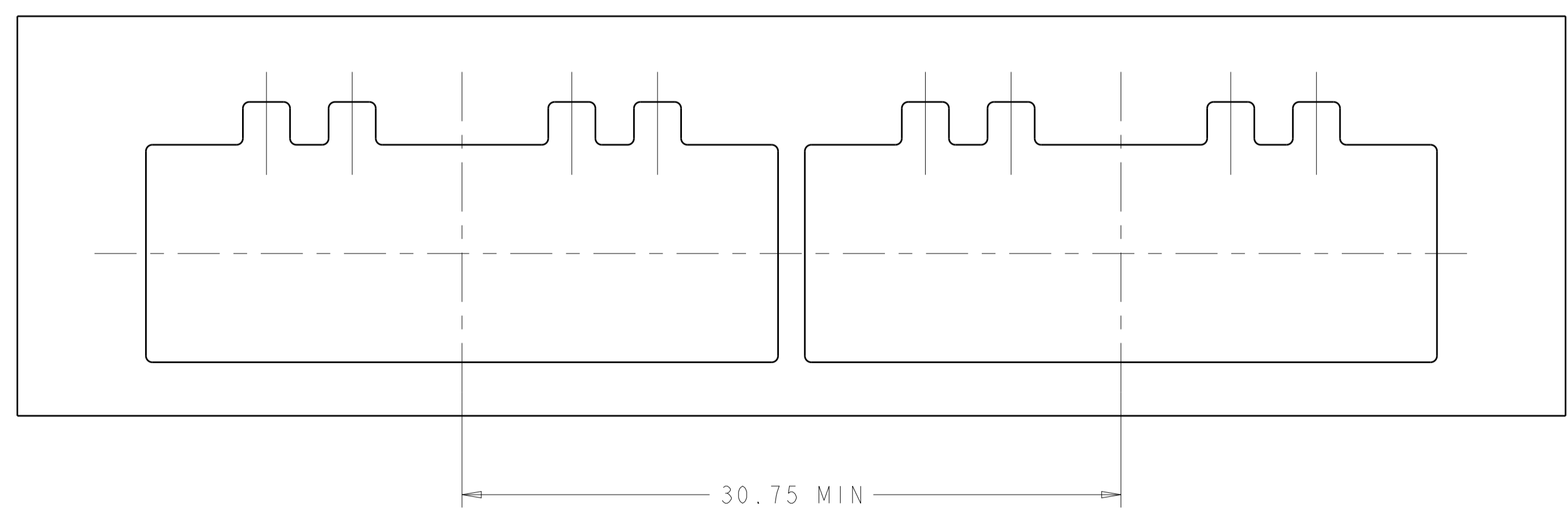
LOC	DIST	REVISIONS			
P	LTN	DESCRIPTION	DATE	DMN	APVD
GP	00	SEE SHEET 1	-	-	-



RECOMMENDED BEZEL CUTOUT

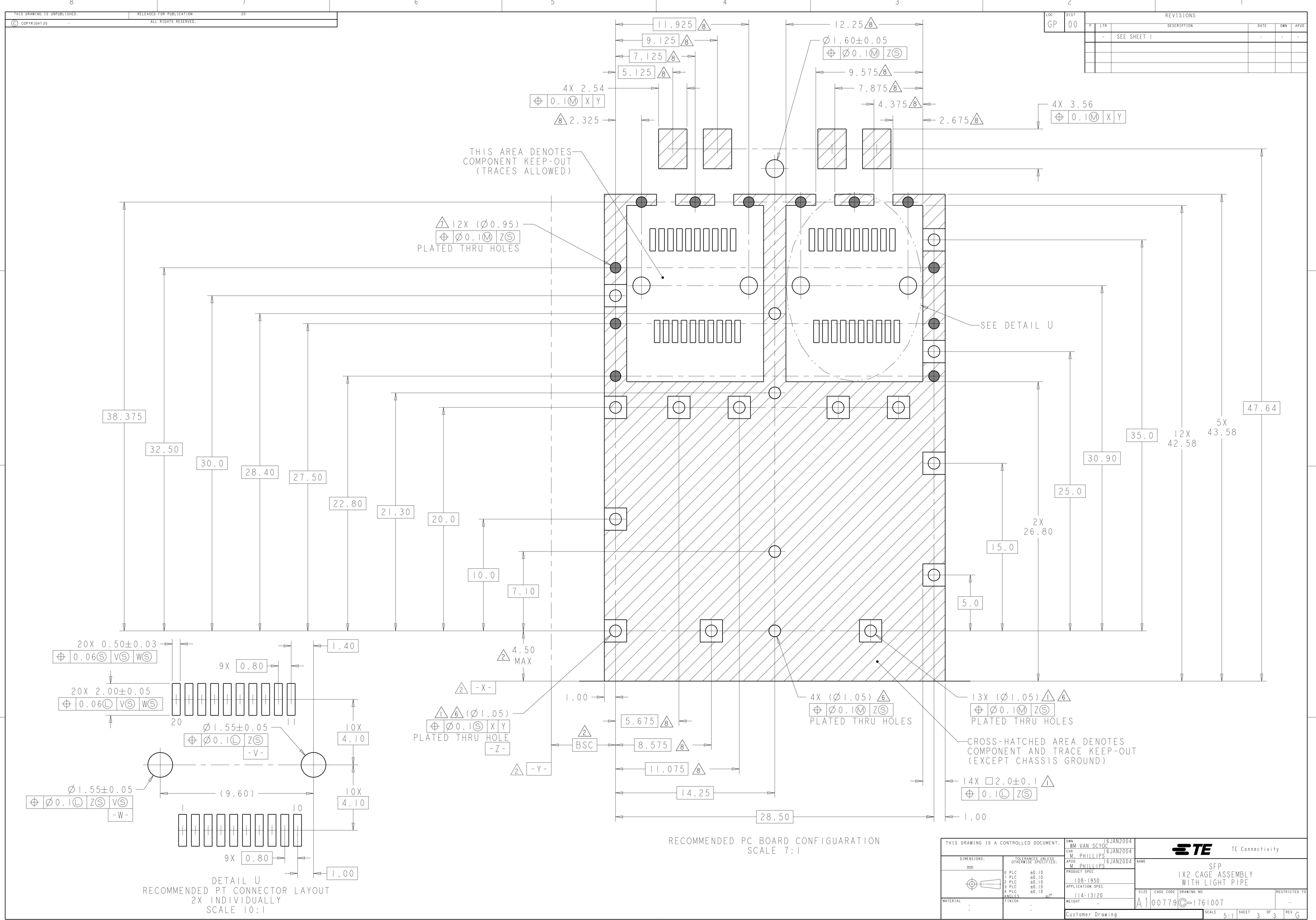


SECTION F-F
RECOMMENDED BEZEL CONFIGURATION



THIS DRAWING IS A CONTROLLED DOCUMENT.		DMN: JM VAN SCOOC 16 JAN 2004	 TE Connectivity
DIMENSIONS: mm		CHK: M. PHILLIPS 16 JAN 2004	
TOLERANCES UNLESS OTHERWISE SPECIFIED:		APVD: M. PHILLIPS 16 JAN 2004	NAME: SFP
0 PLC	±0.10	PRODUCT SPEC	1X2 CAGE ASSEMBLY
1 PLC	±0.10	APPLICATION SPEC	WITH LIGHT PIPE
2 PLC	±0.10	SIZE: 114-13120	RESTRICTED TO:
3 PLC	±0.10	WEIGHT: -	A100779C=1761007
4 PLC	±0.10	Customer Drawing	SCALE: 5:1 SHEET 2 OF 3 REV G
ANGLES	±2°		
FINISH	-		

LOC		DIST		REVISIONS				
GP	00	P	LTN	DESCRIPTION	DATE	DMN	APVD	
		-		SEE SHEET 1				



THIS AREA DENOTES COMPONENT KEEP-OUT (TRACES ALLOWED)

12X (Ø0.95)
 Ø0.1M ZS
 PLATED THRU HOLES

SEE DETAIL U

CROSS-HATCHED AREA DENOTES COMPONENT AND TRACE KEEP-OUT (EXCEPT CHASSIS GROUND)

RECOMMENDED PC BOARD CONFIGURATION
 SCALE 7:1

DETAIL U
 RECOMMENDED PT CONNECTOR LAYOUT
 2X INDIVIDUALLY
 SCALE 10:1

THIS DRAWING IS A CONTROLLED DOCUMENT.		DMN: JIM VAN SCOOC 16 JAN 2004	TE Connectivity
DIMENSIONS: mm		CHK: M. PHILLIPS 16 JAN 2004	
TOLERANCES UNLESS OTHERWISE SPECIFIED:		APVD: M. PHILLIPS 16 JAN 2004	NAME: SFP
0 PLC	±0.10	PRODUCT SPEC	1X2 CAGE ASSEMBLY WITH LIGHT PIPE
1 PLC	±0.10	APPLICATION SPEC	SIZE: CAGE CODE DRAWING NO
2 PLC	±0.10	114-13120	RESTRICTED TO
3 PLC	±0.10	WEIGHT	A100779C=1761007
4 PLC	±0.10	Customer Drawing	SCALE: 5:1 SHEET 3 OF 3 REV G
ANGLES	±0.10		
FINISH	±0.10		