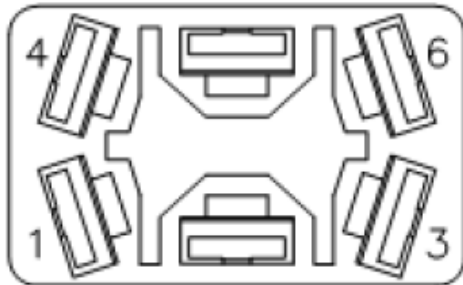
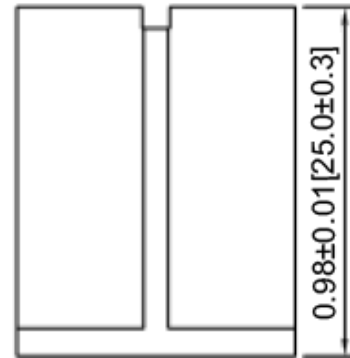
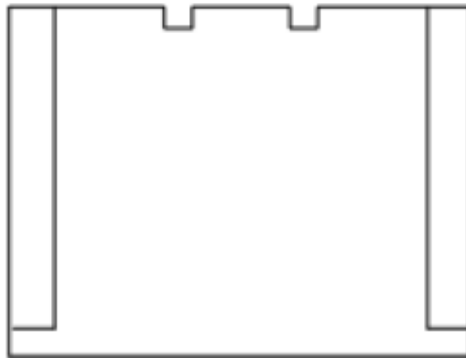
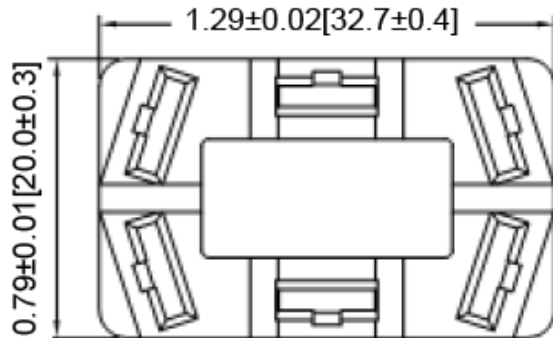


Mechanical Dimensions: Inches [mm]

Tolerances ± 0.012 [0.3] Unless Otherwise Specified



Material Specifications

Housing	Nylon66 101L, 94V-2
Applicable wire	AWG#14-18
Applicable terminals	6.35mm (.250")

Rev	Date of issue	Revision Notes	Designed	Approved
B	02-26-2020	Initial Drawing	RC	OF