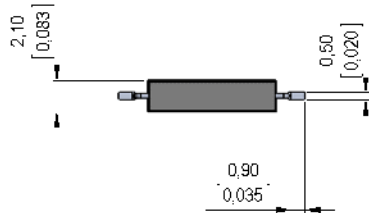
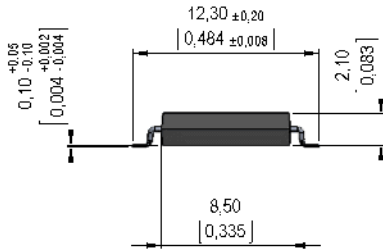
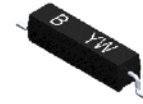


Dimensions mm[inch]
tolerances according to DIN ISO 2768-m
Toleranzen gem. DIN ISO 2768-m



Isometric
Scale 2:1
Maßstab 2:1

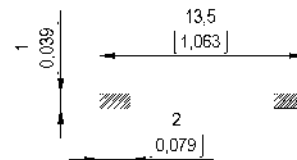


Marking

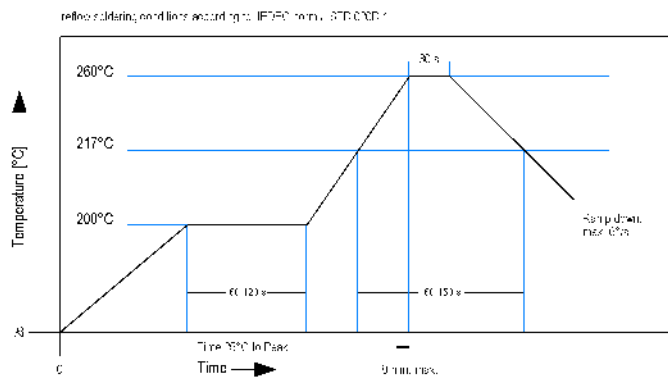
according to EN60062/factory code
gem. EN60062/Fertigungsstätte



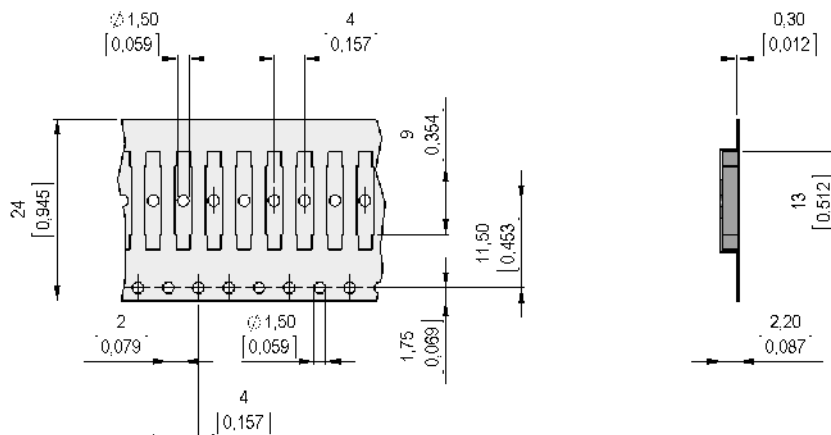
Recommended PCB Pad Layout



Solder Reflow Profile



Packaging





Europe: +49 / 7731 8399 0

| Email: info@standexmeder.com

Item No.:

USA: +1 / 508 295 0771

| Email: salesusa@standexmeder.com

9171800022

Asia: +852 / 2955 1682

| Email: salesasia@standexmeder.com

Item:

MK17-B-2

| Magnetic properties | Conditions | Min | Typ | Max | Unit |
|---------------------------------------|---|------|--------|-----|------|
| Pull-In | at 20°C | 28 | | 48 | |
| Test equipment | | | KMS-11 | | |
| Pull-In in milliTesla (modified conta | MS150 - phys. caused tolerance +/- 0,1mT | 1,63 | | 2,4 | mT |
| Test equipment | | | MS-150 | | |

| Contact data 80 | Conditions | Min | Typ | Max | Unit |
|---------------------------|--|-----|---------|-----|------|
| Contact-material | | | Rhodium | | |
| Contact-rating | Any DC combination of V & A not to exceed their individual max.'s | | | 10 | W |
| Switching voltage | DC or Peak AC | | | 100 | V |
| Carry current | DC or Peak AC | | | 0,5 | A |
| Switching current | DC or Peak AC | | | 0,5 | A |
| Contact resistance static | Measured with 40% overdrive Start Value | | | 250 | mOhm |
| Breakdown voltage | according to IEC 255-5 | 150 | | | VDC |

| Special Product Data | Conditions | Min | Typ | Max | Unit |
|----------------------|------------|-----|--------------------|-----|------|
| Housing material | | | epoxy resin | | |
| Material | | | EN 60335-1 conform | | |

| Environmental data | Conditions | Min | Typ | Max | Unit |
|-----------------------------|-----------------------------------|-----|--------------|-----|------|
| Shock | 1/2 sine wave duration 11ms | | | 30 | g |
| Vibration | from 10 - 2000 Hz | | | 20 | g |
| Operating temperature | | -40 | | 130 | °C |
| Storage temperature | | -50 | | 130 | °C |
| Soldering Temperature Tsold | Reflow acc.IPC/JEDEC J-STD-020D.1 | | | 260 | °C |
| Washability | | | fully sealed | | |

| General data | Conditions | Min | Typ | Max | Unit |
|-------------------|--------------------|-----|------|-----|------|
| Component marking | general descripton | | B YM | | |

Modifications in the sense of technical progress are reserved

Designed at: 03.11.08 Designed by: THAUKE

Approval at: 05.11.08 Approval by: JHEYDER

Last Change at: 29.12.14 Last Change by: AAI

Approval at: 28.01.15 Approval by: AWEBER

Version: 17