

4

3

2

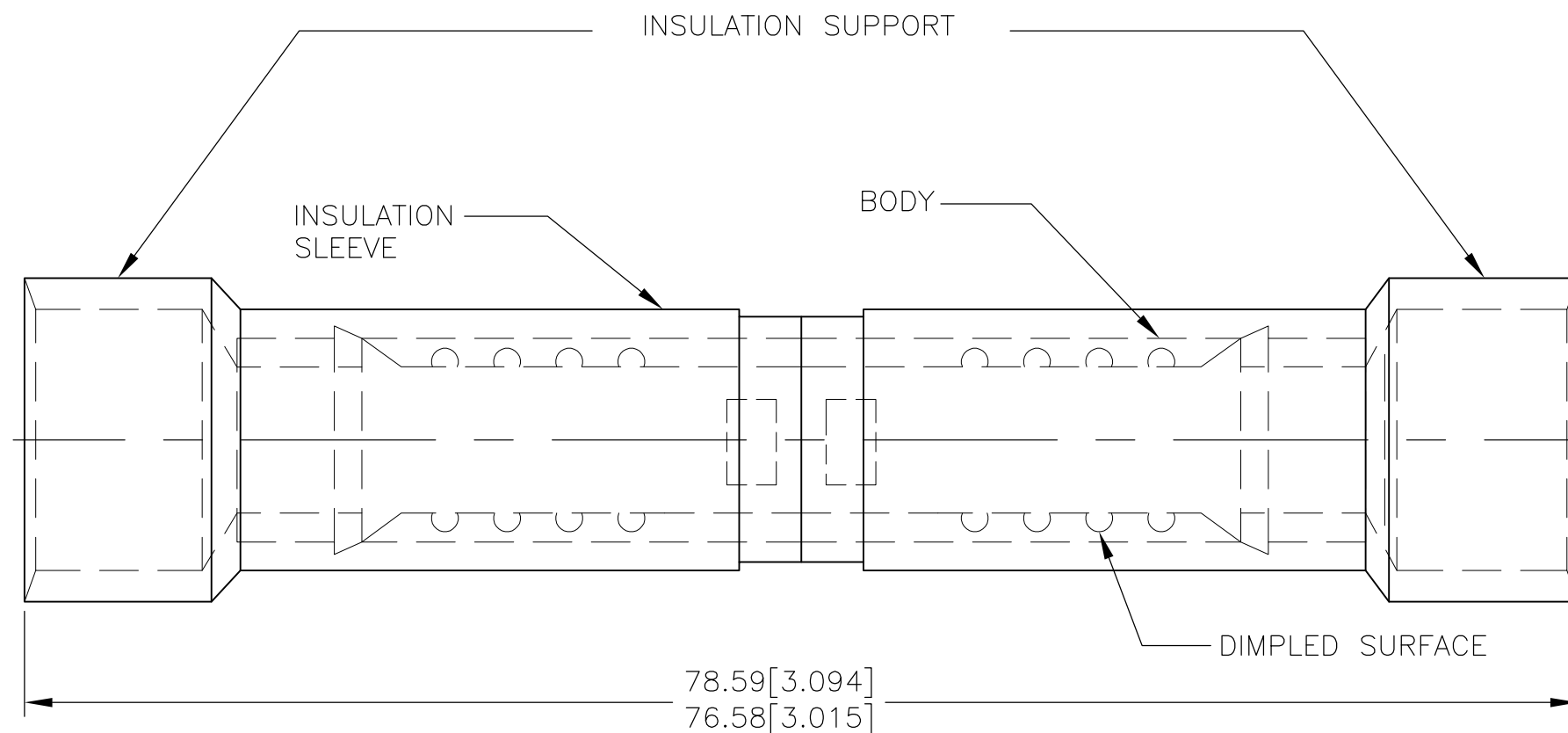
1

THIS DRAWING IS UNPUBLISHED. RELEASED FOR PUBLICATION - , - .
 © COPYRIGHT - By - ALL RIGHTS RESERVED.

LOC	DIST	REVISIONS					
G	14	P	LTR	DESCRIPTION	DATE	DWN	APVD
		F		REVISED PER ECO-14-019230	04APR2015	NK	DR

AMP
WIRE RANGE

2 AWG
STRANDED



1 WIRE INSULATION DIA 15.11 [.595] MAX.

OBSOLETE

AMP INCORPORATED CUSTOMER SERVICE SYSTEMS		MAX RECOMMENDED OPERATING TEMPERATURE: 105° C	THIS DRAWING IS A CONTROLLED DOCUMENT.		DWN S.S. GOULDEN 8-30-93	TE TE Connectivity		50	LOOSE PC	324663			
FOR ADDITIONAL PRODUCT INFORMATION OR COPIES OF DRAWINGS AND TECHNICAL DOCUMENTS	PRODUCT INFORMATION CENTER 1-800-522-6752	VOLTAGE RATING: 600 V MAX	DIMENSIONS: mm[INCHES]	TOLERANCES UNLESS OTHERWISE SPECIFIED:	CHK R. HERSEY 8-30-93	NAME SPLICE, BUTT, MULTIPLE TO MULTIPLE, TERMINYL, WIRE SIZE: 2 AWG		QTY	PACKAGE TYPE	PART NO			
FOR APPLICATION TOOLING INFORMATION	TOOLING ASSISTANCE CENTER 1-800-722-1111	CIRCULAR MIL AREA: 26.65-42.41mm ² [52,600-83,700] STRANDED		0 PLC ± - 1 PLC ± - 2 PLC ± 0.20[.008] 3 PLC ± - 4 PLC ± - ANGLES ± -	APVD B. BARE 8-30-93	PRODUCT SPEC		SIZE	CAGE CODE	DRAWING NO	RESTRICTED TO		
FOR ORDER ENTRY	1-800-526-5142		MATERIAL COPPER PER ASTM B-152 NYLON, COLOR:RED	FINISH TIN PLATE PER MIL-T-10727	PRODUCT SPEC	APPLICATION SPEC		A3	00779	C-324663			
CUSTOMER DRAWING								SCALE	NTS	SHEET	1 of 1	REV	F