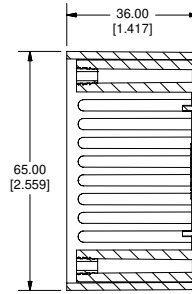
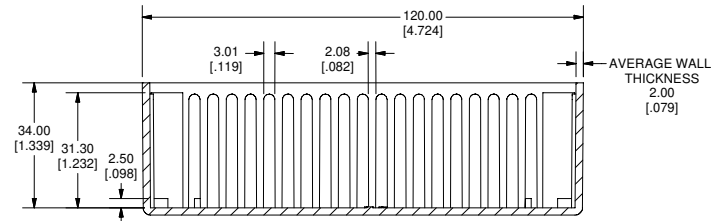


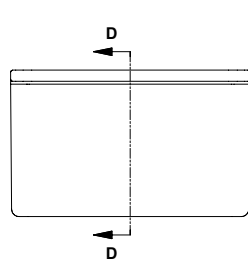
TOP VIEW OF BOX



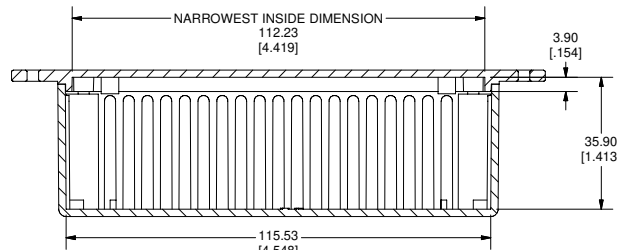
SECTION A-A



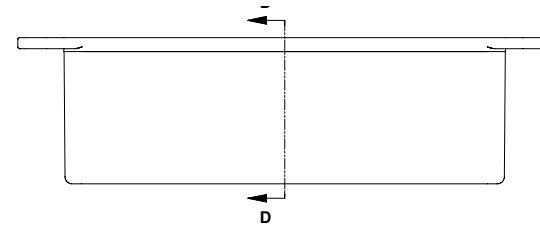
SECTION B-B



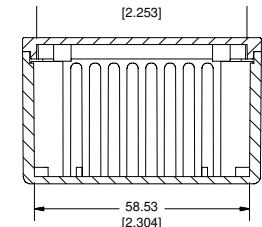
END VIEW OF ENCLOSURE



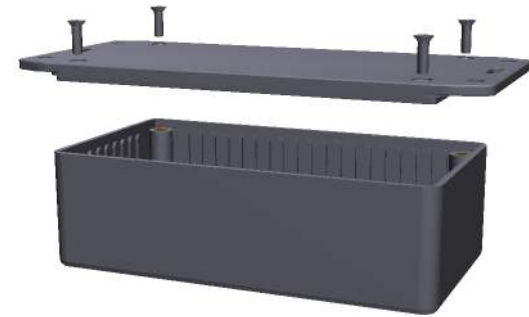
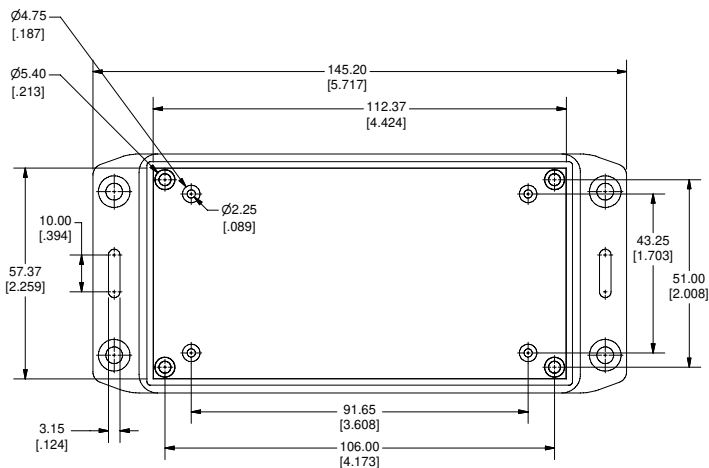
SECTION D-D



SIDE VIEW OF ASSEMBLY



SECTION D-D



Note:
Enclosures can be Factory Modified (Milling, Drilling, Printing etc.)
Contact Factory mjm@hammondmfg.com for quotes
Solid models of this enclosure available in STEP or IGES Format.

PART NUMBERS		
1591CFL Flanged Lid Enclosures		
Material	Colour	Part Number
FR ABS	Black	1591CFLBK
UL94 - V0	Grey	1591CFLGY
GP ABS	Black	1591CSFLBK
Accessories		
Description	Part Number	
PC Board Card Adapters	See Accessories Section	
Clear Lids - clear, flame retardant polycarbonate - Lid ONLY	1591CC	
Replacement Screws - Flat Head Phillips Nickel Plated Pkg of 100	1591MS100 1591MS100BK (Black)	
GP ABS	Self Tapping Pkg of 100 1591TS100 1591TS100BK (Black)	
Recommended Torque on Fasteners (no lubrication)		
M3 - 0.5 x 10mm Screws	30-40 cN*m	
#4 x 0.5 Screws	30-40 cN*m	

