

ATEX HAZARDOUS-AREA RATED CONTAINER HEATERS AND CONTROLLER

Hazardous-area rated for Gas And Dust

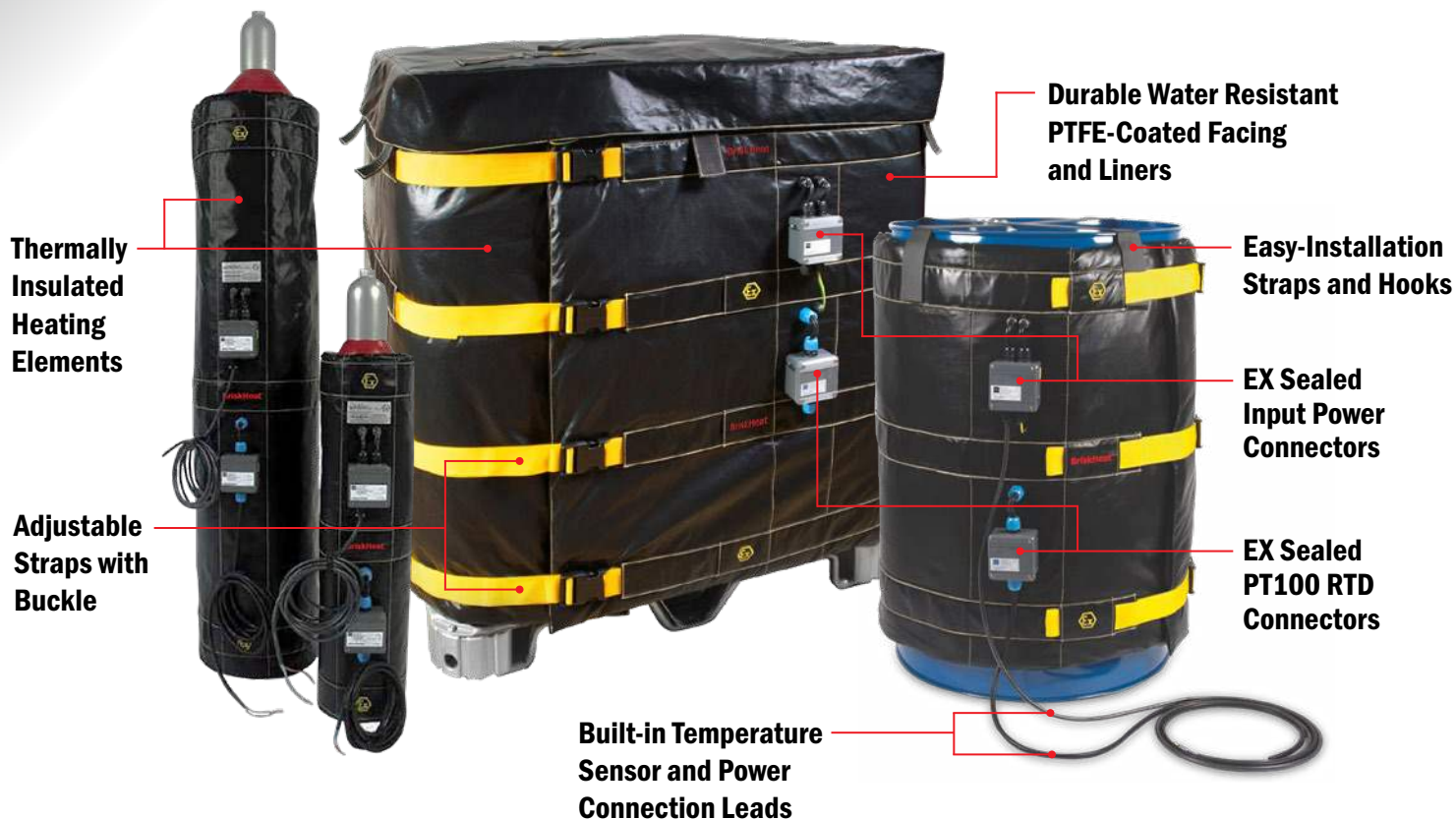
Suitable for use in outdoor and wet environments - IP 65



- Drum Heaters
- IBC Heaters
- Gas Bottle Warmers
- Digital Controllers

ATEX HEATERS FOR BULK STORAGE CONTAINERS

- Drum Heaters
- IBC Heaters
- Gas Bottle Warmers



Product Features:

- **ATEX Certified:**
Zones 1/2 (gas) 21/22 (dust)
- **Suitable for use in outdoor and wet environments - IP 65**
- **Wide range of applications:**
Viscosity control, Freeze Protection, Temperature Maintenance
- **Operating Temperature:**
Up to 200°C (392°F) - T3
- **2-RTD sensor system:**
Process control temperature, high limit temperature

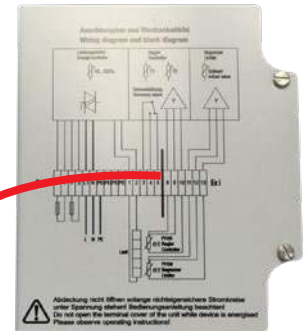
ATEX DIGITAL CONTROLLER WITH LIMITER

Easy-to-Program
Power Selector

Large Digital
Temperature Controller
and Temperature
Limiter Displays

LED Indicator Lights for
Visual On/Off and
Alarm Status

Clear Glass Window
for easy reading of
temperature display

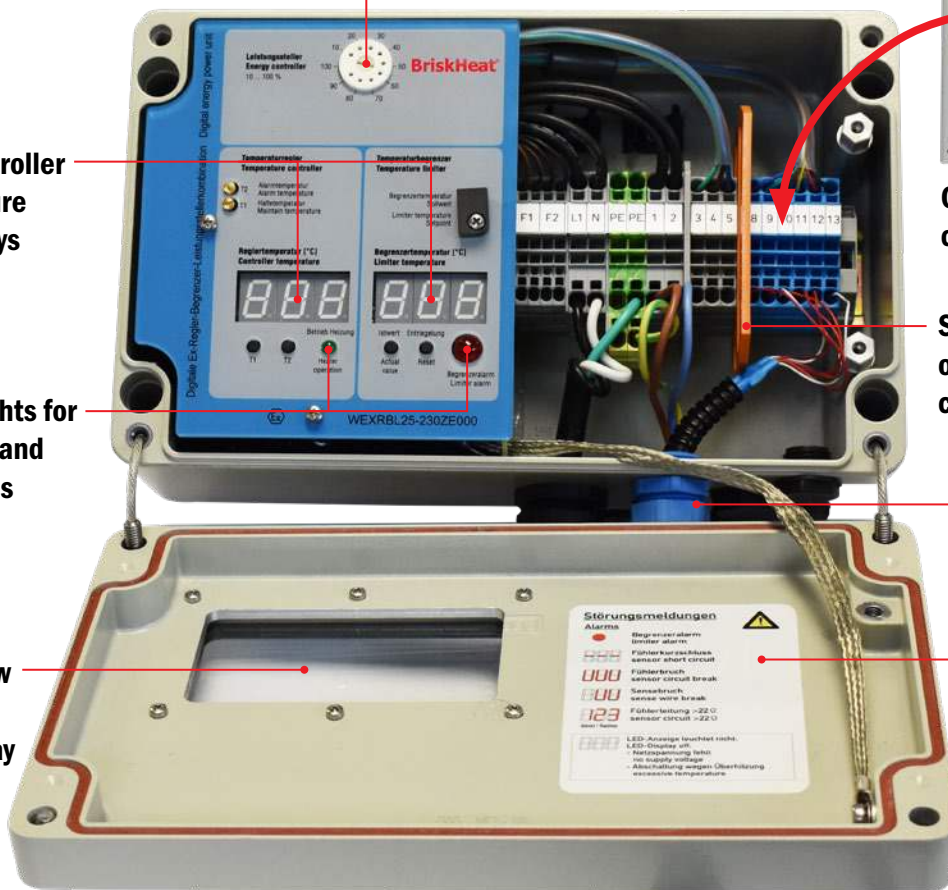


Cover with convenient
connection diagram

Separation
of intrinsically safe
circuit (Ex i)

Cable Protection Glands
includes reserve screw
connector

Easy-Access Information
Fault Report



Product Features:

- ATEX Certified
- Controller and limiter in one enclosure
- On/Off control
- Robust aluminum enclosure rated IP64 with mounting plate and hardware
- 2 RTD sensor connections (control and limit)
- Sensor break and short circuit signal indicators
- 230 VAC Nominal Voltage
- Versatile 25 amp load capacity
- Compact Design: 260 mm x 160 mm x 135 mm (10.2 in x 6.3 in x 5.3 in)
- Operating temperature: 0-450°C (32-842°C)

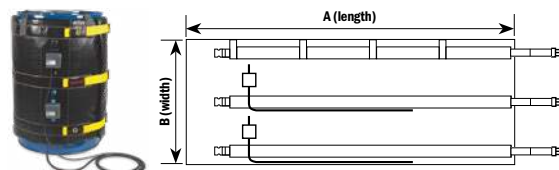
For Use with ATEX Drum Heaters, IBC Heaters, and Gas Bottle Warmers

ATEX HEATERS AND CONTROLLER

Ordering Information:

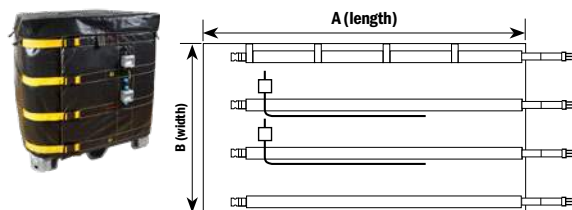
ATEX Full-Coverage Drum Heater:

Capacity	A (Length)	B (Height)	C (Circumference)	Part No.
200-220 litre (55 gal)	2100 mm (87.7 in)	800 mm (31.5 in)	1800-2100 mm (70.9 - 87.7 in)	WEXHD200-230ZE800-0210BHT3



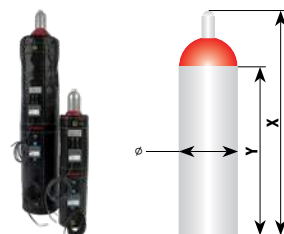
ATEX Wrap-Around IBC TOTE Tank Heater:

Capacity	A (Total length)	B (Height)	(Heated length)	Part No.
1000 litre (250 gal)	4400 mm (173.2 in)	1000 mm (39.4 in)	3900 mm (153.4 in)	WEXHCIBC-230ZE100-0440BHT3
IBC Tote Tank cover: minimizes heat loss and improves efficiency				WEXHIIBC-0000BHT3



ATEX Gas Cylinder Warmers:

Capacity	X (Total Height)	Y (Cylinder Height)	Ø (Diameter)	Part No.
10 litre	1010 mm (39.4 in)	800 mm (31.5 in)	140 mm (5.5 in)	WEXHB010-230ZE140-0080BHT3
50 litre	1670 mm (65.7 in)	1400 mm (55.1 in)	230 mm (9.1 in)	WEXHB050-230ZE230-0140BHT3
79 litre	1290 mm (50.8 in)	1000 mm (39.4 in)	318 mm (12.5 in)	WEXHB079-230ZE318-0100BHT3



ATEX Controller:

Nominal Voltage	Sensor Input	Temperature Range	Amps	Part No.
230 VAC	PT100 RTD	0°C to 450°C (32°F to 842°F)	25	WEXRBL25-230ZESBH



BriskHeat®

www.BriskHeat.com
1-888-412-7406 (Worldwide)
Email: bhtsales1@briskheat.com

PN: 11745-41 Rev A