

8201 CONDITION MONITORING ACCELEROMETER

SPECIFICATIONS

- Piezoelectric Accelerometer
- $\pm 25g$ to $\pm 500g$ Dynamic Ranges
- Wide Bandwidth to $>10,000\text{Hz}$
- Superior Resolution to MEMS Devices
- Low Cost, Superior Value
- Ready to use, Plug & Play design

FEATURES

- Amplified $\pm 1.25\text{V}$ Signal Output
- 3.0 to 5.5Vdc Excitation Voltage
- Anodized Aluminum Housing
- Piezo-Ceramic Crystal, Shear Mode
- -40° to $+125^\circ\text{C}$ Operating Range

APPLICATIONS

- Machine Health Monitoring
- Predictive Maintenance Installations
- Condition Monitoring, IoT
- Impact & Shock Monitoring
- Bearing Installations

The Model 8201 is a low cost, packaged accelerometer designed for machine condition monitoring and preventive maintenance applications. The piezo-electric accelerometer is available in ranges from $\pm 25g$ to $\pm 500g$ and features a flat frequency response up to $>10\text{kHz}$. The model 8201 accelerometer feature a stable piezo-ceramic crystal in shear mode with low power electronics, sealed in a fully hermetic LCC package.

The PE technology incorporated in the 8201 accelerometer has a proven track record for offering the reliable and long-term stable output required for condition monitoring applications. The accelerometer is designed and qualified for machine health monitoring and has superior Resolution, Dynamic Range and Bandwidth to MEMS devices.

The accelerometer offers end users a simple package to test the performance of the embedded model 820M1 accelerometer, which is installed in this 8201 accelerometer, without having to design a PCB circuit for installing the 820M1.

PERFORMANCE SPECIFICATIONS

All values are typical at +24°C, 80Hz and 3.3Vdc excitation unless otherwise stated. TE Connectivity reserves the right to update and change these specifications without notice.

Parameters

DYNAMIC

	±25	±50	±100	±200	±500	Notes
Range (g)	±25	±50	±100	±200	±500	
Sensitivity (mV/g)	50.0	25.0	12.5	6.3	2.5	±20%
Frequency Response (Hz)	6-6000	6-6000	6-6000	6-6000	6-6000	±1dB
Frequency Response (Hz)	2-10000	2-10000	2-10000	2-10000	2-10000	±3dB (see note 1 below)
Resonant Frequency (Hz)	>30000	>30000	>30000	>30000	>30000	
Non-Linearity (%FSO)	±1	±1	±1	±1	±1	Maximum
Transverse Sensitivity (%)	<8	<8	<8	<8	<8	Maximum
Shock Limit (g)	10,000	10,000	10,000	10,000	10,000	
Residual Noise (mg RMS)	6.3	12.4	15.9	24.7	39.9	2Hz to 10kHz
Spectral Noise, 10Hz (µg√Hz)	98	193	248	384	620	
Spectral Noise, 100Hz (µg√Hz)	51	101	130	201	324	
Spectral Noise, 1kHz (µg√Hz)	45	89	114	176	285	

ELECTRICAL

Excitation Voltage (Vdc)	3.0 to 5.5 (see note 2 below)
Bias Voltage (Vdc)	Excitation Voltage / 2
Full Scale Output Voltage (V)	±1.25
Total Supply Current (µA)	62
Output Impedance (Ω)	<100
Warm-up Time (sec)	<1

ENVIRONMENTAL

Temperature Response (%)	See Typical Temperature Response Curves on Page 3
Operating Temperature (°C)	-40 to +125
Storage Temperature (°C)	-40 to +125
Humidity	Hermetically Sealed Sensor, Epoxy Sealed Housing

PHYSICAL

Sensing Element	PZT (Lead Zirconate Titanate), Shear Mode
Case Material	Anodized Aluminum Housing
Weight (grams)	2.2
Mounting	Epoxy Mount

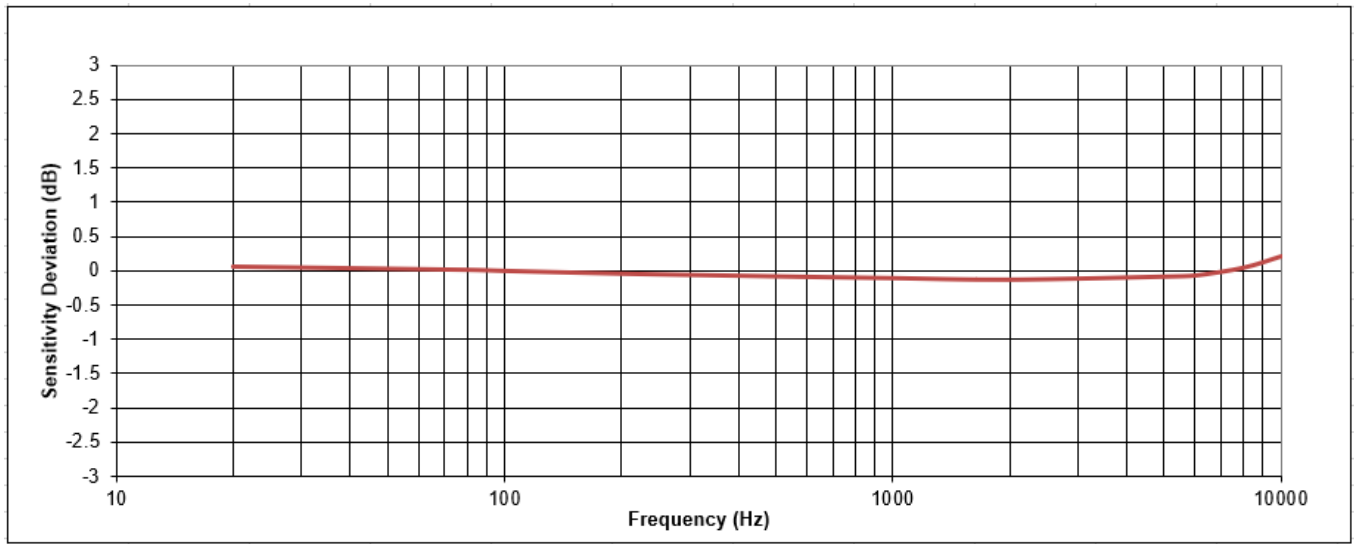
Calibration supplied: CS-SENS-0100 NIST Traceable Amplitude Calibration at 80Hz

¹ Proper mounting is critical for good performance to 10kHz. See operating manual for recommended installation instructions.

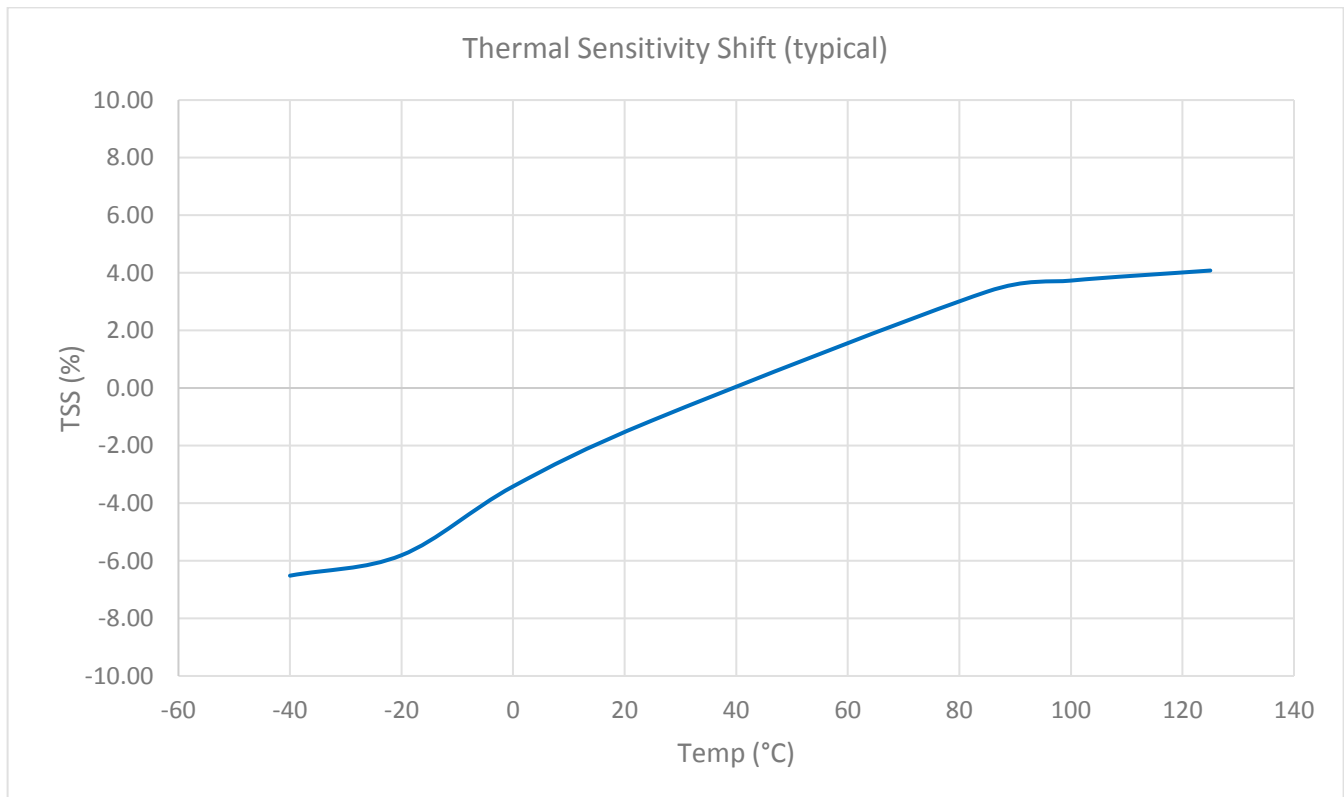
² The model 8201 can be operated with 2.8V excitation but the full-scale range will be limited. See operating manual for details.

The information in this sheet has been carefully reviewed and is believed to be accurate; however, no responsibility is assumed for inaccuracies. Furthermore, this information does not convey to the purchaser of such devices any license under the patent rights to the manufacturer. TE Connectivity reserves the right to make changes without further notice to any product herein. TE Connectivity makes no warranty, representation or guarantee regarding the suitability of its product for any particular purpose, nor does TE Connectivity assume any liability arising out of the application or use of any product or circuit and specifically disclaims any and all liability, including without limitation consequential or incidental damages. Typical parameters can and do vary in different applications. All operating parameters must be validated for each customer application by customer's technical experts. TE Connectivity does not convey any license under its patent rights nor the rights of others.

FREQUENCY RESPONSE CURVE

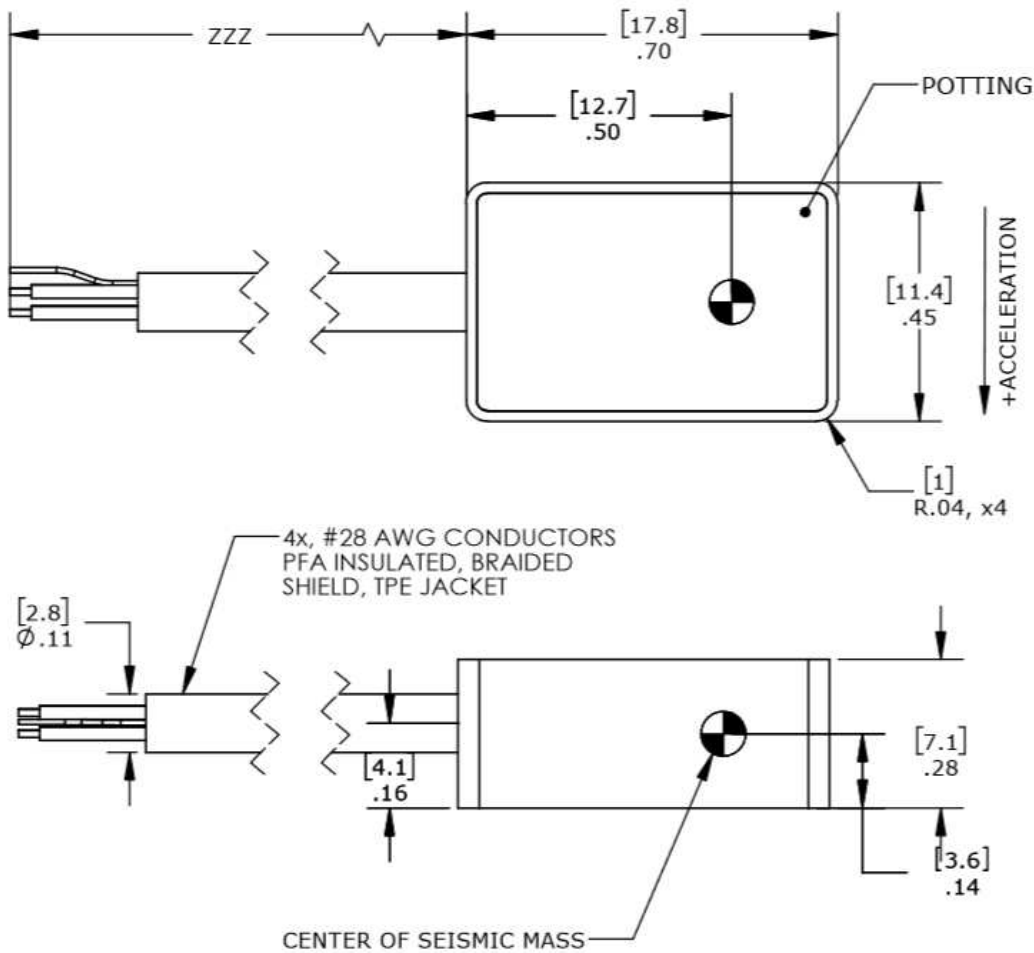


SENSITIVITY TEMPERATURE SHIFT

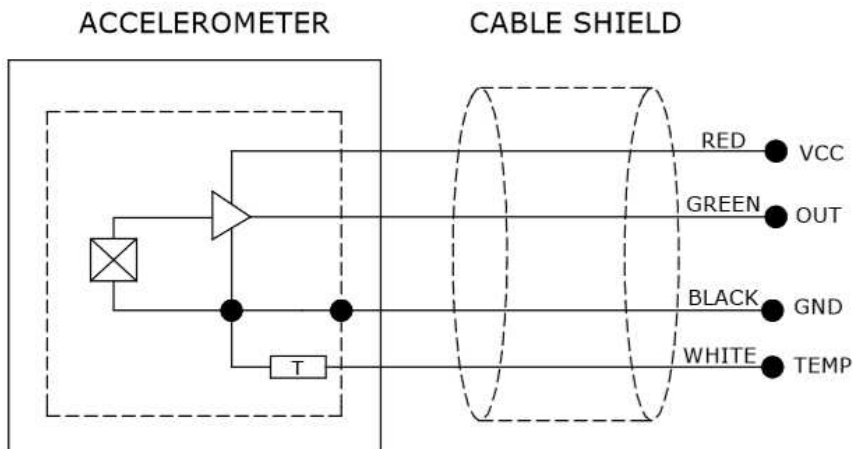


MODEL 8201 ACCELEROMETER

DIMENSIONS



SCHEMATIC



MODEL 8201 ACCELEROMETER

ORDERING INFORMATION

8201	GGGG	ZZZ
Range		
0025 = 25g		
0050 = 50g		
0100 = 100g		
0200 = 200g		
0500 = 500g		
Cable length		
120 = 120 inches, 10ft (standard)		
240 = 240 inches, 20ft		
360 = 360 inches, 30ft		

Example: 8201-0050-120
Model 8201, 50g, 120inches (10ft) Cable

NORTH AMERICA

Tel +1 800 522 6752
Customercare.hmpt@te.com

EUROPE

Tel +31 73 624 6999
Customercare.lcsb@te.com

ASIA

Tel +86 0400 820 6015
customercareshzn@te.com

te.com/sensorsolutions

TE Connectivity, TE Connectivity (logo) and EVERY CONNECTION COUNTS are trademarks. All other logos, products and/or company names referred to herein might be trademarks of their respective owners.

The information given herein, including drawings, illustrations and schematics which are intended for illustration purposes only, is believed to be reliable. However, TE Connectivity makes no warranties as to its accuracy or completeness and disclaims any liability in connection with its use. TE Connectivity's obligations shall only be as set forth in TE Connectivity's Standard Terms and Conditions of Sale for this product and in no case will TE Connectivity be liable for any incidental, indirect or consequential damages arising out of the sale, resale, use or misuse of the product. Users of TE Connectivity products should make their own evaluation to determine the suitability of each such product for the specific application.

© 2018 TE Connectivity Ltd. family of companies All Rights Reserved.