


DRAWING NO.
SC200297

WIRE RANGE	CATALOG NUMBER	FIG. NO.	DIMENSIONS IN INCHES			INSTALLATION TOOLING	WIRE STRIP LENGTH
			L MAX.	O.D. MAX.	MAX. DIA. 		
22-18	YSV18-H	2	.91 [23]	.13 [3]	.12 [3]	MR8-G98	1/4
	YSV18	1	.66 [17]				
20-14	YSV14-H	4	1.00 [25]	.17 [4]	.15 [4]	Y10D	
	YSV14	3	.66 [17]			---	
12-10	YSV10-H	4	1.12 [28]	.22 [6]	.19 [5]	Y8MRB	
	YSV10	3	.79 [20]			---	

REV.	DATE	DESCRIPTION	BY	C'K'D.
1	2/10/97	REDRAWN TO CAD, ADDED NOTES 4 & 5, ADDED MKTG. AND Q.A. APPROVAL SIGNATURES. (PER PCN 3008)	PL	JLM

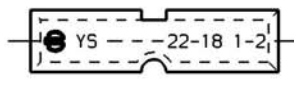
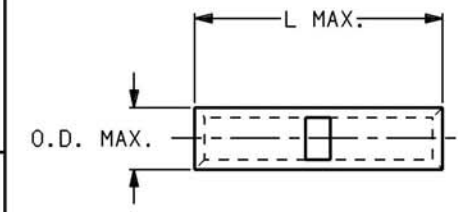


FIG. 1

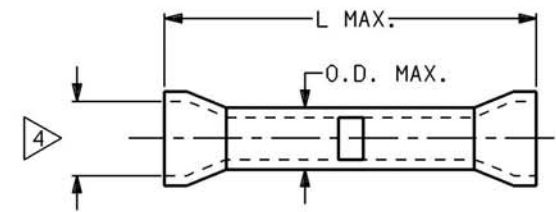


FIG. 2

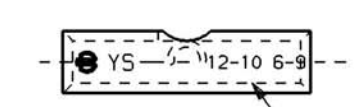
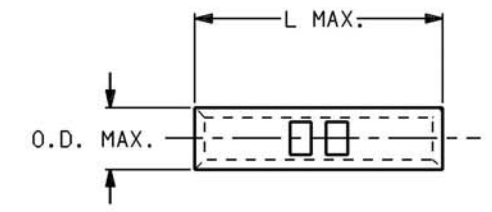


FIG. 3

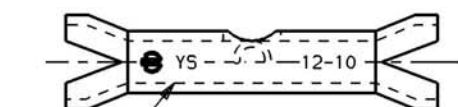
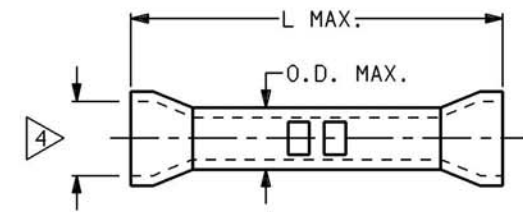
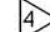


FIG. 4

TYPICAL LETTERING

NOTES:

1. MATERIAL: COPPER TUBING.
2. FINISH: TIN PLATED.
3. CONNECTORS ARE UL AND CSA APPROVED.
4.  SHROUD I.D. ACCEPTS MAX. INSULATION DIAMETER SHOWN IN TABLE.
5. DIMENSIONS IN [] ARE IN MILLIMETERS ROUNDED OFF TO THE NEAREST MILLIMETER, UNLESS OTHERWISE NOTED, AND ARE FOR REFERENCE ONLY.

REFERENCE: SD10058

UNINSULATED HYLINK™			
CAT NO. YSV-- , YSV--H (TABLE)	SCALE		N/A
DRAWN: H.C. 12/6/86	CHECKED: J.M.	12/9/86	
DSGN APPVL: A.C. 12/10/86	MFG APPVL: N/A		
Q.A. APPVL: D. VAR10 9/13/96	MKTG APPVL: G. SCHWEBLER	9/10/96	
CAD FILE: SC200297-SHT01	PH REF: N/A		
MOL REF: N/A			
PROJECT: D050886			
DRAWING NO.		REV	
SC200297		1	
SHEET 1 OF 1			



REV. 061995