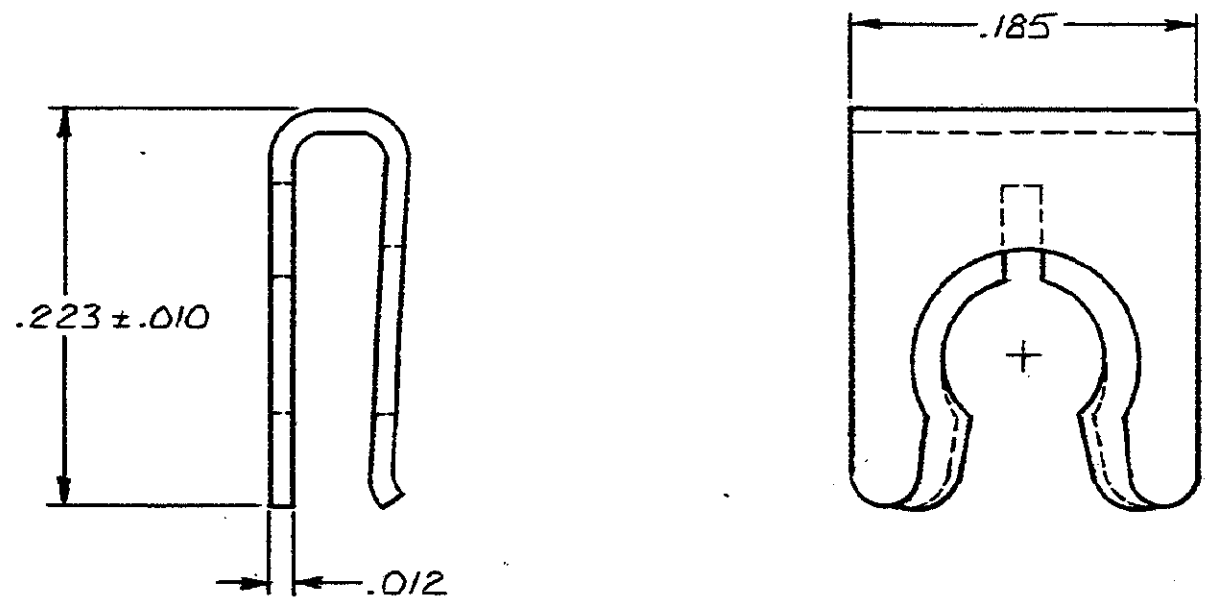


DRAWING MADE IN THIRD ANGLE PROJECTION

1 LOC *BD* DIST *39*

THIS DRAWING IS UNPUBLISHED. RELEASED FOR PUBLICATION, 19
 © COPYRIGHT 19 BY AMP INCORPORATED, HARRISBURG, PA. ALL INTERNATIONAL RIGHTS RESERVED. AMP PRODUCTS MAY BE COVERED BY U.S. AND FOREIGN PATENTS AND/OR PATENTS PENDING.

REVISIONS						
P	F	ZONE	LTR	DESCRIPTION	DATE	APPROVED
	✓		A	REVISED PER ECO-13-012711	8/21/13	CWR



⚠ STAINLESS STEEL PER ASTM A666.

# 4-40	207386-1
THREAD	PART NO

UNLESS OTHERWISE SPECIFIED DIMENSIONS ARE IN INCHES. TOLERANCES ON: DECIMALS ± .005 ANGLES ±	CONTRACT NO	AMP AMP INCORPORATED Harrisburg, Pa.	
	DR <i>M. Epler</i> 1-7-88	NAME CLIP SCREW RETAINER AMPLIMITE®	
MATERIAL ⚠	CHK <i>W.G. Leitch</i> 1-8-88	SIZE B	FSCM NO 00779
FINISH	APPD <i>R. Zylke</i> 2-11-88	DRAWING NO 207386	SCALE 10:1
	APPD <i>W. Leitch</i> 1-11-88	SHEET 1 OF 1	
	DSGN APPD		
	OTHER APPD		