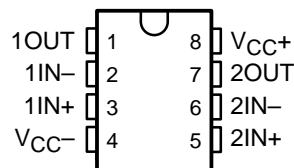


RC4558 DUAL GENERAL-PURPOSE OPERATIONAL AMPLIFIER

SLOS073B – MARCH 1976 – REVISED OCTOBER 2002

- **Continuous-Short-Circuit Protection**
- **Wide Common-Mode and Differential Voltage Ranges**
- **No Frequency Compensation Required**
- **Low Power Consumption**
- **No Latch-Up**
- **Unity-Gain Bandwidth . . . 3 MHz Typ**
- **Gain and Phase Match Between Amplifiers**
- **Low Noise . . . 8 nV/√Hz Typ at 1 kHz**
- **Designed To Be Interchangeable With Raytheon RC4558 Device**

**D, P, PS, OR PW PACKAGE
(TOP VIEW)**



description/ordering information

The RC4558 device is a dual general-purpose operational amplifier, with each half electrically similar to the μ A741, except that offset null capability is not provided.

The high common-mode input voltage range and the absence of latch-up make this amplifier ideal for voltage-follower applications. The device is short-circuit protected and the internal frequency compensation ensures stability without external components.

ORDERING INFORMATION

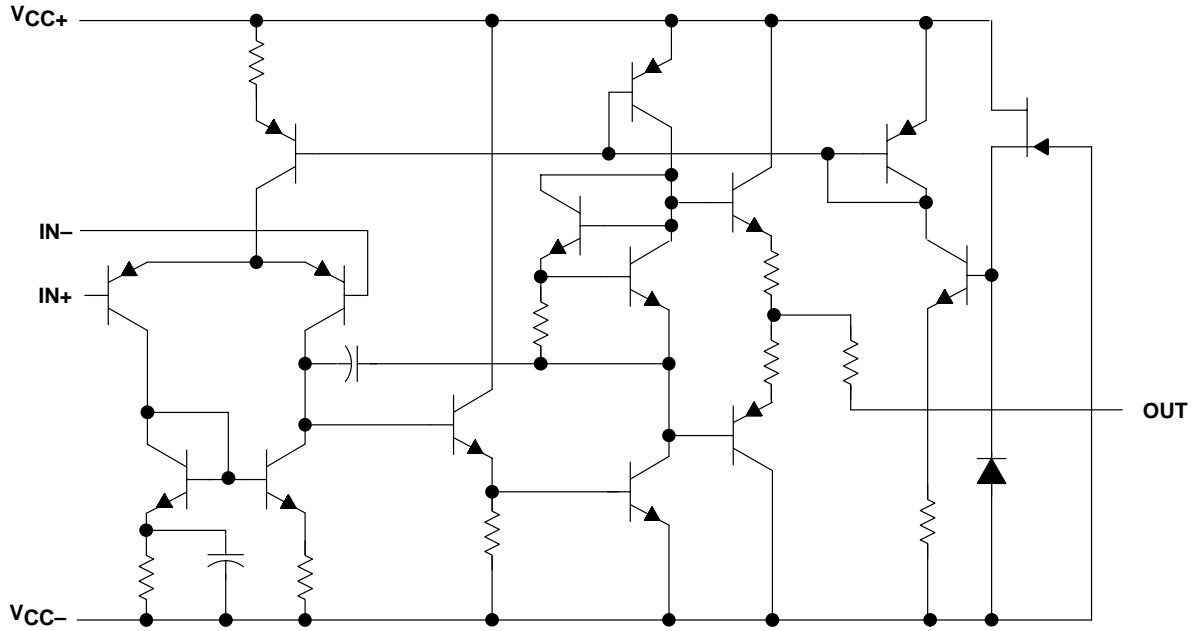
T _A	V _{IO} MAX AT 25°C	PACKAGE†		ORDERABLE PART NUMBER	TOP-SIDE MARKING
0°C to 70°C	6 mV	PDIP (P)	Tube	RC4558P	RC4558P
		SOIC (D)	Tube	RC4558D	RC4558
			Tape and reel	RC4558DR	
		SOP (PS)	Tape and reel	RC4558PSR	R4558
		TSSOP (PW)	Tube	RC4558PW	R4558
			Tape and reel	RC4558PWR	

† Package drawings, standard packing quantities, thermal data, symbolization, and PCB design guidelines are available at www.ti.com/sc/package.

RC4558 DUAL GENERAL-PURPOSE OPERATIONAL AMPLIFIER

SLOS073B – MARCH 1976 – REVISED OCTOBER 2002

schematic (each amplifier)



absolute maximum ratings over operating free-air temperature range (unless otherwise noted)†

Supply voltage, V_{CC+} (see Note 1)	18 V
Supply voltage, V_{CC-} (see Note 1)	-18 V
Differential input voltage, V_{ID} (see Note 2)	± 30 V
Input voltage, V_I (any input, see Notes 1 and 3)	± 15 V
Duration of output short circuit to ground, one amplifier at a time (see Note 4)	Unlimited
Operating virtual junction temperature, T_J	150°C
Package thermal impedance, θ_{JA} (see Notes 5 and 6):	
D package	97°C/W
P package	85°C/W
PS package	95°C/W
PW package	149°C/W
Lead temperature 1,6 mm (1/16 inch) from case for 60 seconds	260°C
Storage temperature range, T_{stg}	-65°C to 150°C

- NOTES: 1. All voltage values, unless otherwise noted, are with respect to the midpoint between V_{CC+} and V_{CC-} .
2. Differential voltages are at $IN+$ with respect to $IN-$.
3. The magnitude of the input voltage must never exceed the magnitude of the supply voltage or 15 V, whichever is less.
4. Temperature and/or supply voltages must be limited to ensure that the dissipation rating is not exceeded.
5. Maximum power dissipation is a function of $T_J(max)$, θ_{JA} , and T_A . The maximum allowable power dissipation at any allowable ambient temperature is $P_D = (T_J(max) - T_A)/\theta_{JA}$. Operating at the absolute maximum T_J of 150°C can affect reliability.
6. The package thermal impedance is calculated in accordance with JESD 51-7.

recommended operating conditions

		MIN	MAX	UNIT
V_{CC+}	Supply voltage	5	15	V
V_{CC-}		-5	-15	
T_A	Operating free-air temperature	0	70	°C



POST OFFICE BOX 655303 • DALLAS, TEXAS 75265

RC4558 DUAL GENERAL-PURPOSE OPERATIONAL AMPLIFIER

SLOS073B – MARCH 1976 – REVISED OCTOBER 2002

electrical characteristics at specified free-air temperature, $V_{CC+} = 15\text{ V}$, $V_{CC-} = -15\text{ V}$

PARAMETER		TEST CONDITIONS†	MIN	TYP	MAX	UNIT
V_{IO}	Input offset voltage	$V_O = 0$	25°C	0.5	6	mV
			Full range		7.5	
I_{IO}	Input offset current	$V_O = 0$	25°C	5	200	nA
			Full range		300	
I_{IB}	Input bias current	$V_O = 0$	25°C	150	500	nA
			Full range		800	
V_{ICR}	Common-mode input voltage range	25°C	±12	±14		V
V_{OM}	Maximum output voltage swing	$R_L = 10\text{ k}\Omega$	25°C	±12	±14	V
		$R_L = 2\text{ k}\Omega$	25°C	±10	±13	
		$R_L \geq 2\text{ k}\Omega$	Full range	±10		
A_{VD}	Large-signal differential voltage amplification	$R_L \geq 2\text{ k}\Omega$, $V_O = \pm 10\text{ V}$	25°C	20	300	V/mV
			Full range	15		
B_1	Unity-gain bandwidth	25°C		3		MHz
r_i	Input resistance	25°C	0.3	5		M Ω
CMRR	Common-mode rejection ratio	25°C	70	90		dB
k_{SVS}	Supply-voltage sensitivity ($\Delta V_{IO}/\Delta V_{CC}$)	$V_{CC} = \pm 15\text{ V}$ to $\pm 9\text{ V}$	25°C	30	150	$\mu\text{V/V}$
V_n	Equivalent input noise voltage (closed loop)	$A_{VD} = 100$, $R_S = 100\ \Omega$, $f = 1\text{ kHz}$, $BW = 1\text{ Hz}$	25°C	8		$\text{nV}/\sqrt{\text{Hz}}$
I_{CC}	Supply current (both amplifiers)	$V_O = 0$, No load	25°C	2.5	5.6	mA
			$T_A(\text{min})$	3	6.6	
			$T_A(\text{max})$	2.3	5	
P_D	Total power dissipation (both amplifiers)	$V_O = 0$, No load	25°C	75	170	mW
			$T_A(\text{min})$	90	200	
			$T_A(\text{max})$	70	150	
V_{O1}/V_{O2}	Crosstalk attenuation	Open loop $A_{VD} = 100$	$R_S = 1\text{ k}\Omega$, $f = 10\text{ kHz}$	25°C	85	dB
					105	

† All characteristics are measured under open-loop conditions with zero common-mode input voltage, unless otherwise specified. Full range is 0°C to 70°C. $T_A(\text{min})$ is 0°C. $T_A(\text{max})$ is 70°C.

operating characteristics, $V_{CC+} = 15\text{ V}$, $V_{CC-} = -15\text{ V}$, $T_A = 25^\circ\text{C}$

PARAMETER	TEST CONDITIONS			MIN	TYP	MAX	UNIT
t_r	Rise time	$V_I = 20\text{ mV}$, $R_L = 2\text{ k}\Omega$, $C_L = 100\text{ pF}$			0.13		ns
	Overshoot				5		%
SR	Slew rate at unity gain	$V_I = 10\text{ V}$,	$R_L = 2\text{ k}\Omega$,	$C_L = 100\text{ pF}$	1.1	1.7	V/ μs



IMPORTANT NOTICE

Texas Instruments Incorporated and its subsidiaries (TI) reserve the right to make corrections, modifications, enhancements, improvements, and other changes to its products and services at any time and to discontinue any product or service without notice. Customers should obtain the latest relevant information before placing orders and should verify that such information is current and complete. All products are sold subject to TI's terms and conditions of sale supplied at the time of order acknowledgment.

TI warrants performance of its hardware products to the specifications applicable at the time of sale in accordance with TI's standard warranty. Testing and other quality control techniques are used to the extent TI deems necessary to support this warranty. Except where mandated by government requirements, testing of all parameters of each product is not necessarily performed.

TI assumes no liability for applications assistance or customer product design. Customers are responsible for their products and applications using TI components. To minimize the risks associated with customer products and applications, customers should provide adequate design and operating safeguards.

TI does not warrant or represent that any license, either express or implied, is granted under any TI patent right, copyright, mask work right, or other TI intellectual property right relating to any combination, machine, or process in which TI products or services are used. Information published by TI regarding third-party products or services does not constitute a license from TI to use such products or services or a warranty or endorsement thereof. Use of such information may require a license from a third party under the patents or other intellectual property of the third party, or a license from TI under the patents or other intellectual property of TI.

Reproduction of information in TI data books or data sheets is permissible only if reproduction is without alteration and is accompanied by all associated warranties, conditions, limitations, and notices. Reproduction of this information with alteration is an unfair and deceptive business practice. TI is not responsible or liable for such altered documentation.

Resale of TI products or services with statements different from or beyond the parameters stated by TI for that product or service voids all express and any implied warranties for the associated TI product or service and is an unfair and deceptive business practice. TI is not responsible or liable for any such statements.

Mailing Address:

Texas Instruments
Post Office Box 655303
Dallas, Texas 75265

PRODUCT FOLDER | PRODUCT INFO: [FEATURES](#) | [DESCRIPTION](#) | [DATASHEETS](#) | [PRICING/AVAILABILITY/PKG](#) | [SAMPLES](#)
 | [APPLICATION NOTES](#) | [USER GUIDES](#) | [MORE LITERATURE](#) | [MODELS](#)

PRODUCT SUPPORT: [DEVELOPMENT TOOLS](#) | [RELATED SOFTWARE](#) | [APPLICATIONS](#)

RC4558, Dual General-Purpose Operational Amplifier

DEVICE STATUS: ACTIVE

PARAMETER NAME	RC4558
Number of Channels	2
Available Channels	D
Shutdown	No
Vs (max) (V)	30
Vs (min) (V)	10
IQ per channel (max) (mA)	2.8
GBW (typ) (MHz)	3
Slew Rate (typ) (V/us)	1.7
VIO (25 deg C) (max) (mV)	6
IIB (max) (pA)	500000
CMRR (min) (dB)	70
Vn at 1kHz (typ) (nV/rtHz)	8
Single Supply	No

FEATURES

[▲Back to Top](#)

- Continuous-Short-Circuit Protection
- Wide Common-Mode and Differential Voltage Ranges
- No Frequency Compensation Required
- Low Power Consumption
- No Latch-Up
- Unity-Gain Bandwidth ...3 MHz Typ
- Gain and Phase Match Between Amplifiers
- Low Noise ...8 nV/√Hz Typ at 1 kHz
- Designed To Be Interchangeable With Raytheon RC4558 Device

DESCRIPTION

[▲Back to Top](#)

The RC4558 device is a dual general-purpose operational amplifier, with each half electrically similar to the uA741, except that offset null capability is not provided.

The high common-mode input voltage range and the absence of latch-up make this amplifier ideal for voltage-follower applications. The device is short-circuit protected and the internal frequency compensation ensures stability without external components.

TECHNICAL DOCUMENTS

[▲Back to Top](#)

To view the following documents, [Acrobat Reader 4.0](#) is required.

To download a document to your hard drive, right-click on the link and choose 'Save'.

DATASHEET

[▲Back to Top](#)

Full datasheet in Acrobat PDF: [rc4558.pdf](#) (60 KB, Rev.B) (Updated: 10/17/2002)

APPLICATION NOTES

[▲Back to Top](#)

View Application Notes for [Operational Amplifiers \(Less than equal to 100MHz\)](#)

- [Analog Applications Journal \(Rev. A\)](#) (SLYT010A - Updated: 03/17/2000)
- [Op Amps for Everyone Design Guide \(Rev. B\)](#) (SLOD006B - Updated: 08/22/2002)

MORE LITERATURE

[▲Back to Top](#)

- [Enhanced Plastic Portfolio Brochure](#) (SGZB004, 387 KB - Updated: 08/19/2002)
- [QML Class V Space Products Military Brief \(Rev. A\)](#) (SGZN001A, 257 KB - Updated: 10/07/2002)
- [Understanding Basic Analog - Active Devices \(Rev. A\)](#) (SLOA026A, 61 KB - Updated: 04/06/2000)
- [Understanding Basic Analog - Circuit Equations \(Rev. A\)](#) (SLOA025A, 89 KB - Updated: 04/06/2000)
- [Understanding Basic Analog Passive Devices](#) (SLOA027, 56 KB - Updated: 06/25/1999)

USER GUIDES

[▲Back to Top](#)

- [Universal Op Amp Single, Dual, Quad \(SOIC\) Evaluation Module With Shutdown \(Rev. A\)](#) (SLOU061A, 457 KB - Updated: 03/20/2001)
- [Universal Operational Amplifier EVM \(Rev. A\)](#) (SLVU006A, 387 KB - Updated: 03/22/1999)
- [Universal Operational Amplifier Evaluation Module Selection Guide \(Rev. B\)](#) (SLOU060B, 20 KB - Updated: 03/20/2001)
- [Universal Operational Amplifier Single, Dual, Quad \(MSOP/TSSOP\)](#) (SLOU055, 1196 KB - Updated: 10/22/1999)
- [Universal Operational Amplifier Single, Dual, Quad \(PDIP\) \(Rev. A\)](#) (SLOU062A, 513 KB - Updated: 03/20/2001)

SAMPLES

[▲Back to Top](#)

ORDERABLE DEVICE	PACKAGE INDUSTRY (TI)	PINS	TEMP (°C)	STATUS	PRODUCT CONTENT	SAMPLES
RC4558D	SOIC (D)	8	0 TO 70	ACTIVE	View Product Content	Request Samples
RC4558P	PDIP (P)	8	0 TO 70	ACTIVE	View Product Content	Request Samples
RC4558PSR	SOP (PS)	8	0 TO 70	ACTIVE	View Product Content	Request Samples
RC4558PWR	TSSOP (PW)	8		ACTIVE	View Product Content	Request Samples

PRICING/ AVAILABILITY/ PKG

[▲Back to Top](#)

DEVICE INFORMATION Updated Daily							TI INVENTORY STATUS As Of 09:00 AM GMT, 17 Apr 2003			REPORTED DISTRIBUTOR INVENTORY As Of 09:00 AM GMT, 17 Apr 2003		
ORDERABLE DEVICE	STATUS	PACKAGE TYPE PINS	TEMP (°C)	PRODUCT CONTENT	BUDGETARY PRICING QTY \$US	STD PACK QTY	IN STOCK	IN PROGRESS QTY DATE	LEAD TIME	DISTRIBUTOR COMPANY REGION	IN STOCK	PURCHASE
RC4558D	ACTIVE	SOIC (D) 8	0 TO 70	View Contents	1KU 0.26	75	2145*	2055 21 Apr	4 WKS	Arrow Americas	> 1k	BUY NOW
								4099 25 Apr		EBV Electronik Europe	> 1k	BUY NOW
								1625 30 Apr		Avnet-SILICA Europe	> 1k	BUY NOW
								> 10k 06 May		Avnet Americas	> 1k	BUY NOW
										Abacus Polar Europe	440	BUY NOW
										DigiKey Americas	69	BUY NOW
										Insight Americas	63	BUY NOW

Product Folder: RC4558, Dual General-Purpose Operational Amplifier

RC4558DR	ACTIVE	SOIC (D) 8	0 TO 70	View Contents	1KU 0.26	2500	<u>≥ 10k*</u>	> 10k 28 Apr	2 WKS	Avnet Americas	> 1k	BUY NOW
										Arrow Americas	> 1k	BUY NOW
										DigiKey Americas	> 1k	BUY NOW
RC4558P	ACTIVE	PDIP (P) 8	0 TO 70	View Contents	1KU 0.26	50	<u>3000*</u>	> 10k 28 Apr	2 WKS	Avnet Americas	> 1k	BUY NOW
										EBV Electronik Europe	> 1k	BUY NOW
										Arrow Americas	> 1k	BUY NOW
										DigiKey Americas	> 1k	BUY NOW
										Newark Electronics Americas	> 1k	BUY NOW
										Abacus Polar Europe	1k	BUY NOW
										Insight Americas	88	BUY NOW
RC4558PSLE	OBSOLETE	SOP (PS) 8	0 TO 70	View Contents	1KU		<u>0*</u>		Call**	None Reported View Distributors		
RC4558PSR	ACTIVE	SOP (PS) 8	0 TO 70	View Contents	1KU 0.26	2000	<u>0*</u>	468 21 Apr	4 WKS	DigiKey Americas	958	BUY NOW
								> 10k 22 Apr				
RC4558PW	ACTIVE	TSSOP (PW) 8		View Contents	1KU 0.21	150	<u>0*</u>	1050 16 Apr	4 WKS	None Reported View Distributors		
								84 21 Apr				
								> 10k 08 May				
RC4558PWLE	OBSOLETE	TSSOP (PW) 8	0 TO 70	View Contents	1KU		<u>0*</u>		Call**	None Reported View Distributors		
RC4558PWR	ACTIVE	TSSOP (PW) 8		View Contents	1KU 0.26	2000	<u>0*</u>	> 10k 08 May	4 WKS	Avnet Americas	> 1k	BUY NOW
										DigiKey Americas	> 1k	BUY NOW
RC4558Y	OBSOLETE	(Y) 0		View Contents	1KU		<u>0*</u>		Call**	None Reported View Distributors		

DEVELOPMENT TOOLS

[▲Back to Top](#)

Tool Part Number	Tool Title	Tool Type
OPAMPEVM-SOT23	Universal EVM for Single/Dual OpAmps without Shutdown in MSOP/SOIC/SOT-23 Packages	Development Boards/EVMs
UNIV-OPAMP-GUIDE	Universal EVM Selection Guide	Development Boards/EVMs

RELATED SOFTWARE

[▲Back to Top](#)

- [FilterPro MFB and Sallen-Key Design Program \(Rev. A\)](#) (SLVC003A, 4314 KB, ZIP - Updated: 02/27/2002)

MODELS

[▲Back to Top](#)

- [RC4558 Spice Macromodel](#) (SLOJ053, 0 KB, ZIP - Updated: 01/10/2002)

Table Data Updated on: 4/17/2003