

# Customer Information Sheet

DRAWING No.: S70-22010X045R

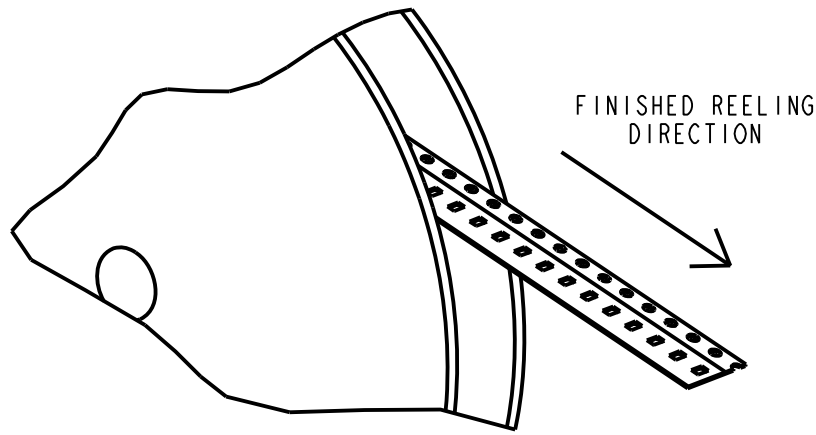
IF IN DOUBT - ASK

©

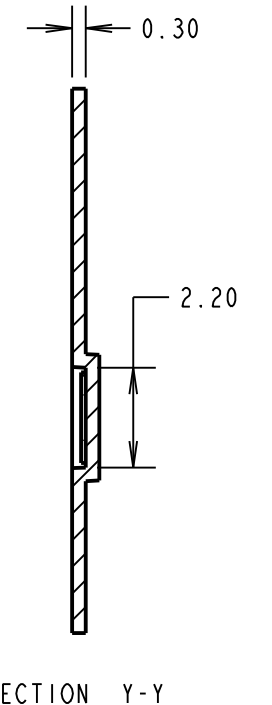
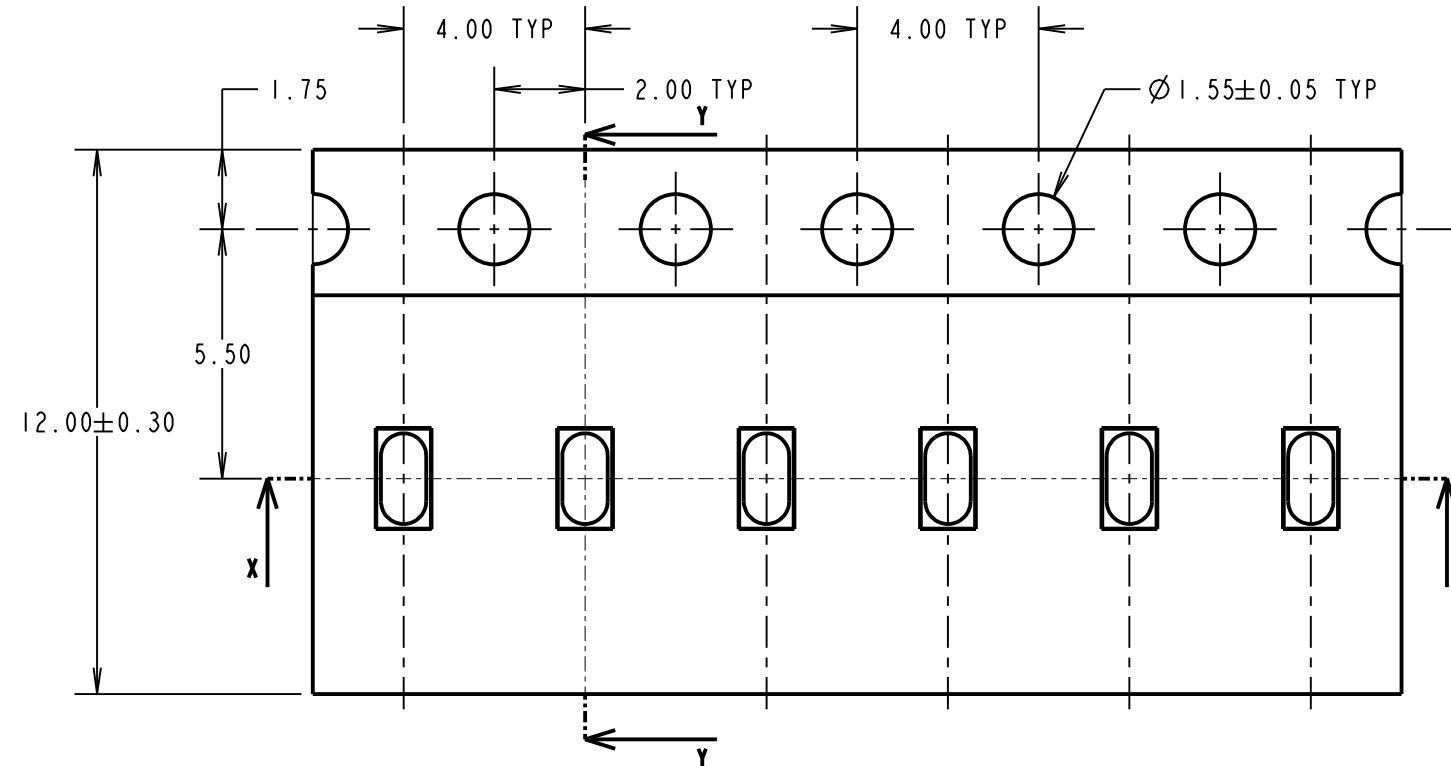
NOT TO SCALE

THIRD ANGLE PROJECTION

ALL DIMENSIONS IN mm

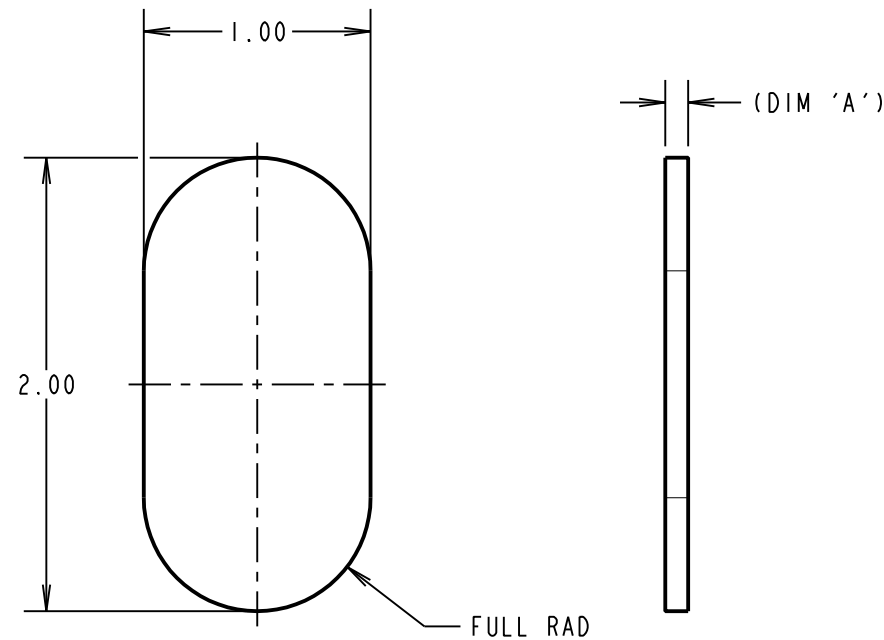


COMPONENT DETAILS

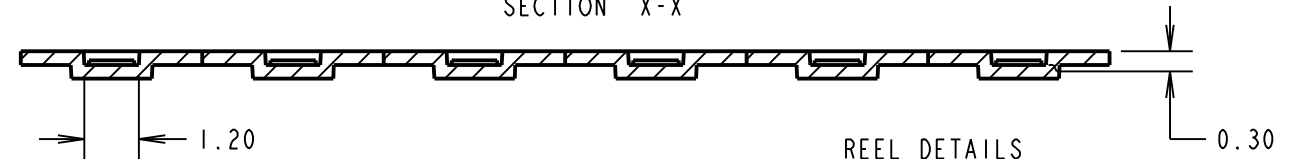


SECTION X-X

SECTION Y-Y

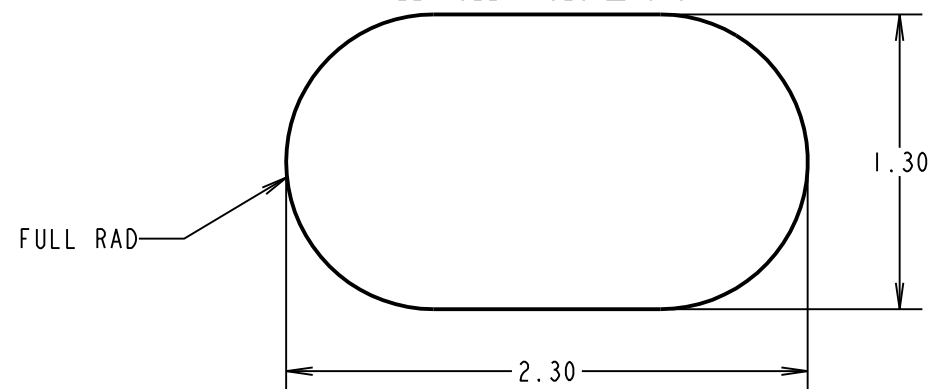


PART	DIM 'A'
S70-220101045R	0.10 ± 0.05
S70-220102045R	0.20 ± 0.05



REEL DETAILS

RECOMENDED PCB LAYOUT  
ALL TOLERANCES ±0.05



ORDER CODE:

**S70-22010XX45R**

SIZE:

LENGTH

WIDTH

DIM 'A' = THICKNESS

**SPECIFICATIONS:**

FINISH:

0.025 - 0.075µm GOLD OVER 1.50 - 3.0µm NICKEL

ELECTRICAL:

CURRENT RATING = 6.0A

CONTACT RESISTANCE = 0.15mΩ

ENVIRONMENTAL:

OPERATING TEMPERATURE = -40°C TO +180°C

**NOTES:**

1. QUANTITY OF COMPONENTS PER REEL = 9000.
2. PRODUCT IS TAPE AND REELED IN GENERAL ACCORDANCE WITH EIA-481 (ELECTRONIC INDUSTRIES ASSOCIATION).

RA	ISS.	DATE	C/NOTE
5		20.02.20	22028
APPROVED:		R.ALEXANDER	
CHECKED:		R.PORTLOCK	
DRAWN:		M.PERREN	
CUSTOMER REF.:			
ASSEMBLY DRG:			

**HARWIN**

www.harwin.com  
technical@harwin.com

THIS DRAWING AND ANY INFORMATION OR DESCRIPTIVE MATTER SET OUT HEREON ARE CONFIDENTIAL AND COPYRIGHT PROPERTY OF THE HARWIN GROUP AND MUST NOT BE DISCLOSED, LOANED, COPIED OR USED FOR MANUFACTURING, TENDERING OR FOR ANY OTHER PURPOSE WITHOUT THEIR WRITTEN PERMISSION.

**TOLERANCES**

X. = ±1mm  
X.X = ±0.50mm  
X.XX = ±0.20mm  
X.XXX = ±0.01mm  
ANGLES = ±5°  
UNLESS STATED

**MATERIAL:**

BERYLLIUM COPPER

FINISH: SEE ABOVE

S/AREA: mm<sup>2</sup>

**TITLE:**

SMT POGO PIN CONTACT PAD

DRAWING NUMBER:

**S70-22010XX45R**

SHT  
2  
OF  
2