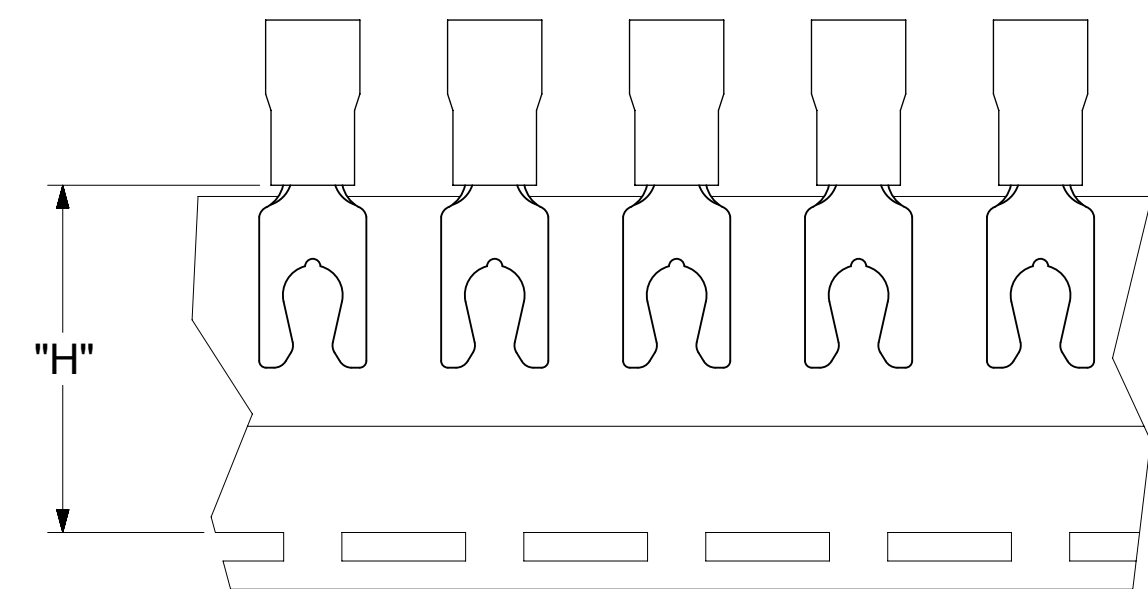
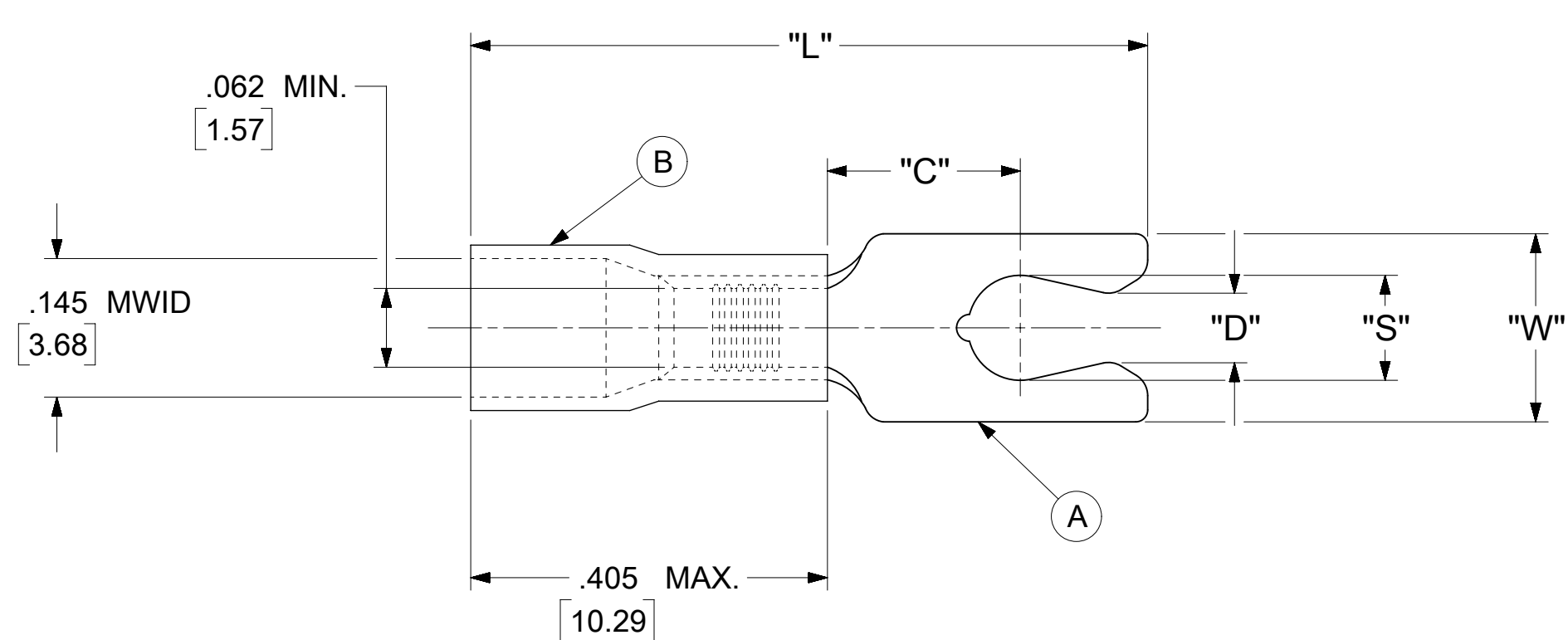


LOOSE PIECE		TAPE MOUNTED		SPECIFICATIONS						
MATERIAL NUMBER	ENGINEERING NUMBER	MATERIAL NUMBER	ENGINEERING NUMBER	STUD SIZE	"S" ±.005 [0.13]	"W" ±.010 [0.25]	"C" MIN.	"L" MAX.	"D" ±.005 [0.13]	"H"
190990013	AA-2714-08X	190990014	AA-2714-08XT	8	.173 [4.39]	.310 [7.87]	.261 [6.63]	.871 [22.12]	.139 [3.53]	.980 [24.89]
190990015	AA-2715-10X	190990016	AA-2715-10XT	10	.198 [5.03]	.330 [8.38]	.261 [6.63]	.919 [23.34]	.156 [3.96]	.980 [24.89]



PARTS ON TAPE

NOTES:

1. MATERIAL:

(A). TERMINAL: COPPER (STOCK THICKNESS  $.028 \begin{smallmatrix} +.001 \\ -.000 \end{smallmatrix}$  [0.71])

PLATING: ELECTRO-TIN (.0003 MIN.)

(B). INSULATION: MOLDED PVC (RED)

2. MWID: MAXIMUM WIRE INSULATION DIAMETER

3. WIRE SIZE: 22 -18 AWG

0.25 -1.5 MM<sup>2</sup>

4. "UL" LISTING #E32244

"CSA" LISTING #18689

5. ALL DIMENSIONS IN INCHES/[MM].

6. PARTS ARE ROHS COMPLIANT.

7. DIMS. SHOWN ARE FOR REFERENCE ONLY.

SYMBOLS	THIS DRAWING CONTAINS INFORMATION THAT IS PROPRIETARY TO MOLEX ELECTRONIC TECHNOLOGIES, LLC AND SHOULD NOT BE USED WITHOUT WRITTEN PERMISSION	
	DIMENSION UNITS	SCALE
$\nabla = 0$	INCH/MM	NTS
$\nabla = 0$	GENERAL TOLERANCES (UNLESS SPECIFIED)	
$\nabla = 0$	MM	INCH
$\nabla = 0$	4 PLACES	± --- ± ---
$\nabla = 0$	3 PLACES	± --- ± .005
$\nabla = 0$	2 PLACES	± 0.13 ± .01
$\nabla = 0$	1 PLACE	± 0.25 ± ---
$\nabla = 0$	0 PLACES	± --- ± ---
$\nabla = 0$	ANGULAR TOL	± 0.5 °
$\nabla = 0$	DRAFT WHERE APPLICABLE MUST REMAIN WITHIN DIMENSIONS	THIRD ANGLE PROJECTION
$\nabla = 0$		DRAWING SERIES
		C-SIZE 19099
	CURRENT REV DESC: MIGRATION TO ECTR/NX	
	EC NO: 620958	
	DRWN: ABENJAMINLW	2019/07/16
	CHK'D: GROJAS01	2019/07/19
	APPR: JMACNEIL	2019/08/05
	INITIAL REVISION:	
	DRWN: GZ	1985/04/05
	APPR: JMACNEIL	2019/08/05
	DOCUMENT NUMBER	DOC TYPE   DOC PART   REVISION
	190990013	PSD   000   A
	MATERIAL NUMBER	CUSTOMER
	SEE TABLE	GENERAL MARKET
		SHEET NUMBER
		1 OF 1